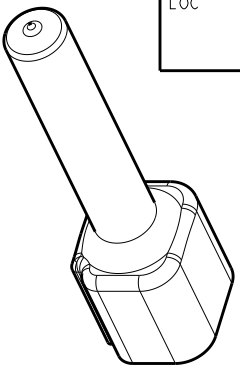
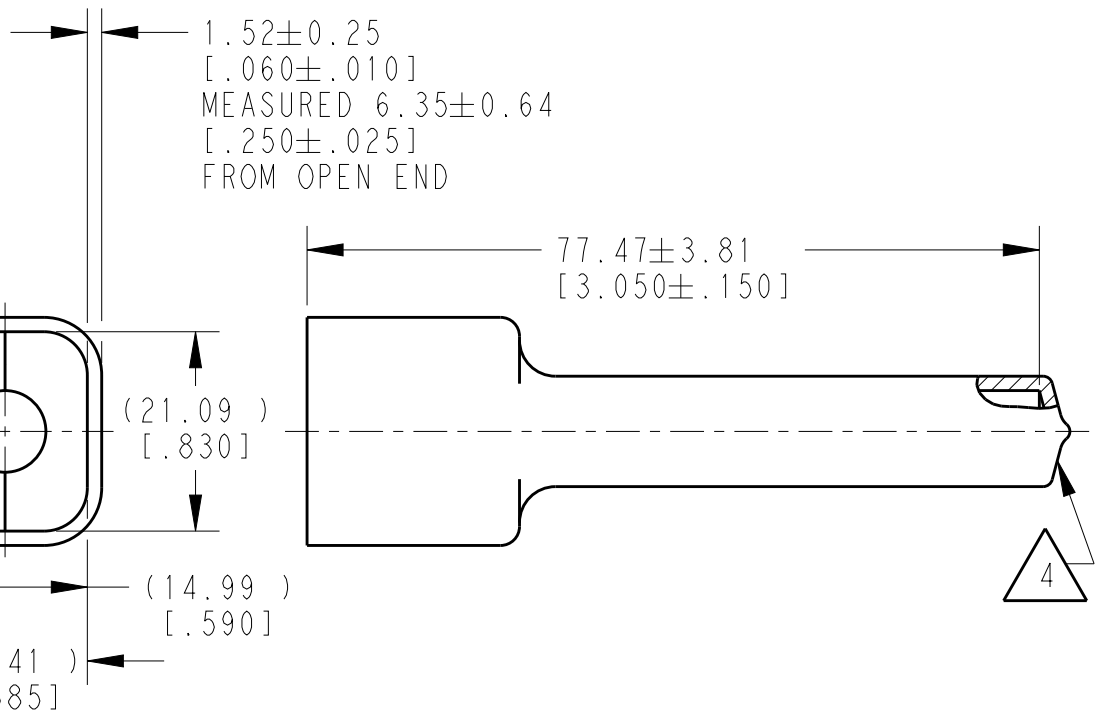


LOC		DIST		REVISIONS			
P	LTR	DESCRIPTION		DATE	DWN	APVD	
	A	NEW RELEASE PER ECO-14-010244		05AUG2014	DM	DM	
	A1	REVISED PER PCN E-19-014639		09OCT2019	JA	IG	



SCALE 3:4



- 4 SMALL MATERIAL EXTENSION IS ACCEPTABLE ON THIS END ALL AROUND.
3. THIS ACCESSORY PART IS PROVIDED WITHOUT TYPICAL TRANSPORTATION INDUSTRY PROCESS CONTROLS. NO VALIDATION TESTING HAS BEEN PERFORMED. CUSTOMER IS RESPONSIBLE FOR DETERMINING PRODUCT PERFORMANCE AND SUITABILITY FOR APPLICATION.
  2. TEMPERATURE RATING: -29°C TO +100°C [-20°F TO +212°F].
  1. THIS PART IS USED ON DTM04-08PX (X=A,B,C,D KEYS) RECEPTACLES WITH ANY MODIFICATION THAT DOES NOT INCLUDE AN END CAP.

TE INTERNAL PN	DEUTSCH PN
DTM8P-BT-BK	DTM8P-BT-BK

2019  
 RELEASED FOR PUBLICATION  
 THIS DRAWING IS UNPUBLISHED.  
 © COPYRIGHT 2014  
 TE Connectivity. All Rights Reserved.

DIMENSIONS: mm [INCHES]	DWN D.MEYER	05AUG2014	MATERIAL	PVC	FINISH	BLACK							
	CHK B.MILLIGAN	05AUG2014	TE Connectivity										
TOLERANCES UNLESS OTHERWISE SPECIFIED: 0 PLC ± 1 PLC ± 2 PLC ± 3 PLC ±0.64 [.025] 4 PLC ± ANGLES ±0°30'0"							APVD D.MEYER	05AUG2014	NAME	BOOT, RECEPTACLE, 8PIN DTM SERIES			
PRODUCT SPEC			SIZE	A 4	CAGE CODE	4AFU8	DRAWING NO	DTM8P-BT-BK	RESTRICTED TO	-			
APPLICATION SPEC			WEIGHT	6.04g		CUSTOMER DRAWING		SCALE	5:4	SHEET	1 OF 1	REV	A1