

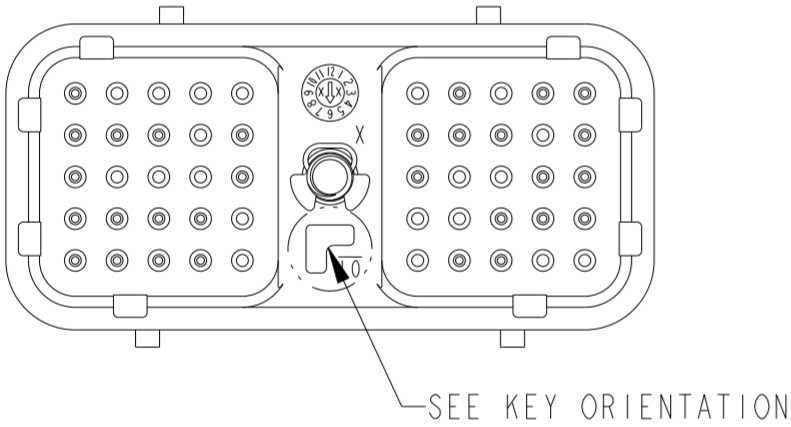
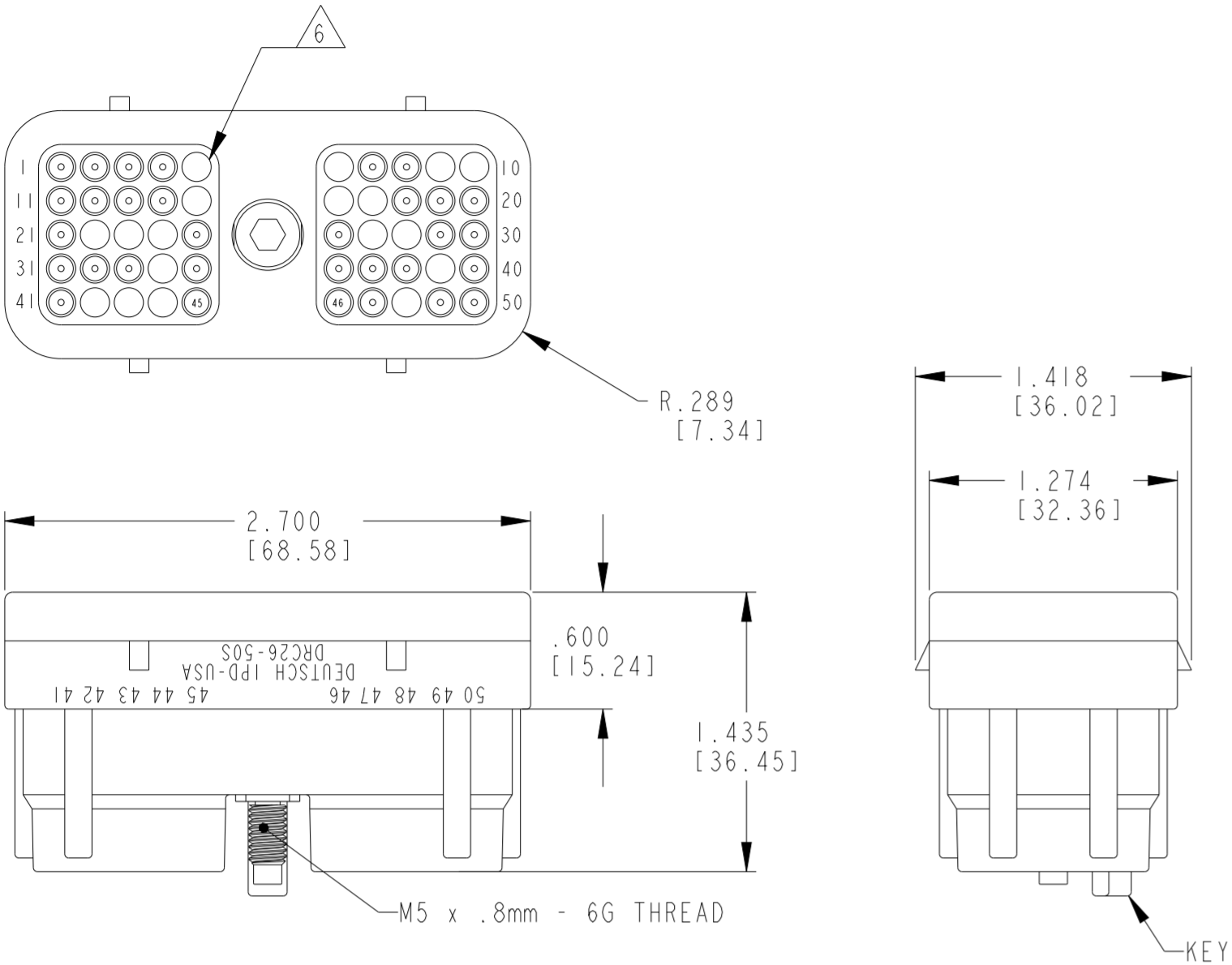
REVISIONS					
P	LTR	DESCRIPTION	DATE	DWN	APVD
	A	REVISED PER PCN-21-118564	04MAR2022	DRK	CB

D

C

B

A



- 6 CONNECTOR HAS BLOCKED CAVITIES: 5, 6, 9, 10, 15, 16, 17, 22, 23, 24, 27, 28, 34, 39, 42, 43, 44, 45, 46, 48 ARE BLOCKED
- 5 MATERIAL: HOUSING: PA46 30% GF (BLACK); BOLT: STEEL, TRIVALENT ZINC PLATED (ROHS COMPLIANT); CLIP: STEEL; GROMMET: VMO
4. THIS PLUG MATES WITH 09D41107L01 THRU 10-*** RECPTACLE.(*** = ALL MODIFICATIONS)
3. FOR CONTACT AND WIRE PERFORMANCE AND APPLICATION CHARACTERISTICS SEE ENVELOPE DRAWING 0425-015-0000.
2. RECOMMENDED RETAINING BOLT TORQUE: 25-28 IN-LB [2.82-3.16Nm]
1. PLUG IS SUPPLIED WITH DUST CAP. (NOT SHOWN)

NOTES:

DRC26-50S01-C026



01

DRC26-50S04-C026



04

DRC26-50S07-C026



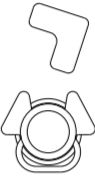
07

DRC26-50S02-C026



02

DRC26-50S05-C026



05

DRC26-50S09-C026



09

DRC26-50S03-C026



03

DRC26-50S06-C026



06

DRC26-50S10-C026



10

KEY ORIENTATION

TCPN	ALIAS PART NUMBER
DRC26-50S01-C026	DRC26-50S01-C026
DRC26-50S02-C026	DRC26-50S02-C026
DRC26-50S03-C026	DRC26-50S03-C026
DRC26-50S04-C026	DRC26-50S04-C026
DRC26-50S05-C026	DRC26-50S05-C026
DRC26-50S06-C026	DRC26-50S06-C026
DRC26-50S07-C026	DRC26-50S07-C026
DRC26-50S08-C026	DRC26-50S08-C026
DRC26-50S09-C026	DRC26-50S09-C026
DRC26-50S10-C026	DRC26-50S10-C026

CONTACT SIZE	MIN. O.D.	MAX. O.D.	WIRE GAUGE RANGE
20	.040 [1.016]	.095 [2.413]	18 - 22 [.75-.35mm ²]

THIS DRAWING IS A CONTROLLED DOCUMENT.		DWN D MEYER 22JUL1998	TE Connectivity			
DIMENSIONS: INCHES [mm]		CHK J APOSTOL 17AUG1998				
		APVD R REED 17AUG1998	NAME PLUG 50 SKT. CONT. #20 DRC SERIES - C026 MOD			
		PRODUCT SPEC 108-151052	SIZE A2			
MATERIAL 		APPLICATION SPEC -	CAGE CODE 00779		DRAWING NO C=DRC26-50SXX-C026	
FINISH -		WEIGHT -	SCALE 3:2		SHEET 1 OF 1	
		CUSTOMER DRAWING		REV A		