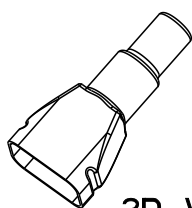
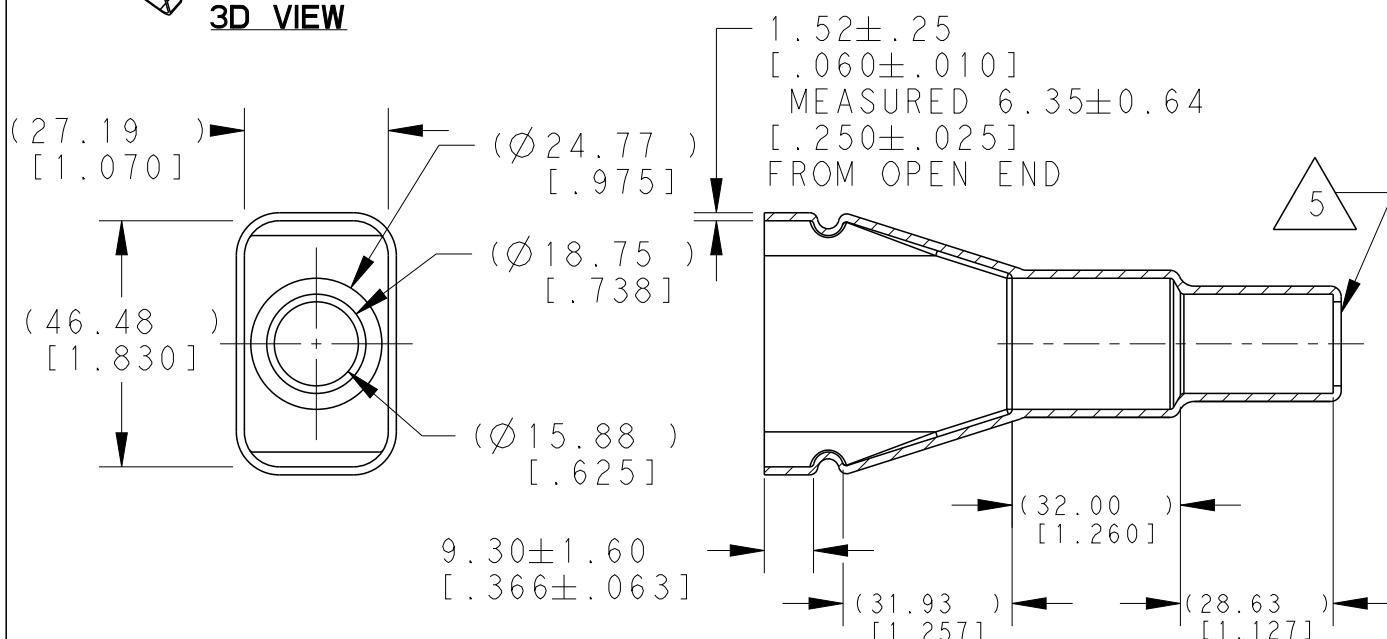


REVISIONS					
P	LTR	DESCRIPTION	DATE	DWN	APVD
	A	NEW RELEASE PER ECO-14-009836	07-01-14	DM	DM
	A1	REVISED PER PCN E-18-006789	03MAY2018	SM	DM
	A2	REVISED PER PCN E-20-004962	02APR2020	AP	IG

**3D VIEW**

6. SMALL NON-FILLS ARE ACCEPTABLE INSIDE OF THE PART, INCLUDING SUPPLIER MARKING.

5. SMALL MATERIAL EXTENSIONS ARE ACCEPTABLE ON THIS END ALL AROUND. WALL THICKNESS ON THIS END MAY VARY.

4. BOTTOM OF PART IS MOLDED OPEN.

3. THIS ACCESSORY PART IS PROVIDED WITHOUT TYPICAL TRANSPORTATION INDUSTRY PROCESS CONTROLS. NO VALIDATION TESTING HAS BEEN PERFORMED. CUSTOMER IS RESPONSIBLE FOR DETERMINING PRODUCT PERFORMANCE AND SUITABILITY FOR APPLICATION.

2. TEMPERATURE RATING: -29°C TO $+100^{\circ}\text{C}$ [-20°F TO $+212^{\circ}\text{F}$]

1. THIS PART IS USED ON DRC26-24SX-XXXX PLUG WHERE X=A,B,C,D KEYS AND XXXX=MODIFICATIONS

NOTES:

TE INTERNAL PN	DEUTSCH PN
DRC26-24BT	DRC26-24BT

DIMENSIONS: MM[INCH]		DWN D.MEYER	01JUL2014	MATERIAL PVC		FINISH BLACK	
TOLERANCES UNLESS OTHERWISE SPECIFIED: 0 PLC ± 1 PLC ± 2 PLC ±0.63[.025] 3 PLC ± 4 PLC ± ANGLES ±5°		CHK D.HASIBUAN	01JUL2014	<div>≡TE</div> TE Connectivity			
		APVD D.MEYER	01JUL2014				
		PRODUCT SPEC		NAME BOOT, 24PIN DRC SERIES			
		APPLICATION SPEC					
		WEIGHT 30.00 G		SIZE A 4	CAGE CODE 4AFU8	DRAWING NO C=DRC26-24BT	RESTRICTED TO
CUSTOMER DRAWING				SCALE 7:10	SHEET 1 OF 1	REV A2	