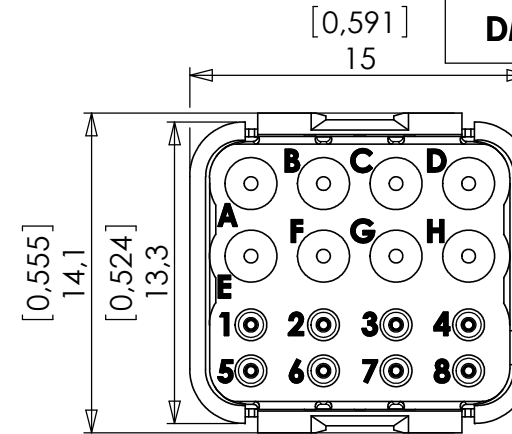
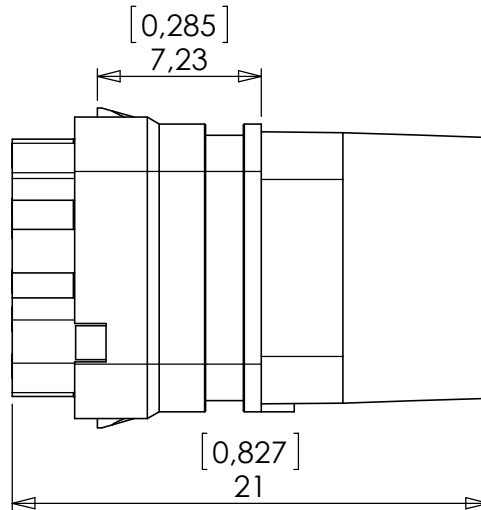
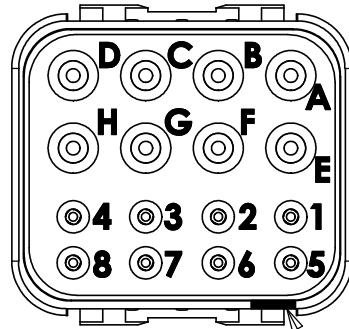


Issue de la norme EN4165
Arise of EN4165 standard

DMC-M 99-03 BX

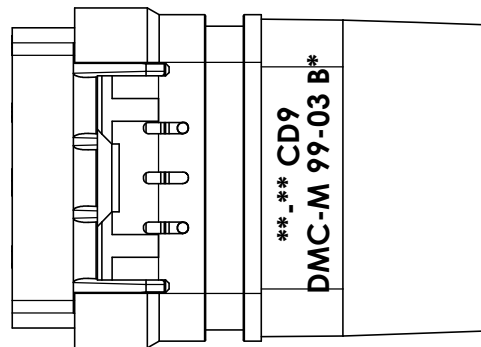
EX



X: Codage A,B,C,D ou N (universel)
X: Keying A,B,C,D or N (universal)
(1)

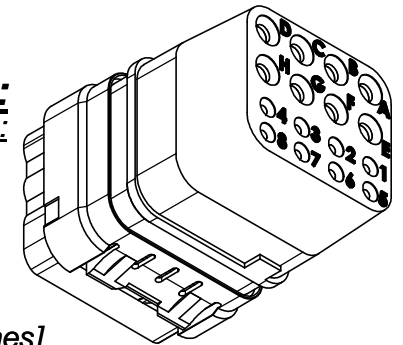
CARACTERISTIQUES:

- Température d'utilisation:** -55°C à +175°C
Matériaux: Thermoplastique, silicone fluoré jaune
Tenue de tension:
 - 1300 V eff. ; 50Hz
Masse: 3,4g Maxi
Dimensions: Millimètres [pouces]
Utilisation de Contacts:
 - 8 contacts #20 - EN3155-003F2020
 - 8 contacts #24 - 724-0003-24
Outils insertion/extraction:
 - #20 - M15570-20
 - #24 - 605837



CHARACTERISTICS:

- Operating temperature range:**
 -55°C to +175°C
Material: Thermoplastic and yellow fluorosilicone
Withstand voltage:
 - 1300 V eff ; 50Hz
Weight: 3,4g Maxi
Dimensions: Millimeters [inches]
Use of contacts:
 - 8 Socket #20 - EN3155-003F2020
 - 8 Socket #24 - 724-0003-24
Insertion/extraction tool fo contact:
 - #20 - M15570-20
 - #24 - 605837



Module livré sans contacts / Module delivered without contacts

b	19/07/2013	OE250713	SERIE DMC-M	DATE 03-07-2012	VISA Creation Created	VISA Approval Approval
a	11/07/2013	OE150713				
Revision	Date	Observations	DESIGNATION	REF :	DMC-M 99-03 BX	
ORIGINE :	DE094/12		Module Femelle High-speed #20 - #24 Female High-speed Module #20 - #24	P/N:	(1)	



Connecteurs Electriques Deutsch
 17, rue LAVOISIER - BP 117 - 27091 EVREUX CEDEX 09 - FRANCE

FICHE TECHNIQUE
TECHNICAL DATA SHEET

204-19-B/F00