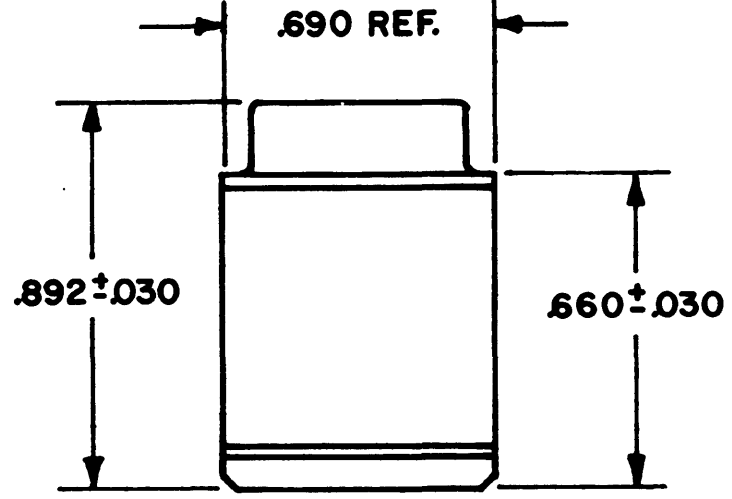
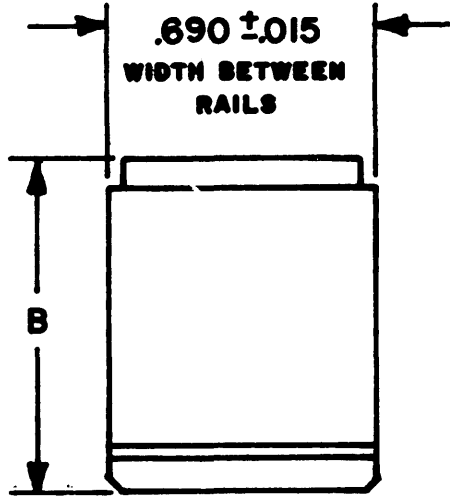
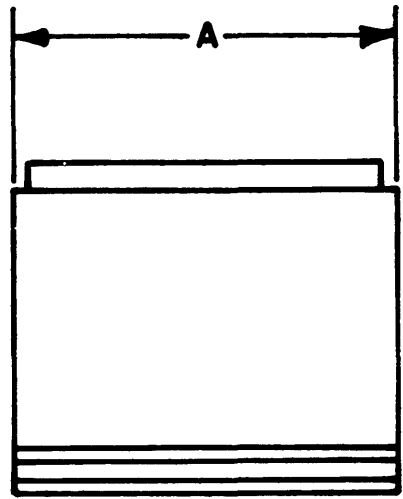


DJ11E-XX-XX	REVISIONS			
	SYM	DESCRIPTION	DATE	APPROVED
	B	REV. & REDR. PER E.O. 54077	11-4-68	D.G.B. 11-13-68
	C	REV (I) PER E.O. 54097	12-4-68	D.G.B. 12-16-68
	D	REV PER E.O. 95972	2-2-83	T.H.

PART NUMBER	SIZE	WT. IN LBS. APPROX	A ±.015	B ±.030
DJ11E-05-**-**	16	.032	.980	.747
DJ11E-07-**-**	12	.048	1.274	.807
DJ11E-02-**-**	20		.690	.758



DJ11E-07-XX WITH WIRE SUPPORT

6. FOR CONTACT DATA SEE ENV. DWG. 61800.
5. MODULE ASSEMBLY WEIGHTS SHOWN INCLUDE 8 CONTACTS.
4. DJ11E-\*\*-\*\*-\*\*
3. THESE MODULE SIZES MAY BE USED IN SIZE 1 FRAME ONLY.
2. THE BUS IDENTIFICATION WILL BE SCREENED ON MODULE ASSY. FOR AVAILABLE MODULE ARRANGEMENT SEE CATALOG ENVELOPE DWG. 61521.
1. SEE "GENERAL DESCRIPTION" FOR ELECTRICAL AND MATERIAL SPECIFICATION.

NOTES:

11-4-68	SIGNATURE & DATE	MODULE ASSEMBLY DISTRIBUTION JUNCTION  TYPE I ENVIRONMENTAL  ENVELOPE	CP	MATL. CODE	
DR	R. BARTLEY		The Deutch Company ELECTRONIC COMPONENTS DIVISION Municipal Airport Banning, California		
CHK	T.S. Fisher 11-13-68		B	DJ11E-XX-XX	
PE	D.G. Block 11/2/68			DWG SIZE	CODE 11139 SHEET   OF
APPD			SCALE NONE	WT	