

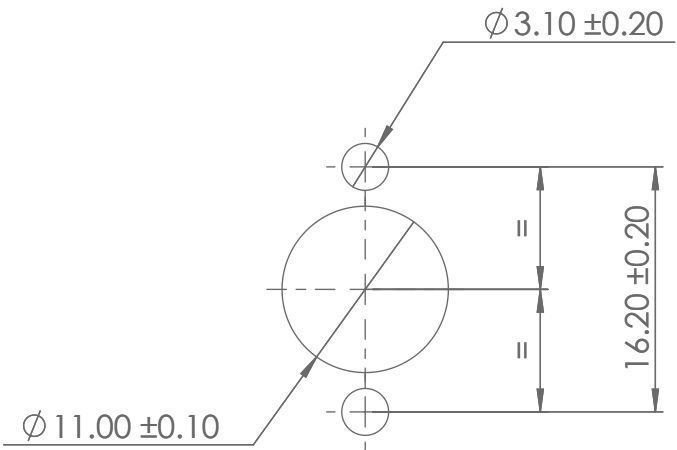
PART No. & BATCH No.
MARKED OVER COLOUR BAND
SEE NOTES 1 & 2

NOTES:


- CONNECTOR ROIENTATION IDENTIFIED BY COLOUR BAND COLOUR APPLIED AS BELOW
N ORIENTATION - RED D ORIENTATION - GREEN
A ORIENTATION - YELLOW E ORIENTATION - GREY
B ORIENTATION - BLUE U ORIENTATION - VIOLET
C ORIENTATION - ORANGE
- PART NUMBER, SEE BELOW FOR EXAMPLE:-

DEUTSCH ASCX 0 03 - 1 P N - 050 RP654321
SERIES PREFIX SHELL STYLE SHELL SIZE CONTACT LAYOUT BATCH NUMBER CONTACT RATING ORIENTATION CONTACT TYPE

- THIS PART IS RoHS COMPLIANT.
- FOR COAX CONTACT ASSEMBLY INSTRUCTIONS PLEASE REFER TO 610992.



RECOMMENDED PANEL CUTOUT DETAIL

							MATERIAL		<div>© THE COPYRIGHT OF THIS DRAWING IS RESERVED BY DEUTSCH UK. IT IS ISSUED ON CONDITION THAT IT IS NOT COPIED, REPRODUCED OR DISCLOSED TO A THIRD PARTY EITHER WHOLLY OR IN PART WITHOUT THE CONSENT IN WRITING OF DEUTSCH UK.</div> <div>GENERAL TOLERANCES UNLESS OTHERWISE STATED. ±0.4mm ON WHOLE NUMBERS ±0.2mm ON ONE PLACE DECIMALS ±0.1mm ON TWO PLACE DECIMALS ±1/2° ON ANGLES ±0.05mm ON DRILLED HOLES ALL DIAMETERS TO Ø 0.10 REMOVE ALL BURRS AND SHARP EDGES 0.1 MAX. UNLESS OTHERWISE STATED. DIMENSIONS IN MILLIMETRES UNLESS OTHERWISE STATED</div>		<div>DEUTSCH</div> <div>ST LEONARDS ON SEA, EAST SUSSEX, TN38 9RF TEL. +44 (0)1424 852721</div>		<div>TITLE ASCX SIZE 3 RECEPTACLE ENVELOPE DETAILS SINGLE WAY COAX</div>		<div>DRAWING NUMBER 610877-ENV</div>	
							HEAT TREATMENT & FINISH									
							PACKAGING									
A	59205	ADH	NDL	NDL	D.WATTERS	12/10/10			SCALE	2:1						
ISSUE	CHANGE NOTE	DRAWN	CHECKED	APP. ENG.	APP. MARKETING	DATE	APP. I.E.D.									