

THIS INFORMATION IS CONFIDENTIAL AND PROPRIETARY TO TYCO ELECTRONICS CORPORATION AND ITS WORLDWIDE SUBSIDIARIES AND AFFILIATES (TE). IT MAY NOT BE DISCLOSED TO ANYONE OTHER THAN TE PERSONNEL WITHOUT AUTHORIZATION FROM TE (www.te.com).

DRAWING NUMBER:
456868-ENV

B

C

D

E

F

1

2

3

4

5

6

7

8

A

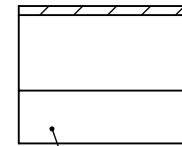
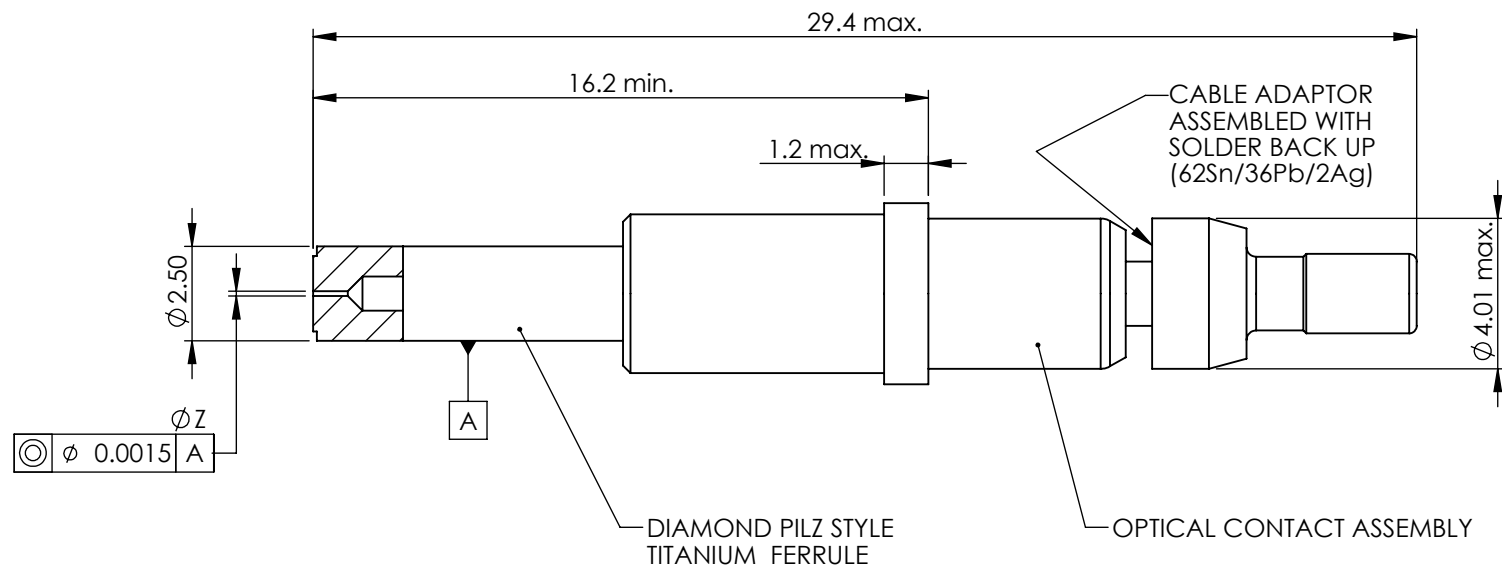
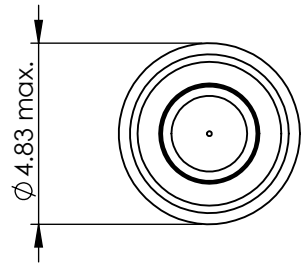
B

C

D

E

F



MATERIAL: BRASS TO BS2874
FINISH: ELECTROLESS NICKEL PLATE

NOTES:

1. TERMINI TO BE FITTED WITH PROTECTIVE CAPS. ASSEMBLY TO BE PACKED IN A BOX MARKED WITH A MINIMUM OF THE PART NUMBER AND ITEM DESCRIPTION.
2. WEIGHT 2.3g MAX
3. TE PART NUMBER EXAMPLE: 456868 - 130 - 01

BASIC PART No

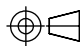

DIAMETER 'Z':

085: 85µm
130: 130µm

TO SUIT CABLE DIAMETER:

01: 2.5mm
04: 2.1mm

AA	DUK-69677	MJH	NPO	MJH	CP	20/08/2018
ISSUE	CHANGE NOTE	DRAWN	CHECKED	APP. ENG.	APP. MARKETING	DATE

BS8888 THIRD ANGLE PROJECTION 		MATERIAL: SEE BOM		FINISH: CLEAN		 DEUTSCH TE CONNECTIVITY UK LTD., ST. LEONARDS-ON-SEA, TN38 9RF, UK.	
UNLESS OTHERWISE STATED: DIMENSIONS: mm [INCHES]		TITLE: MC3/2 OPTICAL TERMINI, "PILZ" FERRULE TYPE: CUSTOMER DRAWING					
IF IN DOUBT, ASK		SIZE: A3	SCALE: 2:1	DRAWING NUMBER: 456868-ENV		SHEET: 1 OF 1	ISSUE: AA

1

2

3

4

5

6

7

8