

THIS INFORMATION IS CONFIDENTIAL AND PROPRIETARY TO TYCO ELECTRONICS CORPORATION AND ITS WORLDWIDE SUBSIDIARIES AND AFFILIATES (TE). IT MAY NOT BE DISCLOSED TO ANYONE OTHER THAN TE PERSONNEL WITHOUT AUTHORIZATION FROM TE (www.te.com).

DRAWING NUMBER:  
**455494-ENV**

B

C

D

E

F

1

2

3

4

5

6

7

8

A

B

C

D

E

F

2. NICKEL PLATED BRASS CRIMP SLEEVE

OPTICAL CONTACT ASSEMBLY INCLUDING CERAMIC FERRULE AND ARCAP/CW400J BODY

NOTES:

1. TERMINI TO BE FITTED WITH DUST CAP AND PACKED IN A BAG MARKED WITH A MINIMUM OF THE PART NUMBER AND ITEM DESCRIPTION

2. CRIMP SLEEVE NOT SUPPLIED FOR BUFFERED FIBRE -00 VARIANT

3. FOR REFERENCE: CRIMP TOOL A/F SIZES

FOR CRIMP SIZE 00: 1.64/1.74mm  
FOR CRIMP SIZE 00, 01, 02, 04: 3.02/3.10mm  
FOR CRIMP SIZE 03: 3.48/3.56mm

4. EXAMPLE OF PART NUMBER: 455494 - 127 - 00

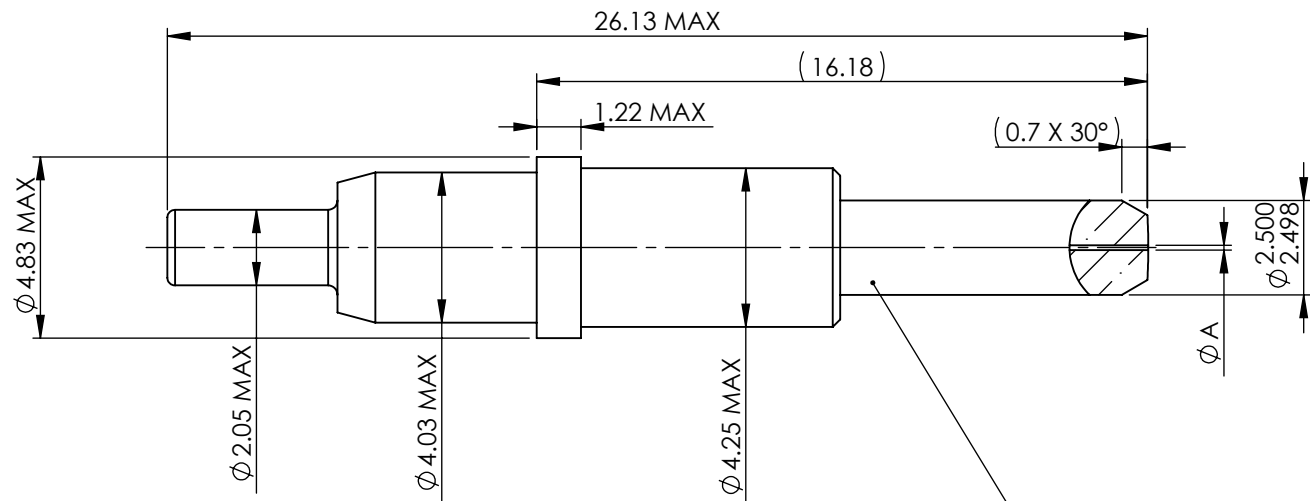
BASIC PART NUMBER

CABLE DIAMETER:



BORE SIZE ØA NOM:

00: 900µm PLAIN BUFFERED FIBRE  
01: 2.50mm  
02: 1.80mm  
03: 3.00mm  
04: 2.10mm

126 176  
127 223  
128 232  
141 267  
145 274  
162 283  
305



AA	DUK-71517	MJH	NPO	MJH	CP	15/04/2020
ISSUE	CHANGE NOTE	DRAWN	CHECKED	APP. ENG.	APP. MARKETING	DATE

BS8888 THIRD ANGLE PROJECTION 	MATERIAL:		FINISH:	  DEUTSCH TE CONNECTIVITY UK LTD., ST. LEONARDS-ON-SEA, TN38 9RF, UK.	
	UNLESS OTHERWISE STATED: DIMENSIONS: mm [INCHES]		TITLE: TYPE: CUSTOMER DRAWING MC3, OPTICAL CONTACT ASSEMBLY, RIGID,		
IF IN DOUBT, ASK	SIZE: A3	SCALE: 2:1	DRAWING NUMBER: 455494-ENV		SHEET: 1 OF 1 ISSUE: AA