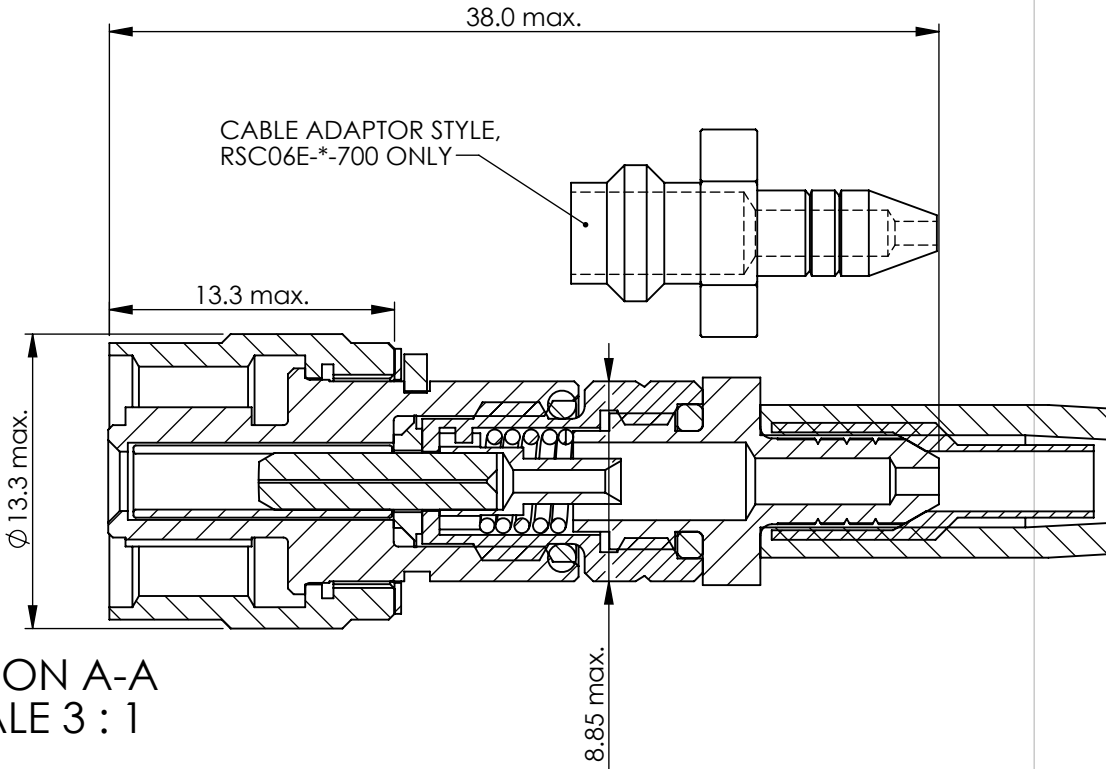
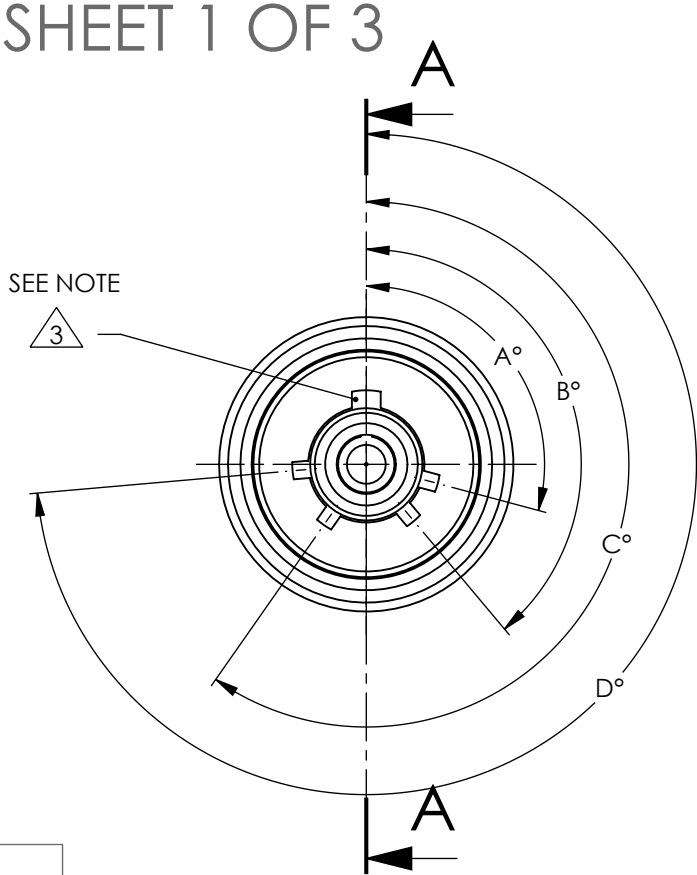


TABLE 2	
PART No	CABLE DIA.
RSC06E-*-100	2.50
RSC06E-*-100X	2.80
RSC06E-*-180	1.80
RSC06E-*-200	2.00
RSC06E-*-300	1.70
RSC06E-*-400	3.00
RSC06E-*-500	3.20
RSC06E-*-600	2.10
RSC06E-*-700	1.60
RSC06E-*-800	3.70
RSC06E-*-900	5.00



SECTION A-A  
SCALE 3 : 1

TABLE 3					
PART No	KEYWAY POS'N	A°	B°	C°	D°
RSC06E-U-***	UNIVERSAL				
RSC06E-N-***	NORMAL	105	140	215	265
RSC06E-A-***	A	102	132	248	320
RSC06E-B-***	B	80	118	230	312
RSC06E-C-***	C	35	140	205	275
RSC06E-D-***	D	64	155	234	304
RSC06E-E-***	E	91	131	197	240

TABLE 1 - CABLE FITTING VARIANTS	
	43 max.
STANDARD CRIMP SLEEVE AND FLUOROSILICONE BOOT	
STEPPED CRIMP SLEEVE AND FLUOROSILICONE BOOT FOR RSC06E-*-700 VARIANTS ONLY.	
STRAIGHT CRIMP SLEEVE H.S. SLEEVE FOR RSC06E-*-800 AND RSC06E-*-900 VARIANTS ONLY	

- NOTES:
1. DATE CODE AND PART No EXAMPLE  
DATE CODE H9904D RSC06E-\* \*\*\* CABLE REF No  
SUITABLE SPACE  
CONNECTOR TYPE KEY WAY ORIENTATION N,A,B,C,D,E,U
2. FERRULE ASSY NOT SUPPLIED WITH CONNECTOR
3. MASTER KEY ONLY FOR RSC06E-U-\*\*\* UNIVERSAL PLUG, INTERMATEABLE WITH ALL KEYWAY VARIANTS ON RSC RECEPTACLE CONNECTORS
4. SEE TABLE 1 FOR CABLE FITTING VARIANTS. STANDARD CRIMP SLEEVE AND FLUOROSILICONE BOOT SUPPLIED WITH ALL VARIANTS UNLESS OTHERWISE DETAILED
5. C.A.S. BREAKDOWN OF RSC06E-\*-100 ON SHEETS 2 AND 3

M	60343	MJH	ADH	RBC	GLB	27/06/11
ISSUE	CHANGE NOTE	DRAWN	CHECKED	APP. ENG.	APP. MARKETING	DATE

MATERIAL

HEAT TREATMENT & FINISH

PACKAGING

APP. I.E.D

SCALE

THE COPYRIGHT OF THIS DRAWING IS RESERVED BY DEUTSCH UK. IT IS ISSUED ON CONDITION THAT IT IS NOT COPIED, REPRODUCED OR DISCLOSED TO A THIRD PARTY EITHER WHOLLY OR IN PART WITHOUT THE CONSENT IN WRITING OF DEUTSCH UK.

TITLE  
RSC PLUG ASSEMBLY  
ENVELOPE DRAWING

NTS

ST LEONARDS ON SEA, EAST SUSSEX, TN38 9RF  
TEL. +44 (0)1424 852721



DRAWING NUMBER

454652-ENV



Diagram illustrating the components of a cable assembly connector, showing an exploded view of the parts:

- BOOT
- CABLE ADAPTOR WIDE
- O-RING 3.0
- O-RING 4.0
- CERAMIC SPLIT WASHER SLEEVE
- CLICKER BALL
- CLICKER SPRING MOLYKOTE LITE
- COUPLING RING
- CRIMP SLEEVE
- FERRULE SPRING
- PLUG FERRULE
- CRESCENT RING
- PLUG INNER
- SOLDER PERFORM
- PLUG SHELL
- PRINT DETAIL

<b>MATERIAL</b>		 THE COPYRIGHT OF THIS DRAWING IS RESERVED BY DEUTSCH UK. IT IS ISSUED ON CONDITION THAT IT IS NOT COPIED, REPRODUCED OR DISCLOSED TO A THIRD PARTY EITHER WHOLLY OR IN PART WITHOUT THE CONSENT IN WRITING OF DEUTSCH UK.	 <b>DEUTSCH</b> LEONARDS ON SEA, EAST SUSSEX, TN38 9R TEL. +44 (0)1424 852721
<b>HEAT TREATMENT &amp; FINISH</b>			
<b>PACKAGING</b>			
<b>APP. I.E.D</b>		<b>TITLE</b> RSC PLUG ASSEMBLY ENVELOPE DRAWING	<b>DRAWING NUMBER</b>  <h1>454652-ENV</h1>
<b>SCALE</b>	NTS		