

THIS INFORMATION IS CONFIDENTIAL AND PROPRIETARY TO TYCO ELECTRONICS CORPORATION AND ITS WORLDWIDE SUBSIDIARIES AND AFFILIATES (TE). IT MAY NOT BE DISCLOSED TO ANYONE OTHER THAN TE PERSONNEL WITHOUT AUTHORIZATION FROM TE (www.te.com).

DRAWING NUMBER:  
**454651-ENV**

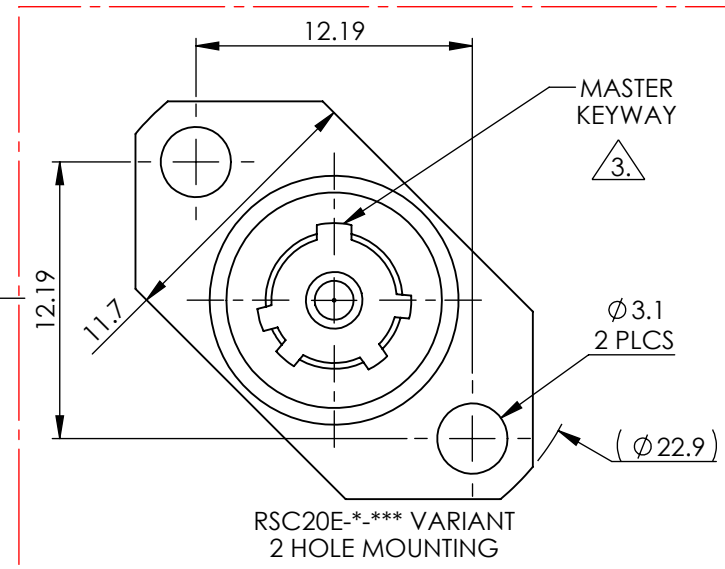
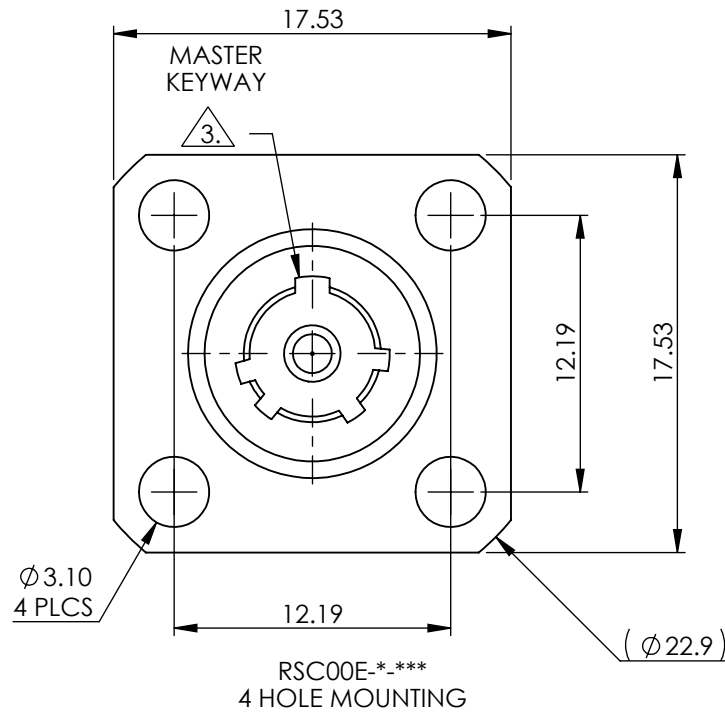
B

C

D

E

F



NOTES:

- ITEM TO BE PACKED IN A PLASTIC BAG MARKER WITH A MINIMUM OF TE PART NUMBER AND DATE CODE
- FERRULE ASSEMBLY NOT SUPPLIED WITH CONNECTOR, SEE D456099-ENV
- MASTER KEYWAY ONLY FOR RSC00E-U-\*\*\*. UNIVERSAL CONNECTOR INTERMATEABLE WITH ALL KEY VARIANTS ON RSC PLUG
- DATE CODE AND PART NUMBER: H9904D RSC00E - N - \*\*\*

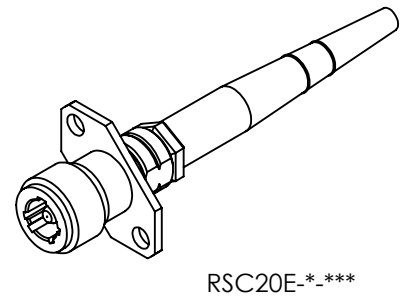
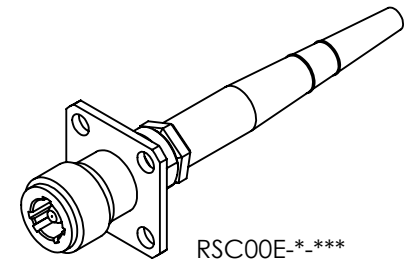
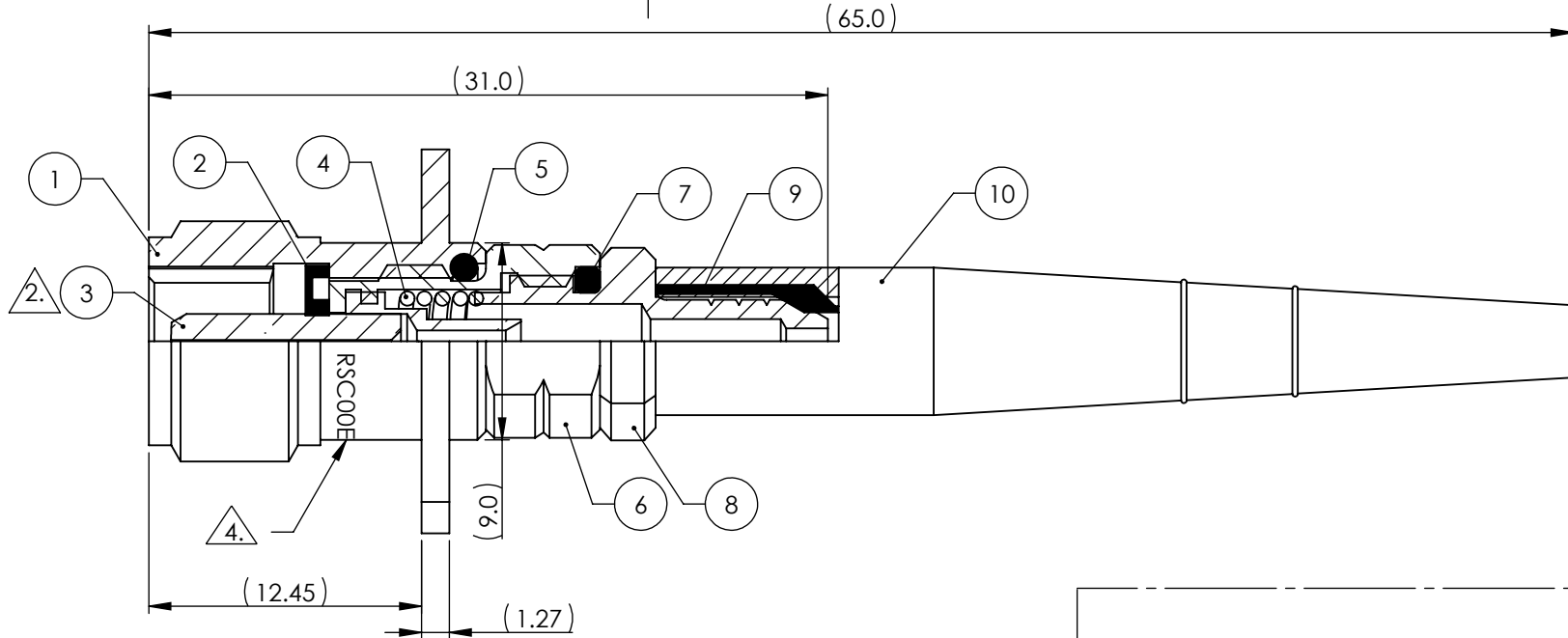
DATE CODE  
CONNECTOR TYPE:  
RSC00E : 4 HOLE MOUNTING  
RSC20E: 2 HOLE MOUNTING

KEY:  
N, A, B, C, D, E, U

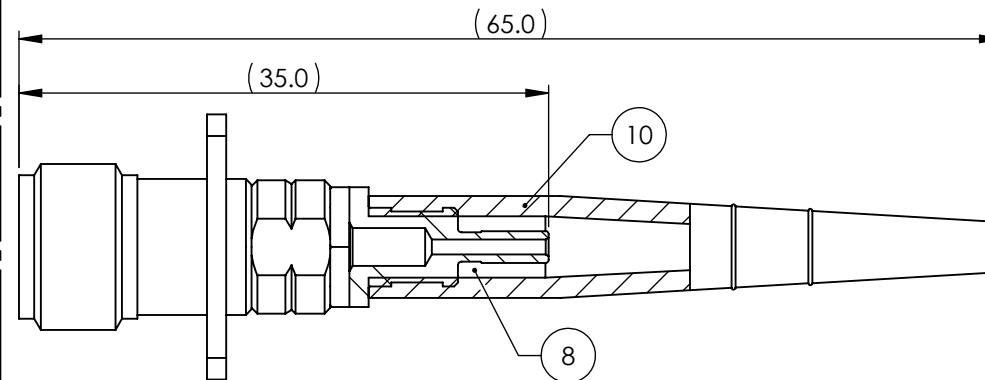
CABLE DIAMETER:

090 = Ø0.9mm  
100 = Ø2.5mm  
180 = Ø1.8mm  
200 = Ø2.0mm  
300 = Ø1.65mm  
400 = Ø3.0mm  
500 = Ø3.2mm  
600 = Ø2.1mm  
700 = Ø1.6mm (GLASS BRAID)  
800 = Ø3.7mm  
900 = Ø5.0mm

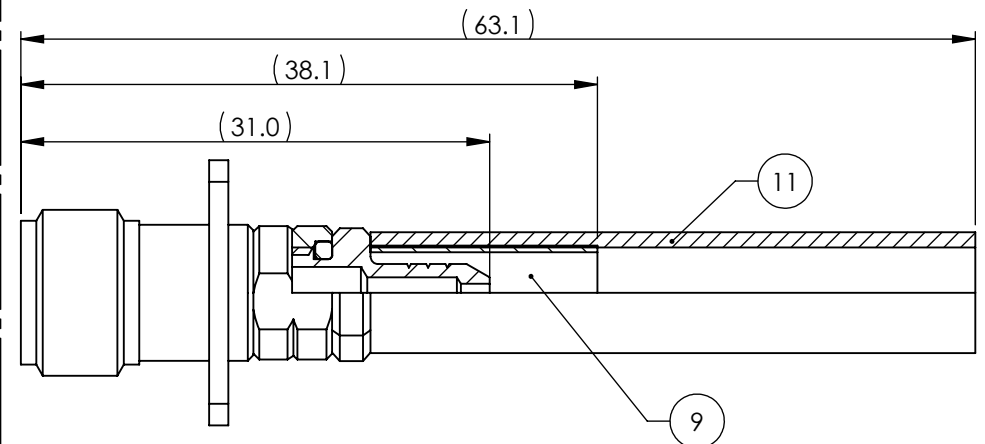
ITEM No	DESCRIPTION
1	RECEPTACLE SHELL
2	FRONT SEAL (FITTED)
3	RSC TERMINI ( SEE NOTE 2)
4	SPRING
5	O-RING 4.0 X 1.25 (FITTED)
6	PLUG FERRULE CARRIER
7	O-RING 3.0 X 1.5(FITTED)
8	CABLE ADAPTOR
9	CRIMP SLEEVE
10	STRAIN RELIEF BOOT
11	HEATSHRINK SLEEVE

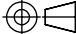



RSC00E-\*090 VARIANT, NO CRIMP SLEEVE, REDUCED DIAMETER CABLE ADAPTER



RSC00E-\*800 AND RSC00E-\*900 VARIANTS  
STRAIGHT CRIMP SLEEVE AND HEAT SHRINK



BS8888 THIRD ANGLE PROJECTION 		MATERIAL: <b>SEE TABLE</b>		FINISH:		 <b>DEUTSCH</b> TE CONNECTIVITY UK LTD ST. LEONARDS-ON-SEA, TN38 9RF, UK.	
UNLESS OTHERWISE STATED: DIMENSIONS: <b>mm</b> [INCHES]		TITLE: <b>RSC RECEPTACLE ASSEMBLY</b>				TYPE: CUSTOMER DRAWING	
IF IN DOUBT, ASK		SIZE: <b>A3</b>	SCALE: <b>1:1</b>	DRAWING NUMBER: <b>454651-ENV</b>		SHEET: <b>1 OF 1</b>	ISSUE: <b>AA</b>

1

2

3

4

5

6

7

8