

THIS DRAWING IS UNPUBLISHED.

RELEASED FOR PUBLICATION

150323

© COPYRIGHT 150323

BY -TYCO ELECTRONICS

ALL RIGHTS RESERVED.

LOC

DIST

REVISIONS

P	LTR	DESCRIPTION	DATE	DWN	APVD
	B	REVISED PER ECO-20-002993	200302	SS	AR
	C	REVISED PER ECO-20-007160	200521	SS	AR
	D	REVISED PER ECO-21-007948	2021JAN25	JCC	AR
	E	REVISED PER ECN-24-255382	2024MAR11	SA	DM

D3JFD35PN2CHG-ND

1.0 NO ALIGNMENT DISK

1.1 EXTENDED TAIL FINISH

G = GOLD    T = TIN    R = ROHS SOLDER DIP    L = >3% LEAD SOLDER DIP (TIN FREE)

1.2 CONTACT STANDOFF LENGTH AND REAR DIAMETER

OPTION	L±.010	ØD ±.001 SIZE 22 CONTACT	ØD ±.001 SIZE 20 CONTACT	ØD ±.001 SIZE 16 CONTACT	ØD ±.001 SIZE 12 CONTACT
G	.157	.019	.019	.044	.062
H	.157	.028	.028	.062	.062
K	.200	.019	.019	.044	.062
L	.200	.028	.028	.062	.062
M	.350	.019	.019	.062	.062
R	.300	.019	.019	.044	.062
S	.300	.028	.028	.062	.062
N	NO STAND OFF	.040	.060	.080	.120
W	REDUCED DIAMETER NO STAND OFF PROTRUSION FROM SHELL TO NOT EXCEED .015 MAX.	.019	.019	.044	.062
T		.019	.019	.062	.062
C		.025	.040	.080	.094
U		.028	.028	.062	.062

1.3 CONTACT EXTENSION LENGTH  
FROM INDIVIDUAL CONNECTOR SHEETS

1.4 REAR CONFIGURATION

1 = EPOXY AND NO ACCESSORY THREADS    3 = EPOXY WITH ACCESSORY THREADS

2 = GROMMET WITH ACCESSORY THREADS    4 = GROMMET WITH NO ACCESSORY THREADS

1.5 CLOCKING: N, A, B, C, D, E

1.6 CONTACT STYLE    P = PIN    S = SOCKET

1.7 INSERT ARRANGEMENT PER MIL-STD-1560. EXAMPLE: 25-35 IN THE 1560 = J35. SINGLE DIGIT ARRANGEMENTS  
WILL BE PRECEDED WITH "0". EXAMPLE: 11-5 ARRANGEMENT = B05

1.8

OPTION	A	B	C	D	E	F	G	H	J
SHELL SIZE	9	11	13	15	17	19	21	23	25

1.9 CLASS

F = NICKEL PLATED ALUMINUM    M = NICKEL PLATED COMPOSITE    T = TEFLON NICKEL PLATED ALUMINUM

W = OLIVE DRAB CADMIUM PLATED ALUMINUM    J = OLIVE DRAB CADMIUM PLATED COMPOSITE    Z = BLACK ZINC NICKEL PLATED ALUMINUM

G = SAME AS F SPACE GRADE    B = ALUMINUM NICKEL BRONZE

1.10 MOUNTING STYLE

C = SQUARE FLANGE WITH CLINCH NUTS (SHEETS 3 & 4)    H = SQUARE FLANGE WITH HELICOILS (SHEETS 3 & 4)

S = STANDARD SQUARE FLANGE (SHEETS 3 & 4)    J = JAM NUT (SHEET 2 & 7)

F = DOUBLE FLANGE JAM NUT (SHEET 6)    N = STANDARD JAM NUT RECEPTACLE (SHEET 8)

D = DOUBLE FLANGE SQUARE FLANGE (SHEET 5)

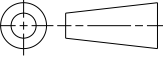
1.11 BASIC IDENTIFIER: EXTENDED PIN D38999 TYPE SERIES III  
RECEPTACLE CONNECTOR

1. NOT EVERY POSSIBLE PART NUMBER IS VALID AND AVAILABLE. PART NUMBERS WILL BE  
REVIEWED BY TE CONNECTIVITY FOR VALIDITY AND AVAILABILITY.

NOTES: UNLESS OTHERWISE SPECIFIED.

THIS DRAWING IS A CONTROLLED DOCUMENT.

DIMENSIONS:  
INCHES



TOLERANCES UNLESS  
OTHERWISE SPECIFIED:

0 PLC ±.1  
1 PLC ±.01  
2 PLC ±.005  
3 PLC ±.0005  
4 PLC ANGLES ±.5°  
FINISH

MATERIAL


PER CLASS

DWN  
EHAB ALAWNEH  
CHK  
CRAIG BROWN  
APVD  
ALEX RENGIFO

150323  
150323  
160614

PRODUCT SPEC  
-  
APPLICATION SPEC  
-  
WEIGHT  
-

CUSTOMER DRAWING

 TE Connectivity

NAME  
PCB RECEPTACLES  
D38999 TYPE

SIZE  
A2

CAGE CODE  
111139

DRAWING NO  
D3XXXXXXXXXXXX

RESTRICTED TO  
-

SCALE  
1.000

SHEET  
1

OF  
8

REV  
E

1471-9 (3/11)

THIS DRAWING IS UNPUBLISHED.

RELEASED FOR PUBLICATION

150323

© COPYRIGHT 150323

BY -TYCO ELECTRONICS

ALL RIGHTS RESERVED.

LOC-

DIST-

REVISIONS

P	LTR	DESCRIPTION	DATE	DWN	APVD
-	-	SEE SHEET 1	-	-	-

38999/24

3X A

2X B

C FLAT

DISTANCE FROM FRONT OF JAM NUT FLANGE (1.3 SHEET 1)

MOUNTING STYLE J (1.10 SHEET 1)

REAR CONFIG 2 & 3 (1.4 SHEET 1)

TABLE 1 CONTACT EXTENSION LENGTH

PART NUMBER	DISTANCE FROM GROMMET ±.025	DISTANCE FROM FRONT OF JAM NUT FLANGE ±.025		DISTANCE FROM REAR OF SAW TEETH ±.025	
	ALL CLASSES	CLASSES F, W, T, Z, G	CLASSES J, M	CLASSES F, W, T, Z, G	CLASSES J, M
D3JxxxxxxxxAxx	.163	.533	.541	.163	.115
D3JxxxxxxxxBxx	.210	.580	.588	.210	.162
D3JxxxxxxxxCxx	.230	.600	.608	.230	.182
D3JxxxxxxxxDxx	.266	.632	.644	.266	.218
D3JxxxxxxxxExx	.314	.684	.682	.314	.256
D3JxxxxxxxxFxx	.365	.735	.743	.365	.317
D3JxxxxxxxxGxx	.430	.800	.808	.430	.382
D3JxxxxxxxxHxx	.470	.840	.848	.470	.422

38999/24

.875 REF.

D

E

H THREAD

.499±.010

DISTANCE FROM THE GROMMET OR SAWTEETH, THE GROMMET COULD BE RECESSED BEYOND SAWTEETH (TABLE 1)

ALIGNMENT DISK (REMOVAL OF THIS DISK IS OPTIONAL FOR END USER MATERIAL: FR4 OR G10)

CLASSES F,W,G,T,Z = .378 MAX.  
CLASSES J & M = .440 MAX.

TABLE 2

SHELL SIZE	H THREAD	A	B±.015	C FLAT ±.005	D PANEL THICKNESS	E CLASSES F, W, T, Z, G	E CLASSES J, M
09	M17x1.0-6g 0.100R	0.905 0.859	1.063	.651	.062/.126	.089/.095	.104/.109
11	M20x1.0-6g 0.100R	1.023 0.984	1.252	.751	.062/.126	.089/.095	.104/.109
13	M25x1.0-6g 0.100R	1.220 1.172	1.374	.938	.062/.126	.089/.095	.104/.109
15	M28x1.0-6g 0.100R	1.338 1.296	1.500	1.062	.062/.126	.089/.095	.104/.109
17	M32x1.0-6g 0.100R	1.456 1.422	1.626	1.187	.062/.126	.089/.095	.104/.109
19	M35x1.0-6g 0.100R	1.614 1.546	1.811	1.312	.062/.138	.120/.125	.114/.119
21	M38x1.0-6g 0.100R	1.811 1.672	1.937	1.437	.062/.138	.120/.125	.114/.119
23	M41x1.0-6g 0.100R	1.850 1.796	2.063	1.562	.062/.138	.120/.125	.114/.119
25	M44x1.0-6g 0.100R	2.017 1.939	2.189	1.687	.062/.138	.120/.125	.114/.119

3. FOR APPLICABLE KEYING DIAGRAM, SEE MIL-DTL-38999. FOR INSERT ARRANGEMENTS, SEE MIL-STD-1560. CONSULT FACTORY FOR AVAILABILITY.

2. GENERAL SPECIFICATIONS: THIS CONNECTOR IS INTERMATEABLE WITH MIL-DTL-38999 SERIES III, AND IS DESIGNED USING SIMILAR MATERIALS AND PROCESSES AS OUR QUALIFIED 38999 PRODUCTS.

1. ALL DIMENSIONS ARE IN INCHES UNLESS OTHERWISE SPECIFIED. THREAD CALLOUT IS METRIC.

NOTES: UNLESS OTHERWISE SPECIFIED.

MC: 63,64

FINISH:

DESCRIPTION:

MOUNTING TYPE J  
CONFIGURATION 2 & 3  
CLASSES: J, M, F, W, T, Z, & G

CAGE CODE: 11139

THIS DRAWING IS A CONTROLLED DOCUMENT.

DIMENSIONS: INCHES

TOLERANCES UNLESS OTHERWISE SPECIFIED:

0 PLC ±.1  
1 PLC ±.01  
2 PLC ±.005  
3 PLC ±.005  
4 PLC ±.0005  
ANGLES ±.5°  
FINISH

MATERIAL

PER CLASS

DWN: EHAB ALAWNEH

CHK: CRAIG BROWN

APVD: ALEX RENGIFO

PRODUCT SPEC

APPLICATION SPEC

WEIGHT

CUSTOMER DRAWING

150323

150323

160614

NAME: PCB RECEPTACLES D38999 TYPE

SIZE: A2

CAGE CODE: 11139

DRAWING NO: C-D3xxxxxxxxxxx

RESTRICTED TO: -

SCALE: 1.000

SHEET: 2

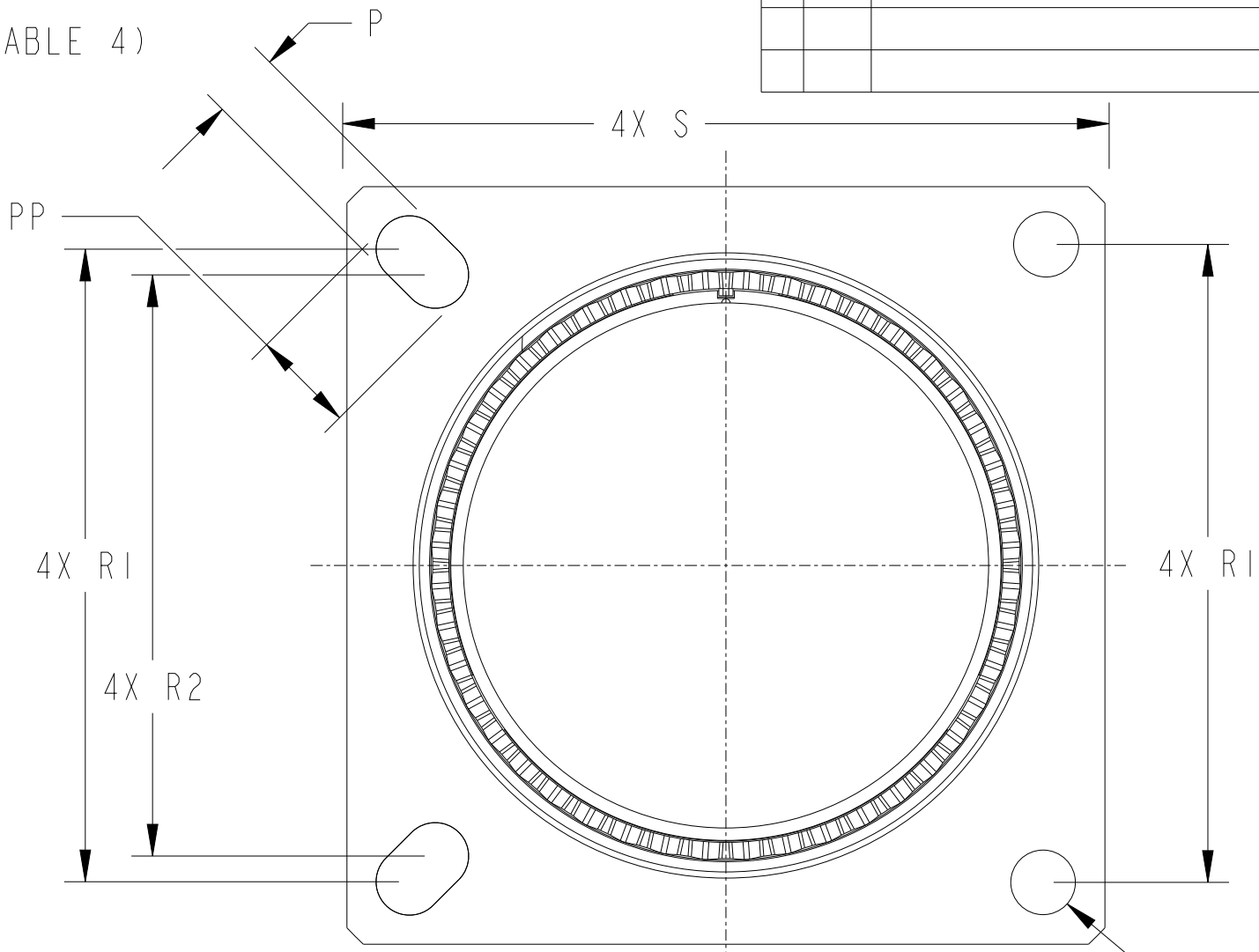
OF: 8

REV: E

TE Connectivity


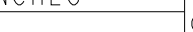
1471-9 (3/11)

LOC	DIST	REVISIONS					
		P	LTR	DESCRIPTION	DATE	DWN	APVD
-	-		-	SEE SHEET 1	-	-	-



MOUNTING STYLES  
C, H & S (1.10 SHEET 1)  
REAR CONFIGURATION 2 & 3 (1.4 SHEET 1)  
FOR CLASSES J AND M  
OPTION WITH HELICOILS (MOUNTING STYLE H)  
NOT AVAILABLE

PART NUMBER	DISTANCE FROM GROMMET ±.025		DISTANCE FROM BACK OF SQ FLANGE SIZES 9-19 ±.025		DISTANCE FROM BACK OF SQ FLANGE SIZES 21-25 ±.025		DISTANCE FROM REAR OF SAW TEETH ±.025	
	CLASSES F, W T, Z, G	CLASSES J, M	CLASSES F, W T, Z, G	CLASSES J, M	CLASSES F, W T, Z, G	CLASSES J, M	CLASSES F, W T, Z, G	CLASSES J, M
D3SxxxxxxxxAxx	.163		.550	.516	.527	.516	.174	.155
D3SxxxxxxxxBxx	.210		.597	.563	.574	.563	.221	.202
D3SxxxxxxxxCxx	.230		.617	.583	.594	.583	.241	.222
D3SxxxxxxxxDxx	.266		.653	.619	.630	.619	.277	.258
D3SxxxxxxxxExx	.314		.701	.667	.678	.667	.325	.306
D3SxxxxxxxxFxx	.365		.752	.718	.729	.718	.376	.357
D3SxxxxxxxxGxx	.430		.817	.783	.794	.783	.441	.422
D3SxxxxxxxxHxx	.470		.857	.723	.834	.857	.481	.462

MC: 63,64		FINISH:		THIS DRAWING IS A CONTROLLED DOCUMENT.		<div>DWN EAB ALAWNCH</div> <div>CHK CRAIG BROWN</div> <div>APVD ALEX RENGIFO</div> <div>PRODUCT SPEC -</div> <div>APPLICATION SPEC -</div> <div>WEIGHT -</div> <div>CUSTOMER DRAWING</div>		150323		<div>TE Connectivity</div>							
DESCRIPTION:  MOUNTING TYPE S, C, & H CONFIGURATION 2 & 3 CLASSES: J, M, F, W, T, Z, & G				DIMENSIONS: INCHES		TOLERANCES UNLESS OTHERWISE SPECIFIED:		NAME  PCB RECEPTACLES D38999 TYPE									
				<div></div>		0 PLC ± 1 PLC ±.1 2 PLC ±.01 3 PLC ±.005 4 PLC ±.0005 ANGLES ±.5°											
CAGE CODE: 11139				MATERIAL		FINISH		SIZE		CAGE CODE		DRAWING NO		RESTRICTED TO			
PER CLASS				-		-		A2		11139		C=D3XXXXXXXXXXXX		-			
								SCALE		1.000		SHEET 3		OF 8		REV E	

NOTES: UNLESS OTHERWISE SPECIFIED.



THIS DRAWING IS UNPUBLISHED.	RELEASED FOR PUBLICATION	150323
© COPYRIGHT 150323 BY -TYCO ELECTRONICS ALL RIGHTS RESERVED.		

LOC	DIST	REVISIONS					
		P	LTR	DESCRIPTION	DATE	DWN	APVD
-	-	-		SEE SHEET 1	-	-	-

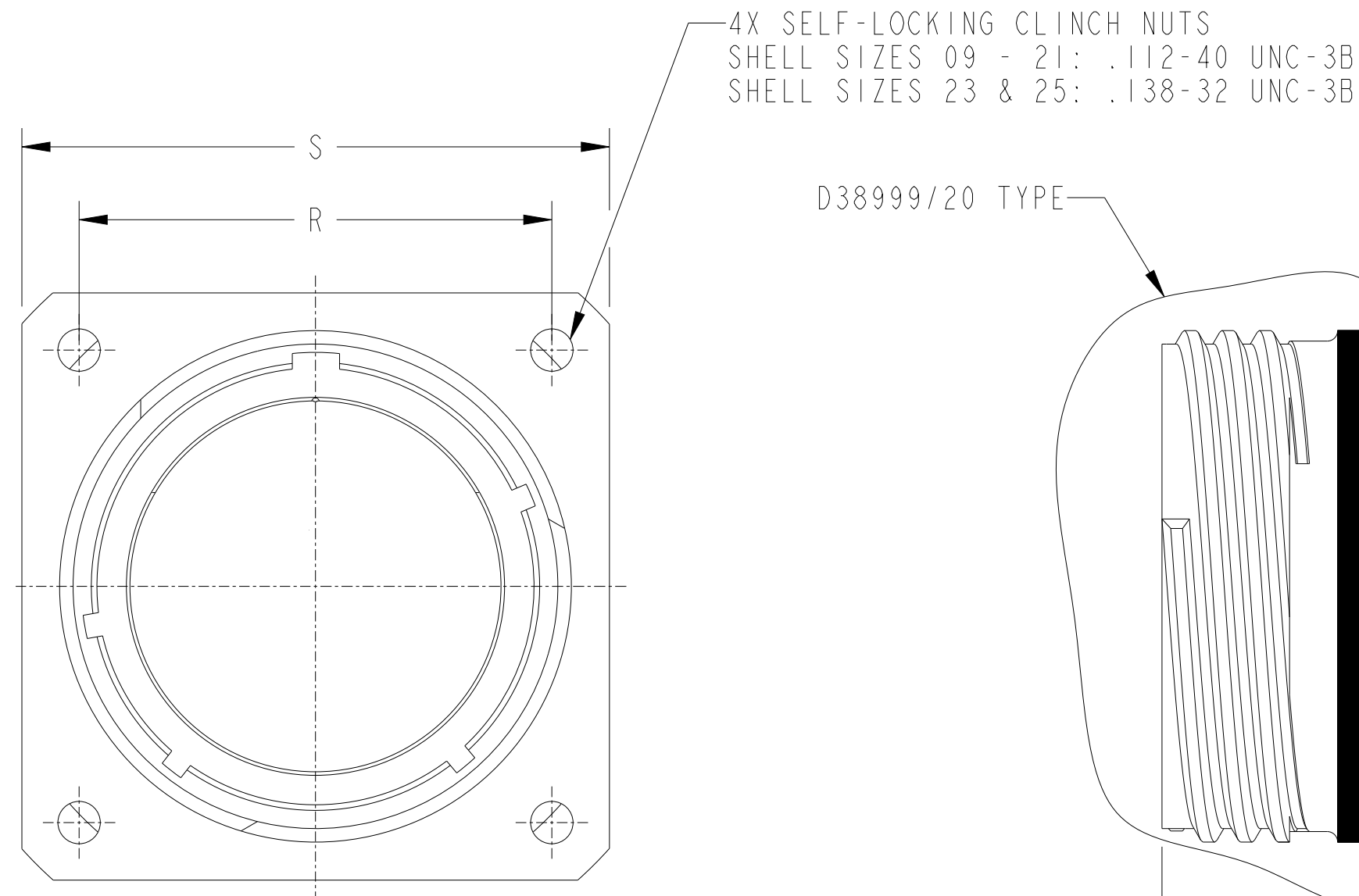


TABLE 7

<div style="text-align: right;">▶</div> D <sub>I</sub>								
SHELL SIZE	R	S MAX.	Ø M	V±.005  CLASSES F,W T,Z & G	F	W	U MAX	T±.010
9	.657	1.140	1.062	.815	.094/.098	.532	.248/.254	.200
11	.766	1.245	1.150	.815	.094/.098	.601	.248/.254	.310
13	.859	1.350	1.250	.815	.094/.098	.703	.248/.254	.360
15	.938	1.420	1.375	.815	.094/.098	.791	.248/.254	.420
17	1.016	1.500	1.500	.815	.094/.098	.875	.248/.254	.480
19	1.110	1.600	1.625	.815	.094/.098	.975	.248/.254	.530
21	1.206	1.700	1.750	.815	.116/.126	1.053	.248/.254	.600
23	1.312	1.890	1.875	.815	.116/.126	1.195	.248/.254	.650
25	1.438	2.000	2.000	.815	.116/.126	1.233	.248/.254	.680

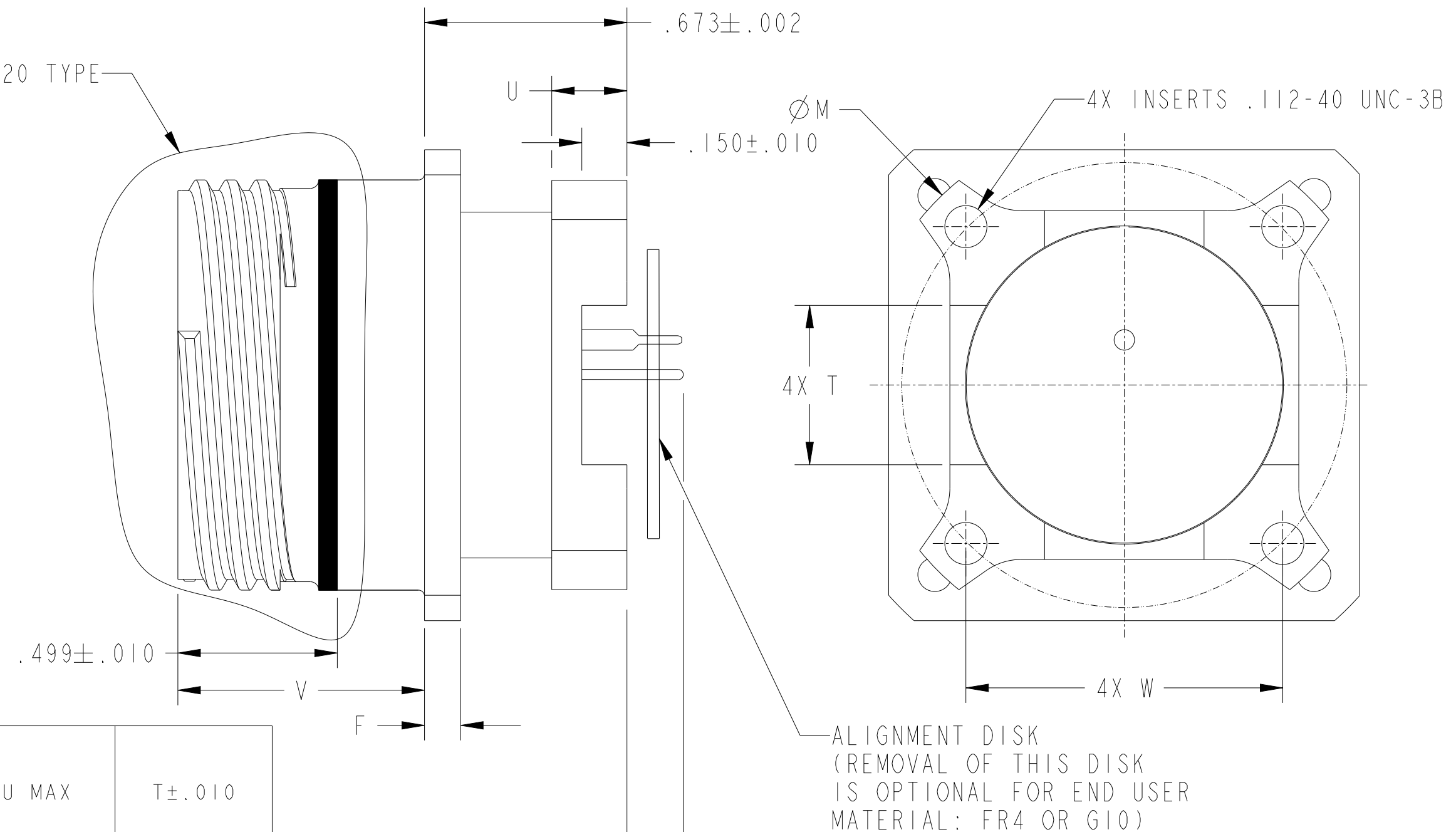
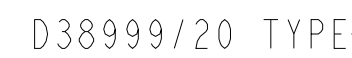


TABLE 8 CONTACT EXTENSION LENGTH

PART NUMBER	FROM REAR OF DOUBLE FLANGE ±.025
D3DxxxxxxxxExx	.066
D3DxxxxxxxxFxx	.117
D3DxxxxxxxxGxx	.182
D3DxxxxxxxxHxx	.222

MOUNTING STYLE D (1.10, PAGE 1)  
NOT AVAILABLE IN CLASSES J OR M (COMPOSITE)  
ONLY SECTION 1.4 (PAGE 1) REAR CONFIGURATION  
AVAILABLE ARE 1 AND 4.



4. FOR APPLICABLE KEYING DIAGRAM, SEE MIL-DTL-38999, FOR INSERT ARRANGEMENTS, SEE MIL-STD-1560. CONSULT FACTORY FOR AVAILABILITY.

3. GENERAL SPECIFICATIONS: THIS CONNECTOR IS INTERMATEABLE WITH MIL-DTL-38999 SERIES III, AND IS DESIGNED USING SIMILAR MATERIALS AND PROCESSES AS OUR QUALIFIED 38999 PRODUCTS. (E4)

2. MATERIAL / FINISH: SHELL - ALUMINUM ALLOY, PLATING PER PART NUMBER EXAMPLE.  
CONTACTS - COPPER ALLOY, GOLD  
RESILIENT INSERTS - SILICONE ELASTOMER  
PLASTIC INSERTS - THERMOPLASTIC

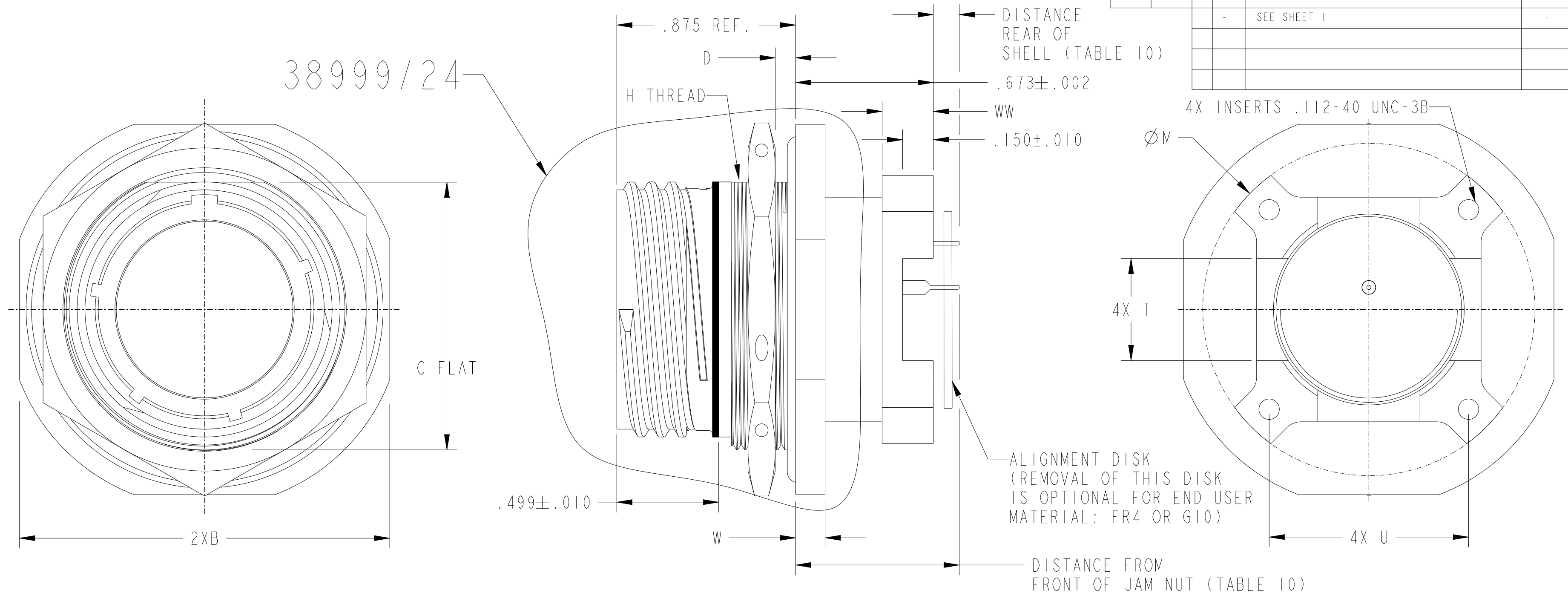
1. ALL DIMENSIONS ARE IN INCHES UNLESS OTHERWISE SPECIFIED.

NOTES: UNLESS OTHERWISE SPECIFIED.

THIS DRAWING IS A CONTROLLED DOCUMENT.		DWN EHAB ALAWNEH CHK CRAIG BROWN APVD ALEX RENGIFO		150323 150323 160614		 TE Connectivity		
DIMENSIONS: INCHES 		TOLERANCES UNLESS OTHERWISE SPECIFIED: 0 PLC ±.1 1 PLC ±.01 2 PLC ±.01 3 PLC ±.005 4 PLC ±.0005 ANGLES ±.5° FINISH		NAME PCB RECEPTACLES D38999 TYPE				
MATERIAL PER CLASS		WEIGHT -		SIZE A2		CAGE CODE 11139	DRAWING NO C-D3XXXXXXXXXXXXX	RESTRICTED TO -
CUSTOMER DRAWING				SCALE 1 000		SHEET 5 OF 8		REV F

THIS DRAWING IS UNPUBLISHED.	RELEASED FOR PUBLICATION	150323
© COPYRIGHT 150323 BY -TYCO ELECTRONICS ALL RIGHTS RESERVED.		

LOC	DIST	REVISIONS					
		P	LTR	DESCRIPTION	DATE	DWN	APVD
-	-		-	SEE SHEET 1	-	-	-



SHELL SIZE	H THREAD	B±.015	C FLAT ±.005	D PANEL THICKNESS	ØM	W CLASSES F, W, T, Z & G	W CLASSES J & M	WW MAX	U	T±.010
09	M17x1.0-6g 0.100R	1.063	.651	.062/.126	1.062	.110/.115	.104/.109	.248/.254	.532	.200
11	M20x1.0-6g 0.100R	1.252	.751	.062/.126	1.150	.110/.115	.104/.109	.248/.254	.601	.310
13	M25x1.0-6g 0.100R	1.374	.938	.062/.126	1.250	.110/.115	.104/.109	.248/.254	.703	.360
15	M28x1.0-6g 0.100R	1.500	1.062	.062/.126	1.375	.110/.115	.104/.109	.248/.254	.791	.420
17	M32x1.0-6g 0.100R	1.626	1.187	.062/.126	1.500	.110/.115	.104/.109	.248/.254	.875	.480
19	M35x1.0-6g 0.100R	1.811	1.312	.062/.138	1.625	.141/.146	.114/.119	.248/.254	.975	.530
21	M38x1.0-6g 0.100R	1.937	1.437	.062/.138	1.750	.141/.146	.114/.119	.248/.254	1.053	.600
23	M41x1.0-6g 0.100R	2.063	1.562	.062/.138	1.875	.141/.146	.114/.119	.248/.254	1.195	.650
25	M44x1.0-6g 0.100R	2.189	1.687	.062/.138	2.000	.141/.146	.114/.119	.248/.254	1.233	.680

TABLE 9

4. FOR APPLICABLE KEYING DIAGRAM, SEE MIL-DTL-38999. FOR INSERT ARRANGEMENTS, SEE MIL-STD-1560. CONSULT FACTORY FOR AVAILABILITY.

3. GENERAL SPECIFICATIONS: THIS CONNECTOR IS INTERMATEABLE WITH MIL-DTL-38999 SERIES III, AND IS DESIGNED USING SIMILAR MATERIALS AND PROCESSES AS OUR QUALIFIED 38999 PRODUCTS. (E5)

2. MATERIAL / FINISH: SHELL - ALUMINUM ALLOY, PLATING PER PART NUMBER EXAMPLE.  
CONTACTS - COPPER ALLOY, GOLD  
RESILIENT INSERTS - SILICONE ELASTOMER  
PLASTIC INSERTS - THERMOPLASTIC

1. ALL DIMENSIONS ARE IN INCHES UNLESS OTHERWISE SPECIFIED. THREAD CALLOUT IS METRIC.


NOTES: UNLESS OTHERWISE SPECIFIED.

MOUNTING STYLE F (1.10, PAGE 1)  
NOT AVAILABLE IN CLASSES J OR M (COMPOSITE)  
ONLY SECTION 1.4 (PAGE 1) REAR CONFIGURATION  
AVAILABLE ARE 1 AND 4.

TABLE 10 CONTACT EXTENSION LENGTH

PART NUMBER	DISTANCE REAR OF SHELL ±.025	DISTANCE FROM FRONT OF JAM NUT FLANGE ±.025
D3FxxxxxxxxFxx	.062	.735
D3FxxxxxxxxGxx	.127	.800
D3FxxxxxxxxHxx	.167	.840

MC: 63,64	FINISH:
DESCRIPTION:	
MOUNTING TYPE F CONFIGURATION I & 4 CLASSES:F, W, T, Z, & G	
CAGE CODE: 11139	

THIS DRAWING IS A CONTROL DOCUMENT.		DWN EHAB ALAWNEH 150323		TE Connectivity	
DIMENSIONS: INCHES		CHK CRAIG BROWN 150323		NAME PCB RECEPTACLES D38999 TYPE	
TOLERANCES UNLESS OTHERWISE SPECIFIED:		APVD ALEX RENGIFO 160614			
		PRODUCT SPEC -			
		APPLICATION SPEC -			
MATERIAL		WEIGHT -		SIZE A2	CAGE CODE 11139
FINISH PER CLASS		DRAWING NO C-D3XXXXXXXXXXXX		RESTRICTED TO -	
CUSTOMER DRAWING		SCALE 1:100		SHEET 6 OF 8	
				REV F	

THIS DRAWING IS UNPUBLISHED.	RELEASED FOR PUBLICATION	150323
© COPYRIGHT 150323 BY -TYCO ELECTRONICS ALL RIGHTS RESERVED.		

LOC	DIST	REVISIONS					
		P	LTR	DESCRIPTION	DATE	DWN	APVD
N 1 ) E 1 ,			-	SEE SHEET 1	-	-	-

ONLY EPOXY SEAL WITH NO GROMMET (OPTION 1)  
AVAILABLE FOR REAR CONFIGURATION, PAGE 1,  
SECTION 1.4

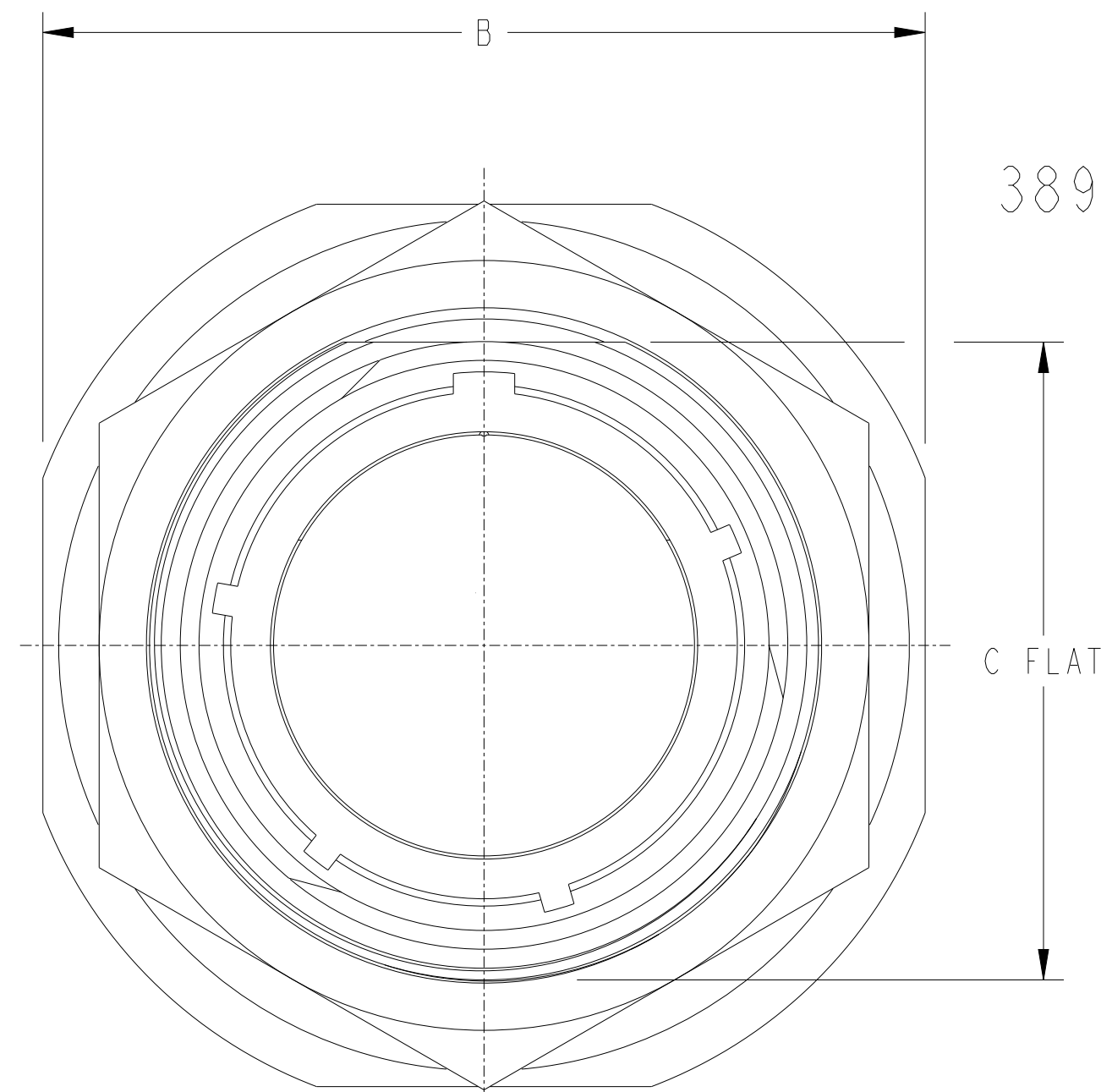


TABLE II

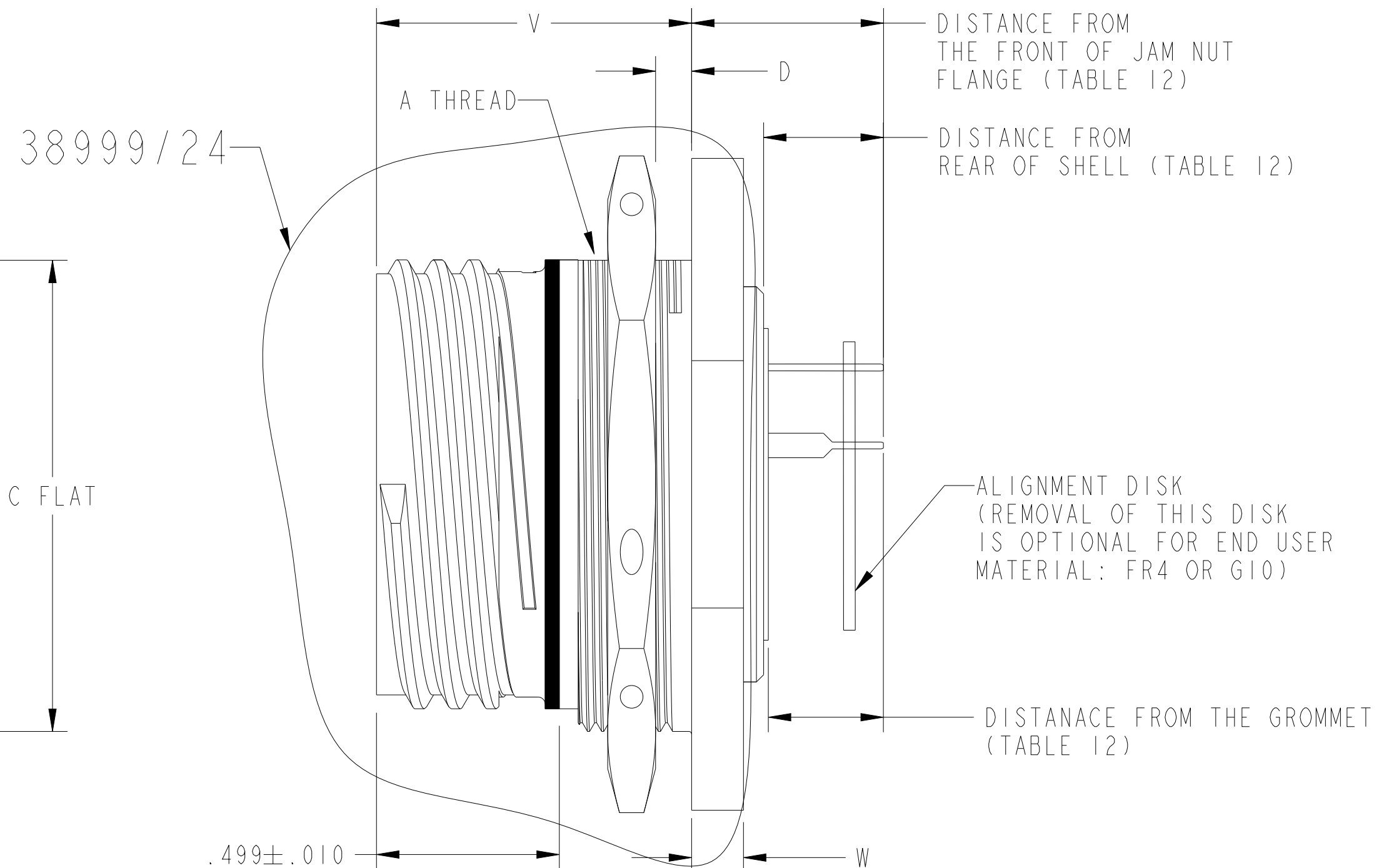


TABLE 12 CONTACT EXTENSION LENGTH

SHELL SIZE	A THREAD	B±.015	C FLAT ±.005	D PANEL THICKNESS	W	W	V	V
					CLASSES F,W, T, Z & G	CLASSES J & M	CLASSES F,W, T, Z & G	CLASSES J & M
09	M17x1.0-6g 0.100R	1.063	.651	.062/.126	.110/.115	.104/.109	.872/.878	.864/.670
11	M20x1.0-6g 0.100R	1.252	.751	.062/.126	.110/.115	.104/.109	.872/.878	.864/.670
13	M25x1.0-6g 0.100R	1.374	.938	.062/.126	.110/.115	.104/.109	.872/.878	.864/.670
15	M28x1.0-6g 0.100R	1.500	1.062	.062/.126	.110/.115	.104/.109	.872/.878	.864/.670
17	M32x1.0-6g 0.100R	1.626	1.187	.062/.126	.110/.115	.104/.109	.872/.878	.864/.670
19	M35x1.0-6g 0.100R	1.811	1.312	.062/.138	.141/.146	.114/.119	.872/.878	.864/.670
21	M38x1.0-6g 0.100R	1.937	1.437	.062/.138	.141/.146	.114/.119	.872/.878	.864/.670
23	M41x1.0-6g 0.100R	2.063	1.562	.062/.138	.141/.146	.114/.119	.872/.878	.864/.670
25	M44x1.0-6g 0.100R	2.189	1.687	.062/.138	.141/.146	.114/.119	.872/.878	.864/.670



PART NUMBER	DISTANCE FROM FRONT OF JAM NUT FLANGE $\pm .025$		DISTANCE FROM REAR OF SHELL $\pm .025$	DISTANCE FROM GROMMET $\pm .025$
	CLASSES F, W T, Z, G	CLASSES J, M	ALL CLASSES	ALL CLASSES
D3JxxxxxxxxAxx	.533	.541	.333	.320
D3JxxxxxxxxBxx	.580	.588	.380	.367
D3JxxxxxxxxCxx	.600	.608	.400	.387
D3JxxxxxxxxDxx	.636	.644	.436	.423
D3JxxxxxxxxExx	.684	.682	.484	.471
D3JxxxxxxxxFxx	.735	.743	.535	.522
D3JxxxxxxxxGxx	.800	.808	.600	.587
D3JxxxxxxxxHxx	.840	.848	.640	.627
D3JxxxxxxxxJxx	.340	.348	.140	.127
D3JxxxxxxxxNxx	.450	.458	.250	.237

3. FOR APPLICABLE KEYING DIAGRAM, SEE MIL-DTL-38999, FOR INSERT ARRANGEMENTS. SEE MIL-STD-1560. CONSULT FACTORY FOR AVAILABILITY.

2. GENERAL SPECIFICATIONS: THIS CONNECTOR IS INTERMATEABLE WITH MIL-DTL-38999 SERIES III, AND IS DESIGNED USING SIMILAR MATERIALS AND PROCESSES AS OUR QUALIFIED 38999 PRODUCTS.

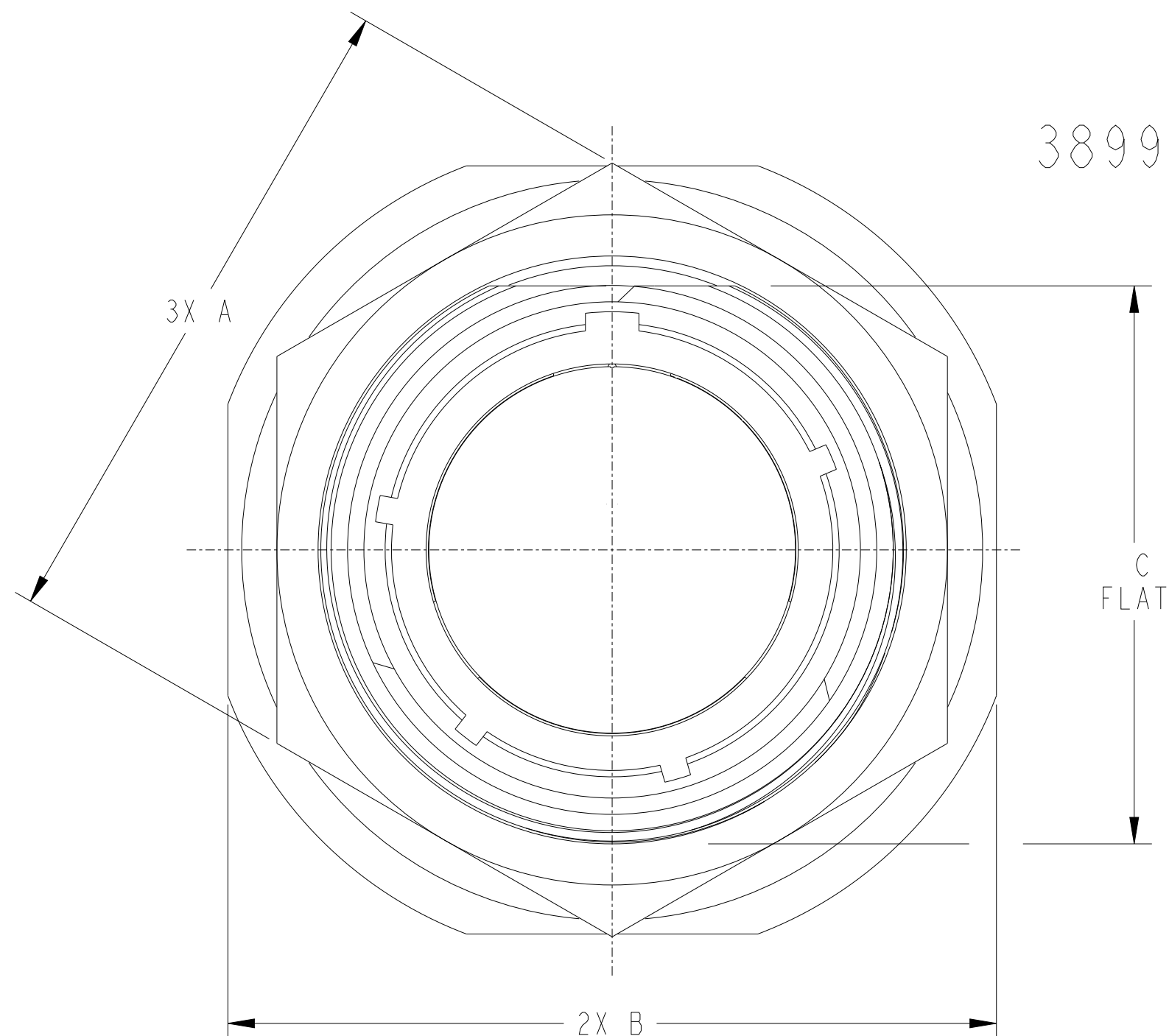
1. ALL DIMENSIONS ARE IN INCHES UNLESS OTHERWISE SPECIFIED.

NOTES: UNLESS OTHERWISE SPECIFIED.

MC: 63,64		FINISH:		THIS DRAWING IS A CONTROLLED DOCUMENT.		DWN F HAB ALAWNEH CHK CRAIG BROWN		150323 150323		 TE Connectivity											
DESCRIPTION:  MOUNTING TYPE J CONFIGURATION I & 4 CLASSES: J, M, F, W, T, Z, & G				DIMENSIONS: INCHES		  0 PLC ±.1 1 PLC ±.01 2 PLC ±.005 3 PLC ±.0005 4 PLC ±.0005 ANGLES ±.5°		APVD ALEX RENGIFO		160614		NAME  PCB RECEPTACLES D38999 TYPE									
				PRODUCT SPEC				-													
				APPLICATION SPEC				-													
				MATERIAL				FINISH													
CAGE CODE: 11139				PER CLASS		-		WEIGHT		-		SIZE A2		CAGE CODE 11139		DRAWING NO C-D3XXXXXXXXXXXX		RESTRICTED TO -			
										CUSTOMER DRAWING				SCALE 1.000		SHEET 7		OF 8		REV F	



LOC	DIST	REVISIONS					
		P	LTR	DESCRIPTION	DATE	DWN	APVD
-	-		-	SEE SHEET I	-	-	-



MOUNTING STYLE N (1.10 SHEET 1)  
REAR COMFOGURATION 2 & 3 (1.4 SHEET 1)

TABLE 13 CONTACT EXTENSION LENGTH

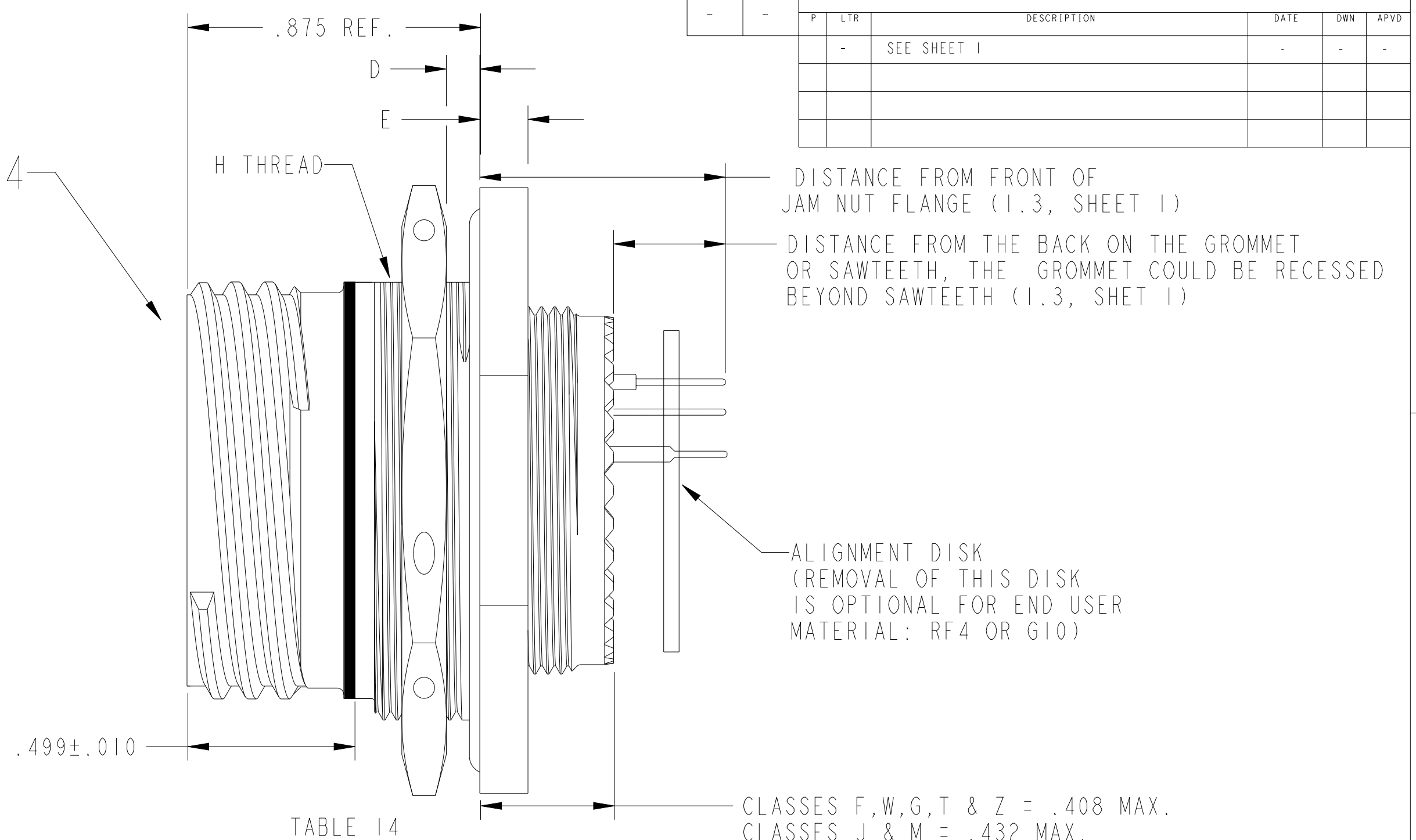
PART NUMBER	DISTANCE FROM GROMMET ±.025	DISTANCE FROM FRONT OF JAM NUT FLANGE ±.025		DISTANCE FROM REAR OF SAW TEETH ±.025	
	ALL CLASSES	CLASSES F, W T, Z, G	CLASSES J, M	CLASSES F, W T, Z, G	CLASSES J, M
D3NxxxxxxxxAxx	.163	.533	.536	.132	.110
D3NxxxxxxxxBxx	.210	.580	.586	.179	.157
D3NxxxxxxxxCxx	.230	.600	.603	.199	.177
D3NxxxxxxxxDxx	.266	.632	.639	.235	.213
D3NxxxxxxxxExx	.314	.684	.687	.283	.261
D3NxxxxxxxxFxx	.365	.735	.738	.334	.312
D3NxxxxxxxxGxx	.430	.800	.803	.400	.377
D3NxxxxxxxxHxx	.470	.840	.840	.440	.420

3. FOR APPLICABLE KEYING DIAGRAM, SEE MIL-DTL-38999. FOR INSERT ARRANGEMENTS, SEE MIL-STD-1560. CONSULT FACTORY FOR AVAILABILITY.



2. GENERAL SPECIFICATIONS: THIS CONNECTOR IS INTERMATEABLE WITH MIL-DTL-38999 SERIES III, AND IS DESIGNED USING SIMILAR MATERIALS AND PROCESSES AS OUR QUALIFIED 38999 PRODUCTS.

1. ALL DIMENSIONS ARE IN INCHES UNLESS OTHERWISE SPECIFIED.  
THREAD CALLOUT IS METRIC.

NOTES: UNLESS OTHERWISE SPECIFIED.



SHELL SIZE	H THREAD	A	B±.015	C FLAT ±.005	D PANEL THICKNESS	E CLASSES F, W T, Z, G	E CLASSES J, M
09	M17x1.0-6g 0.100R	0.905 0.859	1.063	.651	.062/.126	.110/.115	.104/.109
11	M20x1.0-6g 0.100R	1.023 0.984	1.252	.751	.062/.126	.110/.115	.104/.109
13	M25x1.0-6g 0.100R	1.220 1.172	1.374	.938	.062/.126	.110/.115	.104/.109
15	M28x1.0-6g 0.100R	1.338 1.296	1.500	1.062	.062/.126	.110/.115	.104/.109
17	M32x1.0-6g 0.100R	1.456 1.422	1.626	1.187	.062/.126	.110/.115	.104/.109
19	M35x1.0-6g 0.100R	1.614 1.546	1.811	1.312	.062/.138	.141/.146	.114/.119
21	M38x1.0-6g 0.100R	1.811 1.672	1.937	1.437	.062/.138	.141/.146	.114/.119
23	M41x1.0-6g 0.100R	1.850 1.796	2.063	1.562	.062/.138	.141/.146	.114/.119
25	M44x1.0-6g 0.100R	2.017 1.939	2.189	1.687	.062/.138	.141/.146	.114/.119

MC: 63,64	FINISH:	THIS DRAWING IS A CONTROLLED DOCUMENT.		<div> <div> DWN 150323  CHK E HAB ALAWNEH  CRAIG BROWN 150323  APVD ALEX RENGIFO 160614 </div> <div>  TE Connectivity </div> </div>	
DESCRIPTION:  MOUNTING TYPE N CONFIGURATION 2 & 3 CLASSES: J, M, F, W, T, Z, & G		DIMENSIONS: INCHES	TOLERANCES UNLESS OTHERWISE SPECIFIED:	NAME PCB RECEPTACLES D38999 TYPE	
			0 PLC ±- 1 PLC ±.1 2 PLC ±.01 3 PLC ±.005 4 PLC ±.0005 ANGLES ±.5° FINISH	PRODUCT SPEC - APPLICATION SPEC - WEIGHT -	
			MATERIAL	SIZE CAGE CODE DRAWING NO RESTRICTED TO A2 11139 C-D3XXXXXXXXXXXXX -	
CAGE CODE: 11139		PER CLASS		CUSTOMER DRAWING SCALE 1:100 SHEET 8 OF 8 REV E	