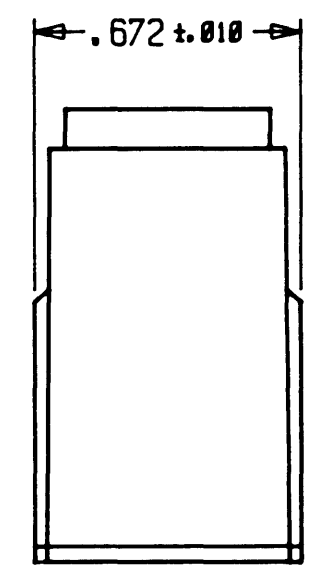
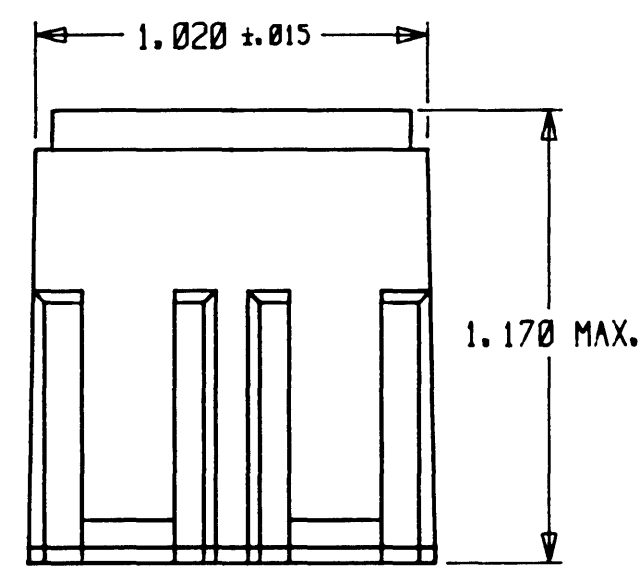
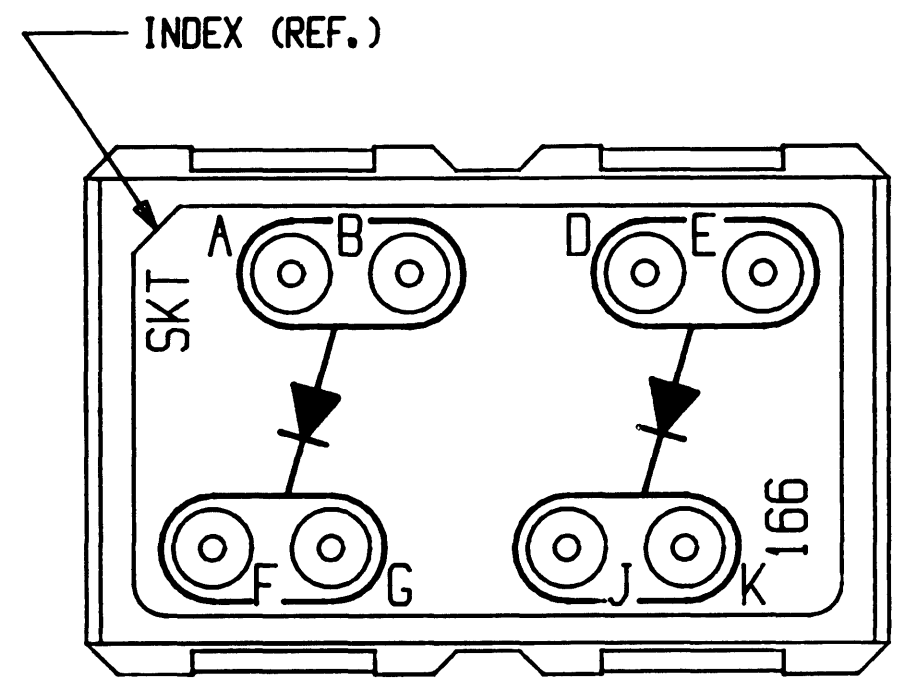


N/C CTJ420E166

REVISIONS			
SYM	DESCRIPTION	DATE	APPROVED
N/C	NEW RELEASE PER E.O. A6227	1/27/87	J.C.



11. COMPONENT: MR756, QTY. 2.
10. THIS ASSEMBLY CONFORMS TO AFLC 8027520-4 SPEC.
9. SOCKET CONTACTS MEET MIL-C-39029/22-192 REQUIREMENT.
8. JUNCTION ELECTRONIC COMPONENT TEMPERATURE RANGE: -67°F TO +257°F (-55°C TO +125°C).
7. MATERIALS AND FINISHES:
HOUSING - THERMO PLASTIC
GROMMET - SILICONE ELASTOMER
PIN CONTACTS - COPPER ALLOY PLATED GOLD
6. CONTACT TOOL NO. M15570-20 IS REQUIRED.
5. SEE ENVELOPE DRAWING NO. CTJ-3*-** FOR SUITABLE RAIL ASSEMBLIES.
4. FOR CONTACT DATA SEE ENVELOPE DRAWING 1625-1-0000.

3. CTJ420EXXX-***
 ———— MODIFICATION
 ———— CIRCUIT ARRANGEMENT
 ———— BASIC IDENTIFIER

NOTE:

2. THE CIRCUIT IDENTIFICATION WILL BE SCREENED ON JUNCTION.
1. DIMENSIONS ARE IN INCHES UNLESS OTHERWISE SPECIFIED.

TOLERANCES UNLESS OTHERWISE SPECIFIED DECIMALS XXX : 005 ANGLES : 0° 30' 0" TIR 010 PARTS TO BE FREE OF BURRS AND SHARP EDGES	SIGNATURE & DATE	
	DR	Henry Chan 1-27-87
MATERIAL	CHK	A. J. [Signature] 1/27/87
	PE	J. Abelle 1-27-87
FINISH	APPD	[Signature] 1-27-87
	SCALE	NONE WT

JUNCTION ASSEMBLY
 ELECTRONIC COMPONENT
 SIZE 12
 SIZE 20 CONTACTS
 166 ARRANGEMENT
 ENVELOPE

CP	MATL CODE	16
DEUTSCH ENGINEERED CONNECTING DEVICES Municipal Airport Banning, California		
B	CTJ420E166	
DWG SIZE	CODE 11139	SHEET 1 OF 1