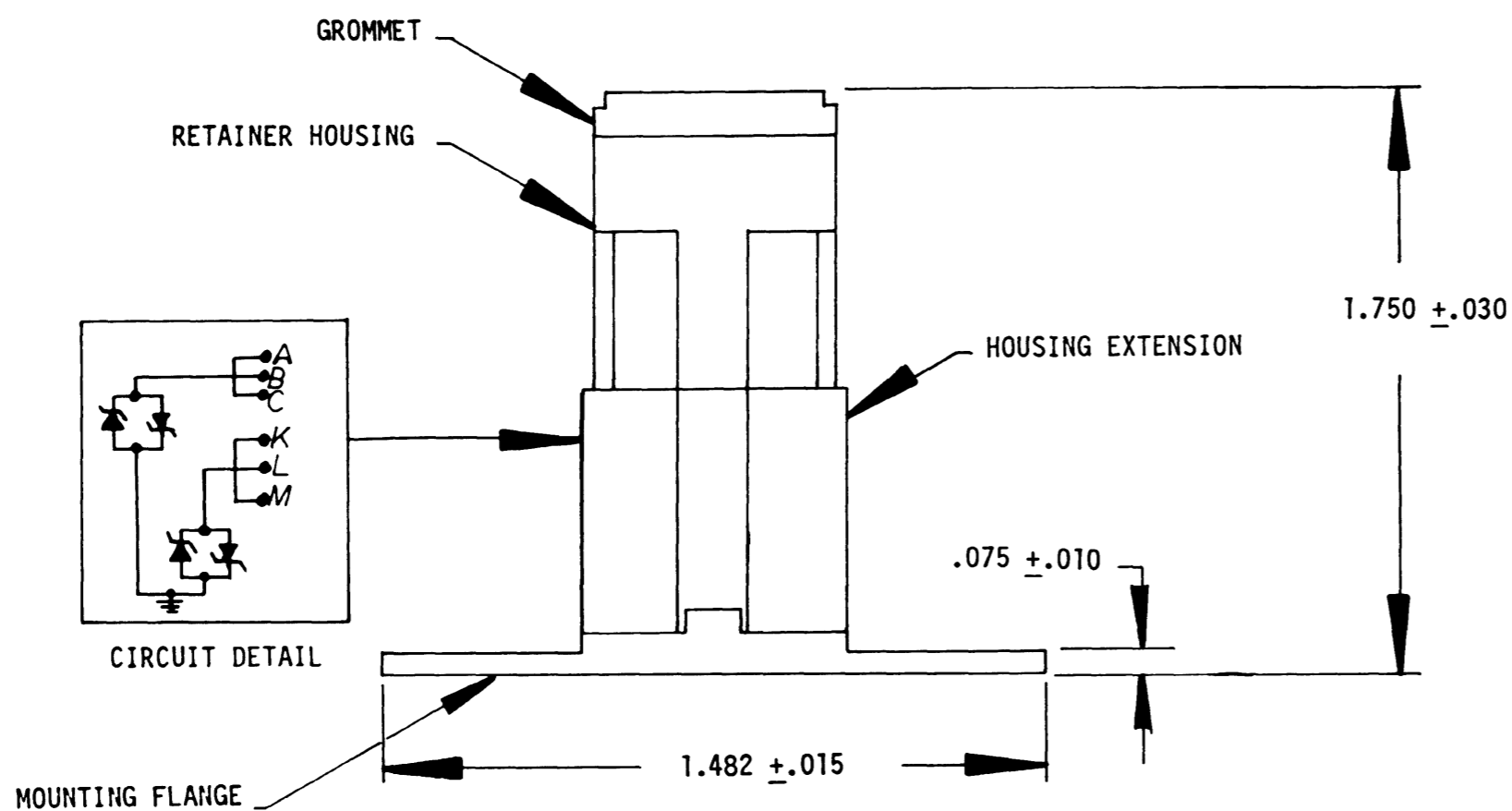
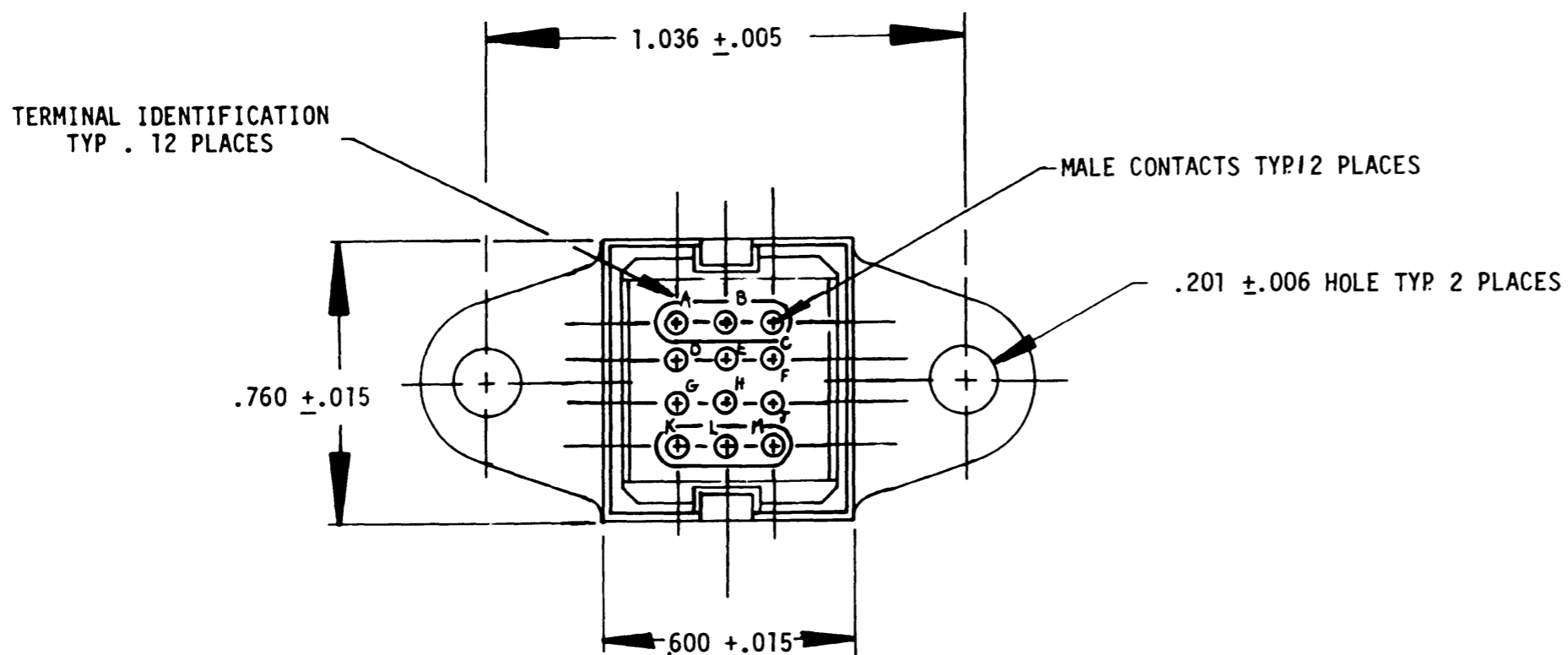


REVISIONS			
SYM	DESCRIPTION	DATE	APPROVED
N/C	NEW RELEASE PER E.O. A0931	5-29-84	<i>B. Umie 6/15/84</i>



REV	CTE220-10-102
N/C	

9. COMPONENTS: (4) DIODES, LC30A.
8. THIS ASSEMBLY CONFORMS TO AFLC 8027520 SPEC.
7. JUNCTION ELECTRONIC COMPONENT TEMPERATURE RANGE: -67 F TO 257F (-55 C TO 125C).
5. MATERIALS AND FINISHES:
  - HOUSING - THERMO PLASTIC
  - GROMMET - SILICONE ELASTOMER
  - PIN CONTACTS - COPPER ALLOY PLATED GOLD
  - FLANGE MOUNT - COPPER ALLOY PLATED TIN
5. CONTACT TOOL NO. M15570-20 IS REQUIRED.
4. FOR CONTACT DATA SEE ENVELOPE DRAWING 1625-1-0000.
3. THE CIRCUIT IDENTIFICATION WILL BE SCREENED ON JUNCTIONS.
2. CTE 2 20 - 10 - 102 - \*\*\*
  - CONTACT SIZE
  - FLANGE MOUNT
  - BASIC IDENTIFIER
  - MOUNTING HOLE SIZE
  - ARRANGEMENT
  - MODIFICATIONS (IF ANY)
1. DIMENSIONS ARE IN INCHES UNLESS OTHERWISE SPECIFIED.

SIGNATURE & DATE	
DR	<i>Dean Salazar 5-17-84</i>
CHK	<i>B. Umie 6/15/84</i>
PE	<i>B. Umie 5-29-84</i>
APPD	
SCALE	NONE
WT	

MODULE ASSEMBLY  
TRANSIENT SUPPRESSION  
NETWORK, GROUNDING  
12 SIZE 20 CONTACTS

ENVELOPE

CP	MATL CODE
<b>The Deutsch Company</b> ELECTRONIC COMPONENTS DIVISION Municipal Airport Banning, California	
C	CTE220-10-102
DWG SIZE	CODE 11139 SHEET / OF /

E

D

C

B

A