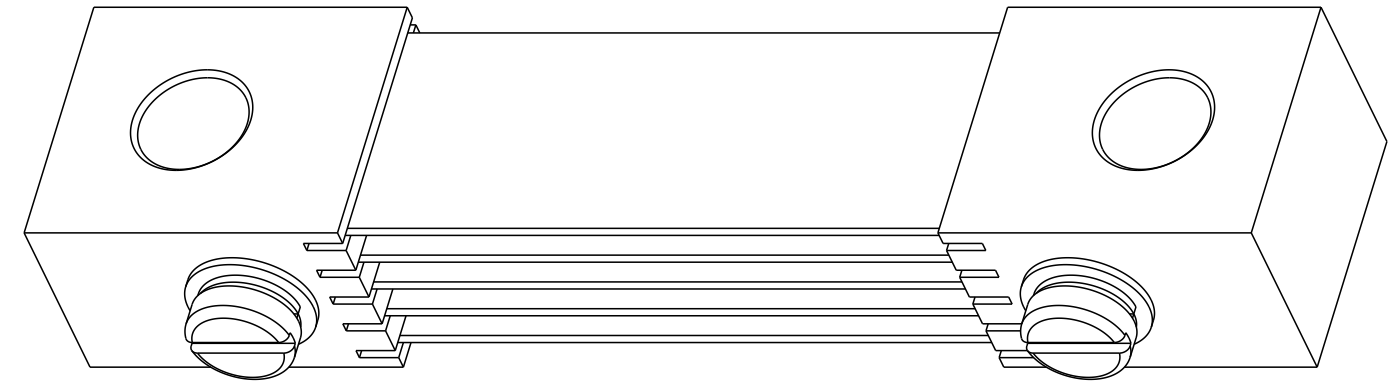
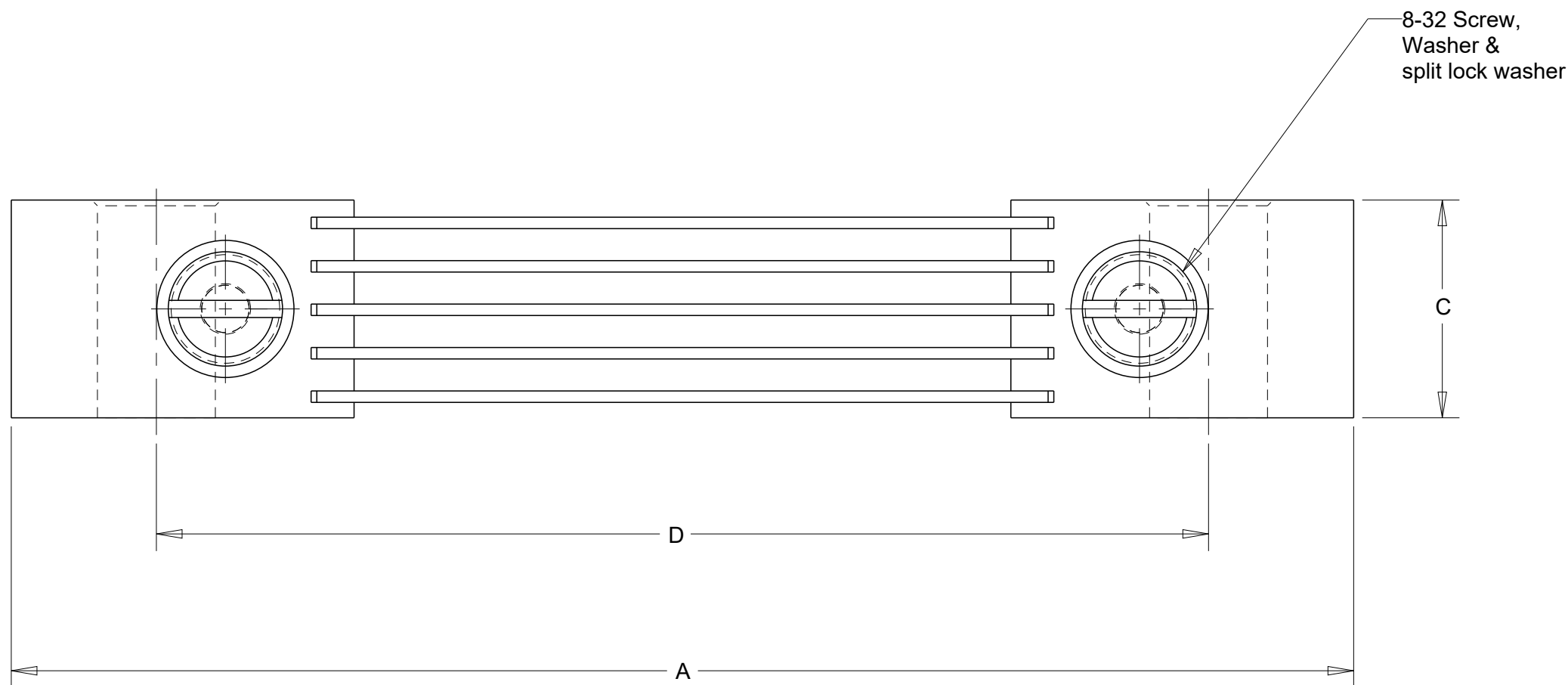
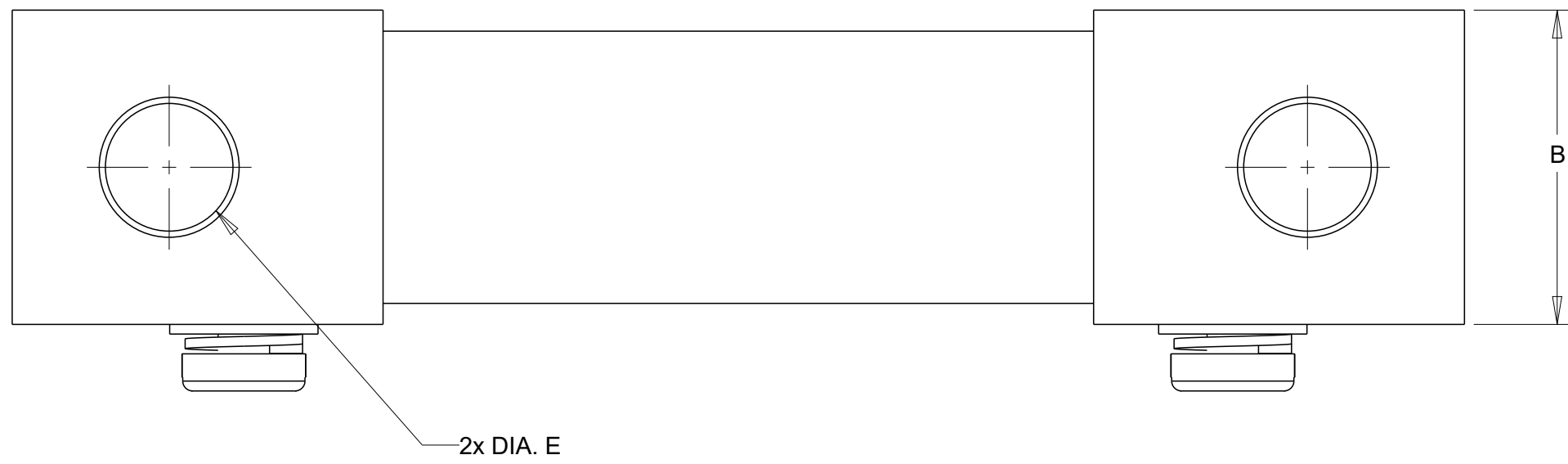


REVISIONS				
P	LTR	DESCRIPTION	DATE	APVD
1		NEW LAYOUT	29MAY2020	SM NJ



50mV				DIMENSIONS (mm)				
RATED CURRENT-OUT (mV)	RATED CURRENT (A)	OPERATING CURRENT (A)	RESISTANCE (mW)	A	B	C	D	E
FH-15-50	15	10	3.333	104.78	15.88	9.53	84.14	8.73
FH-20-50	20	13.4	2.5	104.78	15.88	9.53	84.14	8.73
FH-50-50	50	33.4	1	104.78	15.88	9.53	84.14	8.73
FH-75-50	75	50	0.667	104.78	15.88	9.53	84.14	8.73
FH-100-50	100	66.7	0.5	104.78	19.05	9.53	84.14	8.73
FH-125-50	125	83.4	0.4	104.78	25.4	9.53	84.14	8.73
FH-150-50	150	100	0.333	104.78	25.4	9.53	84.14	8.73
FH-175-50	175	116.7	0.286	104.78	19.05	12.7	84.14	8.73
FH-200-50	200	133.4	0.25	104.78	25.4	12.7	84.14	8.73
FH-250-50	250	166.7	0.2	104.78	25.4	12.7	84.14	8.73
FH-300-50	300	200	0.167	104.78	31.75	12.7	84.14	8.73
FH-375-50	375	250	0.133	117.48	25.4	19.05	84.14	8.73
FH-400-50	400	266.7	0.125	117.48	25.4	19.05	92.08	10.32
FH-500-50	500	333.4	0.1	117.48	31.75	19.05	92.08	10.32
FH-600-50	600	400	0.083	117.48	38.1	19.05	92.08	10.32

THIS DRAWING IS A CONTROLLED DOCUMENT.

DWN SATYA.M 18JUN2020  
 CHK NIGEL JOHNSON 18JUN2020  
 APVD NIGEL JOHNSON 18JUN2020

**STE** TE Connectivity

NAME: ANSI SHUNT FH RANGE DIMENSION DRAWING

PRODUCT SPEC: -  
 APPLICATION SPEC: -  
 WEIGHT: -

MATERIAL: -


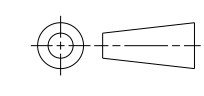
TOLERANCES UNLESS OTHERWISE SPECIFIED:  
 0 PLC ±  
 1 PLC ±  
 2 PLC ±  
 3 PLC ±  
 4 PLC ±  
 ANGLES ±  
 FINISH -

SIZE: A2 CAGE CODE: 00779 DRAWING NO: CI-3L57401 RESTRICTED TO: -  
 SCALE: 2:1 SHEET 1 OF 2 REV 1

CUSTOMER DRAWING

REVISIONS				
P	LTR	DESCRIPTION	DATE	APVD
-		SEE SHEET 1	-	-

RATED CURRENT - OUT (mV)	RATED CURRENT (A)	OPERATING CURRENT (A)	RESISTANCE (mW)	DIMENSIONS (mm)				
				A	B	C	D	E
FH-50-100	50	33.4	2	146.05	15.88	9.53	125.41	8.73
FH-75-100	75	50	1.333	146.05	15.88	9.53	125.41	8.73
FH-100-100	100	66.7	1	146.05	19.05	9.53	125.41	8.73
FH-150-100	150	100	0.667	146.05	25.4	9.53	125.41	8.73
FH-200-100	200	133.4	0.5	146.05	25.4	12.7	125.41	8.73
FH-250-100	250	166.7	0.4	146.05	25.4	12.7	125.41	8.73
FH-300-100	300	200	0.333	146.05	31.75	12.7	125.41	8.73
FH-375-100	375	250	0.267	158.95	25.4	19.05	134.94	10.32
FH-400-100	400	266.7	0.25	158.95	25.4	19.05	134.94	10.32

THIS DRAWING IS A CONTROLLED DOCUMENT.		DWN SATYA.M 18JUN2020	 TE Connectivity
DIMENSIONS: mm		CHK NIGEL JOHNSON 18JUN2020	
		APVD NIGEL JOHNSON 18JUN2020	
TOLERANCES UNLESS OTHERWISE SPECIFIED: 0 PLC ± 1 PLC ± 2 PLC ± 3 PLC ± 4 PLC ± ANGLES ± FINISH		PRODUCT SPEC - APPLICATION SPEC - WEIGHT -	
MATERIAL -		CUSTOMER DRAWING	NAME ANSI SHUNT FH RANGE DIMENSION DRAWING  SIZE A2 CAGE CODE 00779 DRAWING NO CI-3L57401 RESTRICTED TO - SCALE 2:1 SHEET 2 OF 2 REV 1