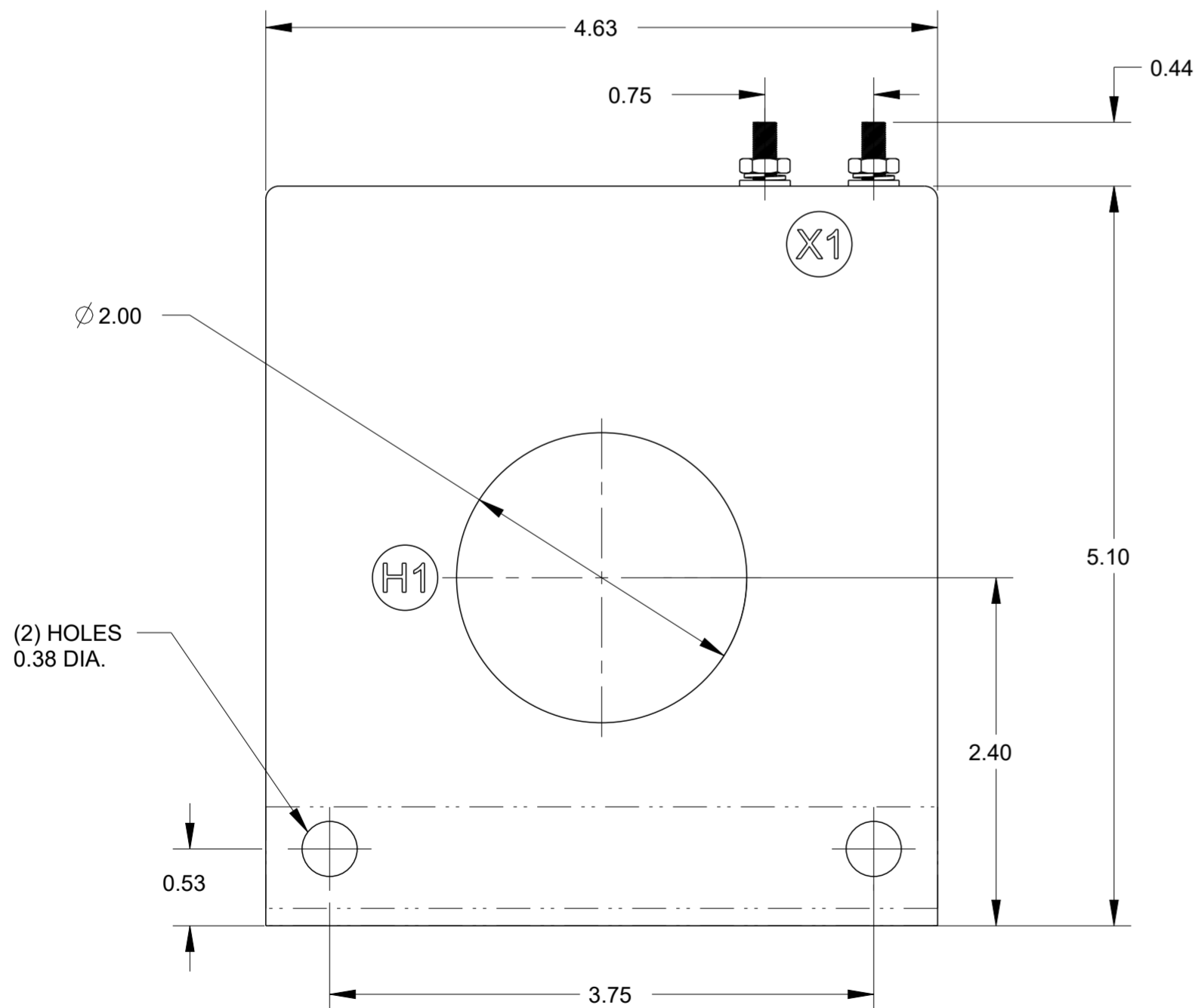
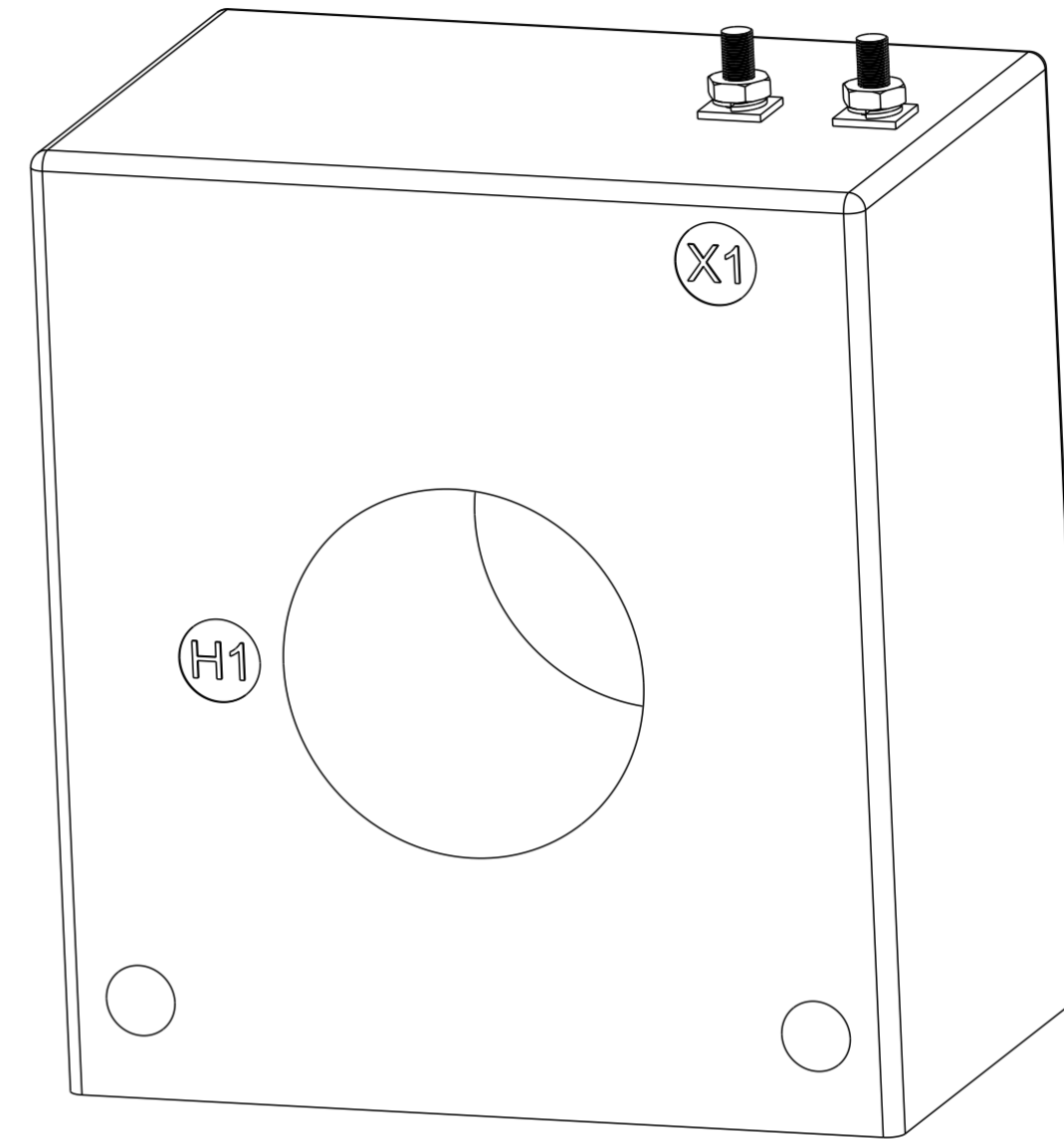
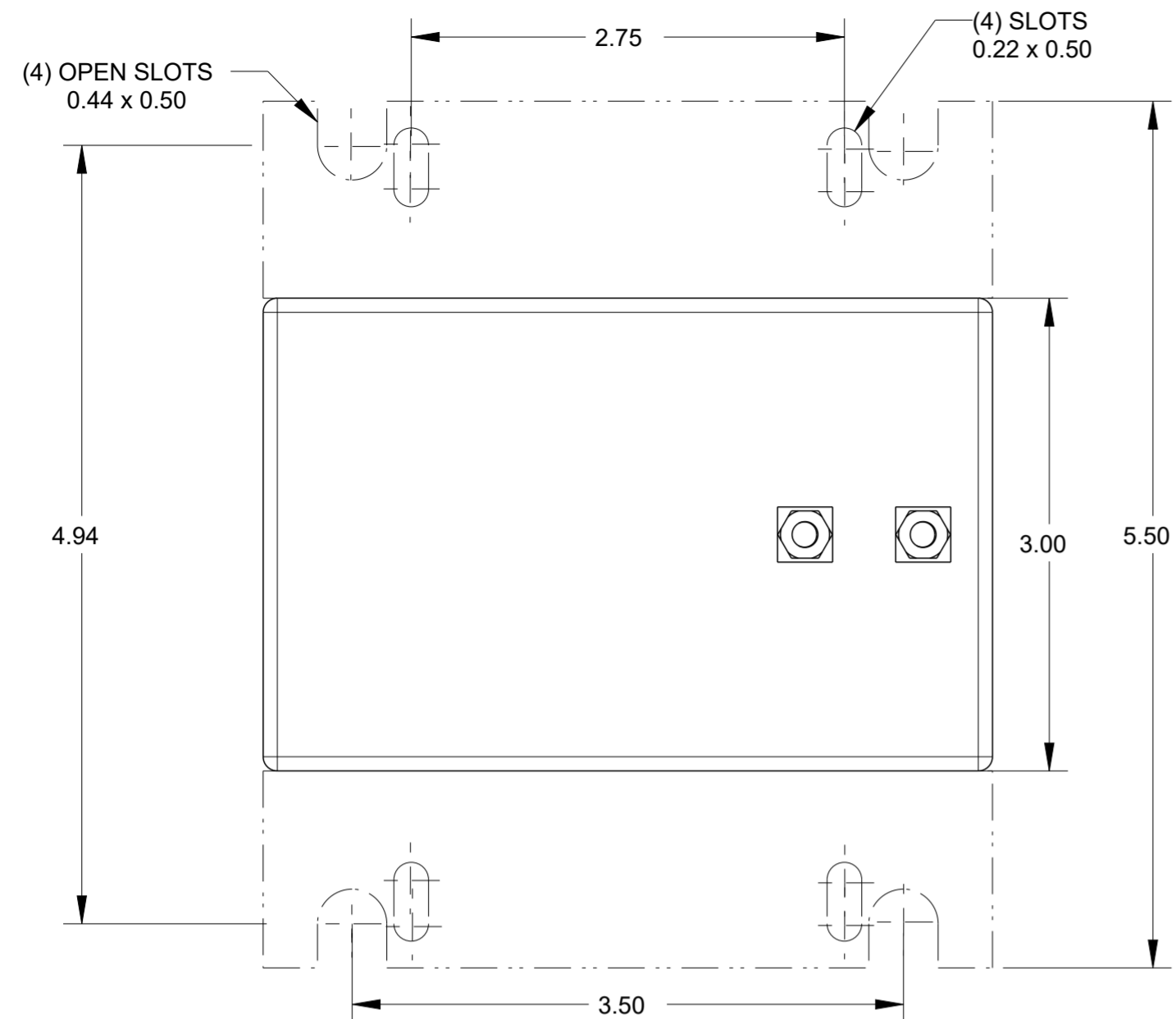


P	LTR	DESCRIPTION	DATE	DWN	APVD
1		ORIGINAL ISSUE	19JUL2020	SM	NJ

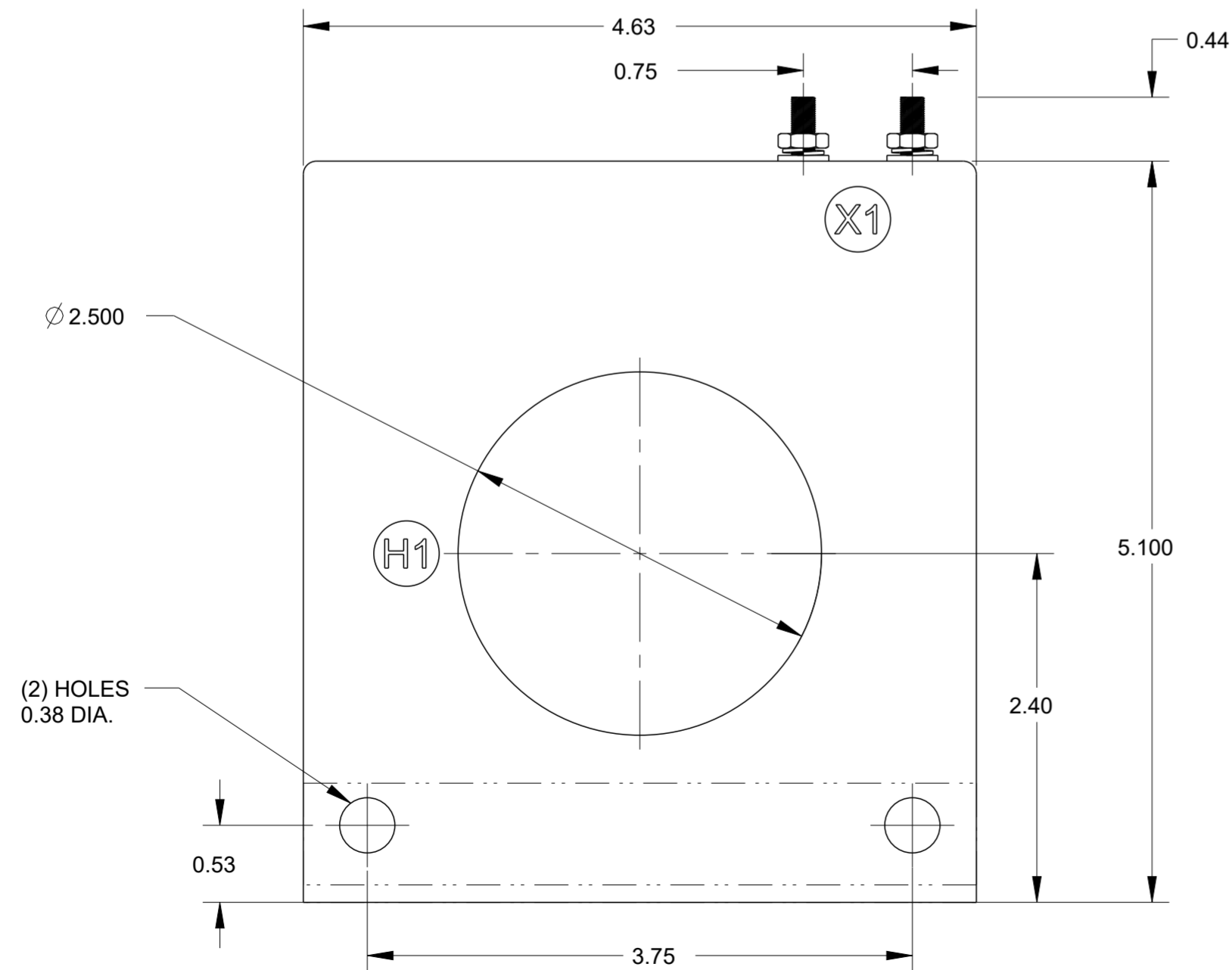
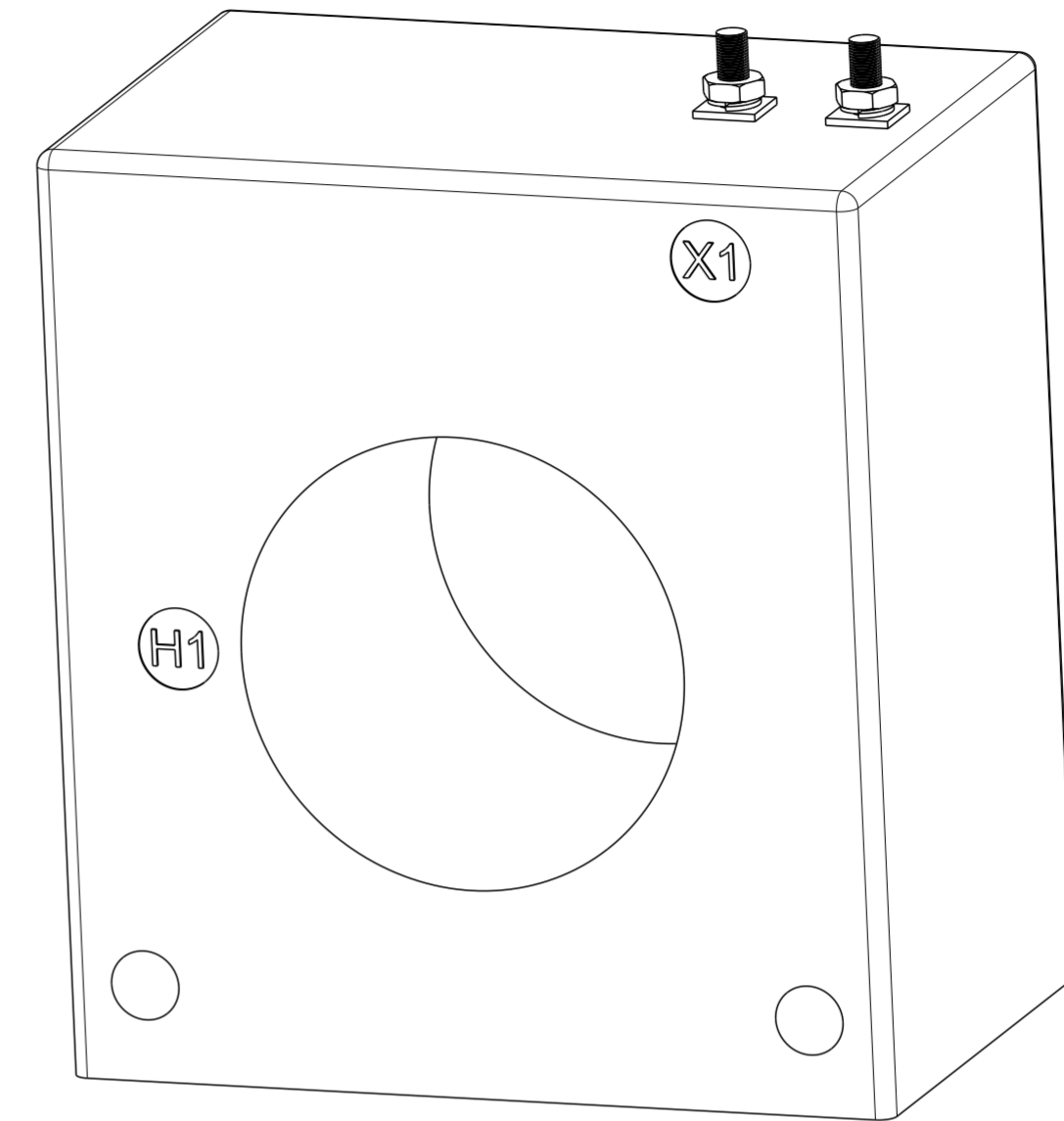
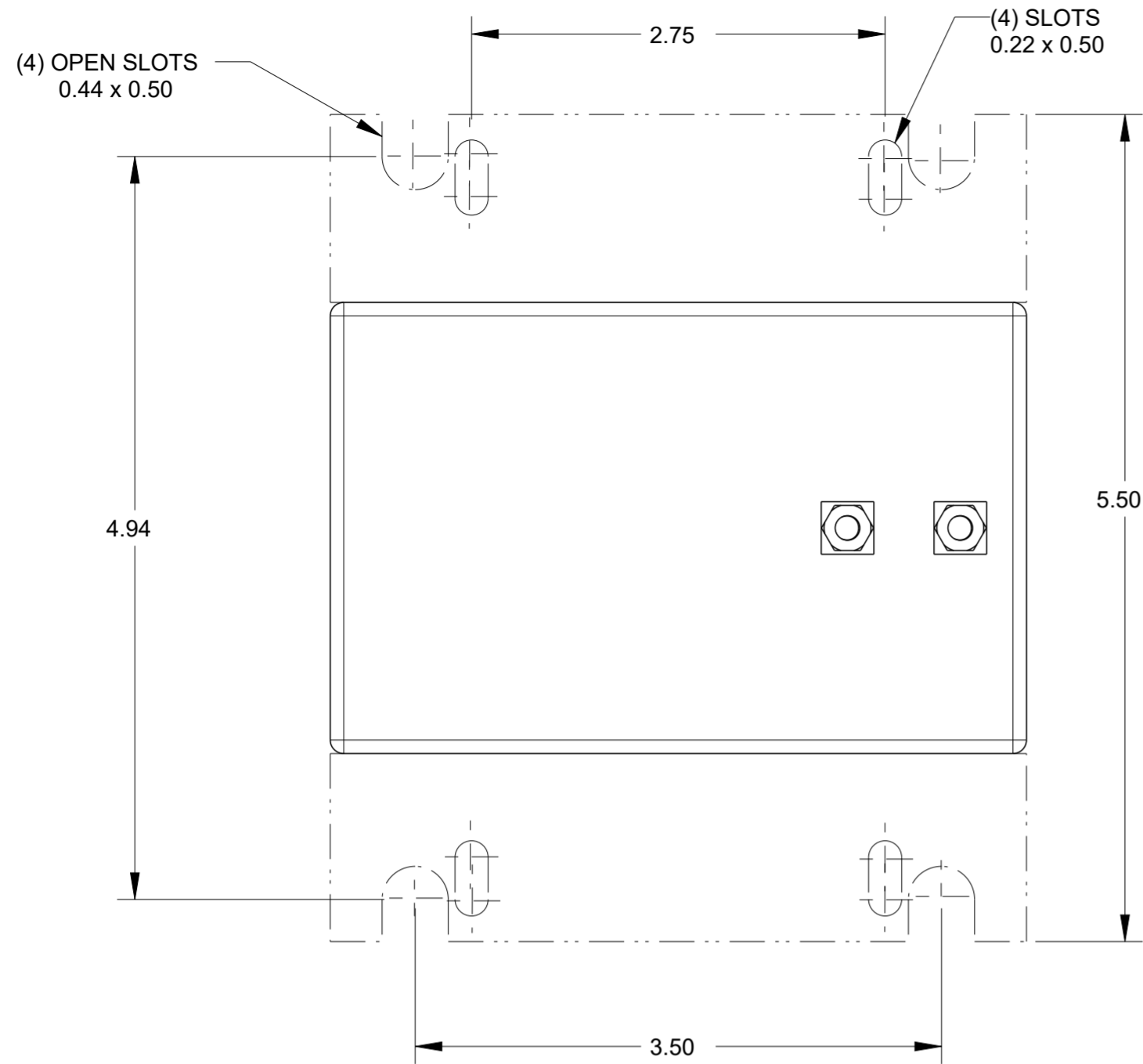


CATALOGUE NUMBER	CURRENT RATIO	RELAY CLASS	ANSI METERING CLASS AT 60 Hz					SECONDARY WINDING RESISTANCE (OHMS @ 75° C)	CONTINUOUS THERMAL RATING FACTOR	
			B0.1	B0.2	B0.5	B0.9	B1.8		@30° C	@55° C
23-101	100:5	-	0.6	0.6	2.4	4.8	-	0.051	2.0	2.0
23-151	150:5	C10	0.6	0.6	0.6	1.2	2.4	0.076	2.0	2.0
23-201	200:5	C10	0.3	0.6	0.6	1.2	2.4	0.114	2.0	1.5
23-251	250:5	C20	0.3	0.3	0.6	0.6	1.2	0.143	2.0	1.5
23-301	300:5	C20	0.3	0.3	0.3	0.6	1.2	0.171	1.5	1.33
23-401	400:5	C20	0.3	0.3	0.3	0.3	0.8	0.228	1.5	1.0
23-501	500:5	C20	0.3	0.3	0.3	0.3	0.3	0.288	1.5	1.0
23-601	600:5	C50	0.3	0.3	0.3	0.3	0.3	0.343	1.33	1.0

THIS DRAWING IS A CONTROLLED DOCUMENT.		DWN SATYA.M 18JUL2020	TE Connectivity	
DIMENSIONS: in		CHK NIGEL JOHNSON 18JUL2020		
TOLERANCES UNLESS OTHERWISE SPECIFIED:		APVD NIGEL JOHNSON 18JUL2020	NAME ANSI CT 21-25 DIMENSIONAL DRAWING	
0 PLC ±		PRODUCT SPEC	SIZE A2	
1 PLC ±		APPLICATION SPEC	CAGE CODE 00779	DRAWING NO CI-3L534
2 PLC ±		WEIGHT -	RESTRICTED TO -	
3 PLC ±		CUSTOMER DRAWING	SCALE 1:1	SHEET 1 OF 4
4 PLC ±				REV 1
ANGLES ±				
FINISH -				
MATERIAL TBD				

REVISIONS

P	LTR	DESCRIPTION	DATE	DWN	APVD
-	-	SEE SHEET 1	-	-	-

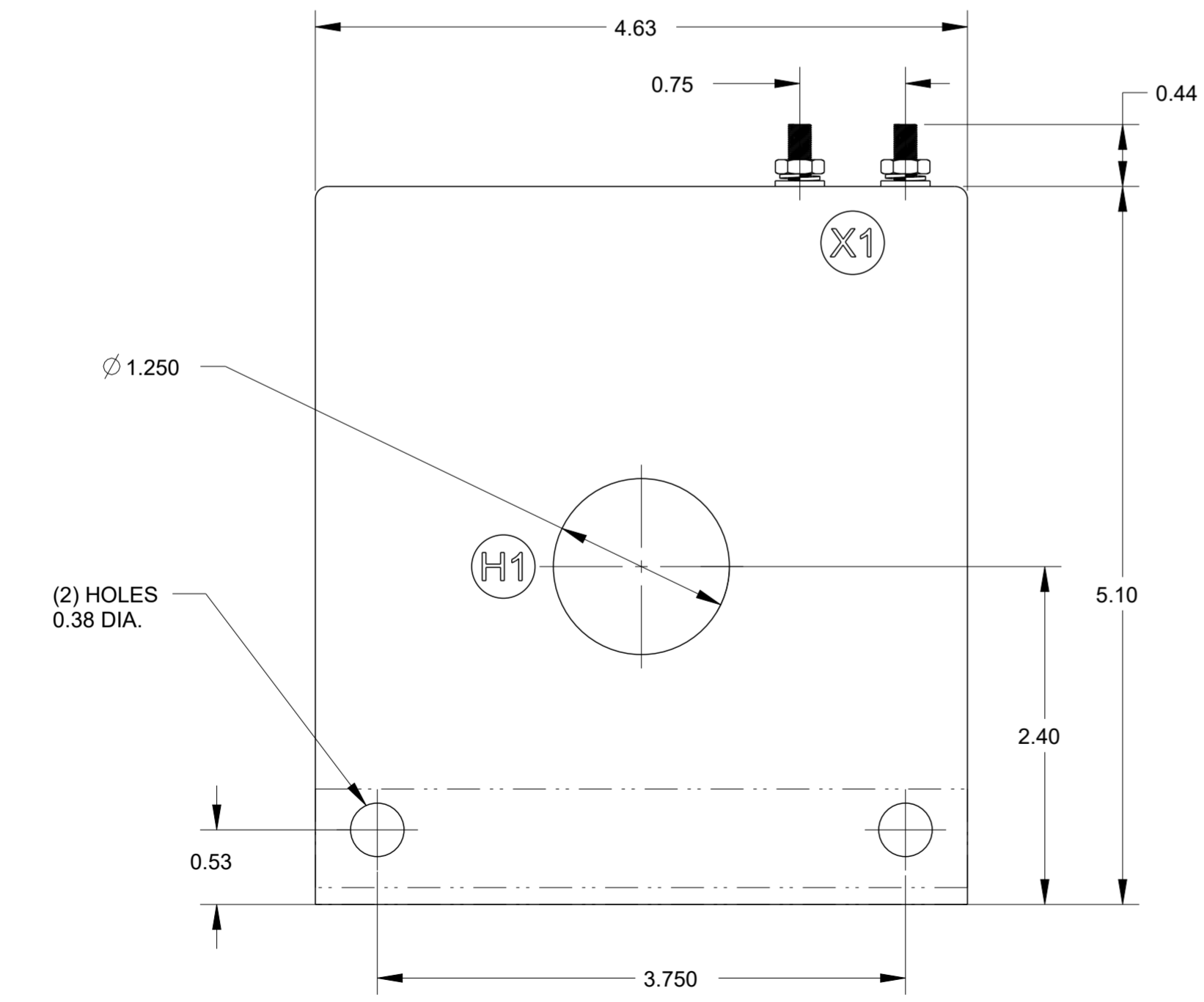
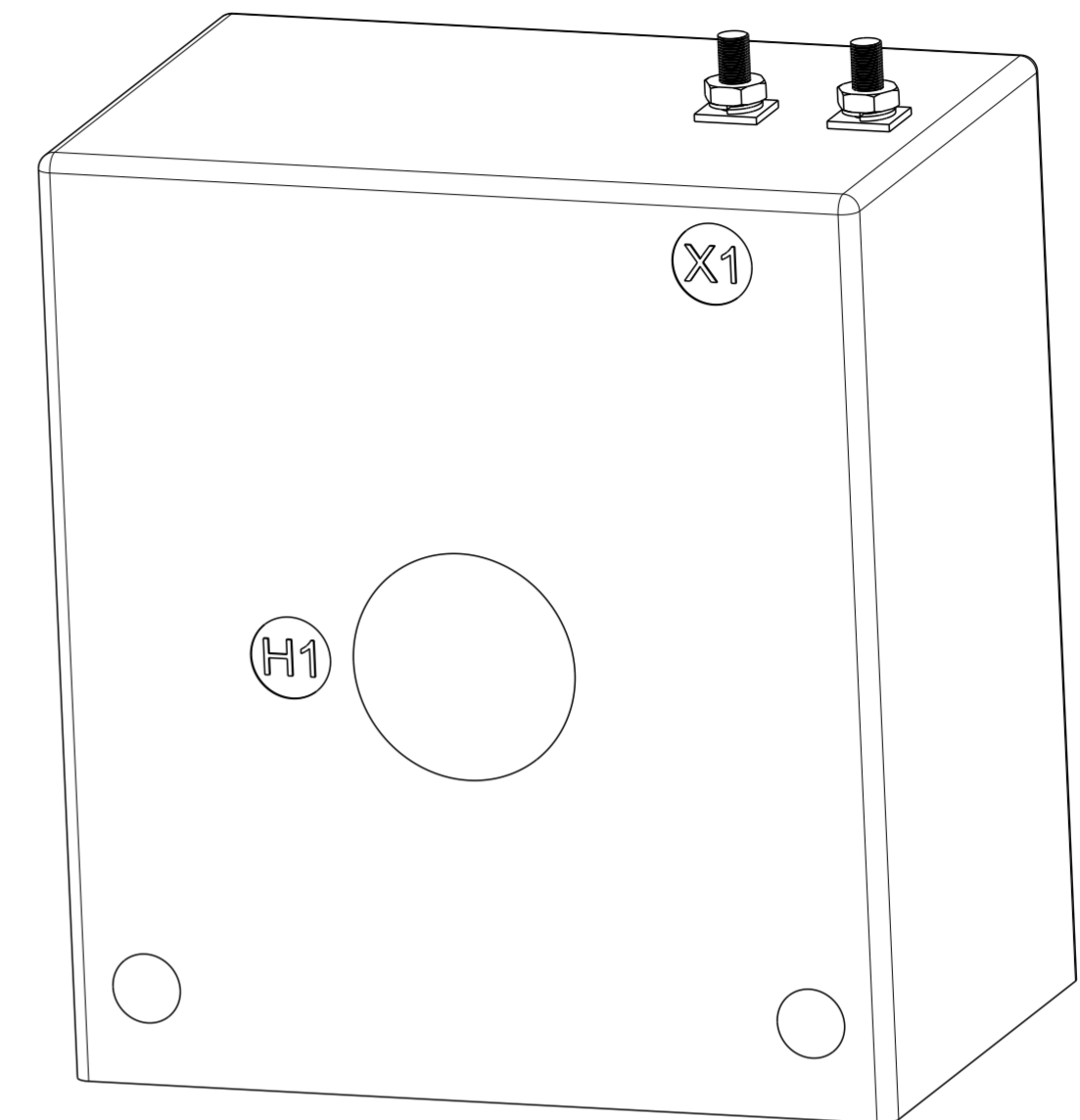
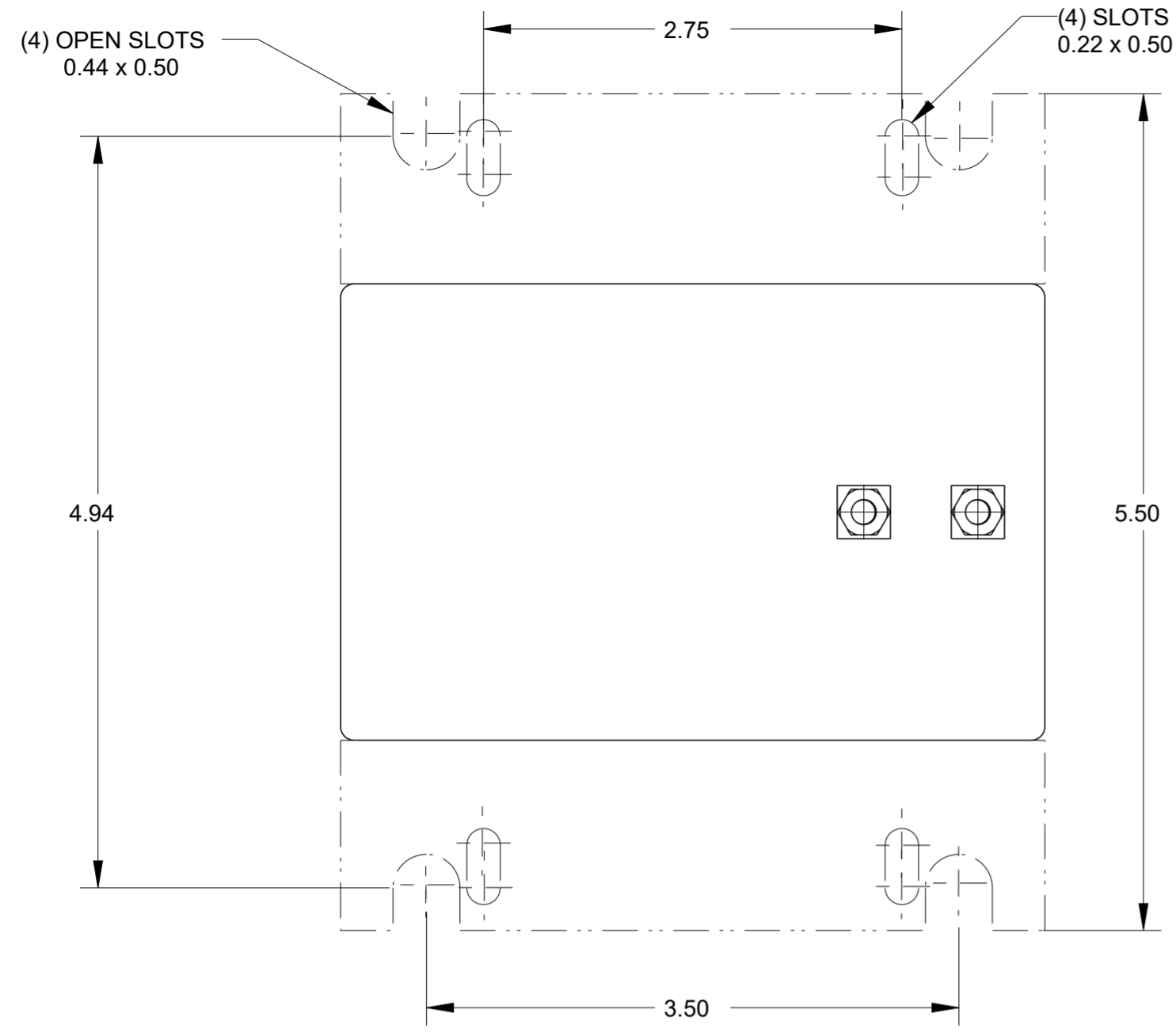


CATALOGUE NUMBER	CURRENT RATIO	RELAY CLASS	ANSI METERING CLASS AT 60 Hz					SECONDARY WINDING RESISTANCE (OHMS @ 75° C)	CONTINUOUS THERMAL RATING FACTOR	
			B0.1	B0.2	B0.5	B0.9	B1.8		@30° C	@55° C
24-101	100:5	-	0.6	1.2	2.4	4.8	-	0.046	2.0	2.0
24-151	150:5	-	0.6	0.6	1.2	2.4	4.8	0.069	2.0	2.0
24-201	200:5	C10	0.3	0.3	0.6	1.2	2.4	0.096	2.0	1.5
43-251	250:5	C10	0.3	0.3	0.3	0.6	1.2	0.118	2.0	1.5
24-301	300:5	C10	0.3	0.3	0.3	0.6	1.2	0.133	2.0	1.5
24-401	400:5	C20	0.3	0.3	0.3	0.6	0.6	0.212	1.5	1.0
24-501	500:5	C20	0.3	0.3	0.3	0.3	0.6	0.265	1.5	1.0
24-601	600:5	C20	0.3	0.3	0.3	0.3	0.3	0.317	1.33	1.0
24-751	750:5	C20	0.3	0.3	0.3	0.3	0.3	0.396	1.0	1.0
24-801	800:5	C20	0.3	0.3	0.3	0.3	0.3	0.423	1.0	0.8
24-102	1000:5	C10	0.3	0.3	0.3	0.3	0.3	0.446	1.0	0.8
24-122	1200:5	C10	0.3	0.3	0.3	0.3	0.3	0.535	1.0	0.8
24-152	1500:5	C10	0.3	0.3	0.3	0.3	0.3	0.669	1.0	0.8
24-162	1600:5	C10	0.3	0.3	0.3	0.3	0.3	0.713	0.8	0.8

THIS DRAWING IS A CONTROLLED DOCUMENT.		DWN SATYA.M 18JUL2020	TE Connectivity	
DIMENSIONS: in		CHK NIGEL JOHNSON 18JUL2020		
TOLERANCES UNLESS OTHERWISE SPECIFIED:		APVD NIGEL JOHNSON 18JUL2020	NAME ANSI CT 21-25 DIMENSIONAL DRAWING	
0 PLC ±		PRODUCT SPEC	SIZE CAGE CODE DRAWING NO RESTRICTED TO	
1 PLC ±		APPLICATION SPEC	A2 00779 C CI-3L534	
2 PLC ±		WEIGHT	SCALE 1:1 SHEET 2 OF 4 REV 1	
3 PLC ±		CUSTOMER DRAWING		
4 PLC ±				
ANGLES ±				
FINISH -				

REVISIONS

P	LTR	DESCRIPTION	DATE	DWN	APVD
-	-	SEE SHEET 1	-	-	-



CATALOGUE NUMBER	CURRENT RATIO	RELAY CLASS	ANSI METERING CLASS AT 60 Hz					SECONDARY WINDING RESISTANCE (OHMS @ 75° C)	CONTINUOUS THERMAL RATING FACTOR	
			B0.1	B0.2	B0.5	B0.9	B1.8		@30° C	@55° C
21-101	50:5	-	1.2	2.4	-	-	-	0.026	2.0	2.0
21-750	75:5	C10	0.6	1.2	2.4	4.8	-	0.042	2.0	2.0
21-101	100:5	C10	0.6	1.2	1.2	2.4	4.8	0.063	2.0	2.0
21-151	150:5	C20	0.3	0.6	0.6	1.2	2.4	0.098	2.0	1.5
21-201	200:5	C20	0.3	0.3	0.6	0.6	1.2	0.126	2.0	1.5
21-251	250:5	C20	0.3	0.3	0.3	0.6	1.2	0.158	1.5	1.5
21-301	300:5	C20	0.3	0.3	0.3	0.3	0.3	0.168	1.5	1.33
21-401	400:5	C50	0.3	0.3	0.3	0.3	0.3	0.253	1.5	1.0
21-501	500:5	C20	0.3	0.3	0.3	0.3	0.6	0.283	1.5	1.0
21-601	600:5	C50	0.3	0.3	0.3	0.3	0.3	0.339	1.3	1.0
21-751	750:5	C50	0.3	0.3	0.3	0.3	0.3	0.424	1.0	0.8
21-801	800:5	C50	0.3	0.3	0.3	0.3	0.3	0.452	1.0	0.8
21-102	1000:5	C100	0.3	0.3	0.3	0.3	0.3	0.565	1.0	0.8

THIS DRAWING IS A CONTROLLED DOCUMENT.

DWN SATYA.M 18JUL2020  
CHK NIGEL JOHNSON 18JUL2020  
APVD NIGEL JOHNSON 18JUL2020

TE Connectivity

ANSI CT 21-25 DIMENSIONAL DRAWING

SIZE A2 CAGE CODE 00779 DRAWING NO. CI-3L534 RESTRICTED TO -

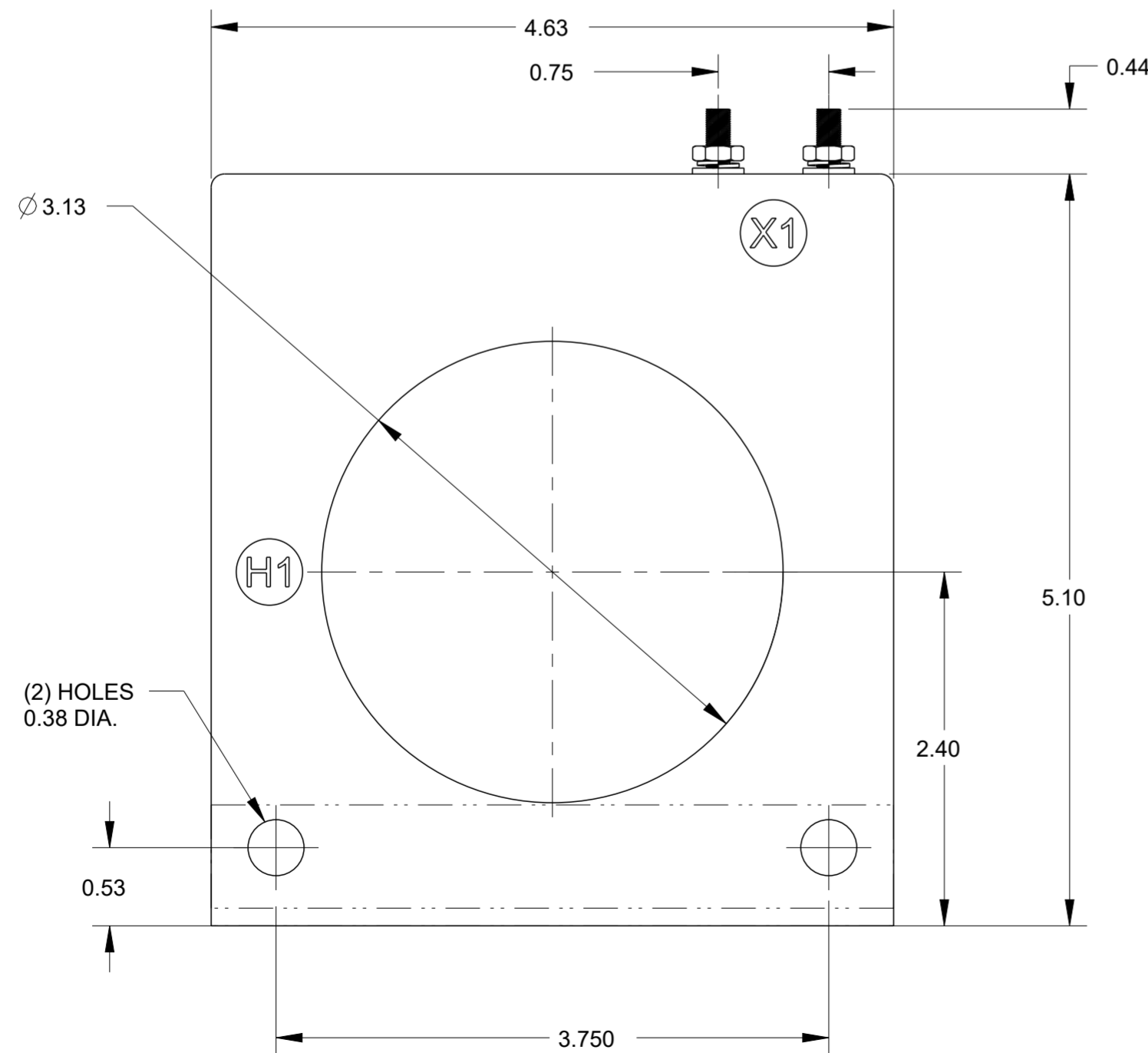
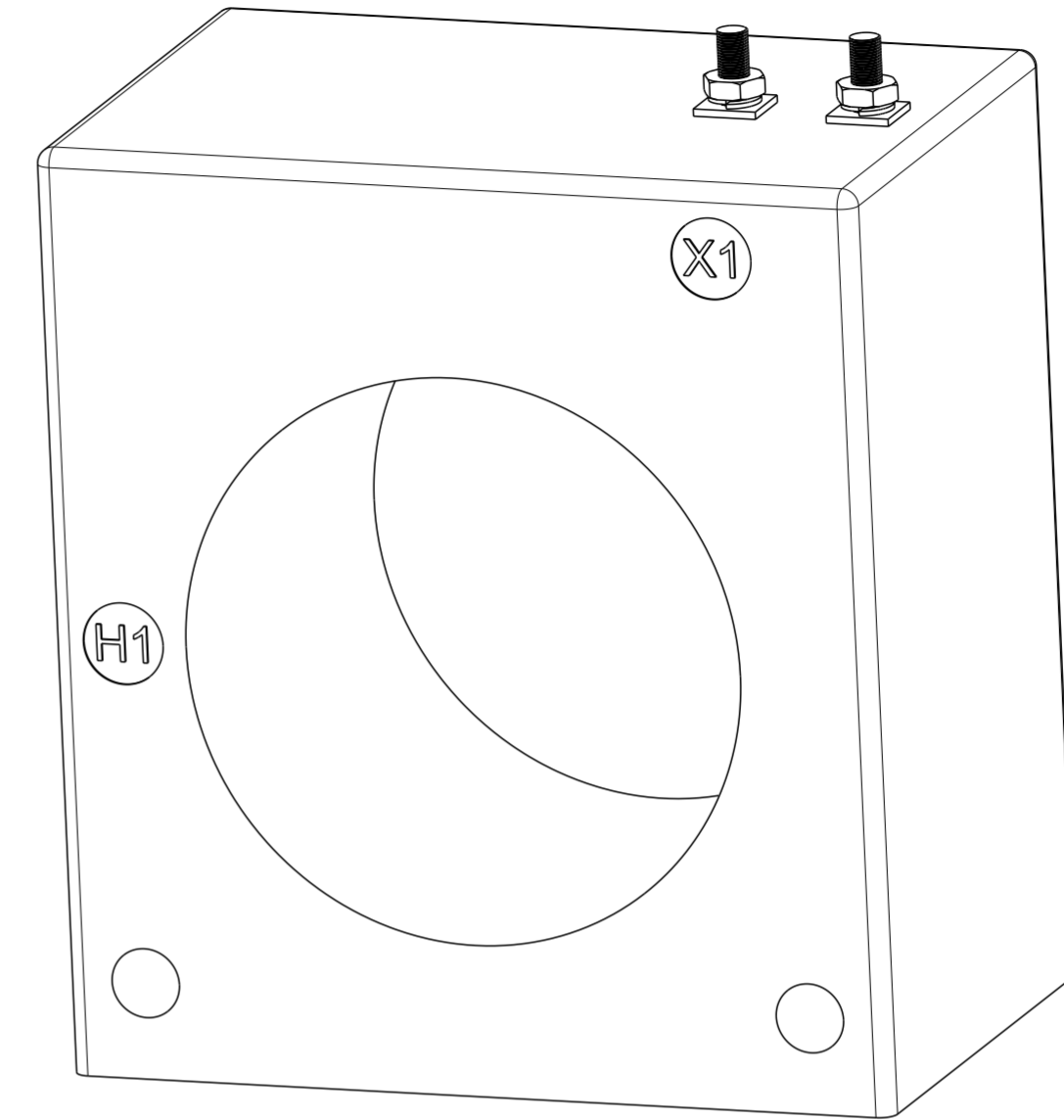
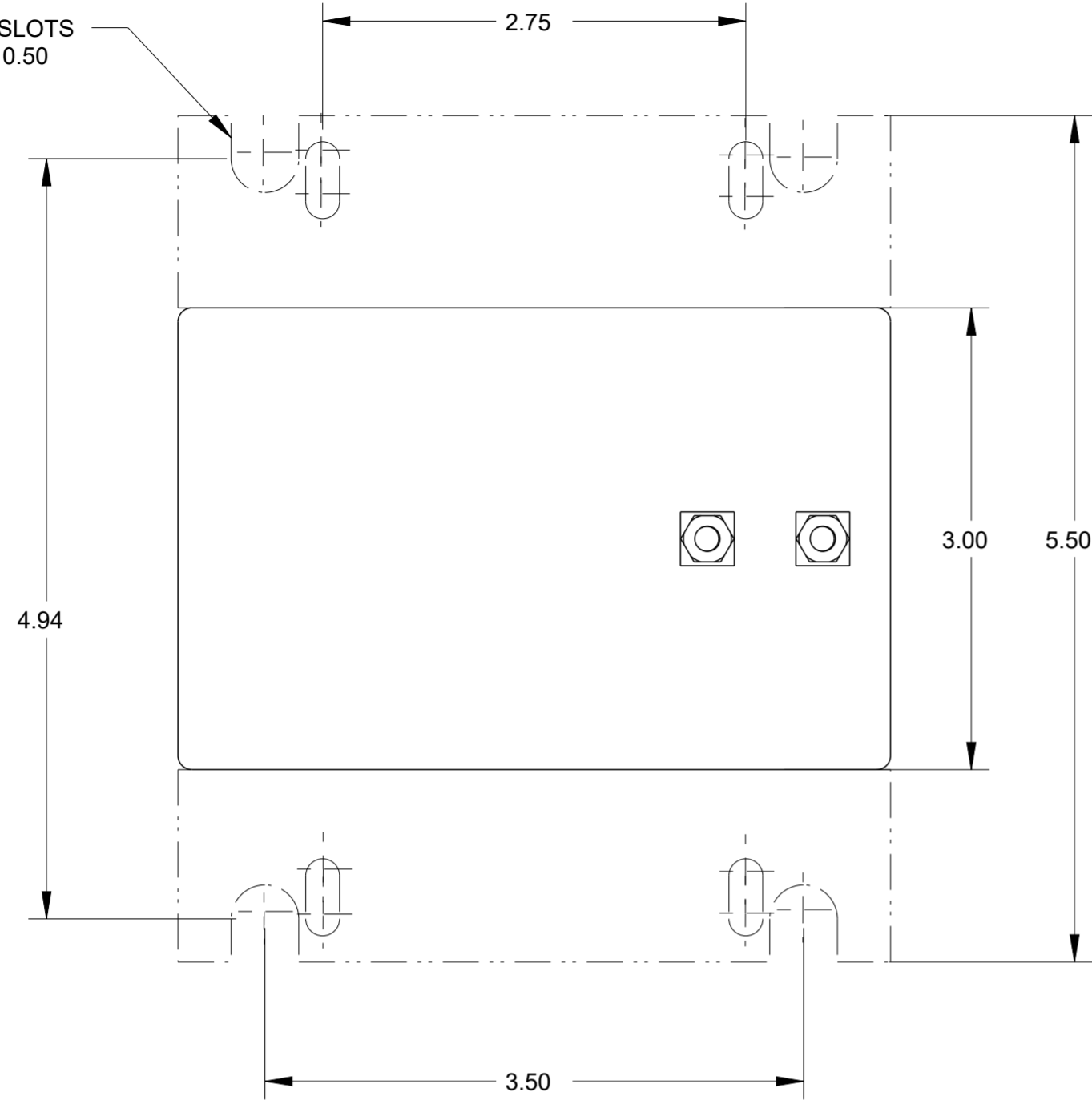
MATERIAL TBD

SCALE 1:1 SHEET 3 OF 4 REV 1

REVISIONS

P	LTR	DESCRIPTION	DATE	DWN	APVD
-	-	SEE SHEET 1	-	-	-

(4) OPEN SLOTS  
0.44 x 0.50



CATALOGUE NUMBER	CURRENT RATIO	V.V FOR +/- 1% CLASS	ANSI METERING CLASS AT 60 Hz					SECONDARY WINDING RESISTANCE (OHMS @ 75° C)	CONTINUOUS THERMAL RATING FACTOR	
			B0.1	B0.2	B0.5	B0.9	B1.8		@30° C	@55° C
25-201	200:5	10	0.6	0.6	1.2	2.4	4.8	0.081	2.0	2.0
25-251	250:5	15	0.3	0.3	1.2	1.2	2.4	0.108	2.0	1.5
25-301	300:5	20	0.3	0.3	0.6	1.2	2.4	0.129	2.0	1.5
25-401	400:5	30	0.3	0.3	0.3	0.6	1.2	0.194	1.5	1.33
25-501	500:5	45	0.3	0.3	0.3	0.6	1.2	0.243	1.5	1.0
25-601	600:5	60	0.3	0.3	0.3	0.3	0.6	0.292	1.33	0.8
25-751	750:5	75	0.3	0.3	0.3	0.3	0.6	0.364	1.0	0.8
25-801	800:5	80	0.3	0.3	0.3	0.3	0.3	0.389	1.0	0.8
25-102	1000:5	100	0.3	0.3	0.3	0.3	0.3	0.486	1.0	0.8
25-122	1200:5	75	0.3	0.3	0.3	0.3	0.3	0.389	1.0	0.8
25-152	1500:5	90	0.3	0.3	0.3	0.3	0.3	0.617	1.0	0.8
25-162	1600:5	95	0.3	0.3	0.3	0.3	0.3	0.658	1.0	0.6
25-202	2000:5	100	0.3	0.3	0.3	0.3	0.3	0.822	0.8	0.6

THIS DRAWING IS A CONTROLLED DOCUMENT.

DWN: SATYA.M 18JUL2020  
CHK: NIGEL JOHNSON 18JUL2020  
APVD: NIGEL JOHNSON 18JUL2020

TE Connectivity

NAME: ANSI CT 21-25 DIMENSIONAL DRAWING

SIZE: A2 CAGE CODE: 00779 DRAWING NO: CI-3L534 RESTRICTED TO: -

MATERIAL: TBD

SCALE: 1:1 SHEET: 4 OF 4 REV: 1