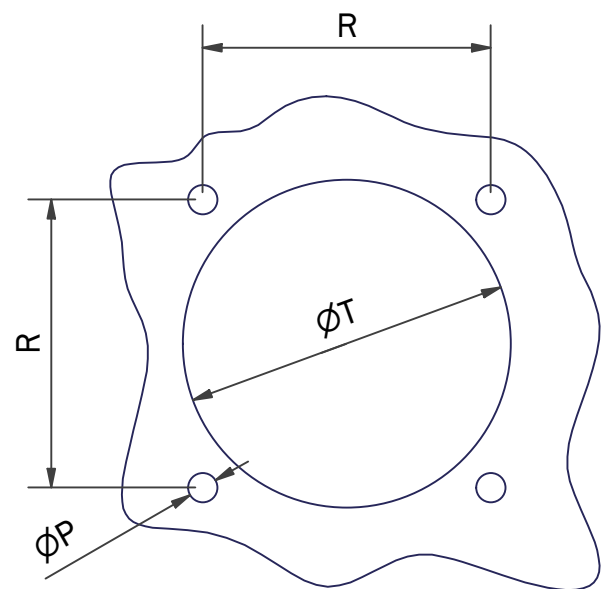


THE CONNECTOR IS SUPPLIED WITH THE TERMINATION FLAT IN THE POSITION SHOWN.

NOTE: THE COMPRESSION NUT IS SECURED WITH THREAD LOCKING COMPOUND AND TIGHTENED TO 15,4Nm.



RECOMMENDED PANEL CUT OUT DIMENSIONS

SHELL SIZE	ØA MAX	B THREAD	ØC	ØP +/-0.2	R	S +/-0.3	ØT +/-0.3
21	34,0	1,375"	19,0	3,25	31,75	39,7	36,12
23	37,0	1,500"	22,0	3,91	34,93	42,9	39,29

PC4HP0011-21PN-1-C

SERIES
SHELL SIZE
CONTACT TYPE - (P = PIN, S = SOCKET)
KEY ARRANGEMENT
MATERIAL AND FINISH - (SEE TABLE)

NOTES
MIL-DTL-38999 STYLE
FINISH
SEE TABLE

MATERIALS
CONTACTS - SILVER PLATED COPPER
SEAL - SILICONE ELASTOMER
INSULATOR - PPS-GL40 - UL94V-0

PERFORMANCE
VOLTAGE RATING 1000Va.c. / 1410Vd.c.
MAXIMUM CONTACT RATING (UNLESS OTHERWISE LIMITED BY CABLE/CRIMP OPTION SELECTED)
SHELL #23 = 800A
SHELL #21 = 600A

CODE	MATERIAL / FINISH
1-C	ALUMINIUM / ELECTROLESS NICKEL
1-B	ALUMINIUM / CADMIUM OLIVE DRAB OVER ELECTROLESS NICKEL
1-ZB	ALUMINIUM / ZINC COBALT OLIVE DRAB OVER ELECTROLESS NICKEL
1-ZK	ALUMINIUM / ZINC COBALT BLACK OVER ELECTROLESS NICKEL
1-ZN	ALUMINIUM / ZINC NICKEL BLACK PASSIVATE OVER ELECTROLESS NICKEL
4-J	STAINLESS STEEL / PASSIVATE
2-Z	NICKEL ALUMINIUM BRONZE / SHOT BLAST

LIST NOT EXHAUSTIVE, FOR COMPREHENSIVE LIST AND SPECS, SEE WEBSITE

DRAWN	R.S.	DATE	 3RD ANGLE PROJECTION NOT TO SCALE UNLESS OTHERWISE SPECIFIED ALL DIMENSIONS IN MILLIMETRES GENERAL TOL LINEAR +/-0,25MM ANGULAR +/- 1°
SALES APPR	J.COWAP	07/02/2022	
DESIGN APPR	M.PAUL	24/03/2016	
PROD APPR			
QUAL APPR			
ISSUE	REV.	DCR	MATERIAL SEE PART NUMBER BREAKDOWN FINISH SEE PART NUMBER BREAKDOWN
2		8318	
NCAGE CODE U5792		WEIGHT	

PART NUMBER:	PC4HP0011-***-**-*
TITLE:	HIGH POWER TERMINAL FLAT RECEPTACLE
ASSY USED ON:	D38999/20 HIGH POWER
THIS DRAWING IS COPYRIGHT AND THE PROPERTY OF POLAMCO LTD IT MUST NOT BE COPIED, USED FOR MANUFACTURE OR OTHERWISE DISCLOSED WITHOUT PRIOR WRITTEN CONSENT OF THE COMPANY.	

Polamco

TE connectivity

SHT 1

DRAWING NO: C6380

POLAMCO LTD, WESTON LOCK, LOWER BRISTOL ROAD BATH BA2 1EP