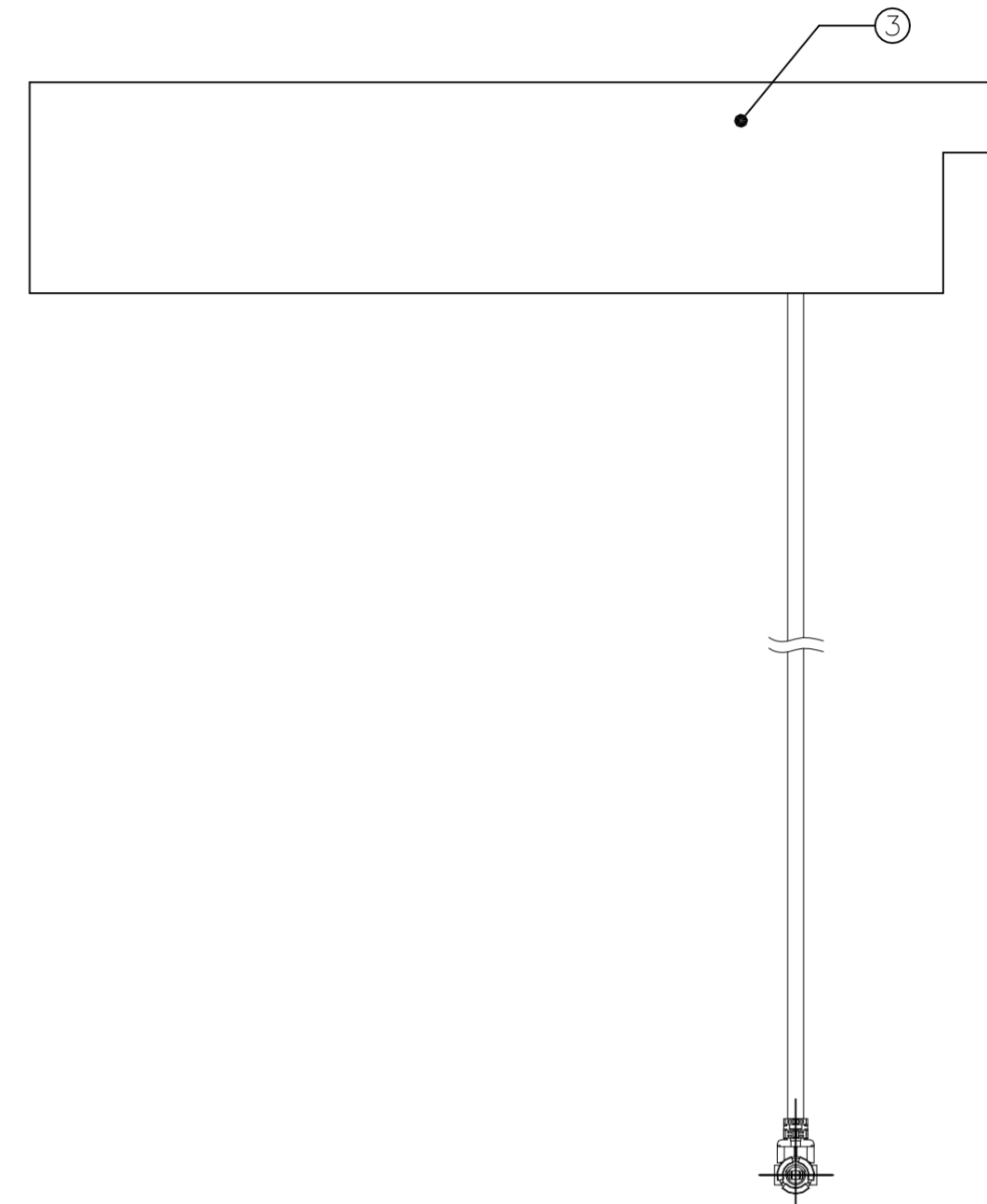
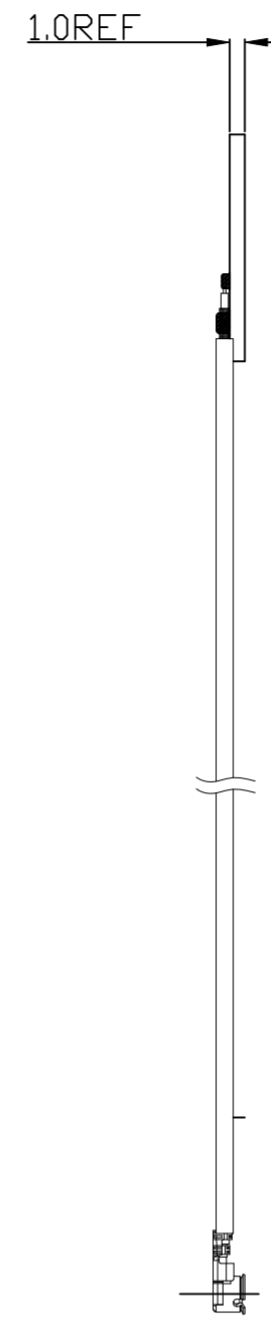
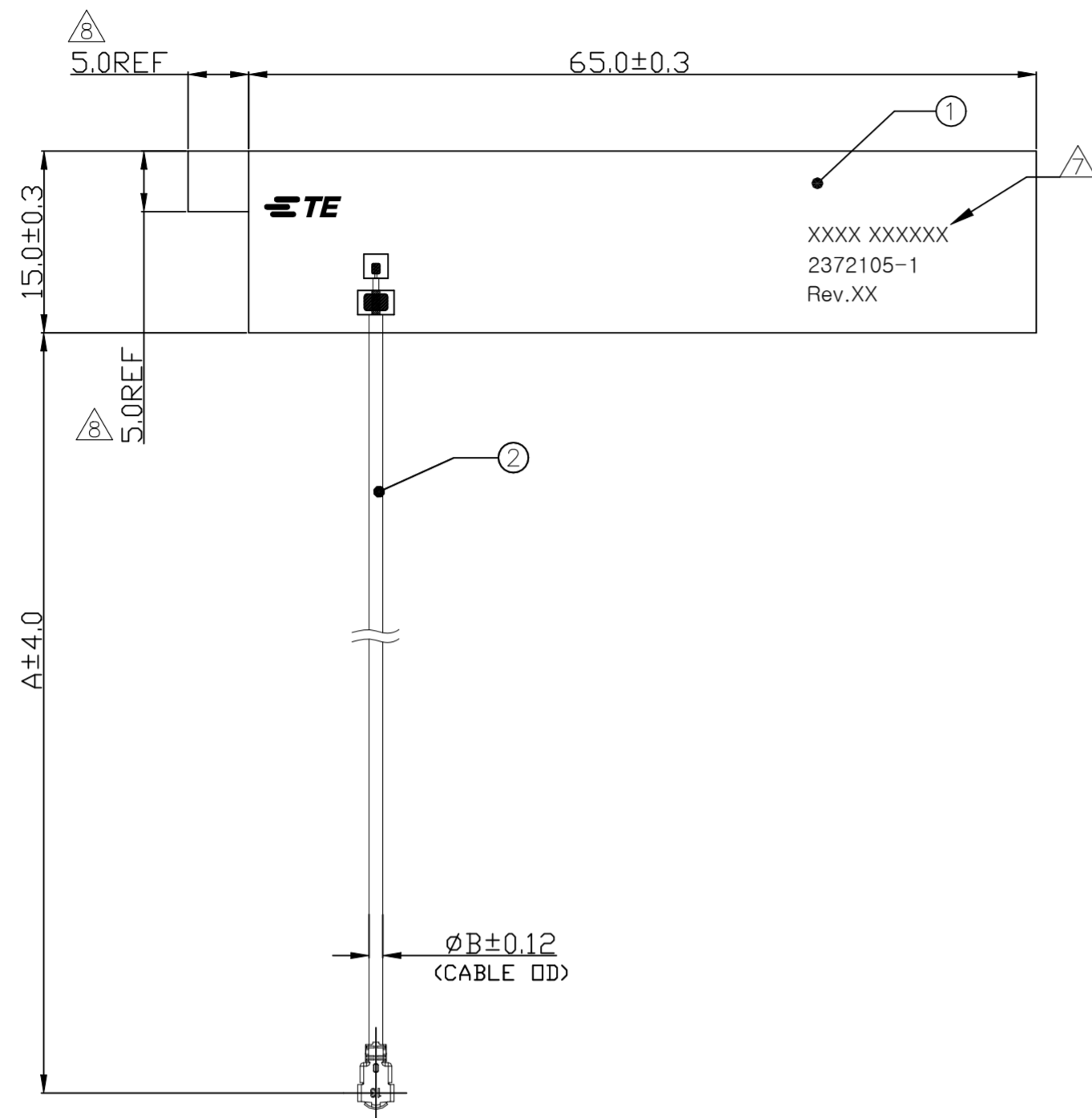


REVISIONS				
P	LTR	DESCRIPTION	DATE	APVD
A1		RELEASED	16JUN2022	DW CY



- FABRICATE TO MEET IPC - 6012, CLASS 2. INSPECT TO MEET IPC - A - 600, CLASS 2.
- MATERIALS :  
A. FR-4 PCB + VHB DOUBLE SIDED ADHESIVE.  
B. ADHESIVE WITH LINER ON THE BACK SIDE. REMOVE LINER TO APPLY
- FINISH:  
A: SOLDERMASK BOTH SIDES: ORANGE  
B: ENIG PLATING.
- GENERAL TOLERANCE: ±0.2
- PACKING : SINGULATED PARTS TO BE SECURELY BAG WARPPED, VACUUM PACKED OR BAGGED IN BULK.
- CONSULT TE CONNECTIVITY DATA SHEET DS2372105.

7. IDENTIFICATION INCLUDES : FOUR DIGIT DATE CODE(FIRST 2 DIGITS FOR THE WEEK CODE AND THE 2ND TWO DIGITS FOR THE YEAR CODE), MANUFACTURING CONTROL NUMBER, TE PART NUMBER & REVISION NO.
8. RELEASE PAPER HANDLE SIZE

DOUBLE-SIDED TAPE	ADHESIVE	3
COAXIAL CABLE & CONN	CABLE ASSY	2
FR-4	PCB ANTENNA	1
MATERIAL	NAME	ITEM NO.

THIS DRAWING IS A CONTROLLED DOCUMENT.	
DIMENSIONS: mm	TOLERANCES UNLESS OTHERWISE SPECIFIED:
	0 PLC ± -
	1 PLC ± -
	2 PLC ± -
	3 PLC ± -
	4 PLC ± -
ANGLES ± -	
MATERIAL	FINISH
-	-

UMCC GEN.1 (MHF1 TYPE)	1.13	100	2372105-2
		150	2372105-1
CONNECTOR TYPE	B	A	PART NUMBER
	DIMENSION		

DWN H.KIKUCHI 28SEP2020		TE Connectivity	
CHK S.HOO 28SEP2020	NAME		
APVD C.AMOS 28SEP2020	LTE ANTENNA ASSEMBLY		
PRODUCT SPEC	PCB ANTENNA SMALLER SIZE COTS		
APPLICATION SPEC	SIZE	CAGE CODE	DRAWING NO
	A2	00779	C=2372105
WEIGHT 0	SCALE 2:1	SHEET 1 of 1	REV A1
CUSTOMER DRAWING			