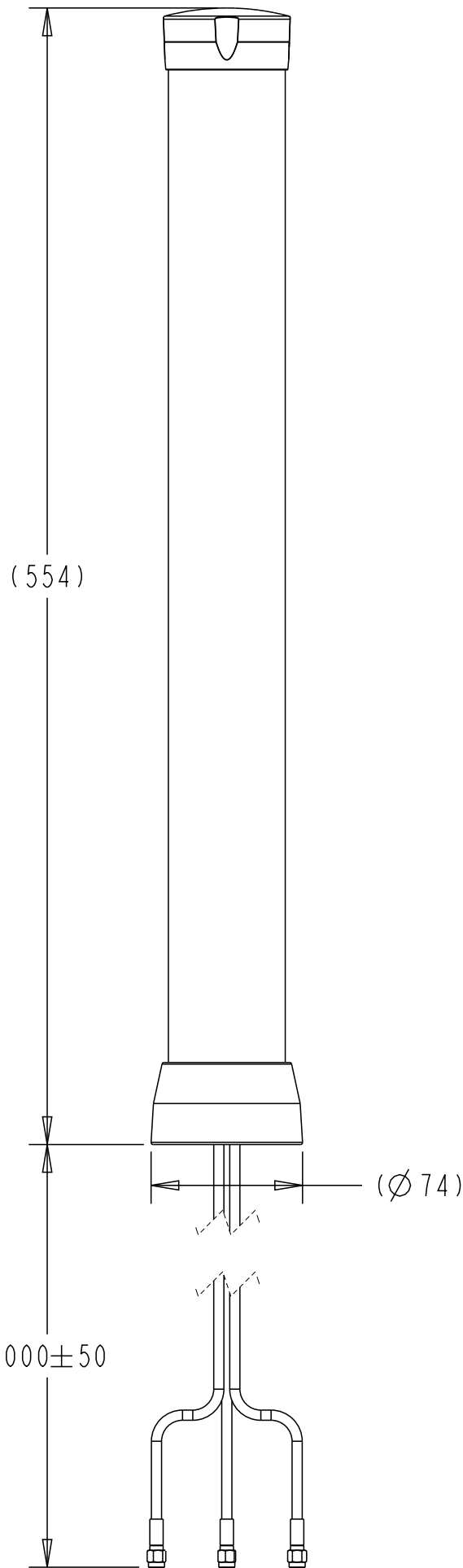


*Note: Data for Peak Gain and Total Efficiency is measured with 0.5m cable length
 **Note: VSWR data is measured with the antenna installed on the mounting bracket
 ***Note: Simulation data

REVISIONS

P	LTR	DESCRIPTION	DATE	DWN	APVD
	A	ECN-23-199917	23FEB2023	CYH	WTN
	A2	ECN-23-222705	18JUL2023	CYH	WTN



Parameter	Performance			
Part Number	OPT61603G-500SMAM			
TCPN	L000320-02			
Frequency Bands, MHz	617-960	1427-2700	3300-4800	4900-6000
Peak Gain, dBi (Max)*	2.93	5.63	3.83	3.77
Total Efficiency (Average)*	77%	78%	63%	63%
VSWR (Average)**	<2.5:1			
ECC***	<0.1			
Nominal Impedance	50 Ohm			
Polarization	Linear, Vertical			
Azimuth Beam Width	360°, Omnidirectional			
Input Power, Max	10W			
Operating Temperature	-40°C ~ +85°C			
Storage Temperature	-40°C ~ +85°C			
Weight (Without mounting)	997g			
RF Connector	SMA, Male			
Radome	Polycarbonate, UV			
Cap & Base	ASA, UV			
Color	White			
Cable	LMR195 equivalent Black			
Cable Length	5m			
Wind Rating (Survival)	110mph			
Ingression Protection	IP67			
Material Compliance	RoHS			
GNSS SPEC				
Frequency, MHz	1559-1610			
Passive Gain	5dBic			
Active Gain	32dBic			
LNA Gain	28±3dB			
Noise Figure	≤2.5dB			
OOB Rejection	698-960MHz >80dBc	1428-1511MHz >80dBc	1710-2700MHz >80dBc	4900-5800MHz >80dBc
Input Max Power	10dBm			
Current Consumption	8.5±3mA (at 3.0V)			
DC Voltage	2.5~7V			

A2

THIS DRAWING IS A CONTROLLED DOCUMENT.

DWN 23-FEB-2023

CY HANG

CHK 23-FEB-2023

WT NG

APVD 23-FEB-2023

WT NG

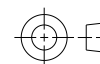
NAME
 OMNI, 2x2 MIMO BATON
 617-960/1427-6000MHZ



TE Connectivity

DIMENSIONS:

mm



TOLERANCES UNLESS OTHERWISE SPECIFIED:

- 0 PLC ±-
- 1 PLC ±0.25
- 2 PLC ±0.13
- 3 PLC ±0.001
- 4 PLC ±0.0001
- ANGLES ±0.

MATERIAL

FINISH

23-FEB-2023

23-FEB-2023

23-FEB-2023

WT NG

WT NG

108-160799

PRODUCT SPEC

APPLICATION SPEC

-

WEIGHT

-

CUSTOMER DRAWING

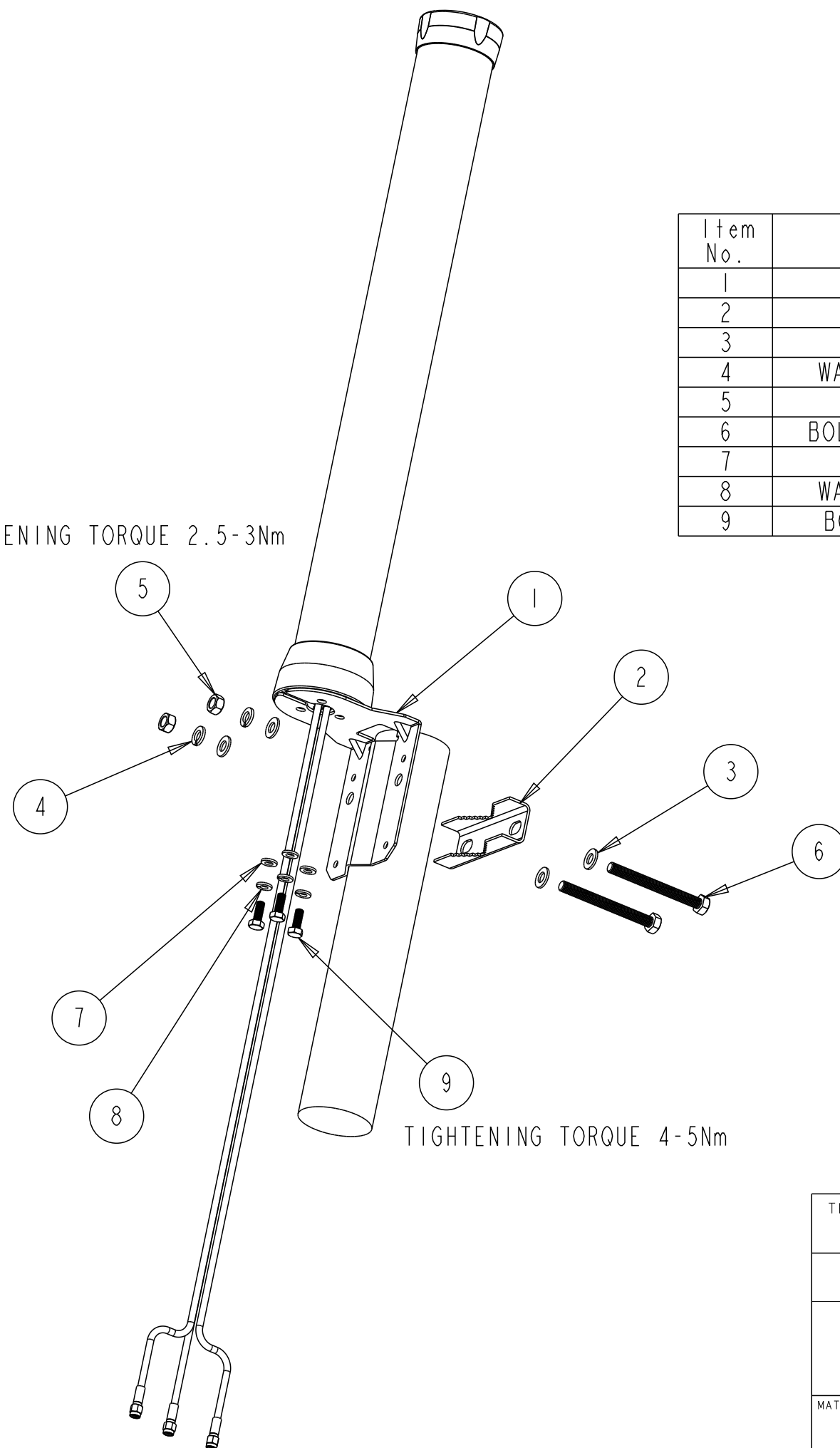
SIZE A3 CAGE CODE 00779 DRAWING NO. C=L000320-02 RESTRICTED TO -

SCALE 1:10 SHEET 1 OF 3 REV A2

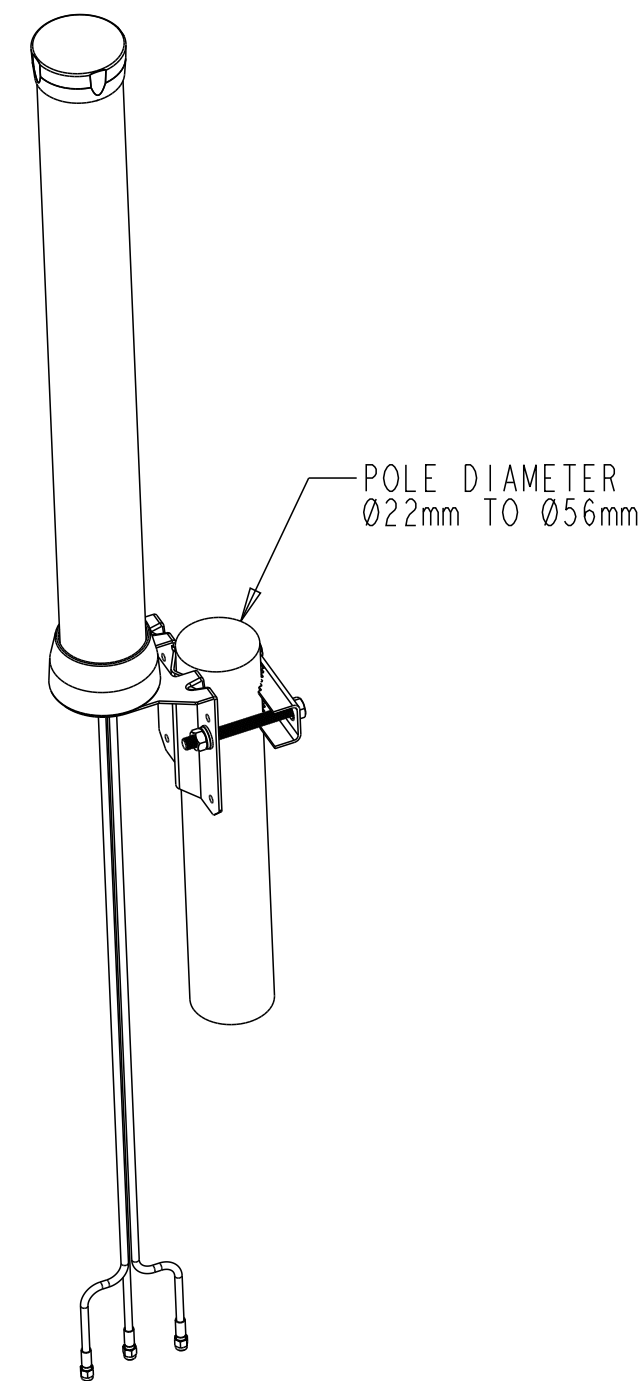
P	LTR	DESCRIPTION	DATE	DWN	APVD

Item No.	DESCRIPTION	QUANTITY
1	MOUNT BRACKET	1
2	POLE CLAMP	1
3	WASHER, FLAT M8	4
4	WASHER, SPLIT LOCK M8	2
5	NUT, HEX M8x1.25	2
6	BOLT, HEX M8x1.25x80mm	2
7	WASHER, FLAT M6	3
8	WASHER, SPLIT LOCK M6	3
9	BOLT, HEX M6x1x16mm	3

TIGHTENING TORQUE 2.5-3Nm



TIGHTENING TORQUE 4-5Nm

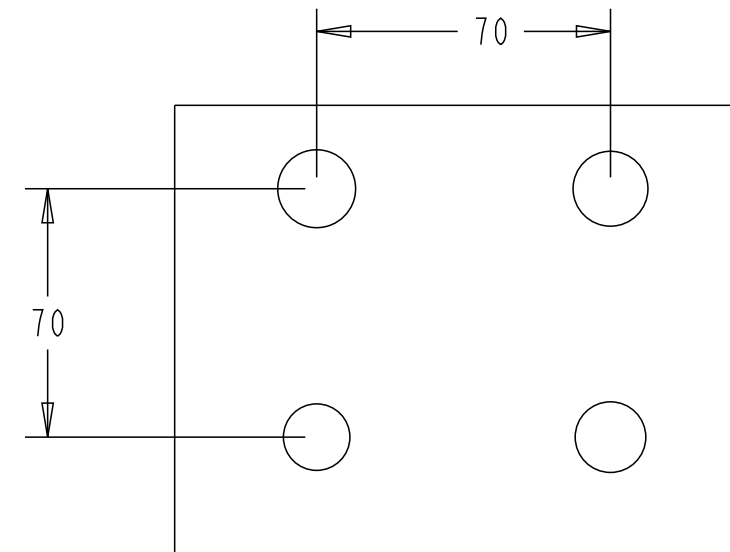
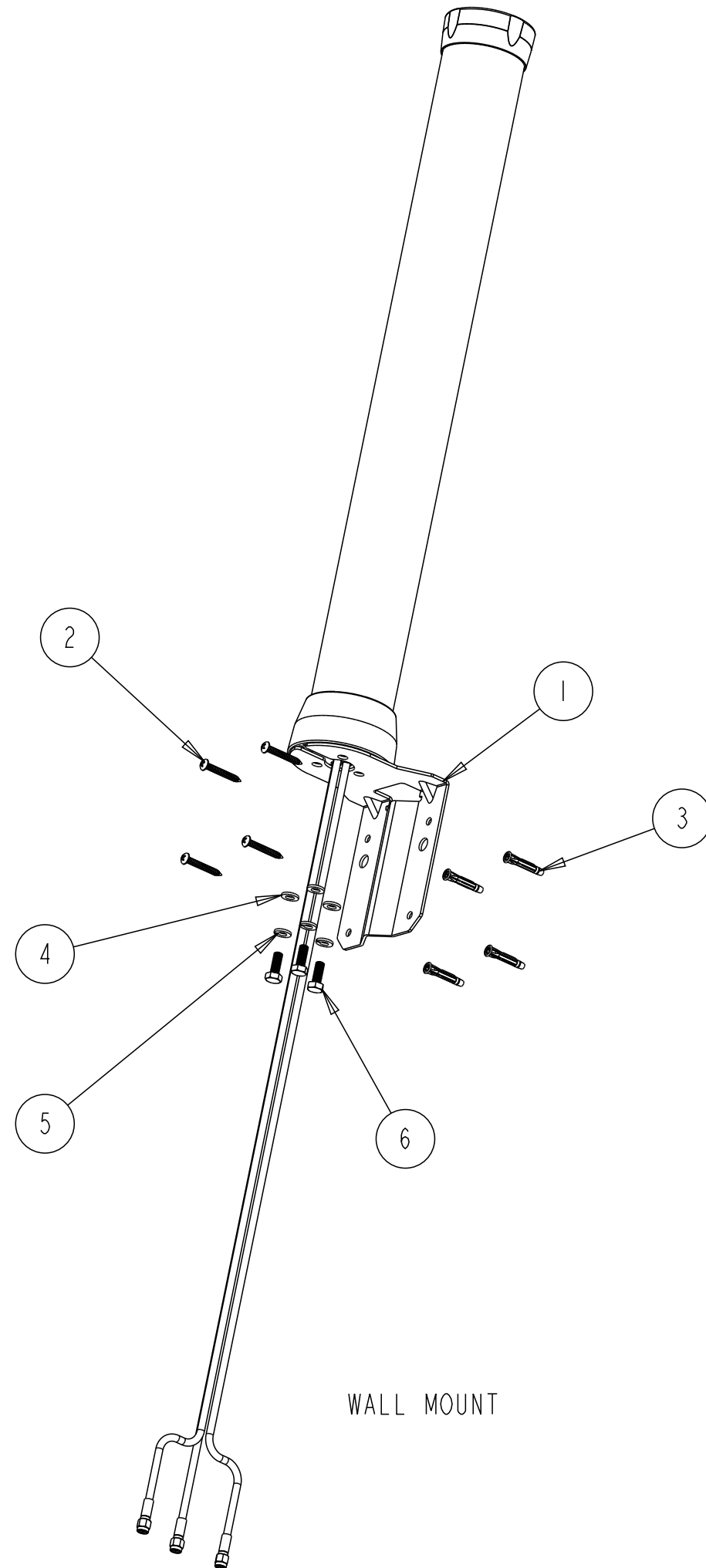


POLE MOUNT

THIS DRAWING IS A CONTROLLED DOCUMENT.		DWN CY HANG	23-FEB-2023		
DIMENSIONS: mm		CHK WT NG	23-FEB-2023		
TOLERANCES UNLESS OTHERWISE SPECIFIED:		APVD WT NG	23-FEB-2023	NAME OMNI, 2x2 MIMO BATON 617-960/1427-6000MHZ	
0 PLC ±-		PRODUCT SPEC	108-160799	APPLICATION SPEC	
1 PLC ±0.25		-		SIZE	A3
2 PLC ±0.13		-		CAGE CODE	00779
3 PLC ±0.001		-		DRAWING NO	©-L000320-02
4 PLC ±0.0001		-		RESTRICTED TO	-
ANGLES ±0.		-		SCALE	1:10
MATERIAL		-		SHEET	2 OF 3
FINISH		-		REV	A2
-		-		CUSTOMER DRAWING	

P	LTR	DESCRIPTION	DATE	DWN	APVD

Item No.	DESCRIPTION	QUANTITY
1	MOUNT BRACKET	1
2	SCREW, PHILIP 8-18x1-1/4	4
3	ANCHOR, TWIST ACTION 6-8x1-1/4	4
4	WASHER, FLAT M6	3
5	WASHER, SPLIT LOCK M6	3
6	BOLT, HEX M6x1x16mm	3



WALL HOLE DIMENSION

WALL MOUNT

THIS DRAWING IS A CONTROLLED DOCUMENT.		DWN CY HANG	23-FEB-2023		
DIMENSIONS: mm		CHK WT NG	23-FEB-2023		
TOLERANCES UNLESS OTHERWISE SPECIFIED:		APVD WT NG	23-FEB-2023	NAME OMNI, 2x2 MIMO BATON 617-960/1427-6000MHZ	
0 PLC ±-		PRODUCT SPEC	108-160799	APPLICATION SPEC	
1 PLC ±0.25		-		SIZE	A3
2 PLC ±0.13		-		CAGE CODE	00779
3 PLC ±0.001		-		DRAWING NO	©-L000320-02
4 PLC ±0.0001		-		RESTRICTED TO	-
ANGLES ±0.		-		SCALE	
MATERIAL		WEIGHT		1:10	
FINISH		-		SHEET 3 OF 3	
-		-		REV A2	