

THIS DRAWING IS UNPUBLISHED. RELEASED FOR PUBLICATION
 © COPYRIGHT - TE Connectivity Ltd. ALL RIGHTS RESERVED.

REVISIONS					
P	LTR	DESCRIPTION	DATE	DWN	APVD
	A	INITIAL DRAWING	28NOV2019	RV	JR

Product Specifications for H-14 and H-16

Contact Arrangement — DPDT
Contact Form — 2C
Test Voltage, DC or 60 Hz (Peak) — 15 kV
Rated Operating Voltage (Peak) — DC or 60 Hz — 12 kV
 2.5 MHz — 10 kV
 16 MHz — 8 kV
 32 MHz — 5 kV
Continuous Carry Current, Max. — DC or 60 Hz — 30 A
 2.5 MHz — H-14 — 15 A
 H-16 — 10 A
 16 MHz — H-14 — 10 A
 H-16 — 6 A
 32 MHz — H-14 — 8 A
 H-16 — 4 A
 Coil Hi-Pot (Vrms, 60 Hz) — 500 A

Contact Capacitance —
 Between Open Contacts — 1 pF
 Open Contacts to Ground — 2.5 pF
Contact Resistance, Max. —
 H-14 — 0.015 ohm
 H-16 — 0.03 ohm
Operate Time, Max. — 20 ms
Release Time, Max. — 20 ms
Shock, 11ms, 1/2 Sine (Peak) — 20 g
Vibration —
 Peak — 10 g (55 to 500 Hz)
Operating Ambient Temperature Range — -55°C to +125°C
Mechanical Life (Operations x 10⁶) —
 H-14 — 1 million cycles
 H-16 — 500,000 cycles
Weight, Nominal —
 H-14 — 226.8 g (8 oz.)
 H-16 — 170.1 g (6 oz.)

H-16 & H-16C Product Facts for H-16 & H-16C

- 12 kV rating; isolates 5 kV at 32 MHz
- Vacuum dielectric for power switching low current loads
- Double pole, double throw contacts
- Widely used as a transmit/receive switch
- Meets requirements of MIL-R-83725

H-14 & H-14-C Product Facts for H-14 & H-14-C

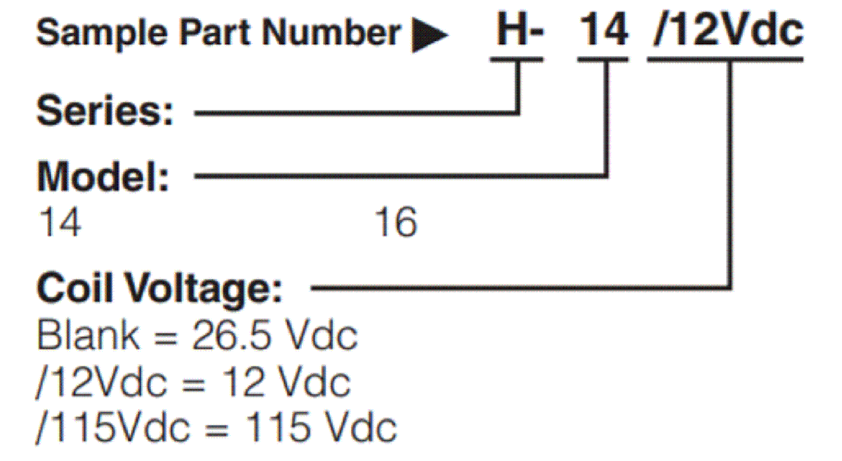
- Double pole, double throw contacts
- Vacuum dielectric for power switching low current loads
- 30 Amps DC continuous current rating
- Corona shield high voltage terminals available
- Meets requirements of MIL-R-83725

Coil Data

Nominal Volts DC	12 Vdc	26.5 Vdc	115 Vdc
Pickup, Max.	8 Vdc	16 Vdc	80 Vdc
Dropout	.5-5 Vdc	1-10 Vdc	5-50 Vdc
Coil Resistance (±10%)	24 Ω	120 Ω	2000 Ω

Ratings listed are for 25°C, sea level conditions

Ordering Information



THIS DRAWING IS A CONTROLLED DOCUMENT.		DWN RV 28NOV2019	TE Connectivity			
DIMENSIONS: INCHES		CHK RV 28NOV2019				
	TOLERANCES UNLESS OTHERWISE SPECIFIED:	APVD JR 28NOV2019	NAME			
	0 PLC ± - 1 PLC ± - 2 PLC ± - 3 PLC ± - 4 PLC ± - ANGLES ± -	PRODUCT SPEC	H14, H16 AND H14-C, H16-C SERIES			
MATERIAL	FINISH	WEIGHT	SIZE	CAGE CODE	DRAWING NO	RESTRICTED TO
-	-	-	A3	-	©-H14/H16 SERIES	-
CUSTOMER DRAWING			SCALE	SHEET	REV	
			NTS	1 OF 2	A	

THIS DRAWING IS UNPUBLISHED.

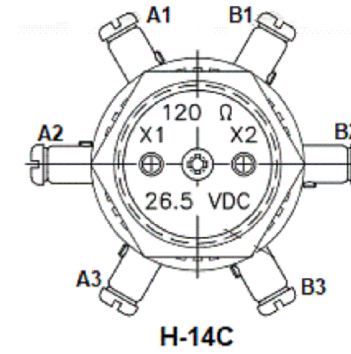
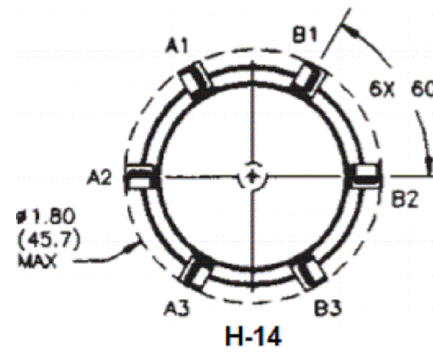
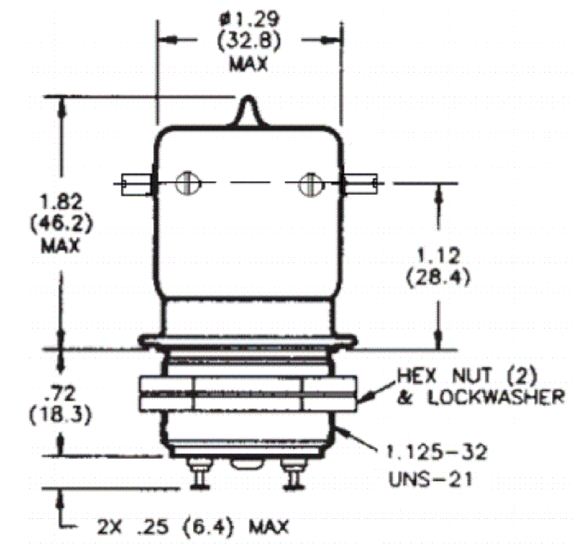
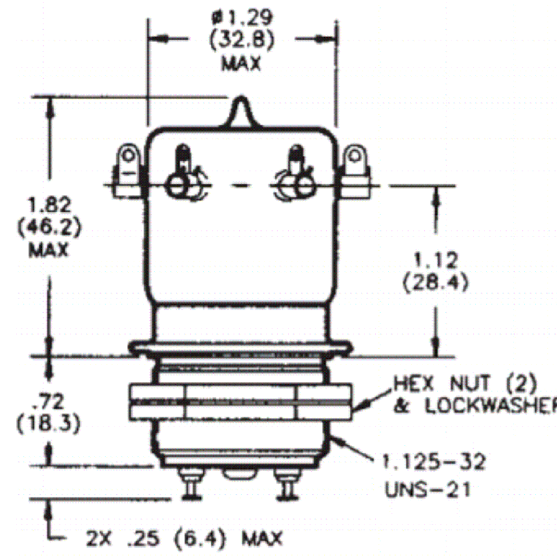
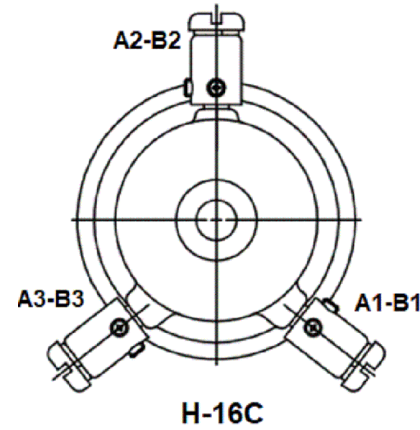
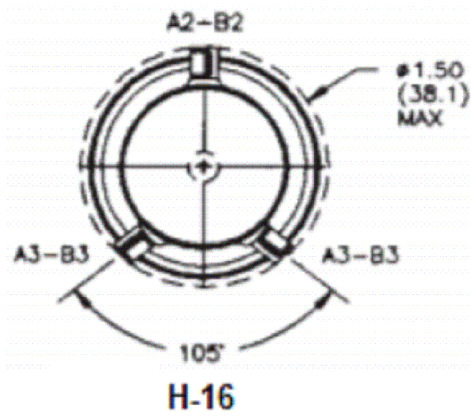
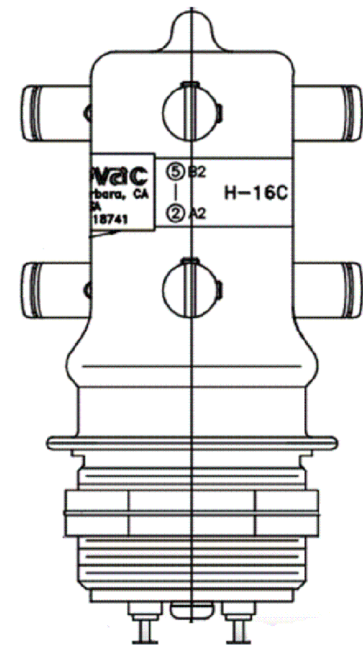
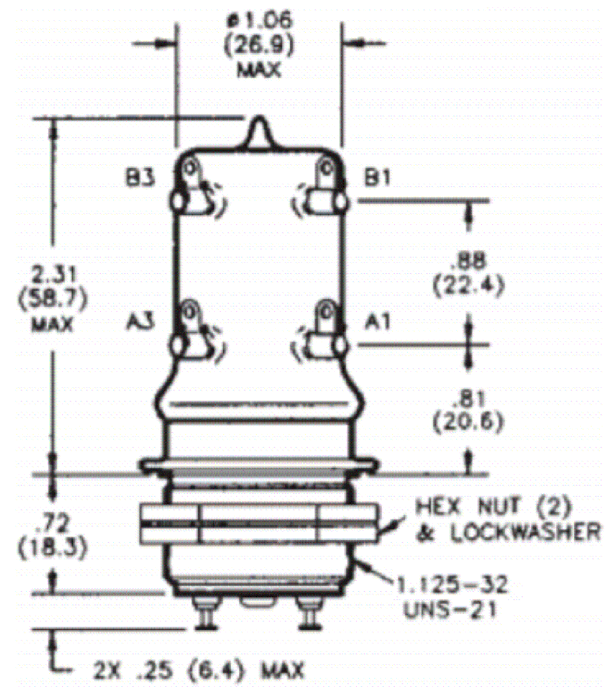
RELEASED FOR PUBLICATION

REVISIONS

© COPYRIGHT - TE Connectivity Ltd.

ALL RIGHTS RESERVED.

P	LTR	DESCRIPTION	DATE	DWN	APVD
-	-	SEE SHEET 1	-	-	-



NOTE:

1. DIFFERENCE ARE THE TERMINALS BETWEEN H-16 & H-16C AND H-14 & H-14C.

ALL DIMENSIONS ARE IN INCHES(MM)

THIS DRAWING IS A CONTROLLED DOCUMENT.		DWN RV 28NOV2019	TE Connectivity		
DIMENSIONS: INCHES		CHK RV 28NOV2019			
TOLERANCES UNLESS OTHERWISE SPECIFIED:		APVD JR 28NOV2019	SIZE A3		
		PRODUCT SPEC			
0 PLC ± - 1 PLC ± - 2 PLC ± - 3 PLC ± - 4 PLC ± - ANGLES ± -		APPLICATION SPEC	DRAWING NO H14/H16 SERIES		
MATERIAL		WEIGHT			
-		-	SCALE NTS		
		CUSTOMER DRAWING			
			REV A		