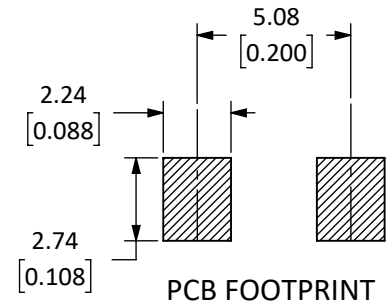
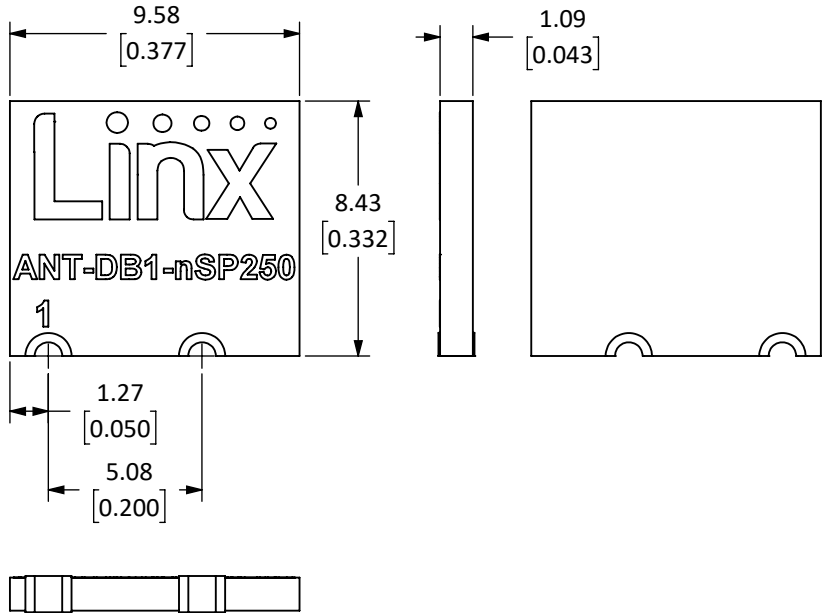


PART NUMBER	DESCRIPTION	QTY
ANT-DB1-nSP250-B	CUT TAPE	-
ANT-DB1-nSP250-T	TAPE AND REEL	1000

REVISIONS			
REV	DESCRIPTION	DATE	APPV
A	INITIAL RELEASE OF LINX INTERNAL DRAWING	16-OCT-19	RS



- NOTES: (UNLESS OTHERWISE SPECIFIED)
1. ALL DIMENSIONS ARE IN MILLIMETERS [INCHES].
 2. DIMENSIONS APPLY AFTER FINISHING.
 3. MANUFACTURE TO BE COMPLIANT WITH EU RoHS DIRECTIVE, USE MATERIALS THAT DO NOT CONTAIN REACH SUBSTANCES OF VERY HIGH CONCERN >1000ppm, AND USE DRC CONFLICT-FREE SOURCED MATERIALS.
 4. SAFETY BREAK ALL SHARP CORNERS AND EDGES .02 MAXIMUM.

WARNING: THIS DRAWING CONTAINS PROPRIETARY INFORMATION THAT IS THE SOLE PROPERTY OF LINX TECHNOLOGIES, AND SHALL BE TREATED AS SUCH. NO DISCLOSURE OR REPRODUCTION OF THIS DOCUMENT IS PERMITTED, IN WHOLE OR IN PART, WITHOUT THE EXPRESS WRITTEN PERMISSION OF LINX TECHNOLOGIES OR ITS DESIGNATED AGENTS.



159 ORT LANE
MERLIN, OR 97532

TITLE:
nSPLATCH ANTENNA
2.4-2.5GHz & 5.125-5.875GHz

SIZE DWG. NO. REV
A C-ANT-DB1-nSP250 **A**

SCALE: 4:1 DO NOT SCALE DRAWING SHEET 1 OF 2



SCALE 1 : 1

NOTES: (CONT.)

SEE SHEET 1 FOR REVISIONS

5. PERFORMANCE REQUIREMENTS

FREQUENCY RANGE	WIFI	U-NII	5.8 GHz WIFI/ U-NII-3
	2.4 GHz – 2.5 GHz	5.150 GHz – 5.725 GHz	5.725 GHz – 5.875 GHz
VSWR	$\leq 2.0 : 1$	$\leq 2.2 : 1$	$\leq 2.4 : 1$
PEAK GAIN	2.7 dBi	4.3 dBi	3.7 dBi
AVERAGE GAIN	-1.8 dBi	-1.9 dBi	-1.6 dBi
EFFICIENCY	65%	60%	70%

POLARIZATION: LINEAR

PATTERN: OMNIDIRECTIONAL

WAVELENGTH: 1/4 WAVE

IMPEDANCE: 50 Ω

CONNECTION: SURFACE MOUNT SOLDER PAD

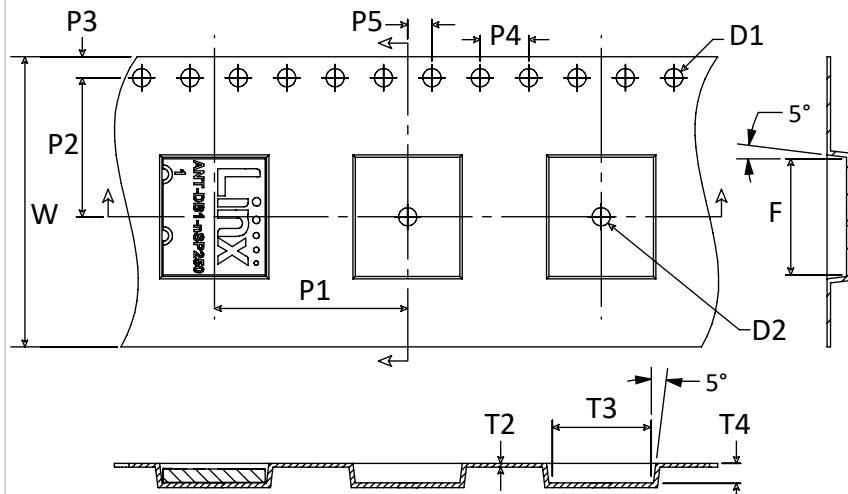
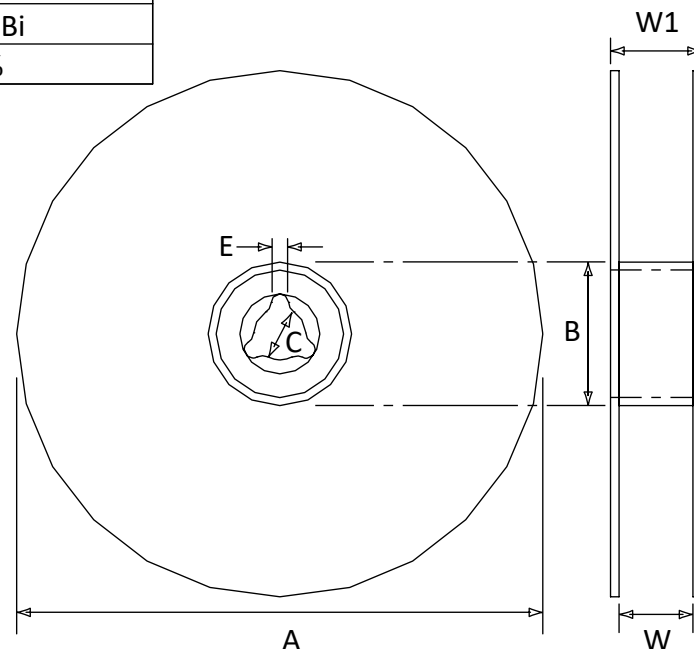
WEIGHT: 0.16g (0.006 oz)

OPERATING/STORAGE TEMPERATURE: -40 °C TO +130 °C

6 SCREEN PRINT GRAPHICS PER FILE *ANT-DB1-nSP250-PRINT ARTWORK.ai*.
COLOR: WHITE

7 PACKAGING INSTRUCTIONS:

- APPLY LABEL, LBL-REEL-3.3x1.2, TO OUTSIDE OF REEL.
- MARK LABEL WITH LINX PART NUMBER, MFG CODE, LINX PO NUMBER, (LINK PO NUMBER IN LOT CODE FIELD) AND QUANTITY.
- VACUUM PACK REEL WITH DESSICANT PACK (NO HIT CARD) INSIDE.
- APPLY SECOND LINX LABEL, LBL-REEL-3.3x1.2, TO VACUUM SEALED BAG.
- MARK SECOND LABEL WITH LINX PART NUMBER, MFG CODE, LINX PO NUMBER, (LINX PO NUMBER IN LOT CODE FIELD) AND QUANTITY.



TAPE DIMENSIONS		
SYMBOL	DIMENSION (mm)	TOLERANCE
D1, D2	1.50	+ 0.10 - 0.00
F	9.9	± 0.10
P1	16.00	± 0.10
P2	11.50	± 0.10
P3	1.75	± 0.10
P4	4.00	± 0.10
P5	2.00	± 0.10
T2	0.30	± 0.05
T3	8.70	± 0.10
T4	1.40	± 0.10
W	24.00	± 0.30

REEL DIMENSIONS		
SYMBOL	nSP250	UNIT
QTY PER REEL	1000	PCS
TAPE WIDTH	24	mm
A	330 ± 1	mm
B	100 ± 0.5	mm
C	13 ± 0.5	mm
E	2.2 ± 0.5	mm
W	24 ± 0.5	mm
W1	28.9 ± 0.2	mm

SIZE	DWG. NO.	REV
A	ANT-DB1-nSP250-*	A
SCALE: 4:1	DO NOT SCALE DRAWING	SHEET 2 OF 2