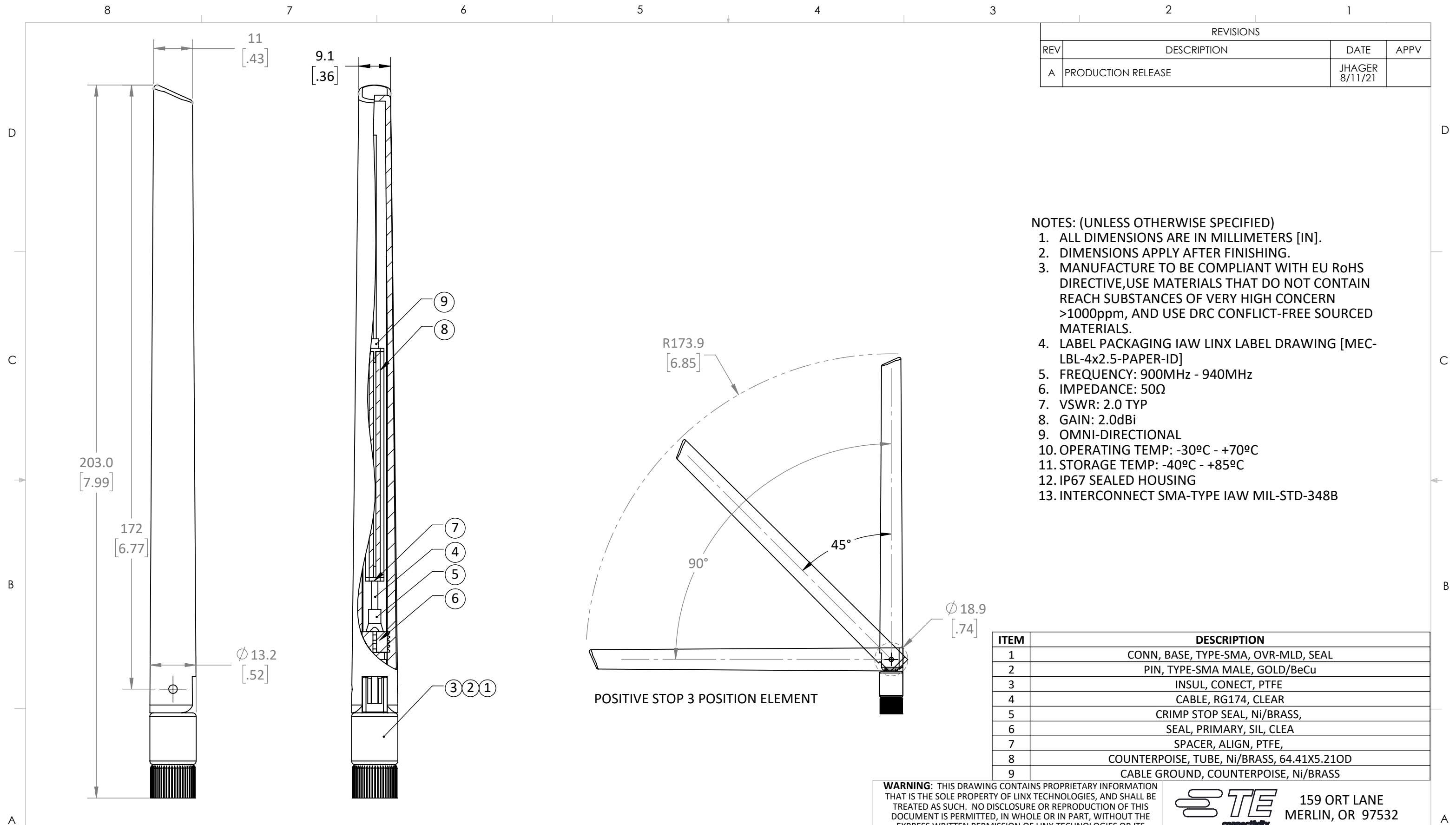


REVISIONS			
REV	DESCRIPTION	DATE	APPV
A	PRODUCTION RELEASE	JHAGER 8/11/21	



- NOTES: (UNLESS OTHERWISE SPECIFIED)
1. ALL DIMENSIONS ARE IN MILLIMETERS [IN].
 2. DIMENSIONS APPLY AFTER FINISHING.
 3. MANUFACTURE TO BE COMPLIANT WITH EU RoHS DIRECTIVE, USE MATERIALS THAT DO NOT CONTAIN REACH SUBSTANCES OF VERY HIGH CONCERN >1000ppm, AND USE DRC CONFLICT-FREE SOURCED MATERIALS.
 4. LABEL PACKAGING IAW LINX LABEL DRAWING [MEC-LBL-4x2.5-PAPER-ID]
 5. FREQUENCY: 900MHz - 940MHz
 6. IMPEDANCE: 50Ω
 7. VSWR: 2.0 TYP
 8. GAIN: 2.0dBi
 9. OMNI-DIRECTIONAL
 10. OPERATING TEMP: -30°C - +70°C
 11. STORAGE TEMP: -40°C - +85°C
 12. IP67 SEALED HOUSING
 13. INTERCONNECT SMA-TYPE IAW MIL-STD-348B

ITEM	DESCRIPTION
1	CONN, BASE, TYPE-SMA, OVR-MLD, SEAL
2	PIN, TYPE-SMA MALE, GOLD/BeCu
3	INSUL, CONECT, PTFE
4	CABLE, RG174, CLEAR
5	CRIMP STOP SEAL, Ni/BRASS,
6	SEAL, PRIMARY, SIL, CLEA
7	SPACER, ALIGN, PTFE,
8	COUNTERPOISE, TUBE, Ni/BRASS, 64.41X5.21OD
9	CABLE GROUND, COUNTERPOISE, Ni/BRASS

WARNING: THIS DRAWING CONTAINS PROPRIETARY INFORMATION THAT IS THE SOLE PROPERTY OF LINX TECHNOLOGIES, AND SHALL BE TREATED AS SUCH. NO DISCLOSURE OR REPRODUCTION OF THIS DOCUMENT IS PERMITTED, IN WHOLE OR IN PART, WITHOUT THE EXPRESS WRITTEN PERMISSION OF LINX TECHNOLOGIES OR ITS DESIGNATED AGENTS.

STE 159 ORT LANE
connectivity MERLIN, OR 97532

MATERIAL: ASA, ABS, PTFE, SIL BRASS	INTERPRET DIMENSIONS AND TOLERANCES PER ASME Y14.5.	PROJECTION:
WEIGHT:	.X ±2.0 .XX ±1.00 .XXX ±.500	ANGLES: ±1° SURFACE:
FINISH: BLACK, NATURAL NICKEL	DRAWN: JHAGER ENGR: DASARATHAN	DT: 8/11/21 DT: 10-JUL-08

PART NUMBER	CONNECTOR
ANT-915-IPW1-SMA	SMA
ANT-915-IPW1-RPS	RP-SMA

TITLE: ANTENNA 868MHz-915MHz IP RATED FOR OUTDOOR USE		REV A
SIZE B	DWG. NO. C-ANT-915-IPW1-CCC	
SCALE: 1:2	DO NOT SCALE DRAWING	SHEET 1 OF 1