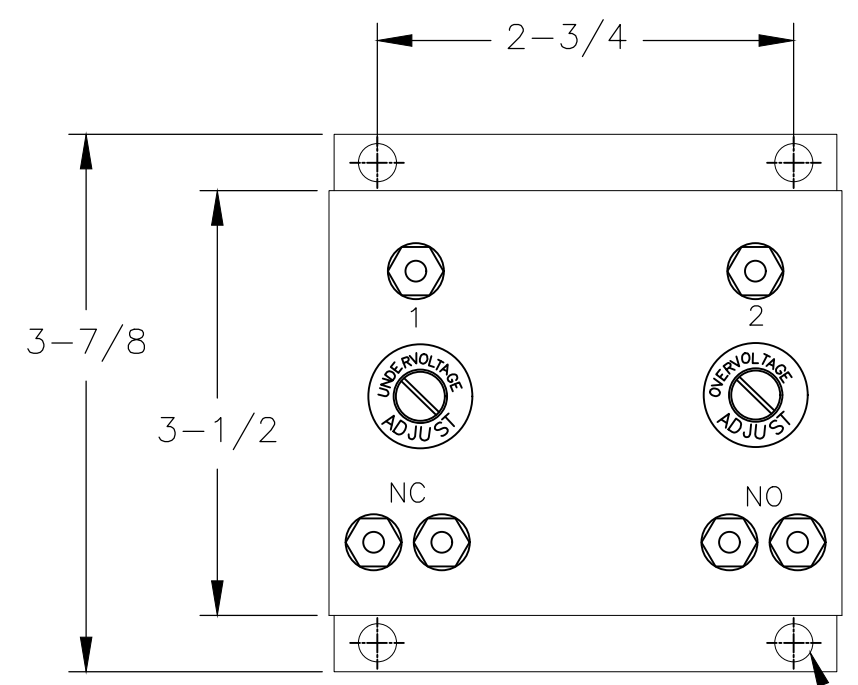
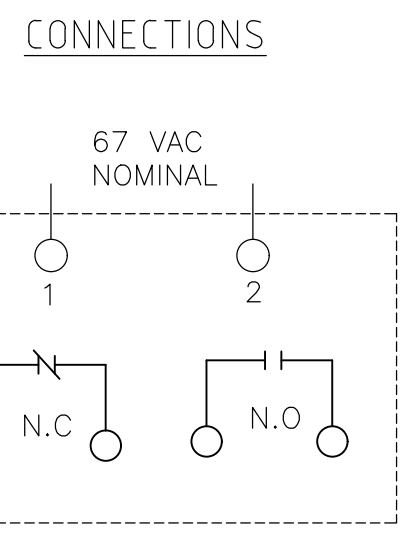
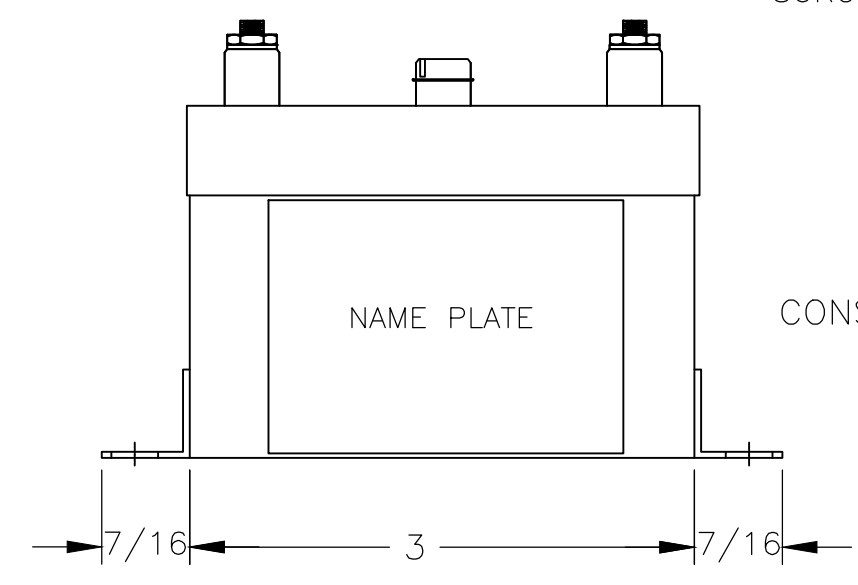
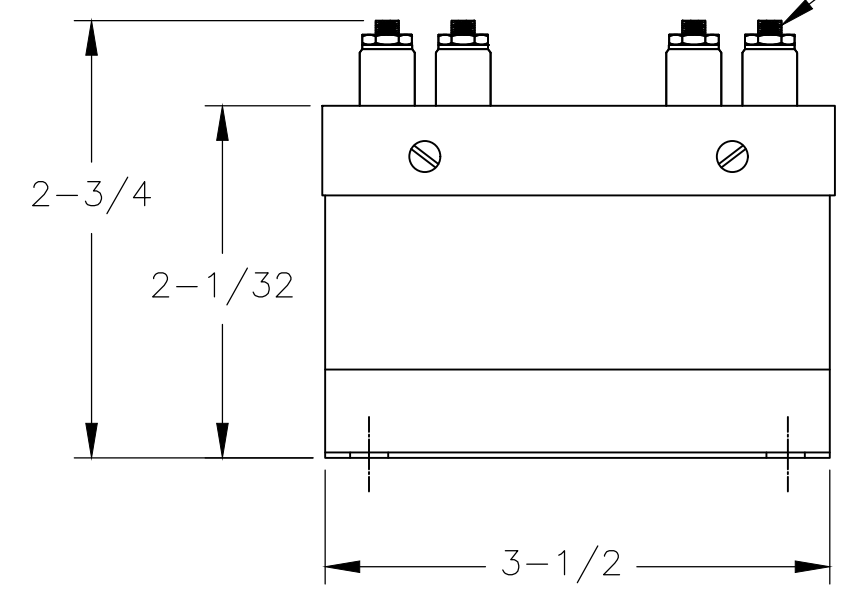


THIS DRAWING IS UNPUBLISHED. RELEASED FOR PUBLICATION  
 © COPYRIGHT - TE Connectivity Ltd. ALL RIGHTS RESERVED.

REVISIONS					
P	LTR	DESCRIPTION	DATE	DWN	APVD
	A	INITIAL DRAWING	09SEP2019	VM	TN



11/64" DIA.  
4 MTG. HOLES  
6-32 TERMINALS(6)



**SPECIFICATIONS**

- NOMINAL VOLTAGE : 67 VOLTS AC
- NOMINAL FREQUENCY : 50-400 Hz.
- UNDERVOLTAGE TRIP : SCREWDRIVER ADJUSTABLE, 30V TO 67V
- OVERVOLTAGE TRIP : SCREWDRIVER ADJUSTABLE, 67V TO 91V
- PICK-UP TO DROP-OUT DIFFERENTIAL : 2 VOLTS MAXIMUM.
- OUTPUT CONTACTS : ONE SET NORMALLY CLOSED (NC) AND ONE SET NORMALLY OPEN (NO).
- CONTACT RATING : 5 AMP RESISTIVE AT 120VAC OR 28VDC

**OPERATION**

- "NC" CONTACTS: OPEN AT NOMINAL VOLTAGE, CLOSE AT OVERVOLTAGE AND UNDERVOLTAGE.
- "NO" CONTACTS: CLOSE AT NOMINAL VOLTAGE, OPEN AT OVERVOLTAGE AND UNDERVOLTAGE.

**SURGE WITHSTAND CAPABILITY**

: WITH A NOMINAL FREQUENCY OF 1.0 TO 1.5 MHz, A CREST VALUE OF 2.5 KV AT THE FIRST HALF CYCLE PEAK, AND AN ENVELOPE DECAYING TO 50% OF THE CREST VALUE OF THE FIRST PEAK IN 10 MICROSECONDS FROM THE START OF THE WAVE.

**CONSTRUCTION**

: SOLID STATE SENSOR WITH RELAY OUTPUT ENCLOSED IN A STEEL BOX WITH A REMOVABLE COVER.

**NOTES:**

- REMOVE SCREWS FOR ACCESS TO THE OVERVOLTAGE AND THE UNDERVOLTAGE TRIP ADJUSTMENTS.
- CLOCKWISE ROTATION OF THE ADJUST, POTENTIOMETERS WILL RAISE THE TRIP POINT.
- THE OVERVOLTAGE TRIP POINT MUST BE SET ABOVE THE UNDERVOLTAGE TRIP SETTING.

ALL DIMENSIONS ARE IN INCHES

THIS DRAWING IS A CONTROLLED DOCUMENT.		DWN VM 09SEP2019	<b>STE</b> TE Connectivity		
DIMENSIONS: INCHES		CHK RV 09SEP2019			
TOLERANCES UNLESS OTHERWISE SPECIFIED:		APVD TN 09SEP2019	NAME 250-14XAC OVER/UNDERVOLTAGE RELAY		
0 PLC ± -		PRODUCT SPEC -	SIZE CAGE CODE DRAWING NO RESTRICTED TO		
1 PLC ± -		APPLICATION SPEC -	A3 - C-250-14XAC-SERIES		
2 PLC ± -		WEIGHT -	SCALE NTS SHEET 1 OF 1 REV A		
3 PLC ± -					
4 PLC ± -					
ANGLES ± -					
FINISH -					
MATERIAL -					
		CUSTOMER DRAWING			