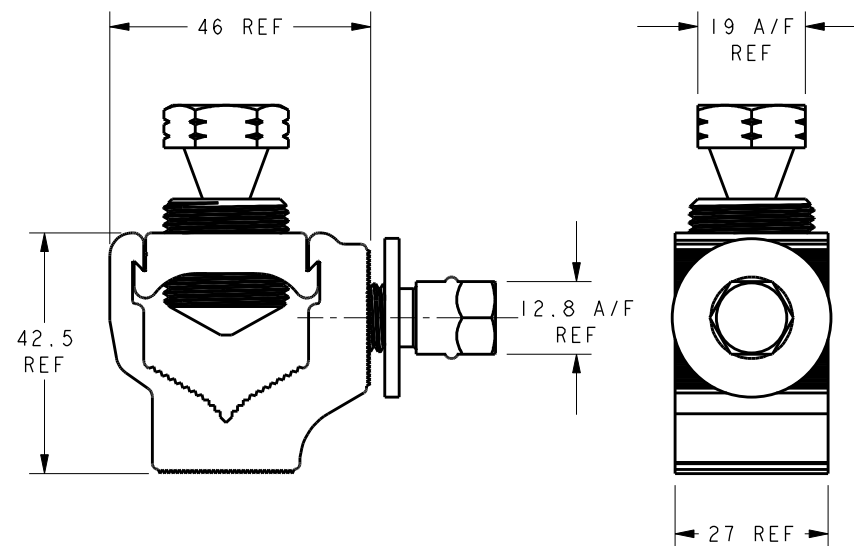


ITEM	PART/DRG NO	DESC	QTY	DESCRIPTION
1	439726-000	BAH-017100023	1	UNIVERSAL 300mm ² TOP INSERT (1xM22)
2	899166-000	BAH-017000062	1	M22x1.5 19 A/F 40.5 LONG ALUMINIUM SINGLE-SHEAR BOLT
3	917462-000	BAH-017060016	1	M12 ZINC PLATED STEEL WASHER - FORM C (2.5mm THICK)
4	EE7739-000	BAH-017000149	1	M12x1.75 12.8 A/F 17.0 LONG ALUMINIUM DOUBLE HEAD SINGLE SHEAR BOLT
5	EE7740-000	BAH-016010086	1	UNIVERSAL END TERMINATION 300mm ² BOTTOM INSERT x 27mm WITH M12 SIDE HOLE
6	EP8716-000	BAH-017120075	1	METRIC 'O'-RING - SIZE SIZE BS4518 0096-24 9.6 I/D x Ø2.4 SECTION - NIITRILE 70



NOTES :

1. FIT 'O'-RING OVER GROOVE ON M12 DOUBLE HEAD SHEAR BOLT
2. PART WEIGHT APPROX = 121.80g



Material	VARIES
Finish	VARIES
Tolerances (UOS)	-
B&H Short Desc	LVMOD/037

Part Description	- IF IN DOUBT ASK - DO NOT SCALE -
300mm ² UNIVERSAL END TERMINATION x 27mm WITH M12 SIDE HOLE & DOUBLE HEAD SINGLE-SHEAR BOLT - UET300-27/SM12/DBL	

B	ECR-20-015198: CHANGE 'O'-RING REF TO ADAPT ON BOLT HEX HEAD	GC-00019	26/10/20
A	FIRST ISSUE (WAS D155-025 REV X1)	BH-00846	08/01/13
Revision	Description	Name/DMR	Date
Design/Drawn	D M EATON	Date	12-Sep-12
Scale (UOS)	3:4		
TCPN	EE7525-000	Part Weight	
Drawing/Part No	BAH-036010085	Drawing Type	ASSEMBLY/CUSTOMER
Rev	B		

REMOVE ALL BURRS AND SHARP EDGES - SURFACES TO BE FREE FROM SCRATCHES AND DEFECTS - ALL THREADS TO BS3643 PT 2

© 2017 TYCO ELECTRONICS UK LTD, WITHAM, UK