

DETAIL A  
SCALE 3:4

DETAIL D  
SCALE 3:4

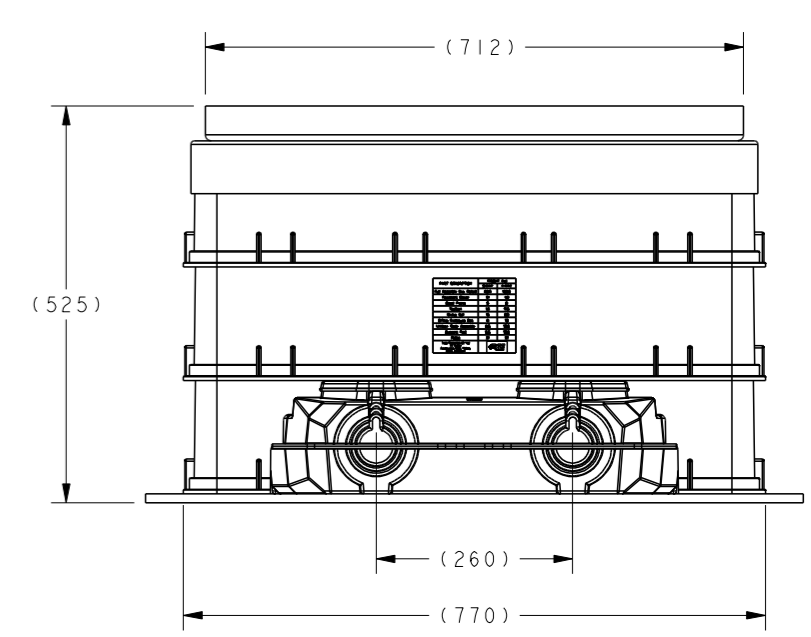
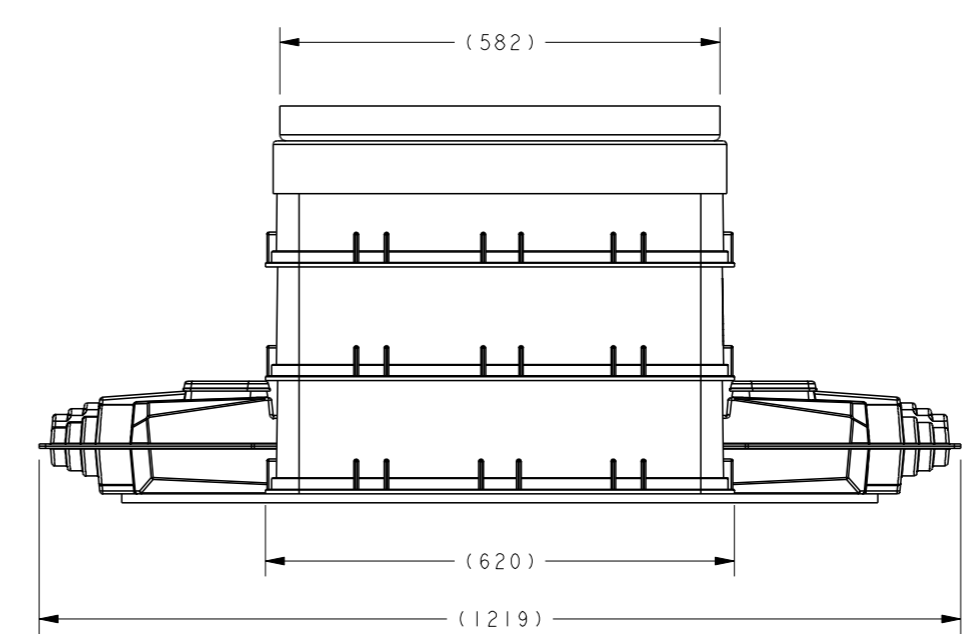
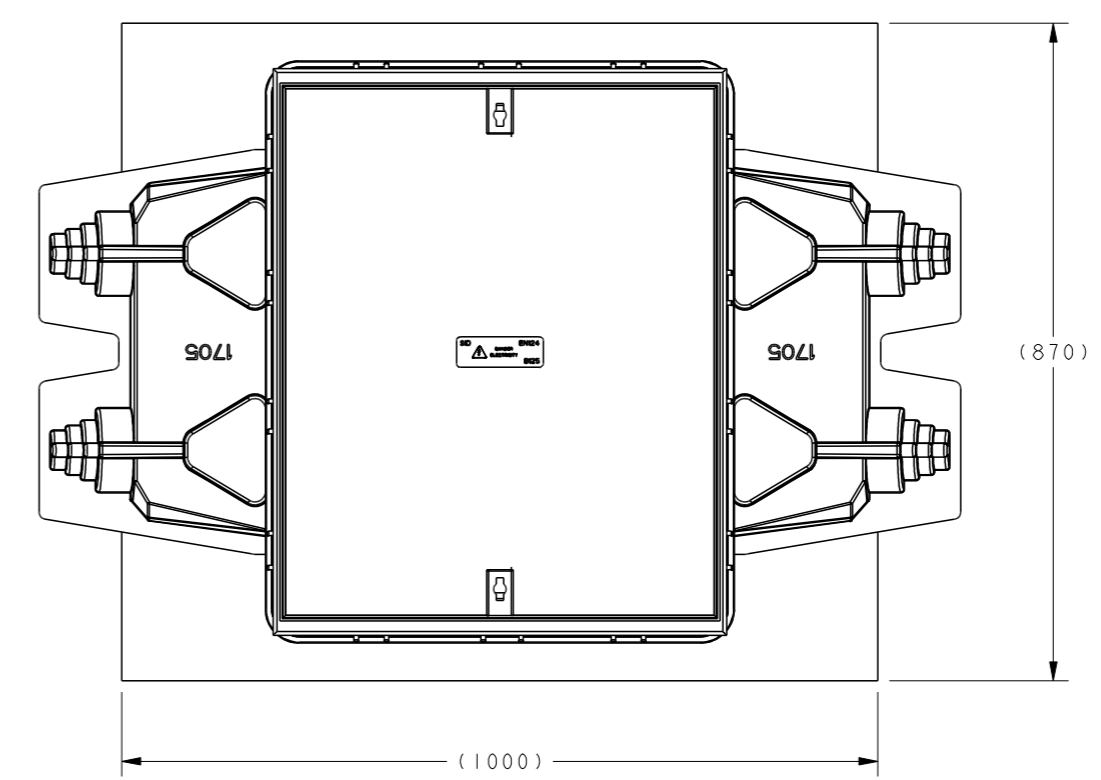
DETAIL B  
SCALE 3:4

ITEM	PART/DRG NO	QTY	DESCRIPTION
1	01-703-0050	4	M8 x 25 LONG SOCKET HEAD CAP SCREW - STEEL
2	01-712-0013	2	BRIDGE HANDLE PLAIN BORE - M8 x 132 CRS
3	01-803-0016	4	ENGRAVING LABEL - WHITE/BLACK/WHITE - 80x35mm
4	01-807-0374	1	LINK BOX ENCLOSURE COVER 4-WAY (MK2 & MK3 LINKBOX)
5	01-807-0434	1	4-WAY LINK BOX ENCLOSURE SET - MK2 & MK3 LINKBOX (UR6045TMB)
6	01-811-0003	1	DIVING BELL LID 4-WAY (MK2 LINK BOX)
7	01-811-0057	4	UPPER HOUSING CUT-OUT COVER - MULTICABLE (MK2 LINK BOX)
8	02-803-0080	12	82.5mm WEDGE LINK
9	BAH-017120073	2	SELF TAPPER SCREW - No 8 x 1/2" FLANGE HEAD PZ #2 ZINC PLATED
10	BAH-018070609	1	RECYCLED LDPE 4 WAY LINKBOX BASE PAD FOR 1705 SHELL : 870mm x 1000mm x 12mm THICK
11	BAH-018070638	1	ENGRAVING LAMINATE TAG 80mm x 80mm x 1.5mm - WHITE ON BLACK
12	BAH-018070641	1	MK4 LINKBOX WEIGHT LABEL FOR 2-WAY & 4-WAY
13	BAH-018110104	12	INJECTION MOULDED TERMINAL COVER LID ( MK2 & MK3 LINKBOX )
14	BAH-018110194	8	LABEL - YELLOW / BLACK - 145 x 15 x 0.06mm 'MINIMUM RESIN FILL LEVEL'
15	BAH-018110256	4	UNIVERSAL PHASE HOUSING FOR LINKBOX
16	BAH-028110282	1	4-WAY 4-CORE ENHANCED UNTAILED LINKBOX BODY BUILD - MK4
17	BAH-038110286	1	4-WAY 4-CORE ENHANCED LINKBOX INSTALLATION TOOLBOX KIT - MK4 STANDARD
18	BAH-170400089	2	BLACK REFUSE SACK : 18" x 29" x 39" x 200 GAUGE

SEE NOTE 3 ↔  
SEE NOTE 4 ↔  
  
SEE NOTE 1 ↔  
SEE NOTE 2 ↔

PART DESCRIPTION	2-WAY	4-WAY
Full Assembly (inc. Pallet)	83.5	163.5
Pavement Cover	21	49
Steel Frame	6	9
Toolbox	15	2.5
Diving Bell	15	19
3-Ring Enclosure Set	8	19.5
Linkbox Body Assembly	6.5	10.5
Support Pad	5.5	21
Pallet	21	

TE Connectivity  
Tyco Electronics UK Ltd  
TE Energy Division  
Preston Road, Winton,  
Essex, CM8 3AH



- NOTES :
- RESIN LEVEL LABELS (x8) ARE TO BE STUCK TO PHASE HOUSINGS AS SHOWN (DETAIL D).
  - PHASE HOUSINGS (x4) ARE NOT TO BE PUSHED ONTO TERMINAL SPIGOTS.
  - ENGRAVING TAG (x1) IS TO BE SCREWED TO TOP ENCLOSURE RING AS SHOWN (DETAIL A).
  - WEIGHT LABEL (x1) IS TO BE STUCK TO MIDDLE ENCLOSURE RING AS SHOWN (DETAIL B).



Material	VARIABLES	Part Description	IF IN DOUBT ASK - DO NOT SCALE
Finish	VARIABLES	4-WAY 3-CORE ENHANCED UNTAILED LINKBOX - MK4 STANDARD	
Tolerances (UOS)	N/A		
BGH Short Desc	1705E/3C		

Revision	Description	Name/DMR	Date
C	BAH-018070640 (x1) REMOVED AND NOTE 5 REMOVED	BH-01965	03/08/20
B	BAH-018070379 (x1) REMOVED, BAH-018070442 (x1) REMOVED & REPLACED WITH BAH-018070374 (x1) & BAH-017120073 (x2), BAH-018070638 (x1), BAH-018070640 (x1), BAH-018070641 (x1) ADDED	BH-01945	12/02/20
A	FIRST ISSUE	BH-01261	12/03/18
Design/Drawn	D M EATON	Date	12-Mar-18
Scale	1:10	Part Weight	1425 kg
TCFN	EN3417-000	Drawing type	CUSTOMER
Drawing/Part No.	BAH-028110283	Rev	C