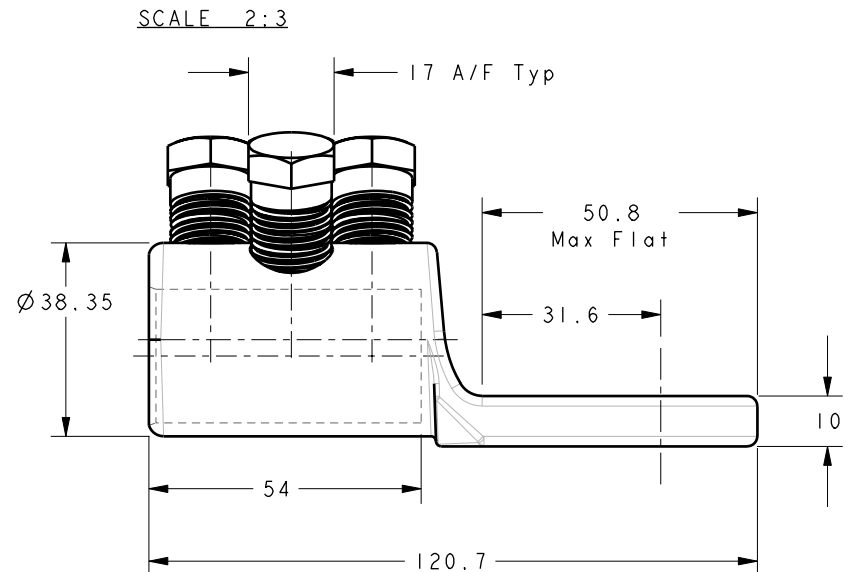
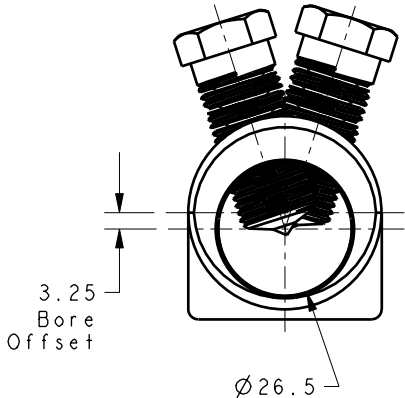
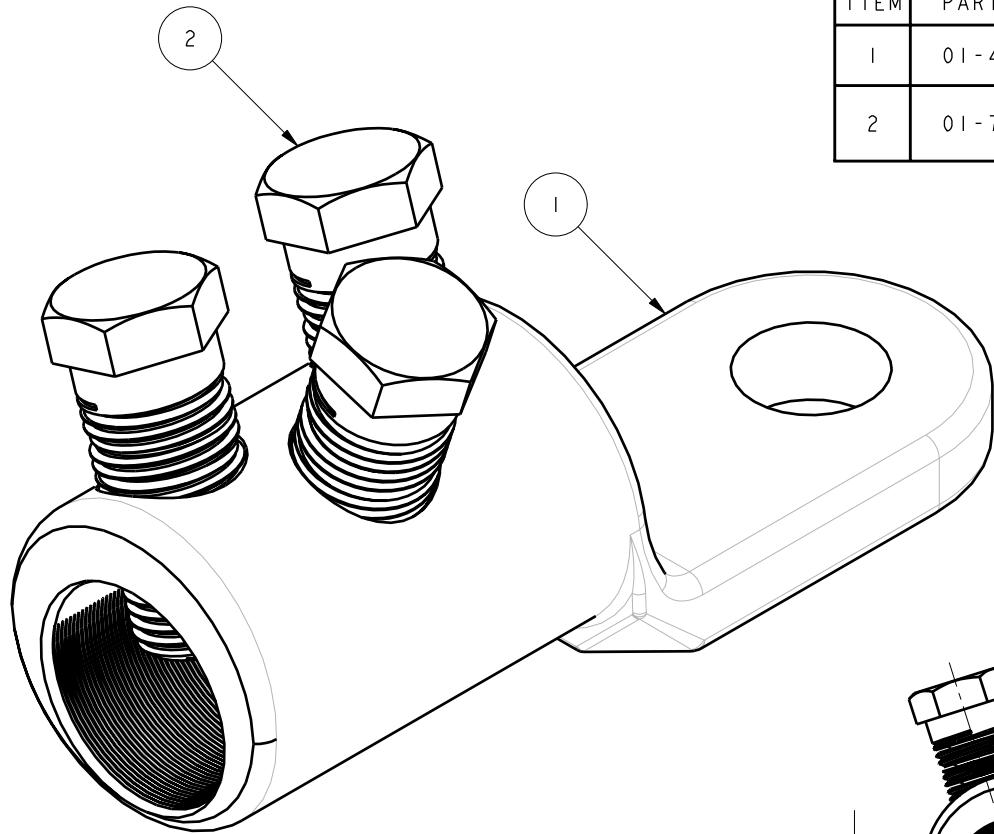


ITEM	PART/DRG NO	QTY	DESCRIPTION
1	01-403-0139	1	MV BRASS END TERMINATION BODY - 38.35 O/D 26.5 I/D OFFSET PALM WITH Ø17.0 HOLE - BODY
2	01-701-0039	3	M16x1.5 17 A/F 44.25 LONG BRASS MULTI-SHEAR BOLT WITH SPECIAL TIP FOR DE-SOLDERED CONDUCTOR



- NOTES :
- COMPONENT TO BE ASSEMBLED AS SHOWN AND PACKED IN A POLYTHENE BAG.
  - PACK IN STURDY CARDBOARD BOXES IN LAYERS. USE CARDBOARD TO DIVIDE THE LAYERS AND FILL ANY SPACE WITH PACKING PAPER.

B	NOTES 1 AND 2 ADDED		BH-00161	19/05/06
A	FIRST ISSUE		S.P.W	15.5.03
Revision	Description		Name/DMR	Date
Design/Drawn	S.P.WEST	Date. 16-Sep-03	Scale (UOS) 5:4	 A 4
PCN/RPN No	A95464-000	Checked/Approved by		
Drawing/Part No.	02-403-0140	Drawing type		Revision
		ASSEMBLY/CUSTOMER		B

**tyco**  
**Electronics**  
**(B&H)**

Tyco Electronics UK Ltd  
Freebournes Road, Witham  
Essex, CM8 3AH, UK.  
Tel: +44 1376 509509  
Fax: +44 1376 509511  
<http://energy.tycoelectronics.com>

Material	VARIES
Finish	VARIES
Tolerances (UOS)	-
B&H Short Desc.	VETB26-DS-16/OP-UTB

IF IN DOUBT ASK - DO NOT SCALE

Part Description  
MV BRASS END TERMINATION  
- 38.35 O/D 26.5 I/D OFFSET PALM  
WITH Ø17.0 HOLE - ASSEMBLY