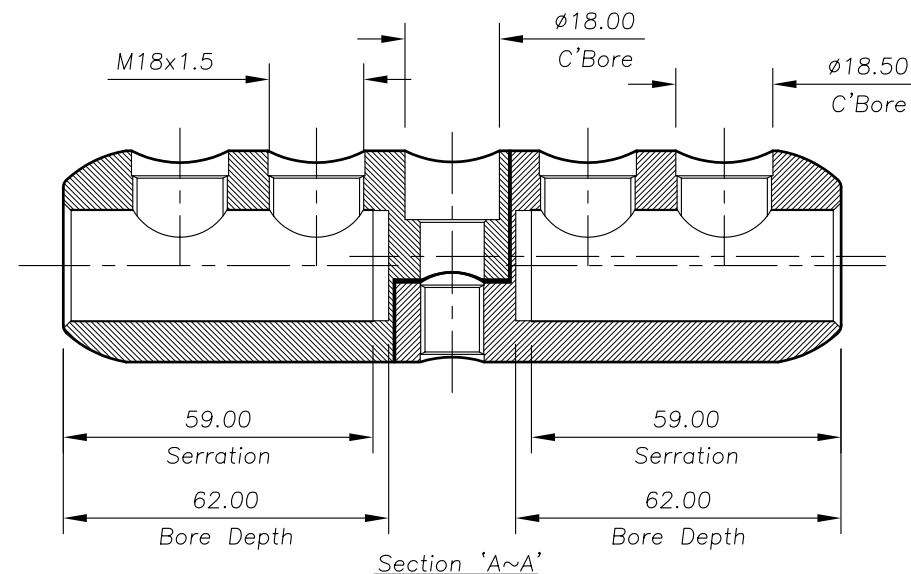
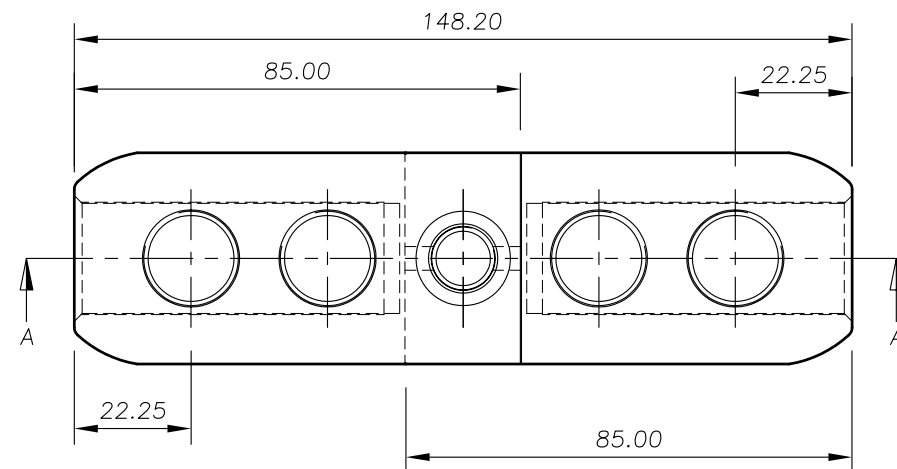
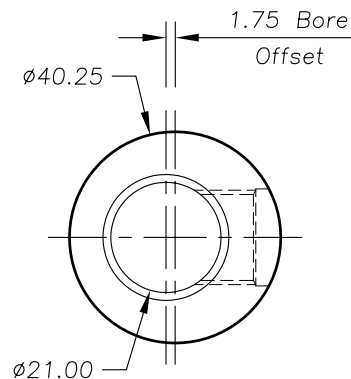
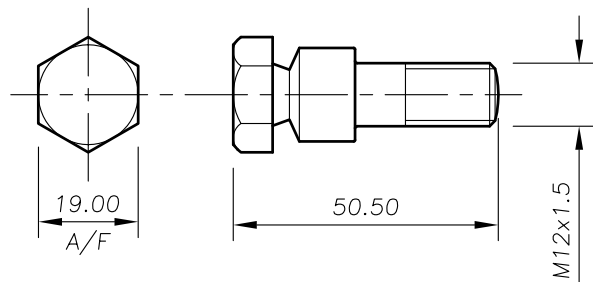


M18 Conductor Clamping Bolt



Connector Body



Connector Mid-Bolt

PART/DRG NO.	QTY.	DESCRIPTION
01-211-0084	1	33kV BRASS STRAIGHT VEE TYPE CONNECTOR BODY 40.25 O/D 21.0 I/D (TAPERED ENDED) - THREADED HALF
01-211-0083	1	33kV BRASS STRAIGHT VEE TYPE CONNECTOR BODY 40.25 O/D 21.0 I/D (TAPERED ENDED) - COUNTERBORED HALF
01-702-0014	1	M12x1.5 19 A/F 50.5 LONG MILD STEEL MID-BOLT
01-701-0010	4	M18x1.5 19 A/F 41.0 LONG BRASS MULTI-SHEAR BOLT

G	MID-BOLT MATERIAL REVISED, WAS BRASS	S.P.W	12.6.02
F	MID-BOLT MATERIAL REVISED, WAS MILD STEEL	S.P.W	12.6.02
E	PART No WAS VTPB21UTB, DRG No WAS S17-B02-A01	S.P.W	18.1.02
D	MID-BOLT REVISED	S.P.W	30.1.01
C	CONNECTOR BODY & ASSY PART No'S REVISED	S.P.W	24.8.00
B	REDRAWN, O/D REVISED, DRG No WAS 0142-AS1	S.P.W	28.3.00
A	FIRST ISSUE	E.T	6.3.98
Revision	Description	Name	Date

Issued to:	Commercial	Quality	Stores	Production	IF IN DOUBT ASK! - DO NOT SCALE
tyco Electronics	Tyco Electronics UK Ltd Aldridge Site Middlemore Lane West Aldridge West Midlands WS9 8EA Phone:+44(0)1922 743993 Fax:+44(0)1922 744150	Material VARIES Finish VARIES Tolerances (UOS) - B&H Short Desc. VTPB21UTB	Part Description 33kV BRASS STRAIGHT VEE TYPE CONNECTOR 40.25 O/D 21.0 I/D (TAPERED ENDED) (RAYCHEM REF: MSFE-0016-0185)		

Design/Drawn	S.P.WEST	Date	28 MAR 2000	Scale	1:1.5	THIRD ANGLE PROJECTION	A4
Checked by		Approved by		Drawing/Part No.	02-211-0046	Drawing Type	ASSEMBLY
						Revision.	G