

THIS DRAWING IS UNPUBLISHED.  
 VERTRÄULICHE UNVERÖFFENTLICHTE ZEICHNUNG  
 © COPYRIGHT 2012 TE CONNECTIVITY

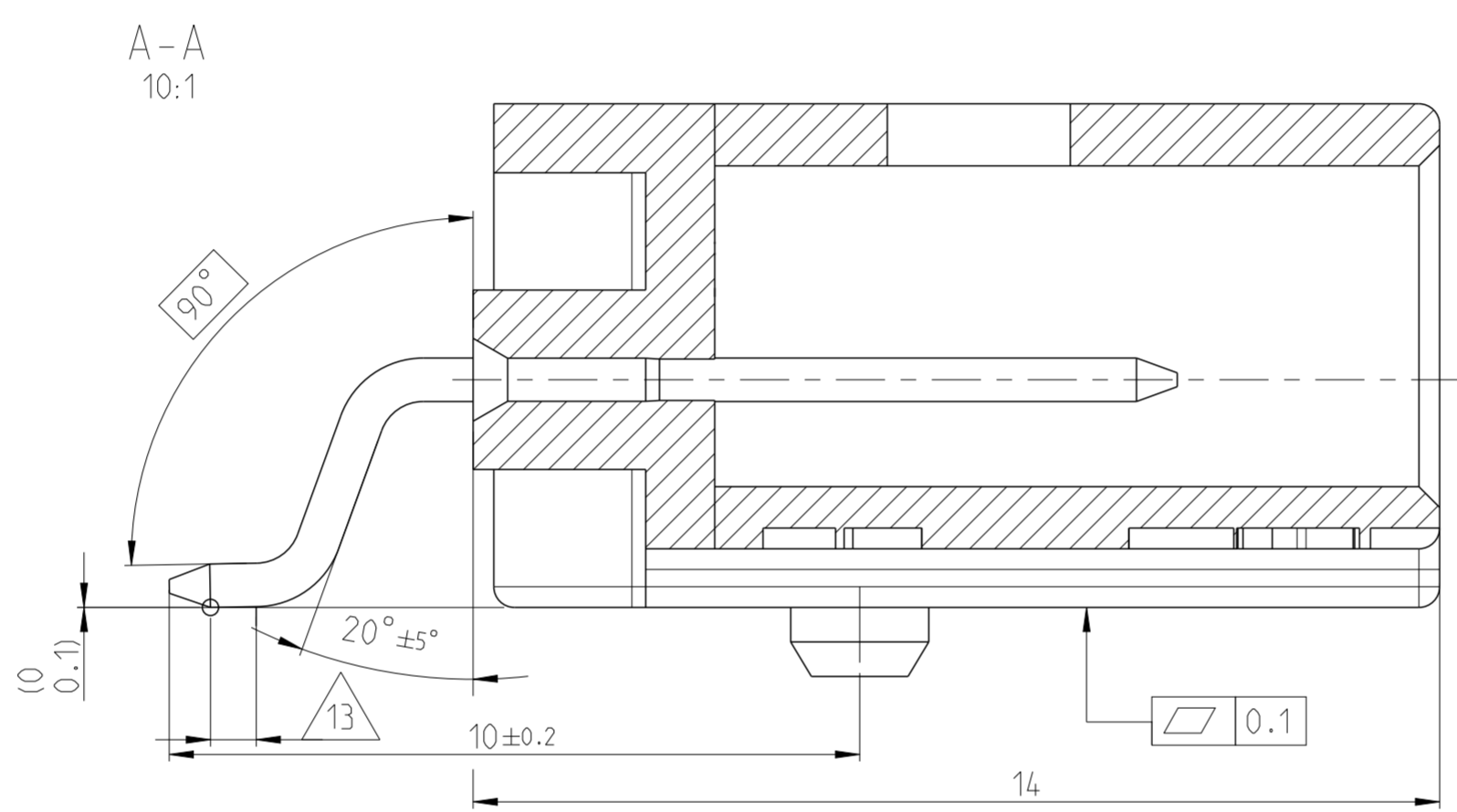
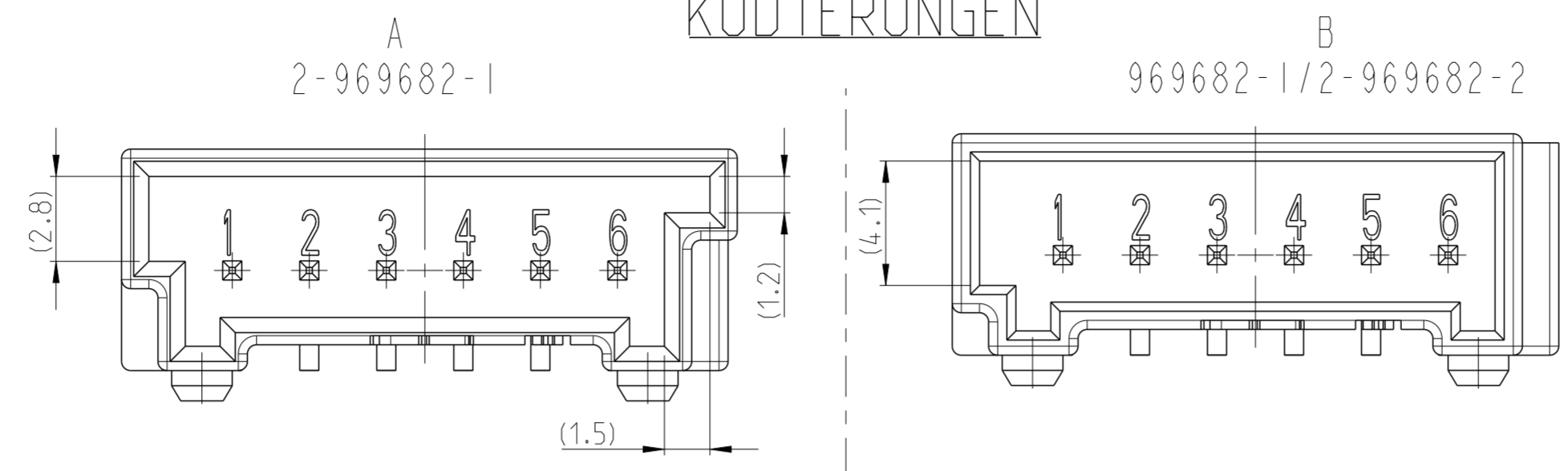
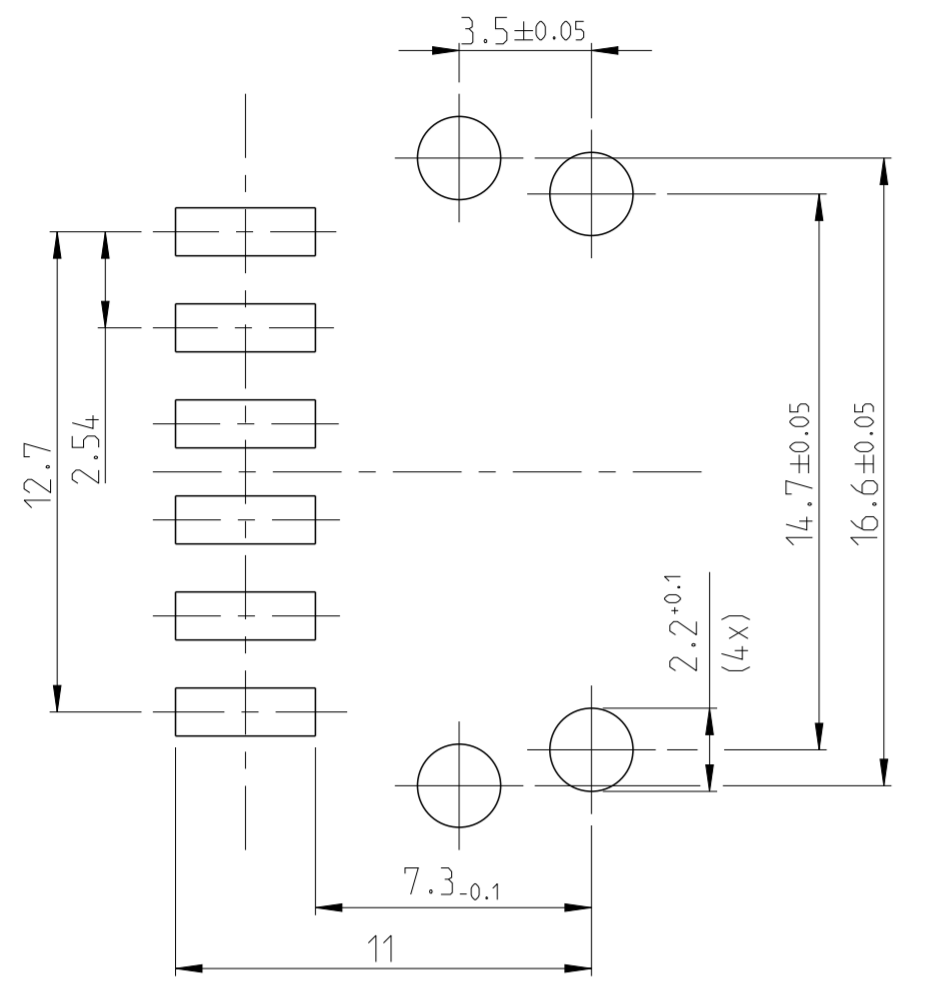
RELEASED FOR PUBLICATION  
 FREI FÜR VERÖFFENTLICHUNG  
 2012  
 ALL RIGHTS RESERVED.  
 ALLE RECHTE VORBEHALTEN.

MATED WITH:  
 PASSEND ZU:  
 968359

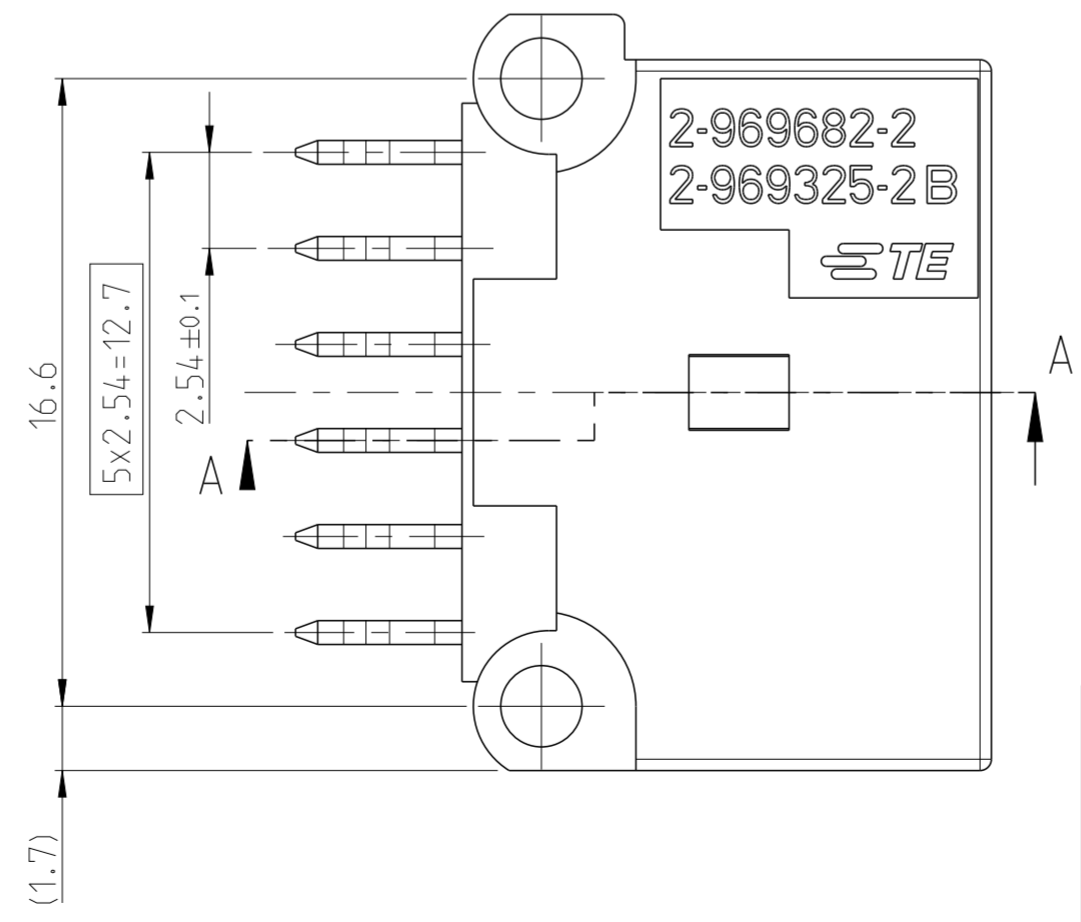
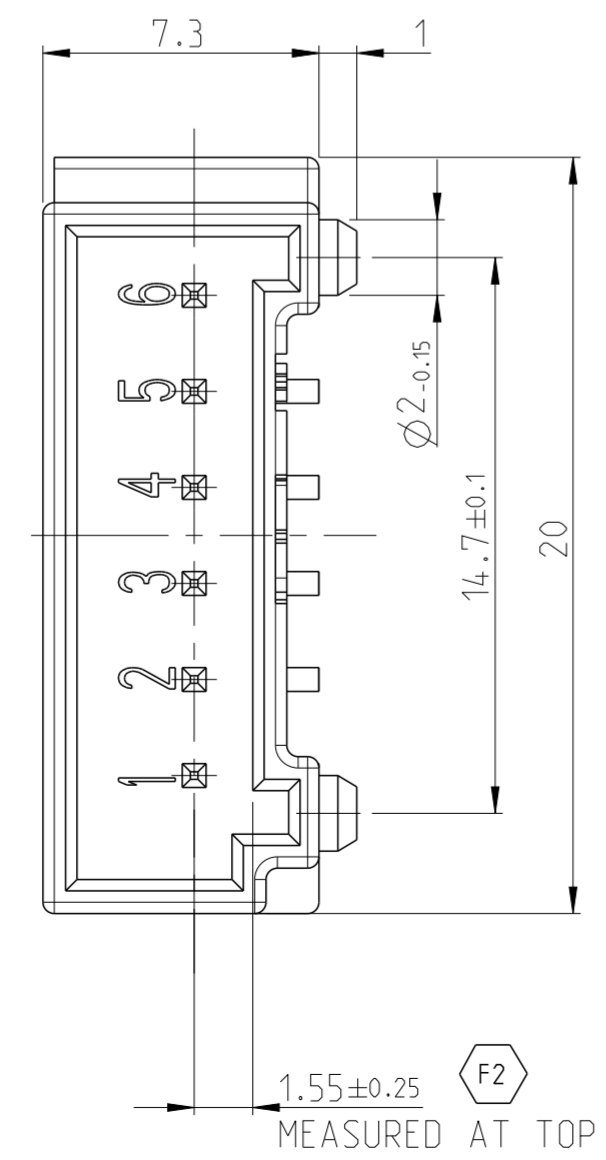
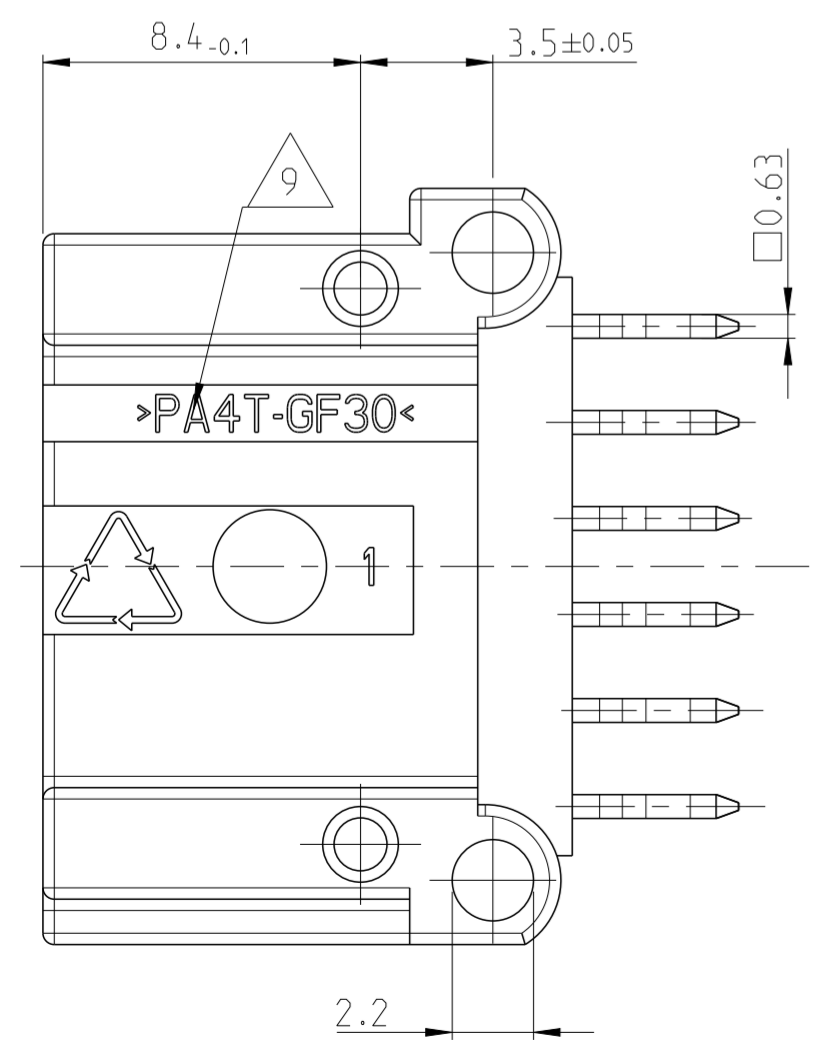
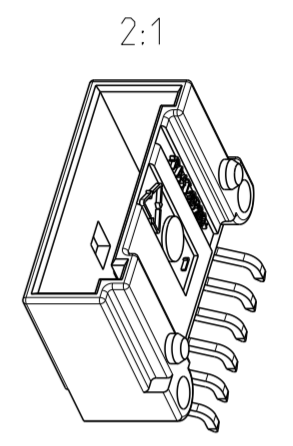
CODINGS  
 KODIERUNGEN

LOC	DIST	REVISIONS			
P	LTR	DESCRIPTION	DATE	DWN	APVD
A1	-	PROJEKT NR.: PRJ-12-00000697 PRJ-20-000900763			
E6		ECR-14-004199	03NOV2014	AB	BF
F		ECR-20-010563	24 JUL2020	KG	NL
F1		ECR-20-012976	14SEP2020	KG	NL
F2		ECR-20-015436	29OCT2020	RM	LN

RECOMMENDED PCB - LAYOUT  
 EMPFOHLENES LEITERPLATTEN - LAYOUT



NOTES:  
 BEMERKUNG:  
 SEE PAGE 2



CODE "B" AS SHOWN  
 Kodung "B" dargestellt

TE ORDER NR.	REV	CODE	POS.	DESCRIPTION Benennung	SURFACE/COLOUR Oberflaeche/Farbe	MATERIAL
2-969682-2	D	B	6	BLISTER BELT	BLACK	PS
			5	COVER TAPE	TRANSPARENT	PET
			4	REEL Ø330/100x38.4	GREY	PS
			2	MQS CONTACT PIN	△4/5	CuFe2
2-969682-1	D	A	6	BLISTER BELT	BLACK	PS
			5	COVER TAPE	TRANSPARENT	PET
			4	REEL Ø330/100x38.4	GREY	PS
969682-1	E	B	2	MQS CONTACT PIN	△4/5	CuFe2
			1	6POS MQS PIN HEADER HSG	BLACK	PA4T-GF30
			6	BLISTER BELT	BLACK	PS
			5	COVER TAPE	TRANSPARENT	PET
			4	REEL Ø330/100x38.4	GREY	PS
969682-1	E	B	3	SCREW Ø2	ELECTROPLATED	STEEL
			2	MQS CONTACT PIN	△4/5	CuFe2
			1	6POS MQS PIN HEADER HSG	BLACK	PCT-GF20

THIS DRAWING IS A CONTROLLED DOCUMENT.

DWN: E. WERNER 25MAR1997  
 CHK: H. SCHERER 25MAR1997  
 APVD: G. FELDMEIER 27MAR1997

TE CONNECTIVITY

NAME: MQS PIN HEADER, 6 POS., SMD, ASSY  
 MQS-STIFTWANNE, 6 POL., SMD, ASSY

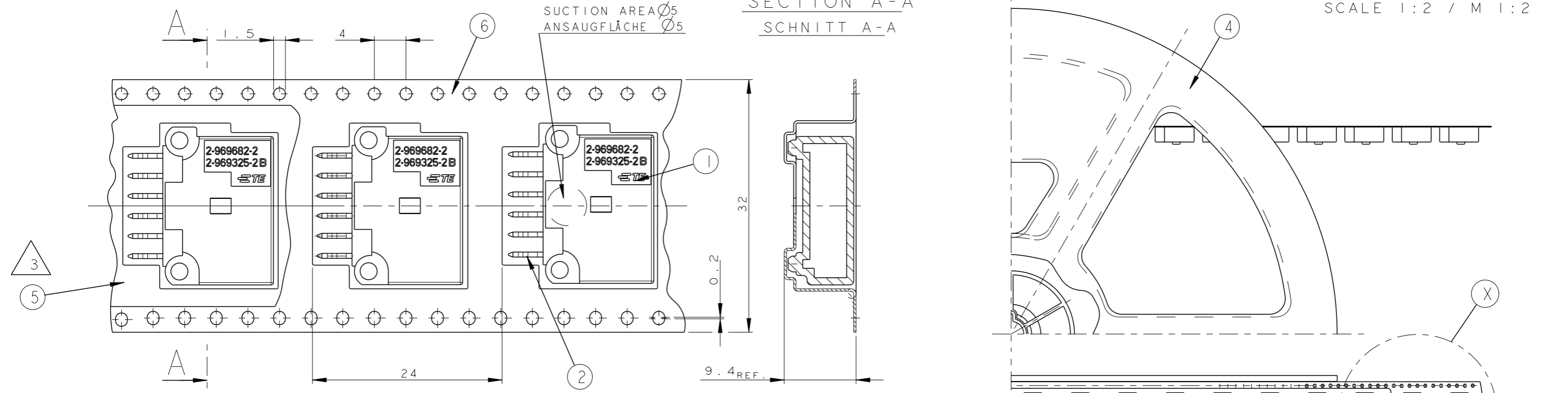
SIZE: A2 CAGE CODE: 00779 DRAWING NO: 969682

SCALE: 1:1 SHEET: 1 OF 2 REV: F2

DETAIL "X"  
EINZELHEIT "X"

SECTION A-A  
SCHNITT A-A

SCALE 1:2 / M 1:2



- 1 POS-NO. 3 NOT SHOWN
- 2 DIRECTION OFF TOP OF REEL
- 3 BLISTER BELT SEALED WITH COVER TAPE
- 4 3-7 μm Sn POST-TINNED ON SOLDER SIDE
- 5 1-3 μm REFLOW-TIN OVER 1.3-2.2 μm Ni ON MATING SIDE (PIN TOPS BRIGHT)
- 6 FIRST AND LAST RUNNING PER DIN/IEC 286 PART 3
- 7 BLISTER BELT, COVER TAPE AND REEL PER DIN/IEC 286 PART 3
- 8 PACKING UNIT: 300 MOS PIN HEADERS PER REEL
- 9 MATERIAL IDENTIFICATION FOR 2-...-1 AND 2-...-2: PA4T-GF30  
MATERIAL IDENTIFICATION FOR ...-1: PCT-GF20
- 10 MATING PART SEE DRW 1355899, BMW RESTRICTED
- 11 NEW TOOLING, DELIVERED WITHOUT SCREW
- 12 PIN RETENTION FORCE >25N WITH FEED RATE 25mm/min
- 13 MEASURING AREA FOR COPLANARITY
- 14 SPEC. 114-94201 IS PART OF THIS DRWG. SPEC

- 1 POS-NR. 3 NICHT DARGESTELLT
- 2 ABWICKELRICHTUNG
- 3 BLISTERGURT MIT ABDECKBAND VERSCHLOSSEN
- 4 3-7 μm Sn NACHVERZINNT AUF LOETSEITE
- 5 1-3 μm REFLOW Sn UEBER 1.3-2.2 μm Ni AUF STECKSEITE (STIFTSPITZEN BLANK)
- 6 VOR- UND NACHLAUF NACH DIN/IEC 286 TEIL 3
- 7 BLISTERGURT, ABDECKBAND UND SPULE NACH DIN/IEC 286 TEIL 3
- 8 VERPACKUNGSEINHEIT: 300 MOS-STIFTWANNEN PRO SPULE
- 9 MATERIAL IDENTIFIKATION FUER 2-...-1 UND 2-...-2: PA4T-GF30  
MATERIAL IDENTIFIKATION FUER ...-1: PCT-GF20
- 10 GEGENSTECKER SIEHE DRW 1355899, BMW RESTRICTED
- 11 NEUES WERKZEUG, AUSGELIEFERT OHNE SCHRAUBE
- 12 KONTAKTAUSDRUECKKRAFT >25N MIT VORSCHUB 25MM/MIN
- 13 Messbereich fuer Koplanaritaetsmessung
- 14 Spezifikation 114-94201 ist Bestandteil dieser Zeichnung

THIS DRAWING IS A CONTROLLED DOCUMENT.		DWN E. WERNER 25MAR1997			MOS PIN HEADER, PACKED IN BLISTER BELT MOS STIFTWANNE, IN BLISTERGURT VERPACKT	
		CHK H. SCHERER 25MAR1997				
		APVD G. FELDMEIER 27MAR1997	NAME			
		PRODUCT SPEC	APPLICATION SPEC		SIZE	CAGE CODE
					00779	C-969682
		WEIGHT			RESTRICTED TO NUR FUER	
		CUSTOMER DRAWING		SCALE	SHEET	REV
				1:1	2 OF 2	F2

TOLERANCES UNLESS OTHERWISE SPECIFIED:	
0 PLC	± 0.2
1 PLC	± 0.2
2 PLC	± -
3 PLC	± -
4 PLC	± -
ANGLES/WINKEL	± -
FINISH/OBERFLAECHE/FARBE	