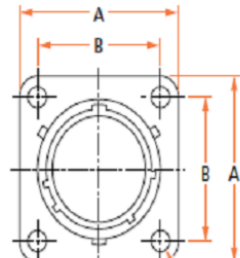
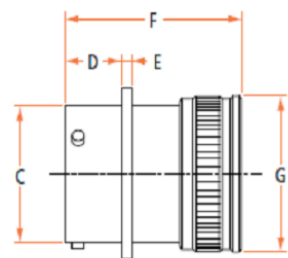


SQUARE FLANGE RECEPTACLE

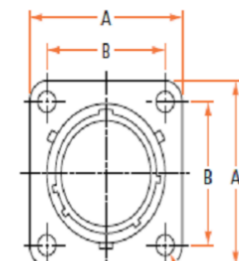
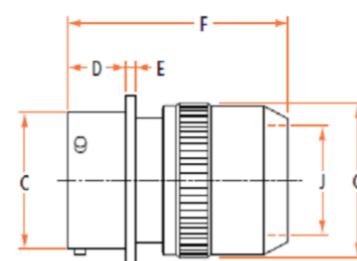
TYPE 00 R
00 E



4 holes $\varnothing 3.15 \pm 0.15$ sizes 8 to 22
4 holes $\varnothing 3.73 \pm 0.15$ size 24

SQUARE FLANGE RECEPTACLE WITH POTTING CUP

TYPE 00 RP
00 P



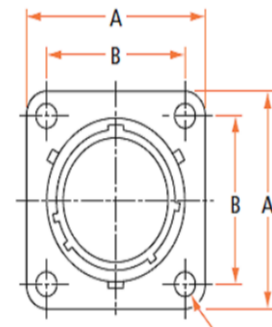
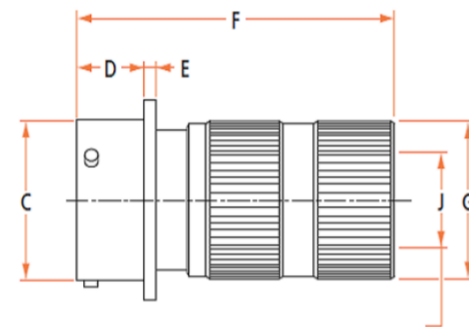
4 holes $\varnothing 3.15 \pm 0.15$ sizes 8 to 22
4 holes $\varnothing 3.73 \pm 0.15$ size 24

Crimp type Part-number	A max.	B ± 0.1	C max.	D ± 0.15	E max.	F max.	G max.	Solder type Part-number
951-00 R 8-** P/S 50	21.10	15.08	12.03	11.13	1.45	31.2	15.50	951-00 E 8-** P/S 50
951-00 R 10-** P/S 50	24.35	18.26	15.01	11.13	1.45	31.2	18.70	951-00 E 10-** P/S 50
951-00 R 12-** P/S 50	26.70	20.62	19.07	11.13	1.45	31.2	21.80	951-00 E 12-** P/S 50
951-00 R 14-** P/S 50	29.05	23.02	22.24	11.13	1.45	31.2	25.00	951-00 E 14-** P/S 50
951-00 R 16-** P/S 50	31.30	24.58	25.42	11.13	1.45	31.2	28.20	951-00 E 16-** P/S 50
951-00 R 18-** P/S 50	33.70	26.98	28.60	11.13	1.45	31.2	30.25	951-00 E 18-** P/S 50
951-00 R 20-** P/S 50	36.85	29.36	31.77	14.30	2.25	31.1	33.55	951-00 E 20-** P/S 50
951-00 R 22-** P/S 50	39.95	31.76	34.94	14.30	2.25	31.1	36.85	951-00 E 22-** P/S 50
951-00 R 24-** P/S 50	43.15	34.92	38.12	15.10	2.25	31.1	40.50	951-00 E 24-** P/S 50

Crimp type Part-number	A max.	B ± 0.1	C max.	D ± 0.15	E max.	F max.	G max.	J min.	Solder type Part-number
951-00 RP 8-** P/S 50	21.10	15.08	12.03	11.13	1.45	39.85	15.40	7.95	951-00 P 8-** P/S 50
951-00 RP 10-** P/S 50	24.35	18.26	15.01	11.13	1.45	39.85	18.60	11.05	951-00 P 10-** P/S 50
951-00 RP 12-** P/S 50	26.70	20.62	19.07	11.13	1.45	39.85	21.45	14.15	951-00 P 12-** P/S 50
951-00 RP 14-** P/S 50	29.05	23.02	22.24	11.13	1.45	45.35	24.70	17.40	951-00 P 14-** P/S 50
951-00 RP 16-** P/S 50	31.30	24.58	25.42	11.13	1.45	45.35	27.90	20.55	951-00 P 16-** P/S 50
951-00 RP 18-** P/S 50	33.70	26.98	28.60	11.13	1.45	45.35	29.85	23.00	951-00 P 18-** P/S 50
951-00 RP 20-** P/S 50	36.85	29.36	31.77	14.30	2.25	47.20	33.15	25.95	951-00 P 20-** P/S 50
951-00 RP 22-** P/S 50	39.95	31.76	34.94	14.30	2.25	47.20	36.45	29.10	951-00 P 22-** P/S 50
951-00 RP 24-** P/S 50	43.15	34.92	38.12	15.10	2.25	47.20	40.00	32.55	951-00 P 24-** P/S 50

SQUARE FLANGE RECEPTACLE WITH WATERTIGHT CABLE CLAMP

TYPE 00 RJ
00 J



\varnothing allowed cable

4 holes $\varnothing 3.15 \pm 0.15$ sizes 8 to 22
4 holes $\varnothing 3.73 \pm 0.15$ size 24

Crimp type Part-number	A max.	B ± 0.1	C max.	D ± 0.15	E max.	F max.	G max.	J ± 0.4	Solder type Part-number
951-00 RJ 8-** P/S 50	21.10	15.08	12.03	11.13	1.45	47.6	15.40	5.44	951-00 J 8-** P/S 50
951-00 RJ 10-** P/S 50	24.35	18.26	15.01	11.13	1.45	47.6	18.60	6.35	951-00 J 10-** P/S 50
951-00 RJ 12-** P/S 50	26.70	20.62	19.07	11.13	1.45	47.6	21.45	9.75	951-00 J 12-** P/S 50
951-00 RJ 14-** P/S 50	29.05	23.02	22.24	11.13	1.45	52	24.70	11.73	951-00 J 14-** P/S 50
951-00 RJ 16-** P/S 50	31.30	24.58	25.42	11.13	1.45	58	27.90	15.14	951-00 J 16-** P/S 50
951-00 RJ 18-** P/S 50	33.70	26.98	28.60	11.13	1.45	63.5	29.85	16.41	951-00 J 18-** P/S 50
951-00 RJ 20-** P/S 50	36.85	29.36	31.77	14.30	2.25	75.2	33.15	17.30	951-00 J 20-** P/S 50
951-00 RJ 22-** P/S 50	39.95	31.76	34.94	14.30	2.25	79.1	36.45	18.19	951-00 J 22-** P/S 50
951-00 RJ 24-** P/S 50	43.15	34.92	38.12	15.10	2.25	84	40.00	20.75	951-00 J 24-** P/S 50

CHARACTERISTIQUES

- Shell material : Aluminium alloy
- Plating : Standard plating - Olive Drab Cadmium passivated.
Other plating option - Clear Cadmium,
Black Anodised for tropical environment
- Type of contact : Crimp or solder type
- Insert material for,
Crimp type contacts : Fluoro silicone
Solder type (Nonremovable) contacts : Neoprene
- Temperature range:
Crimp type -55°C to + 150°C
Solder type -55°C to + 125°C
- Service Voltage :
Service rating 1 : 500 VRMS 50 Hz
Service rating 2 : 750 VRMS 50 Hz

BASIC IDENTIFIER
TYPE 5 - AS per UTE
93422 Specifications

SHELL TYPE
00 Square Flange Receptacle-
with adaptor option

TYPES OF ACCESSORIES
 \triangle

SHELL SIZE
08-10-12-14-16-18-20-22-24

ARRANGEMENTS

CONTACT TYPE
P Male Contact
S Female Contact

INSERT POSITIONING LETTER
Standard position : no letter
W-X-Y or Z

TYPE OF CONTACT
Size 20 Standard, none
Size 16 Standard, none
Size 8 Crimp type, consult us
Solder type standard : issue 8
Coax : Standard : none
issue 1 : 1
issue 3 : 3
issue F5 : F5

OBLIGATORY SUFFIX

SPECIAL MODIFICATIONS
311 Clear cadmium plating
031 Black Anodised plating
395 Kerosene resisting insert
A 315 Fitting for thermosink sleeve
A 231 Special olive drab cadmium
240 hrs salt spray resistance

ADAPTOR TYPE

Accessories	Crimping contacts Shell						Soldering contacts Shell					
	00	01	02	06	07	08	00	01	02	06	07	08
Nut	R	R	-	R	R	-	E	E	-	E	E	-
Adaptor	RA	RA	-	RA	-	-	A	A	-	A	-	-
Straight cable clamp	RC	RC	-	RC	RC	-	EC	EC	-	EC	EC	-
Water-tight	RJ	RJ	-	RJ	RJ	-	J	J	-	J	J	-
Potting cup	RP	RP	-	RP	RP	-	P	P	-	P	P	-
Nut	-	SK	-	SK	-	-	-	EK	-	EK	-	-
Without nut	-	-	R	-	RA	-	-	-	E	-	A	-
Elbowed cable clamp	-	-	-	-	-	RC	-	-	-	-	-	EC
Closed elbowed cable clamp	-	-	-	-	-	SC	-	-	-	-	-	C
Closed water-tight end bell	-	-	-	-	-	SJ	-	-	-	-	-	EJ
Water-tight colletting end bell	-	-	-	-	-	SK	-	-	-	-	-	EK
Elbowed cable clamp and water-tight	-	-	-	-	-	SL	-	-	-	-	-	EL
Grounding adaptor	RT	RT	-	RT	RT	-	-	-	-	-	-	-

*Consult us for the soldering contact version.

DWN LAKSHMI SUDHA R	MATERIAL -	HEAT TREAT -
CHK RAKESH S		
APVD VINCENT P		
NAME 951 series_Square Flange Receptacle with adaptor option		
SCALE 2:1	SIZE A2	DRAWING NO 951-00_++
SHEET 1 of 1	REV A	

DIMENSIONS: MM	TOLERANCES UNLESS OTHERWISE SPECIFIED:
\varnothing	0 PLC \pm
\pm	1 PLC ± 0.05
\pm	2 PLC ± 0.05
\pm	3 PLC ± 0.02
\pm	4 PLC \pm
ANGLES \pm	
SURFACE TEXTURE	$\sqrt{\quad}$

THIS INFORMATION IS CONFIDENTIAL AND PROPRIETARY TO TYCOO ELECTRONICS CORPORATION AND ITS WORLDWIDE SUBSIDIARIES AND AFFILIATES (TEC). IT MAY NOT BE DISCLOSED TO ANYONE, OTHER THAN TE PERSONNEL, WITHOUT AUTHORIZATION FROM TE (WWW.TE.COM).