

4

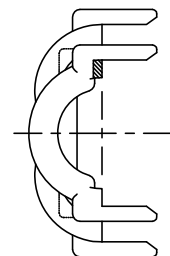
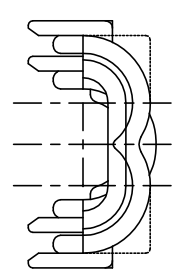
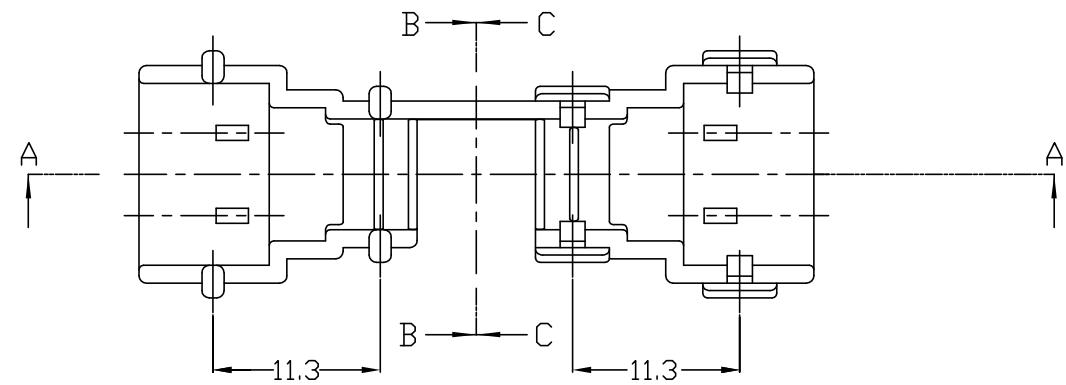
3

2

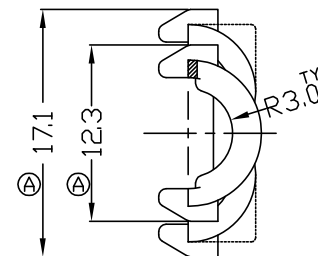
1

THIS DRAWING IS UNPUBLISHED. RELEASED FOR PUBLICATION  
COPYRIGHT BY TYCO ELECTRONICS CORPORATION. ALL RIGHTS RESERVED.

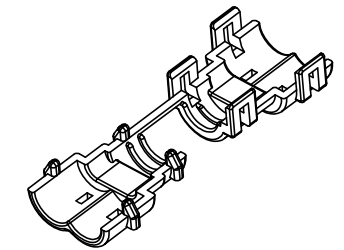
LOC	DIST	REVISIONS					
		P	LTR	DESCRIPTION	DATE	DWN	APVD
DS	-			RELEASED<FC00-0142-03>	06/OCT/'03	YD.	CS
			A	REVISED <ECR-05-004668>	13/JUN/'05	CH	CS
			A1	REVISED <ECR-07-005250>	12/JAN/'11	SJ	HG



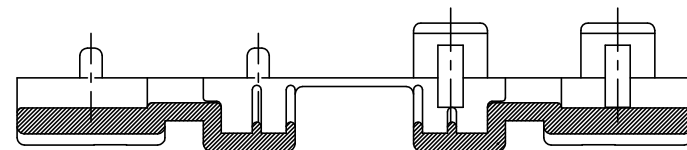
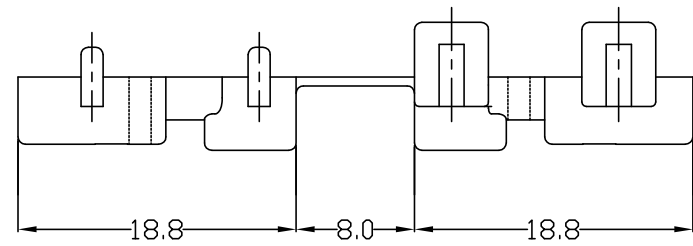
B-B



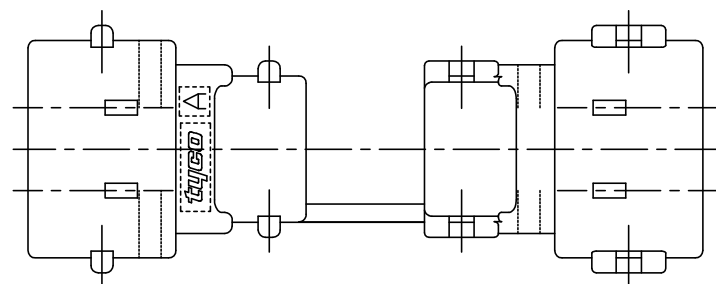
C-C



3D VIEW<SCALE 1:1>



A-A



NOTE

1. APPLICABLE CORRUGATOR DIAMETER :  $\phi 5.0$
2. APPLICABLE CAP ASS'Y P/N : 936291-2  
PLUG ASS'Y P/N : 936248-2
- ①3. APPLICATION TEST SPEC: MS210-06C(EXCEPT 4.4)

BLACK	PA66	936311-1
COLOR	MATERIAL	P/N

THIS DRAWING IS A CONTROLLED DOCUMENT FOR TYCO ELECTRONICS CORPORATION. IT IS SUBJECT TO CHANGE AND THE CONTROLLING ENGINEERING ORGANIZATION SHOULD BE CONTACTED FOR THE LATEST REVISION.		DWN: SJ CHOI		Tyco Electronics Kyungsan, Korea	
DIMENSIONS: mm		CHK: JW JUNG			
TOLERANCES UNLESS OTHERWISE SPECIFIED:		APVD: HG CHD		NAME	
0 <XX<10 ± 0.2		PRODUCT SPEC		COVER HSG FOR .090 SEALED 2P PLUG CONN'R	
10<XX<30 ± 0.25		APPLICATION SPEC		SIZE	
30<XX ± 0.3		WEIGHT		CAGE CODE	
ANGLES ± 3°		CUSTOMER DRAWING		DRAWING NO	
MATERIAL		SCALE 2/1		RESTRICTED TO	
SEE TABLE		SHEET 1 OF 1		REV A1	
COLOR		A3 00779		G- 936311	
SEE TABLE					