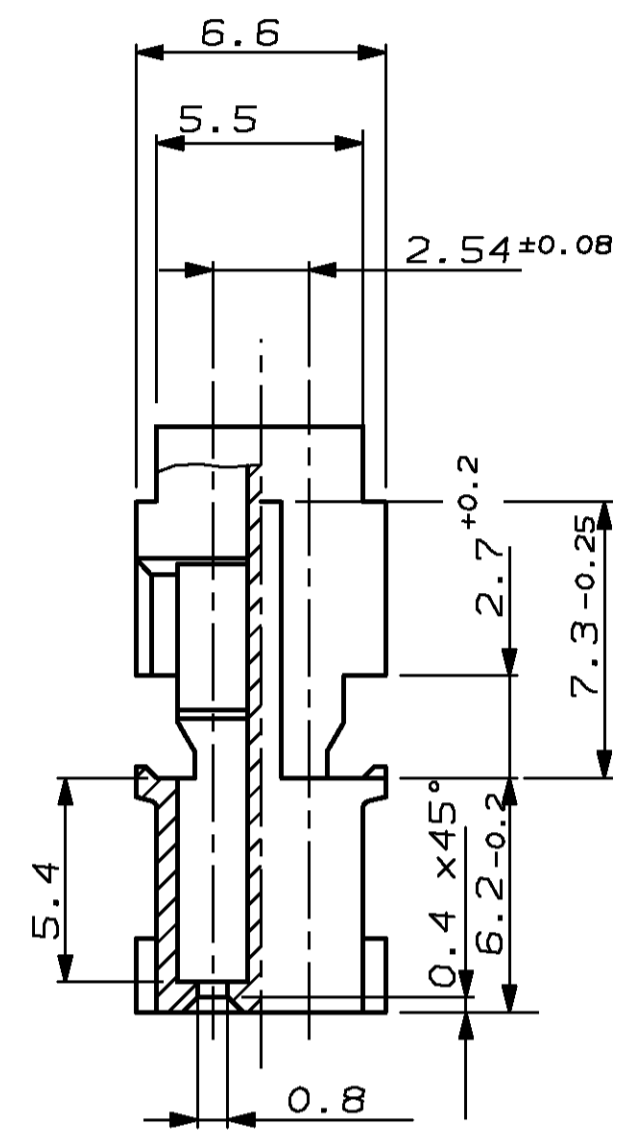
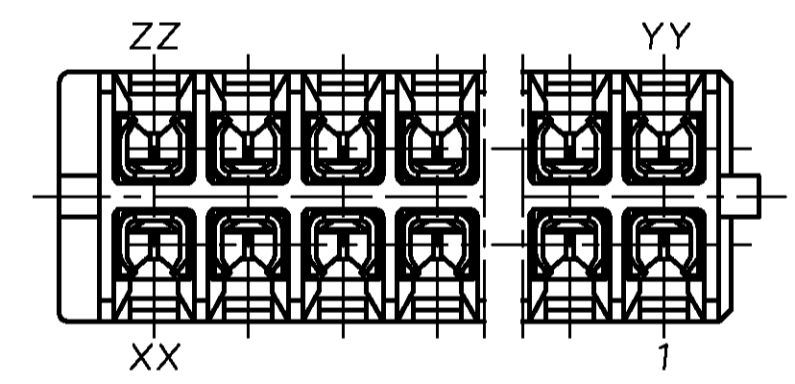
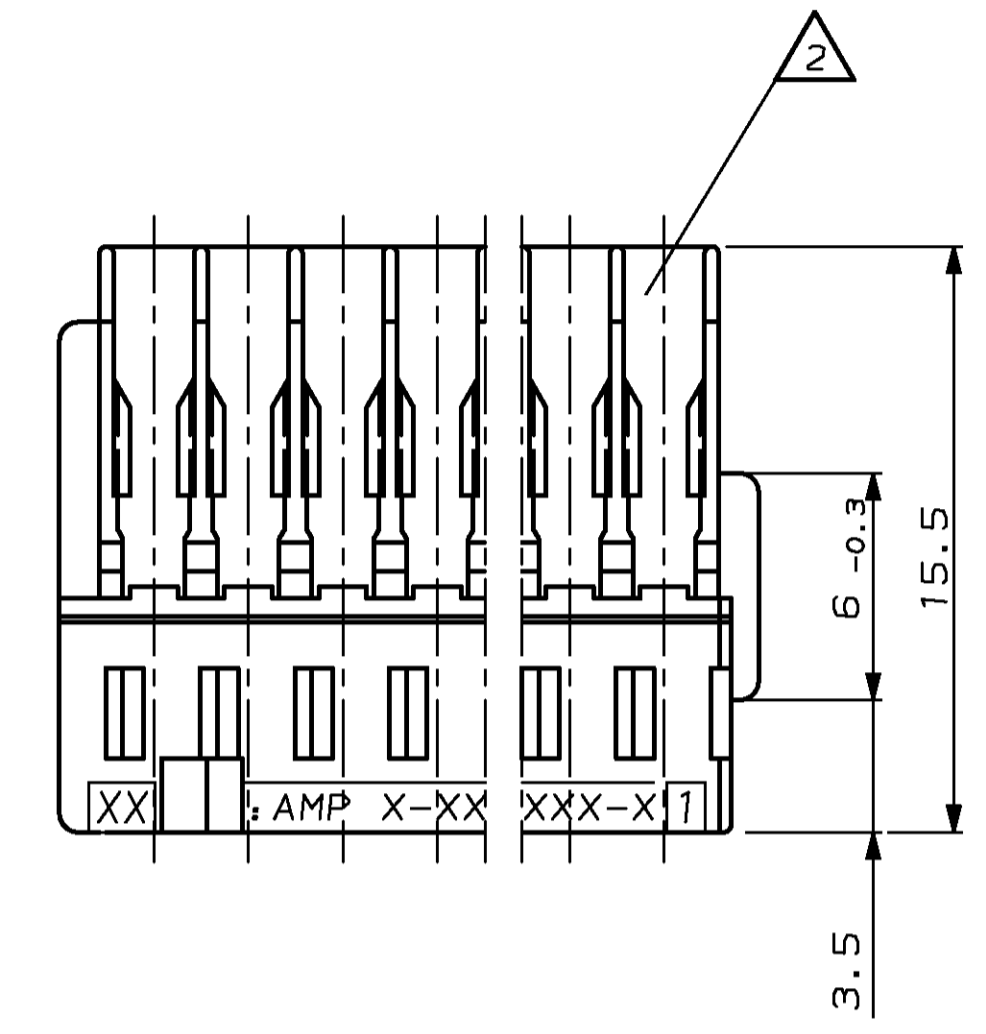
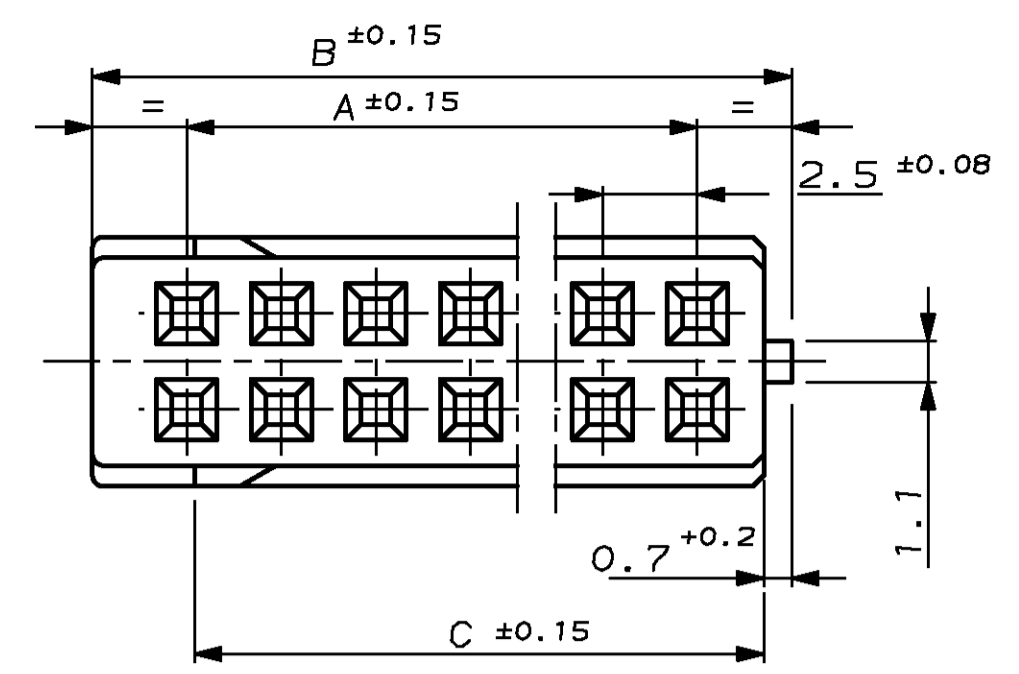


LOC	DIST	REV. NO.	DESCRIPTION	DATE	BY	CHK
AI	-	D3	Zeichnung neu erstellt	11DEC01	GF	BK
		D4	REVISED AS PER ECN-22-177124	10OCT22	KH	SZ



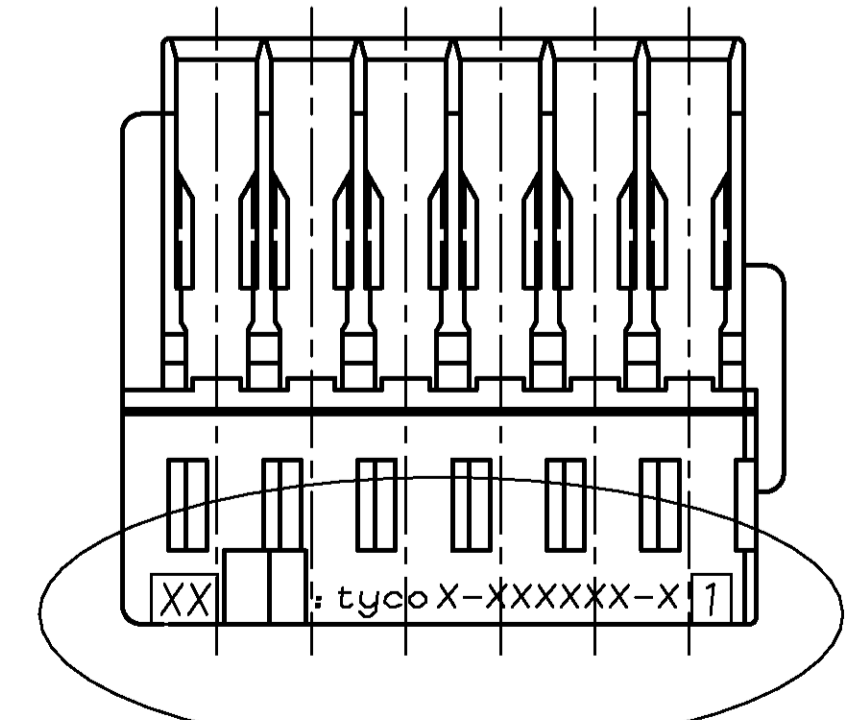
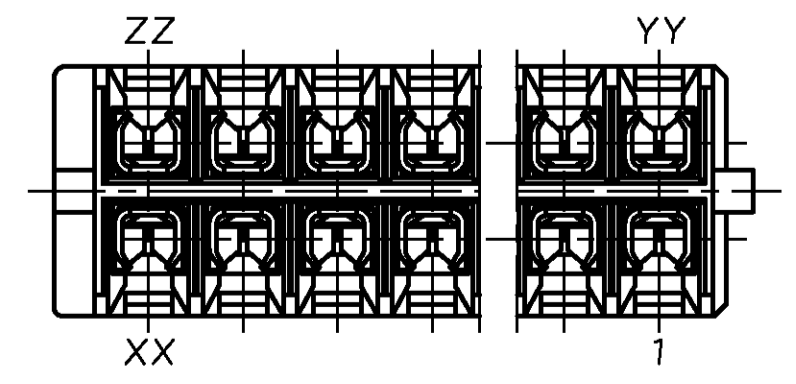
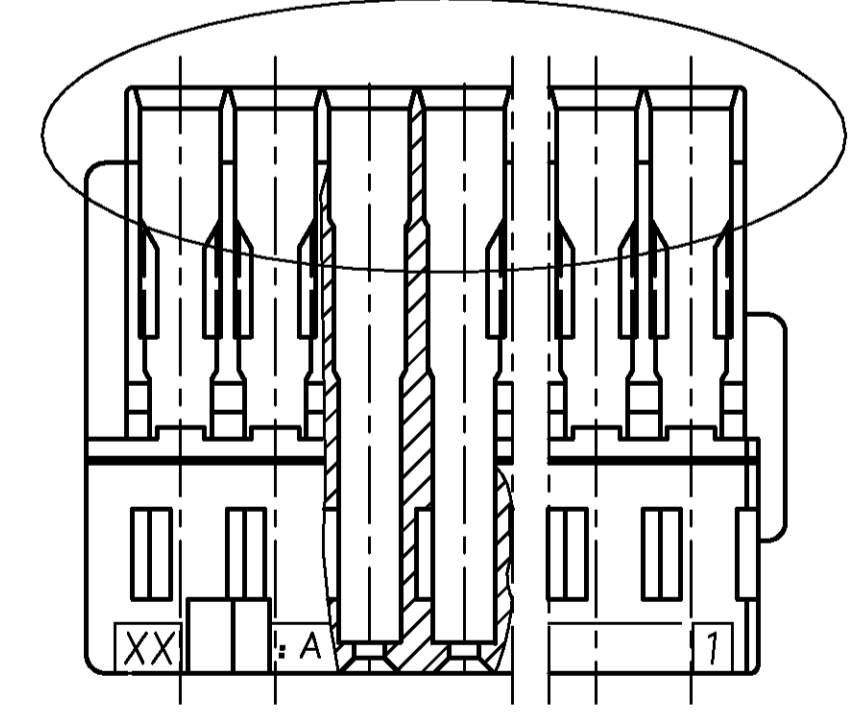
Bemerkungen

- 1 Passende Abdeckkappen:  
12 pol.: 969420, 969444  
16 pol.: 969421, 969445  
20 pol.: 969422, 1355178
- 2 Kammer geeignet fuer Tandem Spring Kontakt:  
Bestell-Nr.: 969084 / DGB 0.2 - 0.5 mm<sup>2</sup>  
Crimpkontakt  
Bestell-Nr.: 215282 / DGB 0.1 - 0.4 mm<sup>2</sup>  
Schneidklemmkontakt

NOTES

- 1 SUITABLE COVERS:  
12 POSN.: 969420, 969444  
16 POSN.: 969421, 969445  
20 POSN.: 969422, 1355178
- 2 CAVITY SUITABLE FOR TANDEM SPRING CONTACT:  
ORDER-NO.: 969084 / WIRE RANGE 0.2 - 0.5 mm<sup>2</sup>  
CRIMPCONTACT  
ORDER-NO.: 215282 / WIRE RANGE 0.1 - 0.4 mm<sup>2</sup>  
IDC - CONTACT
- 3 SUITABLE HEADERTS:  
12 pol.: 967250  
16 pol.: 966870  
20 pol.: 966871

Wahlweise



Wahlweise

Zeichnung nur für AUDI

OBSOLETE	TYCO-PART-NO.	REV.	POS.	DIM A	DIM B	DIM C	XX	YY	ZZ	MATERIAL	COLOR	RAL-NO.
OBSOLETE	3-929698-2	D	16	17.5	22.4	19.3	8	9	16	PA 6.6 GF13	BROWN/braun	1011
OBSOLETE	2-929698-2	D	16	12.5	22.4	19.3	8	8	16	PA 6.6 GF13	RED/rot	3003
	1-929698-3	D	20	22.5	27.4	24.3	10	11	20	PA 6.6 GF13	BLACK/schwarz	9011
OBSOLETE	1-929698-2	D	16	17.5	22.4	19.3	8	9	16	PA 6.6 GF13	BLACK/schwarz	9011
	1-929698-1	D	12	12.5	17.4	14.3	6	7	12	PA 6.6 GF13	BLACK/schwarz	9011
	929698-3	D	20	22.5	27.4	24.3	10	11	20	PA 6.6 GF13	white/weiß	9010
OBSOLETE	929698-2	D	16	17.5	22.4	19.3	8	9	16	PA 6.6 GF13	white/weiß	9010
	929698-1	D	12	12.5	17.4	14.3	6	7	12	PA 6.6 GF13	white/weiß	9010

THIS DRAWING IS UNCLASSIFIED, RELEASED FOR PUBLICATION DATE 07-2001. VERTRÄGLICHE UNVERÖFFENTLICHTE ZEICHNUNG FREI FÜR VERÖFFENTLICHUNG, DATUM 07-2001. PATENTED WITHIN THE UNITED STATES AND OTHER COUNTRIES. BY AMP INCORPORATED. ALL RIGHTS RESERVED. KEINE PATENTE VERGESSEN. AMP INCORPORATED, ALL RIGHTS RESERVED.		DRAWN: G. Fischer 11-DEC-01 CHECKED: B. Kirsch 11-DEC-01	
DIMENSIONS: ALL DIMENSIONS IN MILLIMETERS UNLESS OTHERWISE SPECIFIED. TOLERANCES UNLESS OTHERWISE SPECIFIED: ALL DIMENSIONS IN MILLIMETERS UNLESS OTHERWISE SPECIFIED.		PRODUCT SPEC: REC.H56. 12/16/20 POSN., TANDEM SPRING MT APPLICATION SPEC: Buchsengeh. 12/16/20 pol., Tandem Spring MT	
MATERIAL: -		SIZE: A1 00779 WEIGHT: - FINISH/OBERFLÄCHE/FARBE: -	
CUSTOMER DRAWING		DRAWING NO: 929698 ZEICHNUNG-NR.: 929698 REVISIONS: 5,1 SHEET: 1 OF 1 REV: D4	