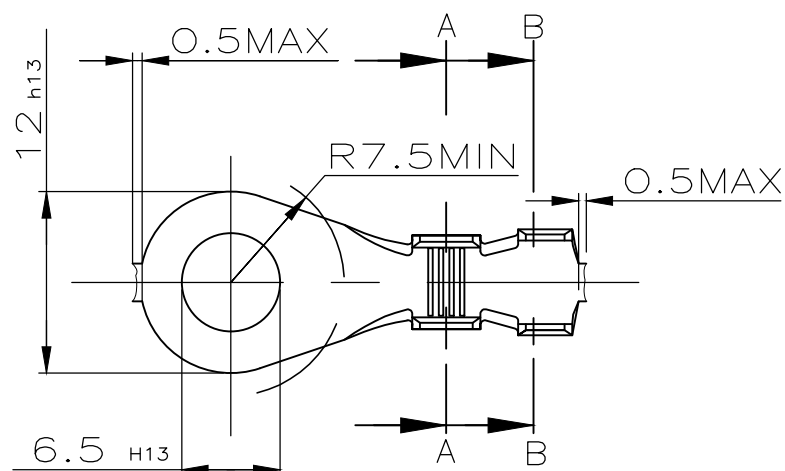


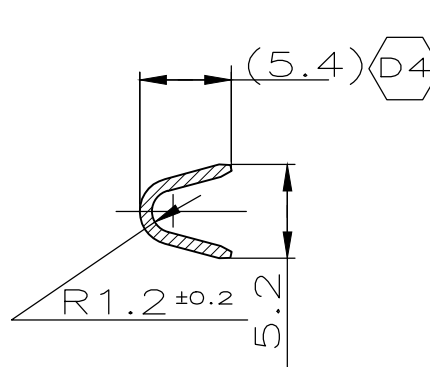
REVISIONS

P	LTR	DESCRIPTION	DATE	DWN	APVD
	D3	Dim (5.4 REF) was Dim 5.4	23APR2014	RS	—
	D4	Drawing Updated	14OCT2016	SS	NB
	D5	Drawing Updated	23APR2019	MKS	ACH

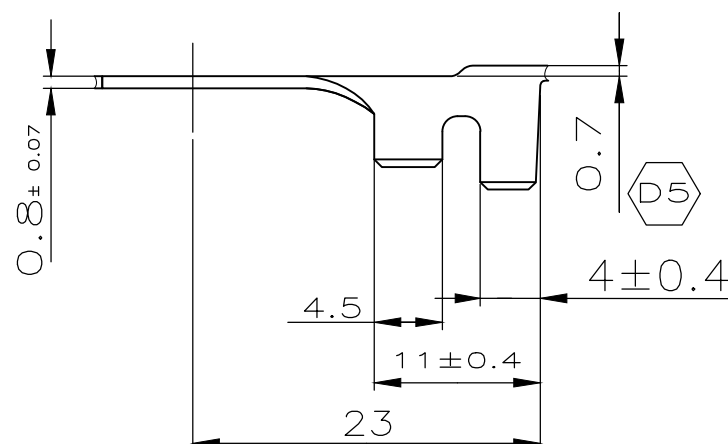
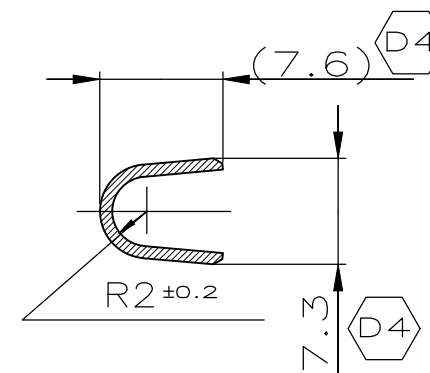
AENDERUNGEN DIE DEM TECH-
NISCHEN FORTSCHRITT DIENEN,
BEHALTEN WIR UNS VOR



SCHNITT A-A



SCHNITT B-B



Drahtgrossenbereich:: 4 mm²
Angeschlagener Leiter: FLR-Litze
Leiter: F-Crimp
Isolation: OVL-Crimp

Drahtgrossenbereich:: >2.5 - 4 mm²
Angeschlagener Leiter: FLK-Litze
Leiter: F-Crimp
Isolation: F-Crimp

928927-4	CuSn4 R390	verzinnt
928927-3	CuZn30 R380	verzinnt
928927-2	CuSn4 R390	blank
928927-1	CuZn30 R380	blank
Bestell-Nr.	Werkstoff	Oberflaeche

THIS DRAWING IS A CONTROLLED DOCUMENT.		DWN R.NITSCHKE 29OCT1986	STE TE Connectivity													
DIMENSIONS: mm		CHK L.NIX 29OCT1986														
TOLERANCES UNLESS OTHERWISE SPECIFIED:		APVD -	NAME RINGZUNGE													
<table border="1"> <tr> <td>0 PLC</td> <td>±</td> </tr> <tr> <td>1 PLC</td> <td>±</td> </tr> <tr> <td>2 PLC</td> <td>±</td> </tr> <tr> <td>3 PLC</td> <td>±</td> </tr> <tr> <td>4 PLC</td> <td>±</td> </tr> <tr> <td>ANGLES</td> <td>± 1°</td> </tr> </table>		0 PLC	±	1 PLC	±	2 PLC	±	3 PLC	±	4 PLC	±	ANGLES	± 1°	PRODUCT SPEC -	Entspricht DIN 46225 A6-4	
0 PLC	±															
1 PLC	±															
2 PLC	±															
3 PLC	±															
4 PLC	±															
ANGLES	± 1°															
MATERIAL -		FINISH -	APPLICATION SPEC -	RESTRICTED TO -												
		WEIGHT -	SIZE A3	CAGE CODE 00779												
		CUSTOMER DRAWING	DRAWING NO C-928927	SCALE 2:1												
			SHEET 1 OF 1	REV D5												