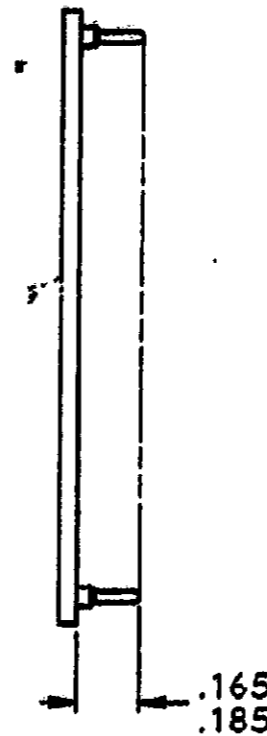
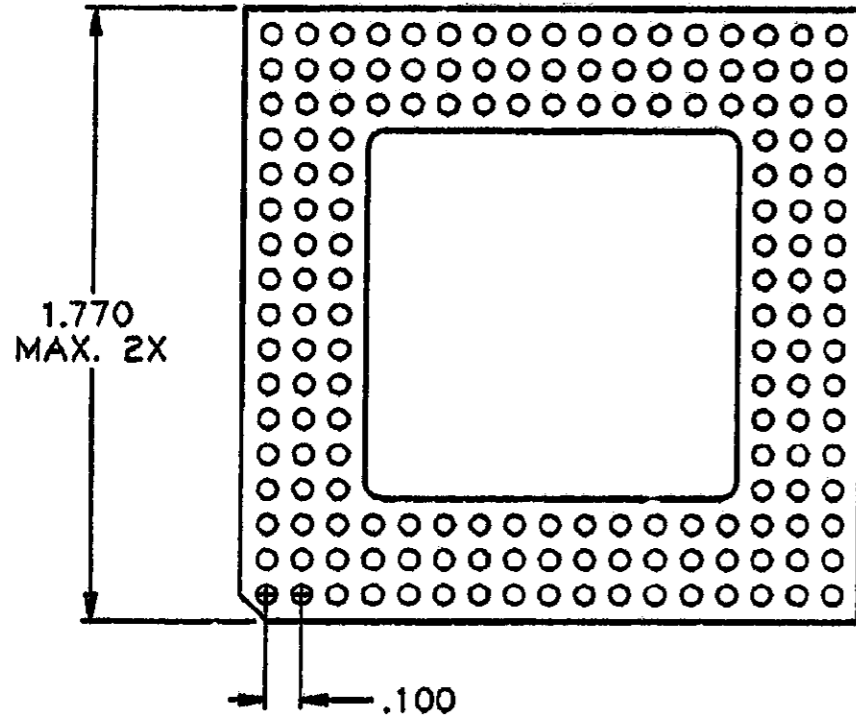


NOTES: UNLESS OTHERWISE SPECIFIED

1. INTERPRET DRAWING PER ANSI Y14.5M 1982.
2. INSULATOR: THERMOPLASTIC POLYESTER (P.E.T.) COLOR-BLACK.
3. CONTACT ASSY:
 - a) CONTACT = BE. CU. GOLD TIN/LEAD
 - b) SLEEVE = BRASS GOLD TIN/LEAD
4. BOW REQUIREMENT .003 IN./IN. MAX.
5. SLEEVE PUSHOUT FORCE = 4 LBS. MIN.



168	CONTACT ASSEMBLY	2
1	INSULATOR	1
QTY.	DESCRIPTION	ITEM NO.

THIS IS A C.A.D. GENERATED DRAWING.
DO NOT MAKE MANUAL REVISIONS TO MASTER.



REV. 0 REVISIONS INITIAL RELEASE ESR# A3663 L.S. 2-25-93 APP'D: MU 2-26-93	THIRD ANGLE PROJECTION TOLERANCES (EXCEPT AS NOTED) ANGULAR = ±1/2° DECIMAL .XX = ±.01 DECIMAL .XXX = ±.002 DECIMAL .XXXX = ±.0005 AUGAT CONFIDENTIAL This document contains information which is the exclusive property of Augat Inc. Distribution, reproduction or use by others is not permitted without the expressed written consent of Augat Inc.	UNLESS OTHERWISE SPECIFIED DIMENSIONS ARE IN INCHES DO NOT SCALE PRINT	ORIGINAL DATE OF DRAWING: 2-25-93	452 JOHN DIETSCH BLVD. ATTLEBORO FALLS, MASS. 02763 TITLE: OUTLINE DWG. SOCKET ASSEMBLY DWG. NO. PGM168-1A1715-V PRODUCT CODE: 162 SCALE: 2:1 SHEET 1 OF 1	
		DATABASE: PGM16815 MAINCELL: MOPM168-1A1715-V LIBRARY: PS1620INS	DRAWN: L. SILVA DATE: 2-25-93		REVISIONS 0
		MATERIAL: SEE ABOVE	CHECKED: MU DATE: 2-26-93		REV. 0
		FINISH: SEE ABOVE	APPROVED: M. VIEIRA DATE: 2-26-93 CODE IDENT. NO. 91506 DWG. SIZE B NEXT ASSY:		REV. 0

CAD0130908

FIRST DESIGNED FOR: