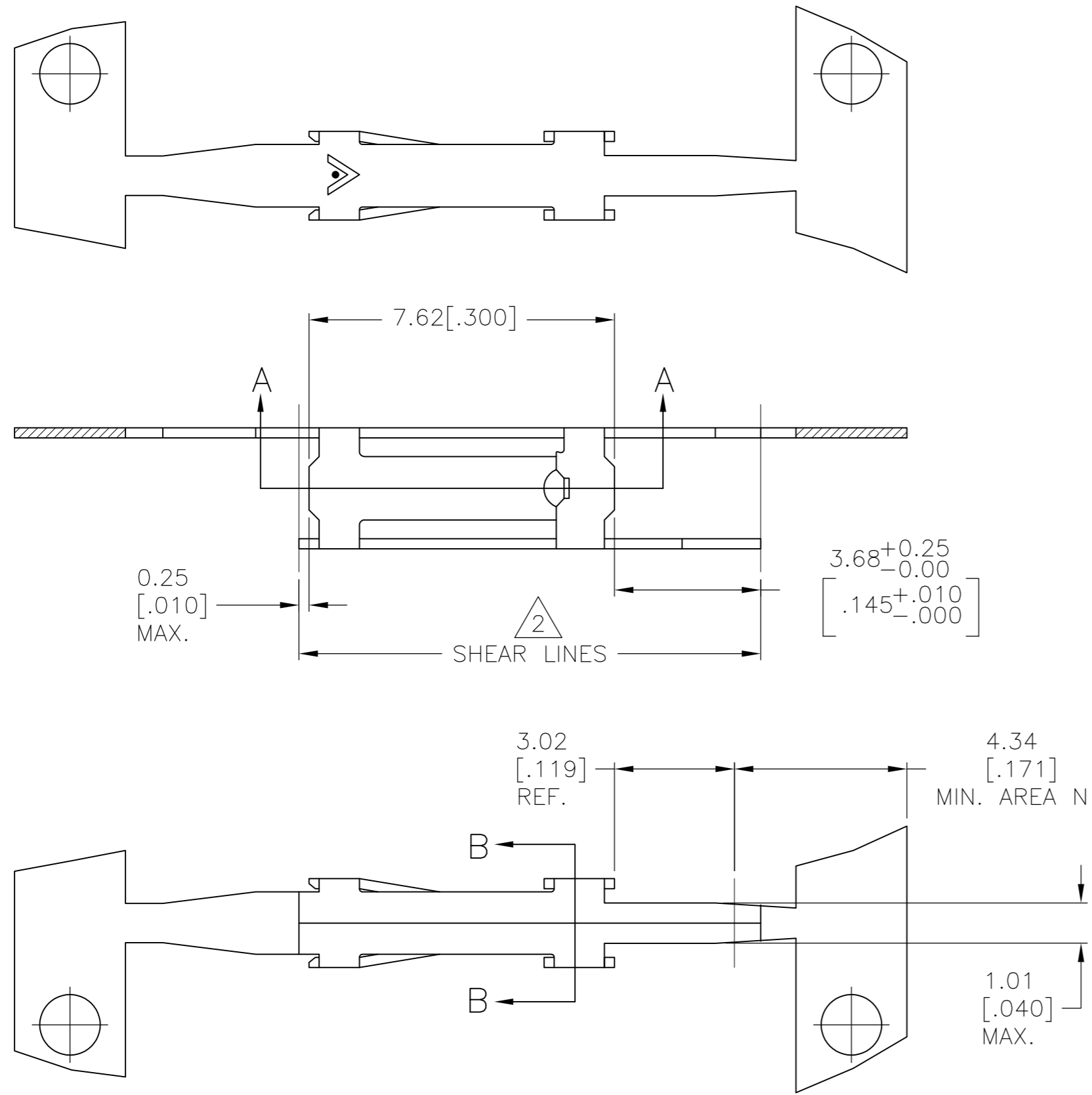
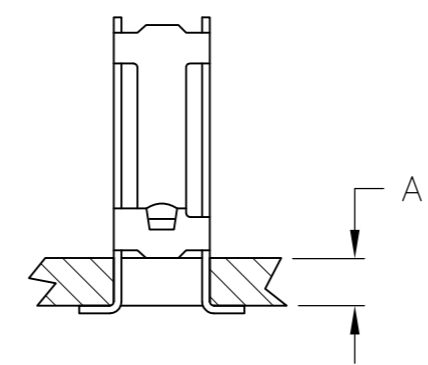
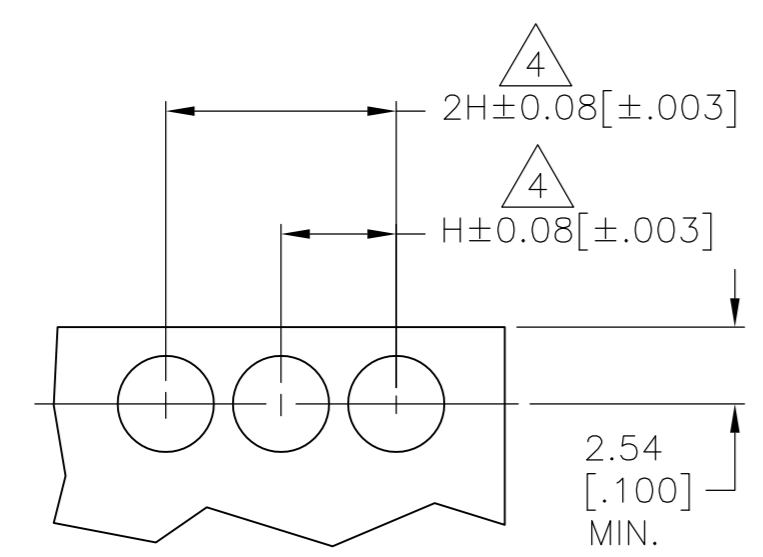
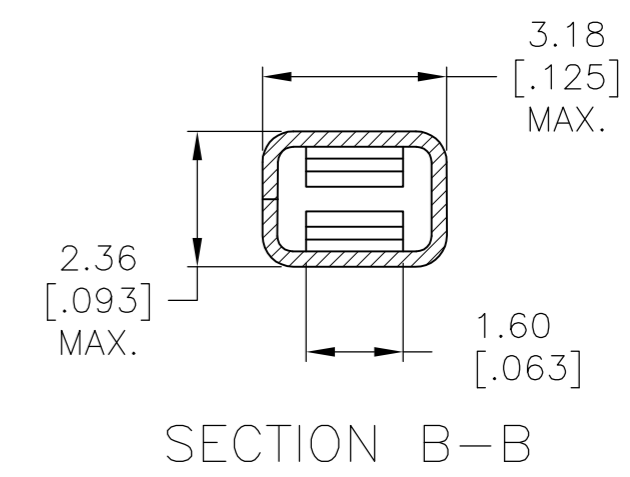
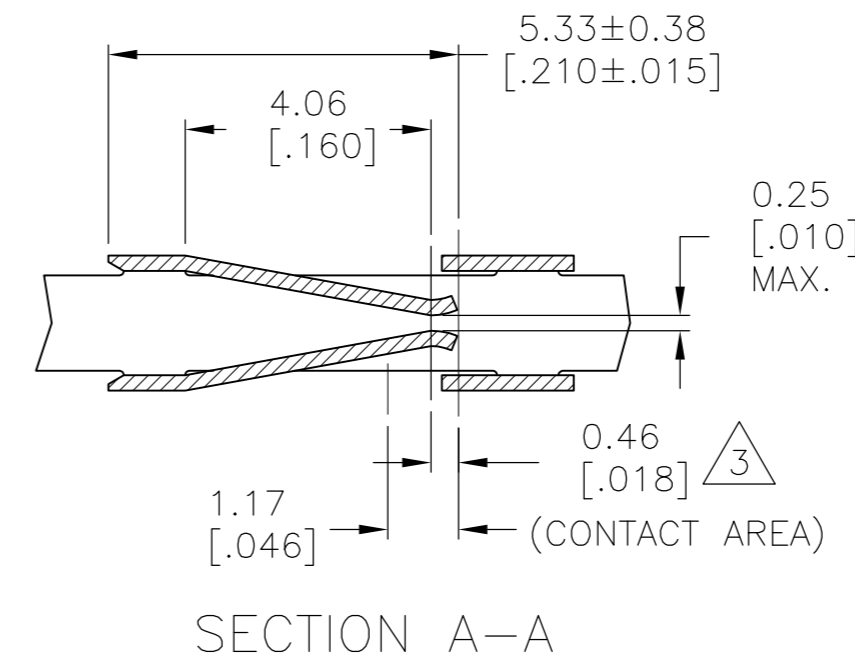


THIS DRAWING IS UNPUBLISHED. RELEASED FOR PUBLICATION
 © COPYRIGHT BY TYCO ELECTRONICS CORPORATION. ALL RIGHTS RESERVED.

LOC	DIST	REVISIONS			
P	LTR	DESCRIPTION	DATE	DWN	APVD
	G	ECO-06-020085	16OCT2007	RB	NE
	G1	REVISED PER ECO-09-020774	21AUG09	KK	AEG



- 1 THIS PART FOR USE WITH AMPMODU MINATURE APPLICATOR.
- 2 SHEAR LINES DEFINE LOOSE PIECE PART.
- 3 POINT OF MEASUREMENT FOR PLATING THICKNESS.
- 4 "H" RECEPTACLE CENTERS MAY VARY DEPENDING ON REQUIREMENTS. MINIMUM NOMINAL CENTER SPACING BETWEEN ADJACENT RECEPTACLES IS 3.81 ± 0.08 [$.150 \pm .003$]
- 5 0.00076 [.000030] GOLD IN CONTACT AREA, GOLD FLASH ON REMAINDER, ALL OVER 0.00127 [.000050] NICKEL.
- 6 0.00076 [.000030] MIN PRE-TIN.
- 7 0.00076 [.000030] GOLD IN CONTACT AREA 0.00254-0.00508 [.000100-.000200] BRIGHT TIN-LEAD IN AREA N, ALL OVER 0.00127 [.000050] NICKEL.
- 8 0.00038 [.000015] GOLD IN CONTACT AREA, 0.00254-0.00508 [.000100-.000200] BRIGHT TIN-LEAD IN AREA N, ALL OVER 0.00127 [.000050] NICKEL.
- 9 0.00076 [.000030] GOLD IN CONTACT AREA 0.00254-0.00508 [.000100-.000200] MATTE TIN IN AREA N, ALL OVER 0.00127 [.000050] NICKEL.
- 10. ROHS 2002/95/EC COMPLIANT.
- 11 OBSOLETE PART NUMBER.
- 12 OBSOLETE PARTS: OBSOLETE CIS STREAMLINING PER D.RENAUD/D.SINISI



5-87508-3	9	5-87004-4
11 87508-4	8	11 87004-5
87508-3	7	12 87004-4
-	-	-
11 87508-2	6	11 87004-2
11 87508-1	5	11 87004-1
LOOSE PIECE PART NO	FINISH	PART NUMBER

THIS DRAWING IS A CONTROLLED DOCUMENT.

DWN	E.BRANDBERG	7-18-94
CHK	J. HERRINGTON	7-18-94
APVD	J. HERRINGTON	7-18-94
PRODUCT SPEC		
APPLICATION SPEC		
WEIGHT	-	
MATERIAL	.010 THICK COMMERCIAL PHOS BRONZE	
FINISH	SEE TABLE	

Tyco Electronics Corporation
 Harrisburg, Pa 17105-3608
 NAME: CONTACT, MOD I, FEMALE, TYPE B, STANDARD PRESSURE
 SIZE: A2 CAGE CODE: 00779 DRAWING NO: C=87004 RESTRICTED TO: -
 CUSTOMER DRAWING SCALE: 8:1 SHEET: 1 OF 1 REV: G1