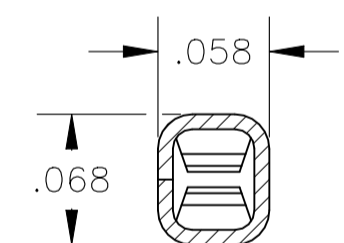
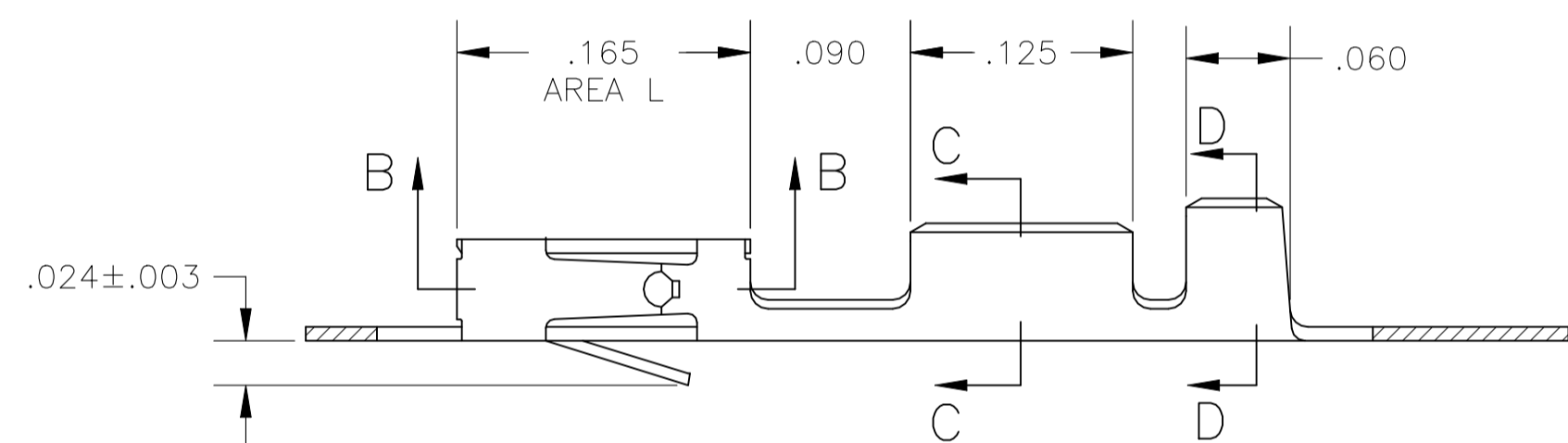
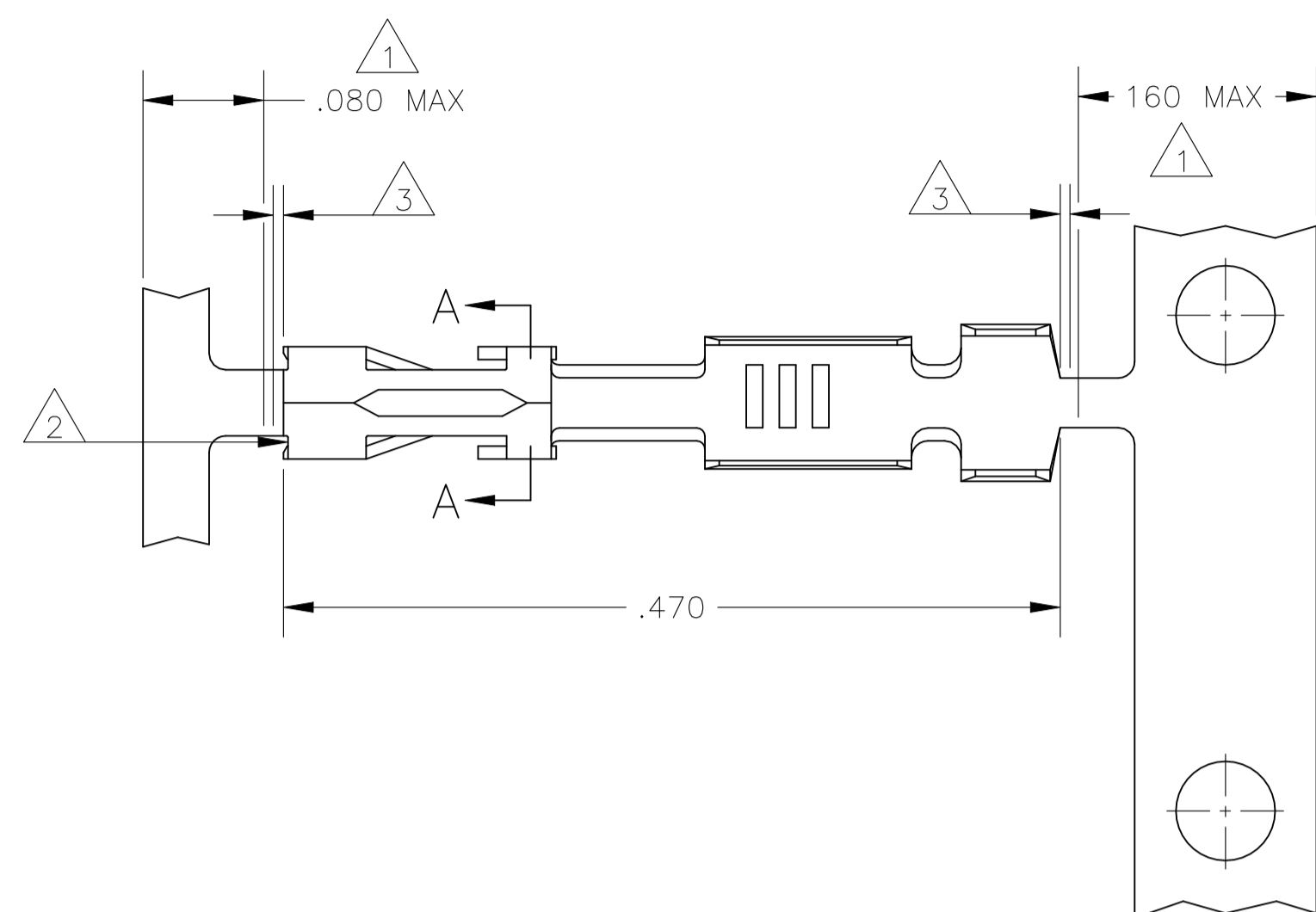
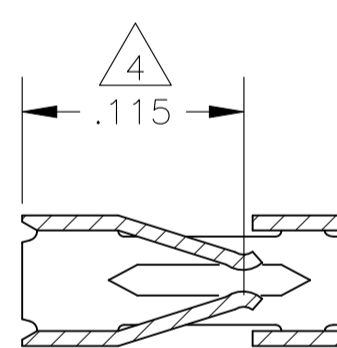


REVISIONS				
P	LTR	DESCRIPTION	DATE	APPRO
L1		REVISED PER ECN-22-171534	30AUG2022	RK JO

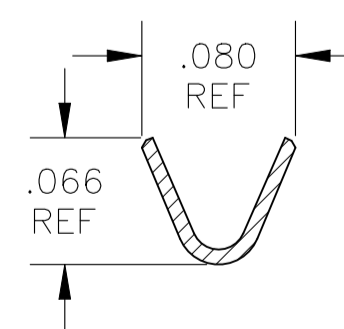
- 1 PLATING IS NOT REQUIRED IN THIS AREA.
- 2 CUT-OUTS ON BOX AT MANUFACTURER'S OPTION.
- 3 .006 MAX LOOSE PIECE CUT-OFF.
- 4 POINT OF MEASUREMENT FOR PLATING THICKNESS(INSIDE BEAMS).
- 5 .000015 GOLD IN CONTACT AREA, GOLD FLASH ON REMAINDER OF TERMINAL, ALL OVER .000050 NICKEL.
- 6 .000030 GOLD OVER .000050 NICKEL.
- 7 .000030 GOLD IN CONTACT AREA, GOLD FLASH ON REMAINDER OF TERMINAL, ALL OVER .000050 NICKEL.
- 8 PREPLATED: .000078-.000158 BRIGHT TIN.
- 9 .000030 GOLD IN CONTACT AREA, GOLD FLASH IN AREA L, ALL OVER .000050 NICKEL.
- 10 .000050 GOLD IN CONTACT AREA, GOLD FLASH ON REMAINDER OF TERMINAL, ALL OVER .000050 NICKEL.
- 11 SHEARED EDGES PERMITTED TO BE UNPLATED.
- 12 OBSOLETE PART NUMBER.
- 13 OBSOLETE PARTS: OBSOLETE CIS STREAMLINING PER D.RENAUD/D.SINISI.



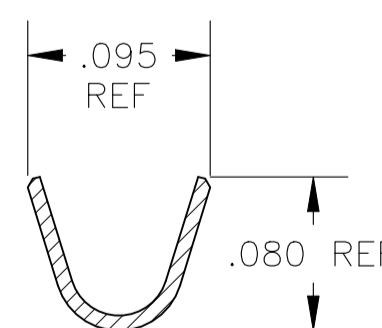
SECTION A-A



SECTION B-B



WIRE RANGE #20-#24
SECTION C-C



INSULATION RANGE .069 MAX
SECTION D-D

OBSOLETE	12 -6	1-	12 -7	10	1-86492-8
OBSOLETE	12 -5	1-	12 -4	9	1-86492-3
	87046 -4		12 -8	8	-9
			12 -5	7	-6
			12 -3	6	-4
	87046 -1		12 -1	5	86492 -2
	LOOSE PIECE PART NUMBER		STANDARD APPLICATOR PART NUMBER	FINISH	MINI APPLICATOR PART NUMBER

THIS DRAWING IS A CONTROLLED DOCUMENT.		DIN 20MAY85		L A MAYER	
DIMENSIONS: INCHES		TOLERANCES UNLESS OTHERWISE SPECIFIED:		CHK R J DAVIS 07JUN85	
0 PLC ± -		1 PLC ± -		APPRO C LINDGREN 14JUN85	
1 PLC ± -		2 PLC ± -		NAME	
2 PLC ± -		3 PLC ± .005		CONTACT, MOD IV 1/2, RECEPTACLE, CRIMP SNAP-IN	
3 PLC ± -		4 PLC ± -		APPLICATION SPEC	
4 PLC ± -		ANGLES ± -		SIZE CAGE CODE DRAWING NO	
MATERIAL CU-NI-SI		FINISH		A1 00779 C=86492	
		WEIGHT		RESTRICTED TO	
		CUSTOMER DRAWING		SCALE 10:1 SHEET 1 of 1 REV L1	