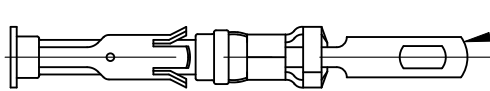


© N/A TE Connectivity. All Rights Reserved.

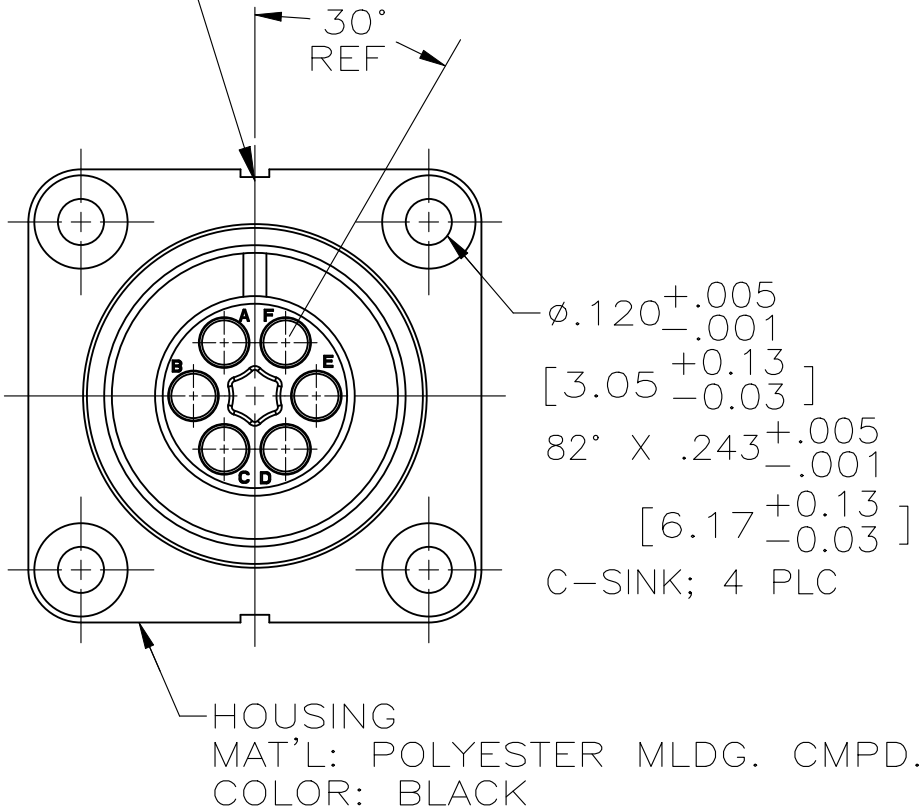
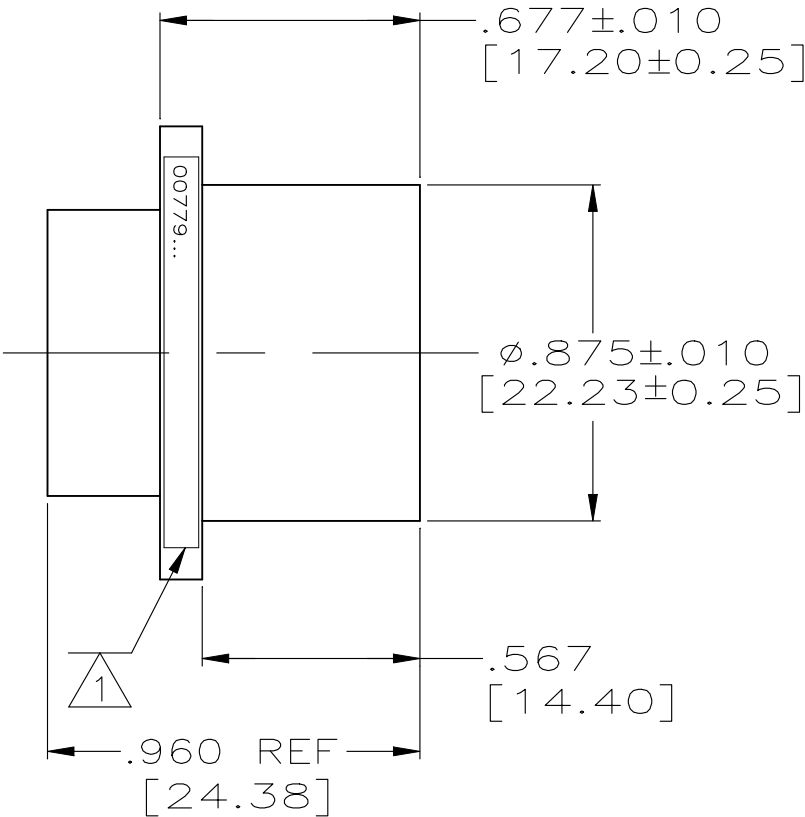
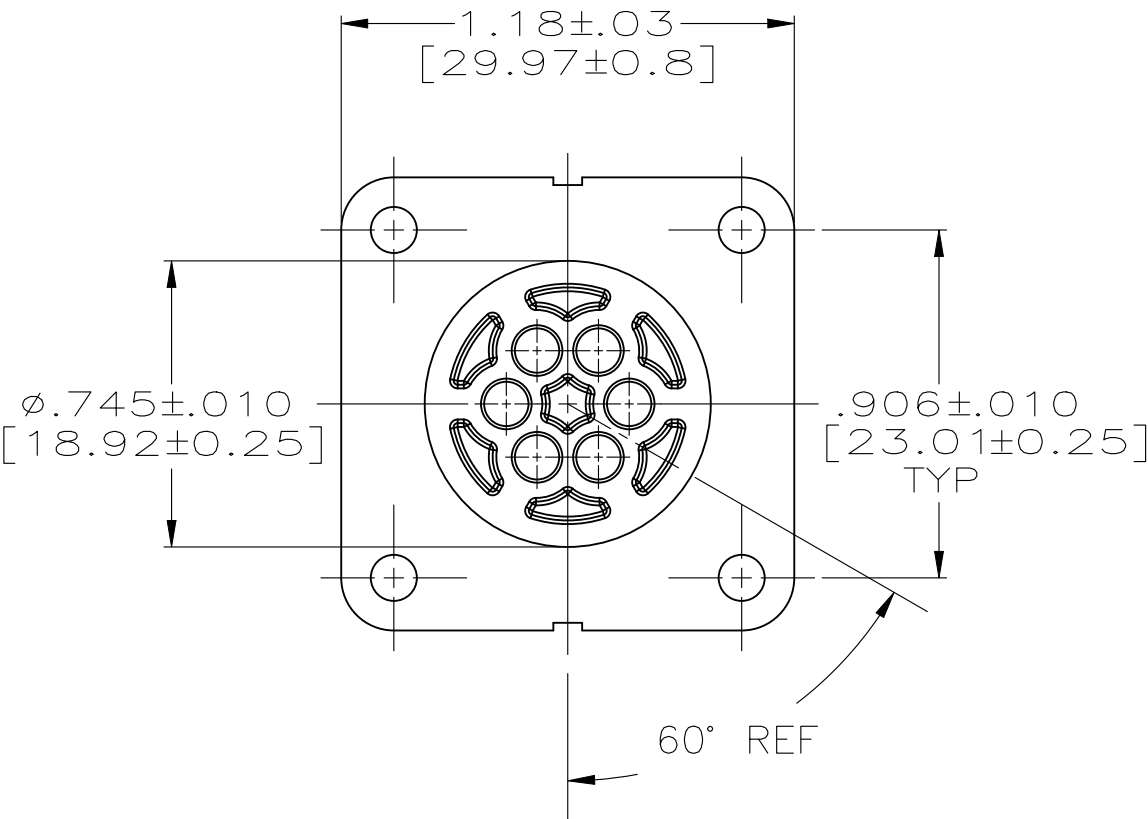
WARNING - THIS DOCUMENT CONTAINS TECHNOLOGY WHOSE EXPORT IS RESTRICTED BY THE EXPORT ADMINISTRATION REGULATIONS ("EAR") PURSUANT TO 15 C.F.R. PARTS 730-774. VIOLATIONS OF THE EAR ARE SUBJECT TO SEVERE CRIMINAL PENALTIES UNDER THE EXPORT CONTROL REFORM ACT, AS AMENDED (TITLE 50, U.S.C., SEC. 4801, ET SEQ.).

| REVISIONS |     |                       |           |     |      |
|-----------|-----|-----------------------|-----------|-----|------|
| P         | LTR | DESCRIPTION           | DATE      | DWN | APVD |
|           | H   | REV PER ECN-25-301617 | 15JAN2025 | LP  | RL   |



SOCKET CONTACT SIZE #16 TYPE III+  
MAT'L: BRASS PER-ASTM-B-16  
FINISH:  $\triangle 5 \triangle 6$

INDENTATION ALLOWED  
AT GATE  
2 PLC



- $\triangle 1$  MARKED PER MIL-STD-130.
2. FRONT FACE OF CONNECTOR WILL ACCEPT A PIN CONTACT CONNECTOR WHICH MATES WITH A MS3102A-14S-6S CONNECTOR.
3. HOUSING IS NOT PROVIDED WITH A THREADED FRONT SKIRT.
- $\triangle 4$  SAME AS 864900-2, EXCEPT NO C'SINK IN  $\phi$ .120 MOUNTING HOLES.
- $\triangle 5$  PLATED 93/7 TIN-LEAD OR TIN PER ASTM-B-545 OVER NICKEL PER AMS-QQ-N-290.
- $\triangle 6$  PLATED TIN PER ASTM-B-545 OVER NICKEL PER AMS-QQ-N-290.

|          |               |                       |            |
|----------|---------------|-----------------------|------------|
| OBSOLETE | $\triangle 6$ | SUPPLIED W/CONTACTS   | 5-864900-1 |
|          | -             | $\triangle 4$         | 864900-4   |
|          | -             | SUPPLIED W/O CONTACTS | 864900-2   |
|          | $\triangle 5$ | SUPPLIED W/CONTACTS   | 864900-1   |
| FINISH   |               | REMARKS               | PART NO.   |

|  |  |                                   |  |           |
|--|--|-----------------------------------|--|-----------|
| THIS DRAWING IS A CONTROLLED DOCUMENT. |  | DWN<br>C.C.THOMAS<br>05-NOV-92    | TE Connectivity  |           |
|  |  | CHK<br>S.GLATFELTER<br>09-NOV-92  |  |           |
|  |  | APVD<br>S.GLATFELTER<br>09-NOV-92 | NAME   |           |
| DIMENSIONS:<br>INCHES                  |  | PRODUCT SPEC                      | RCPT. KIT<br>6 POSN, LGH<br>MS3102A-14S-6S CONFIGURATION |           |
|  |  | APPLICATION SPEC                  | SIZE   | CAGE CODE |
|  |  | WEIGHT                            | DRAWING NO   |           |
| MATERIAL<br>SEE CALLOUTS               |  | FINISH<br>SEE CALLOUTS            | RESTRICTED TO  |           |
|  |  | CUSTOMER DRAWING                  | SCALE  | SHEET     |
|  |  |                                   | 2:1  | 1 OF 1    |
|  |  |                                   |  | REV H     |