

4

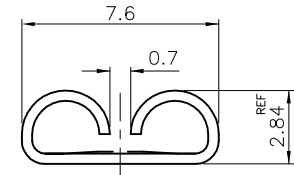
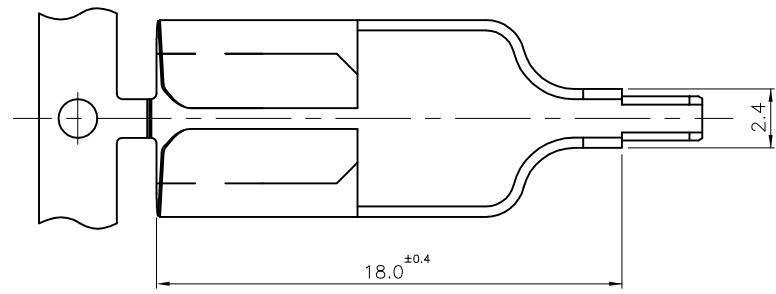
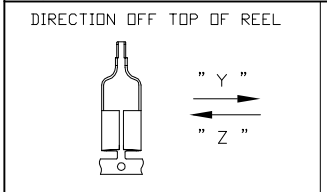
3

2

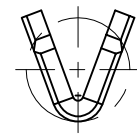
1

THIS DRAWING IS UNPUBLISHED. RELEASED FOR PUBLICATION
 © COPYRIGHT BY TYCO ELECTRONICS CORPORATION, ALL RIGHTS RESERVED.

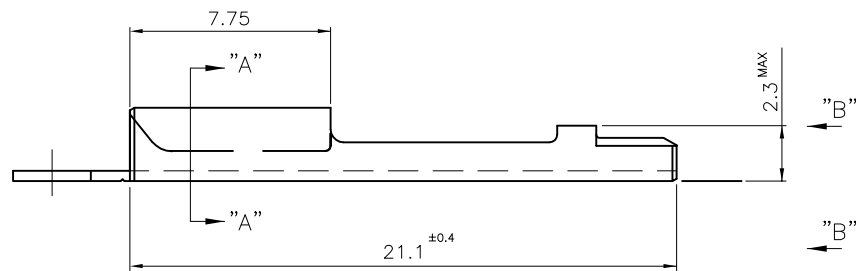
LOC	DIST	REVISIONS					
		P	LTR	DESCRIPTION	DATE	DWN	APVD
DS	-		G	REVISED (ECR-07-002213)	29 JAN, '07	JW	JK
			H	REVISED (ECR-08-007658)	22 APR, '08	JW	JK
			J	REVISED (ECR-08-012915)	23 MAY, '08	JW	JK



SECTION "A-A"



VIEW "B-B" scale=10/1



* NOTES

- 1. RECOMMENDED PCB HOLE DIA; $\phi 1.95(+0.03/-0.05)$
- ② THE ONLY 85048-4,5 & 1-85048-3,4 HAS A PROCESS WITHOUT NOTCH.
- 3. THE 85048-6 IS ONLY FOR EXPORT.
- ④ THE 1-85048-1,2,3,4 ARE ONLY FOR LOCAL USE. (SHEET 2/2)

TOP OF REEL	FINISH	MATERIAL	PART NUMBER
" Z "	POST-TIN PL.	CuNiSi Alloy 0.4THK.	85048-6
" Z "	POST-TIN PL.		85048-5
" Y "	PLAIN		85048-4
" Y "	POST-TIN PL.		85048-3
" Z "	POST-TIN PL.		85048-2
" Y "	PLAIN		85048-1

<small>THIS DRAWING IS A CONTROLLED DOCUMENT FOR TYCO ELECTRONICS CORPORATION. IT IS SUBJECT TO CHANGE AND THE CONTROLLING ENGINEERING ORGANIZATION SHOULD BE CONTACTED FOR THE LATEST REVISION.</small>		TE TE Connectivity	
DIMENSIONS: MM 		NAME RECEPTACLE .250 FASTON P.C.B (FOR RELAY)	
TOLERANCES UNLESS OTHERWISE SPECIFIED: 0 <XX<10 ± 0.2 10<XX<30 ± 0.25 30<XX<100 ± 0.3 ANGLES ± 3°		PRODUCT SPEC: - APPLICATION SPEC: - WEIGHT: -	
MATERIAL: SEE TABLE FINISH: SEE TABLE		SIZE: A3 CAGE CODE: 00779 DRAWING NO: C=8 5 0 4 8 RESTRICTED TO: -	
CUSTOMER DRAWING		SCALE: 5/1 SHEET 1 OF 2 REV J	

4

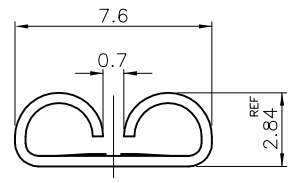
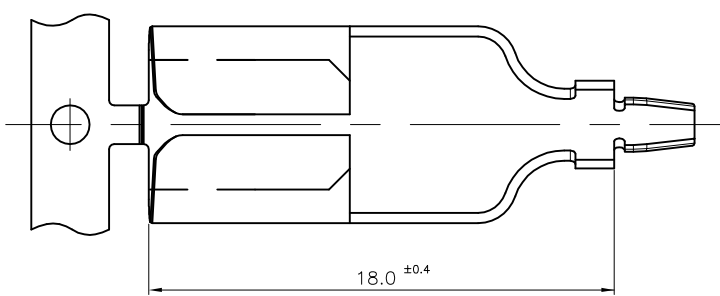
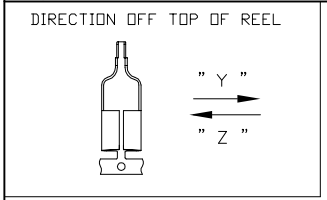
3

2

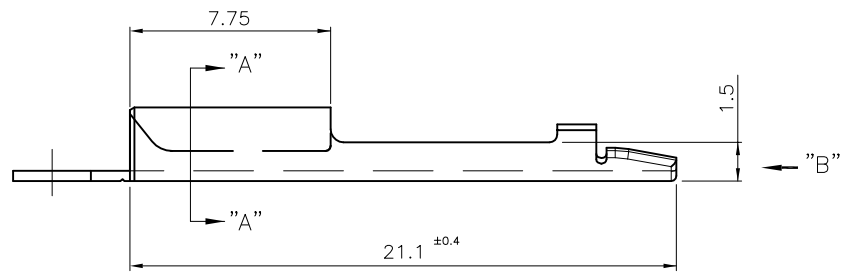
1

THIS DRAWING IS UNPUBLISHED. RELEASED FOR PUBLICATION
 © COPYRIGHT BY TYCO ELECTRONICS CORPORATION, ALL RIGHTS RESERVED.

LOC		DIST		REVISIONS			DATE	DWN	APVD
P	LTR	DESCRIPTION							
-	-	SEE SHEET 1/2			-	-	-	-	



SECTION "A-A"



VIEW "B-B"
scale=10/1

" Z "	POST-TIN PL.	CuNiSi Alloy 0.4THK.	1-85048-4	
" Y "	PLAIN		1-85048-3	
" Z "	POST-TIN PL.	CuNiSi Alloy 0.4THK.	1-85048-2	
" Y "	PLAIN		1-85048-1	
TOP OF REEL		FINISH	MATERIAL	PART NUMBER

<small>THIS DRAWING IS A CONTROLLED DOCUMENT FOR TYCO ELECTRONICS CORPORATION IT IS SUBJECT TO CHANGE AND THE CONTROLLING ENGINEERING ORGANIZATION SHOULD BE CONTACTED FOR THE LATEST REVISION.</small>		DWN -				
DIMENSIONS: MM 		CHK -				
TOLERANCES UNLESS OTHERWISE SPECIFIED: 0 <XX<10 ± 0.2 10<XX<30 ± 0.25 30<XX<100 ± 0.3 ANGLES ± 3°		APVD -	NAME			
MATERIAL		PRODUCT SPEC -	RECEPTACLE .250 FASTON P.C.B (FOR RELAY)			
FINISH		APPLICATION SPEC	SIZE	CAGE CODE	DRAWING NO	RESTRICTED TO
SEE TABLE		WEIGHT	A3	00779	C=8 5 0 4 8	-
CUSTOMER DRAWING			SCALE 5/1	SHEET 2	OF 2	REV J