

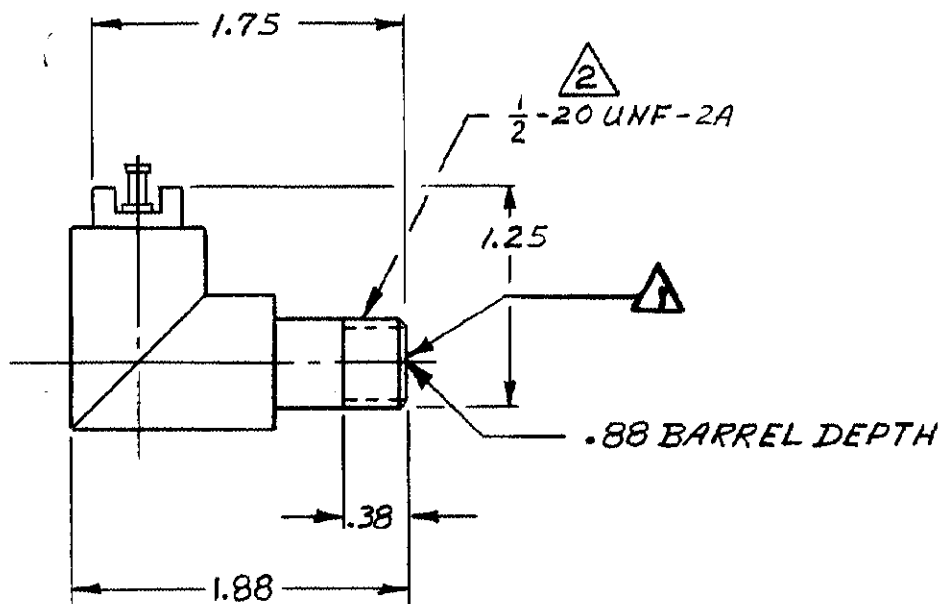
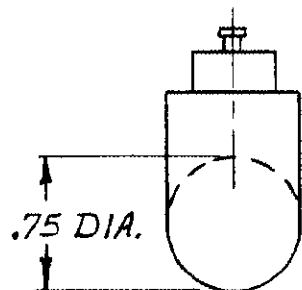
DRAWING MADE IN AMERICAN PROJECTION

©1979 BY AMP INCORPORATED. ALL RIGHTS RESERVED. AMP PRODUCTS COVERED BY PATENTS AND/OR PATENTS PENDING.

THIS PRODUCT DESIGNED AND BUILT BY AMP INCORPORATED. NO LICENSE TO USE THAT DESIGN IN MANUFACTURE, OR TO USE ANY ISSUED OR PENDING PATENTS WHICH ARE INVOLVED, IS IMPLIED.

REVISIONS

ZONE	LTR	DESCRIPTION	DATE	APPROVED
A		REVISED	LJS 12-30-69	MIB
B		REVISED NOTE 1	LAB 10-17-73	LPA
C		UP-DATED ECN 8354	R.G.R. 8-14-78	M.G.
D		REV PER ECN S-3960	4-13-87	R.B.



△ RECEPTACLE TO MATE WITH AMP LGH-1 LEAD ASSEMBLY. AVAILABLE SEPARATELY.

△ PER FEDERAL STANDARDS H-28 3 WIRE METHOD. DIMENSION OVER WIRES TO BE: .497-.510.

849668-2 AS SHOWN WITH GOLD PLATED PIN

849668-1 AS SHOWN WITH TIN PLATED PIN.

QTY REQD	QTY REQD	ITEM NO.	DWG SIZE	PART OR IDENTIFYING NO.	NOMENCLATURE OR DESCRIPTION	SYMBOL
-2	-1					

PARTS LIST

				UNLESS OTHERWISE SPECIFIED: DIMENSIONS ARE IN INCHES TOLERANCES .00 = ±.04 ANGLES = .000 = .015 T	CONTRACT NO. DR <i>L. Heib 5-3-69</i> CHK APPD <i>Ken K. 5-16-69</i> APPD DSGN APPD OTHER APPD	AMP INCORPORATED CAPITRON DIVISION ELIZABETHTOWN, PENNSYLVANIA NAME "L" RECEPTACLE LGH-1		
				MATERIAL: GLASS EPOXY MOLDED	SIZE B	CODE IDENT NO. 00779	NUMBER 849668	
				FINISH: BLACK	SCALE		WT	SHEET 1 of 1
NEXT ASSY	FINAL ASSY	NEXT ASSY	USED ON					
QTY REQD	APPLICATION							

PRINT DIST
L 37