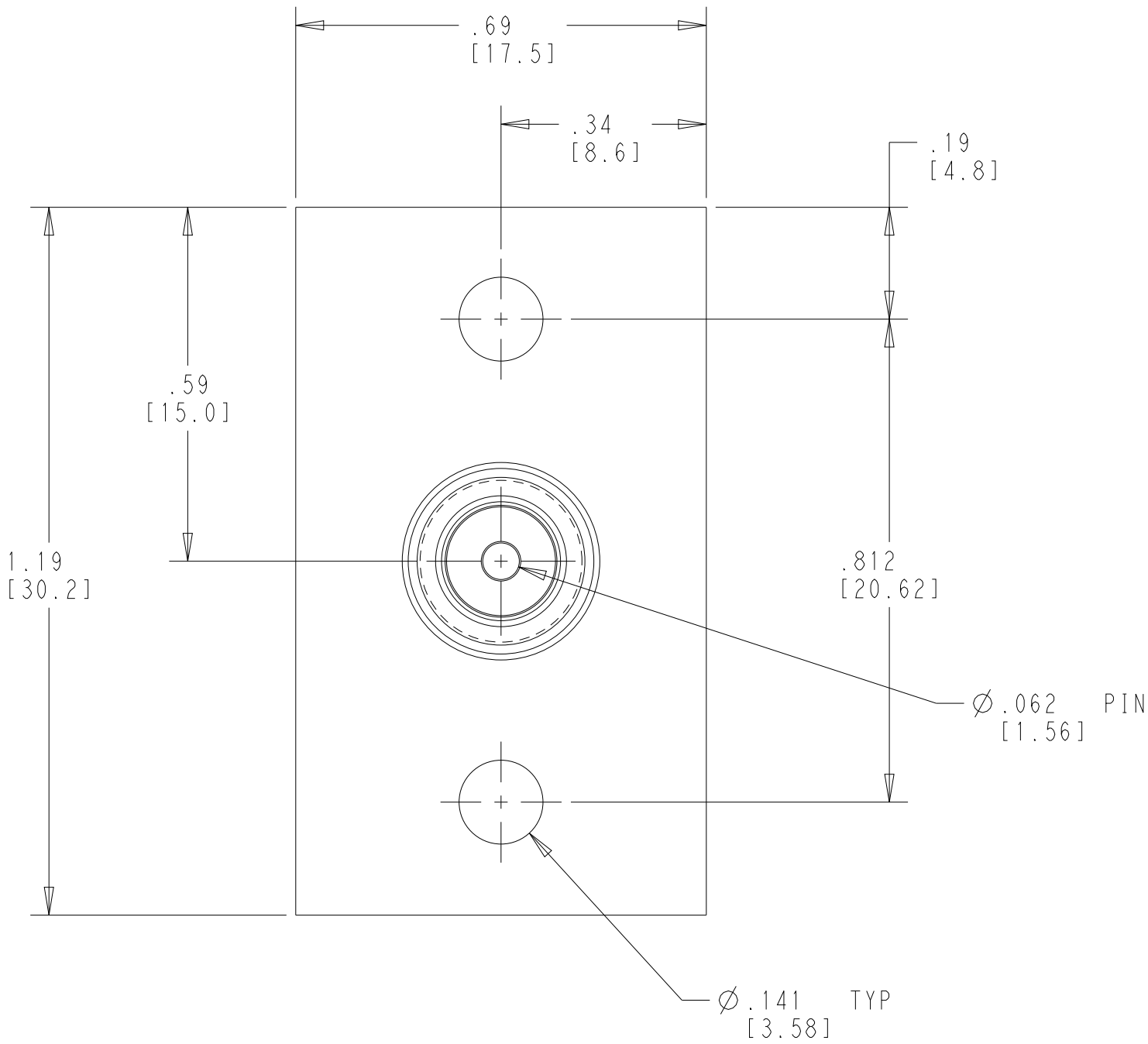
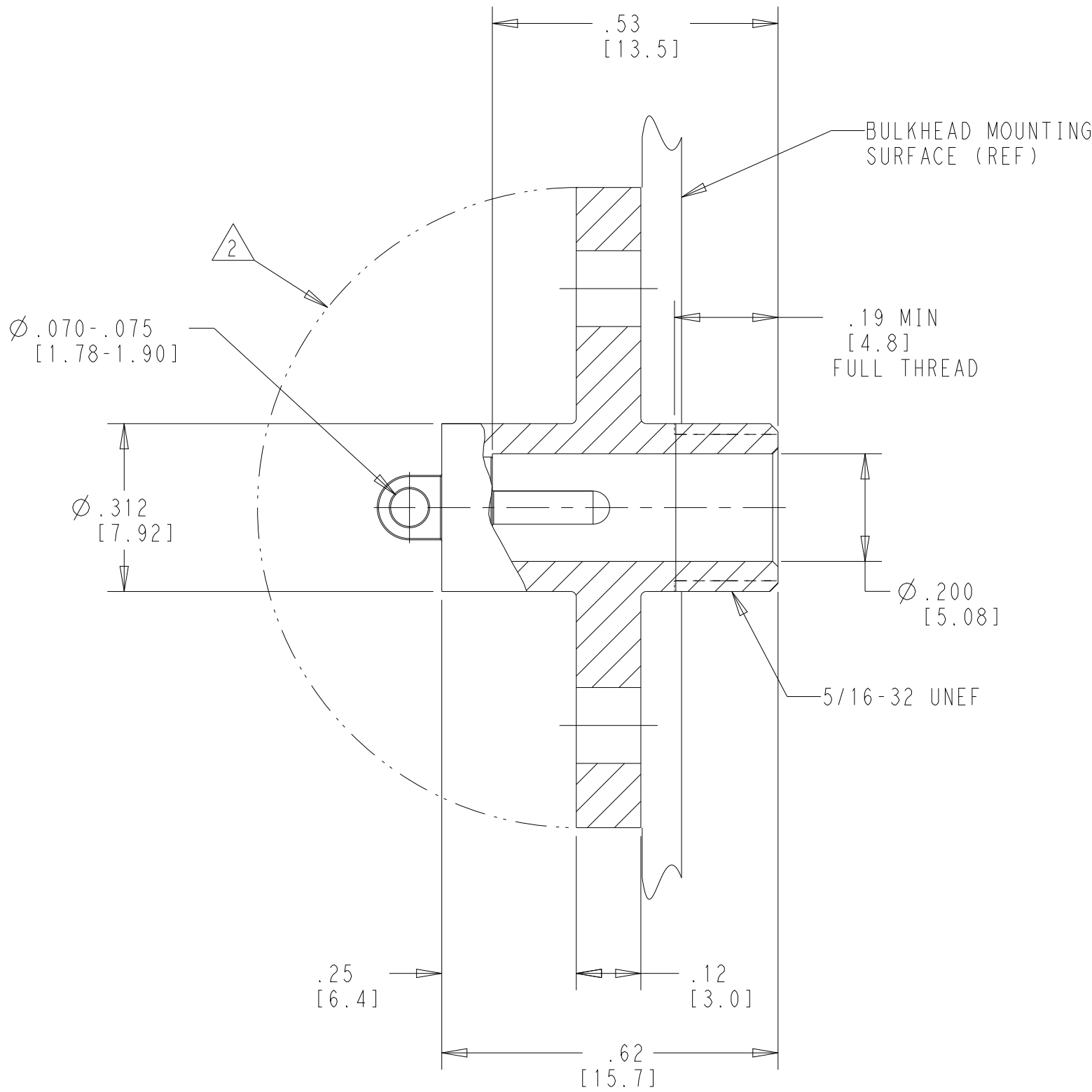


WARNING - THIS DOCUMENT CONTAINS TECHNOLOGY WHOSE EXPORT IS RESTRICTED BY THE EXPORT ADMINISTRATION REGULATIONS ("EAR") PURSUANT TO 15 C.F.R. PARTS 730-774. VIOLATIONS OF THE EAR ARE SUBJECT TO SEVERE CRIMINAL PENALTIES UNDER THE EXPORT CONTROL REFORM ACT, AS AMENDED (TITLE 50, U.S.C., SEC. 4801, ET SEQ.).

REVISIONS					
P	LTR	DESCRIPTION	DATE	DWN	APVD
	K	REV PER ECN-24-285551	24SEP2024	JAB	RL



1. RECEPTACLE TO MATE WITH TE LGH-1/2 LEAD ASSEMBLY AVAILABLE SEPARATELY.
- 2 IF BULKHEAD AND MOUNTING HARDWARE ARE METALLIC AND AT GROUND POTENTIAL, PROVISIONS MUST BE MADE TO PROTECT THE RECEPTACLE'S BACK-END AGAINST ARC-OVER AND BREAKDOWN.

TIN	5-830395-1
GOLD	830395-2
TIN-LEAD	830395-1
TERMINAL PLATING	PART NUMBER

THIS DRAWING IS A CONTROLLED DOCUMENT.		DWN J.A.BAKER 24SEP2024	TE Connectivity			
DIMENSIONS:		CHK R.LACUESTA 24SEP2024				
TOLERANCES UNLESS OTHERWISE SPECIFIED:		APVD R.LACUESTA 24SEP2024	NAME FLANGED RECEPTACLE ASSEMBLY LGH-1/2			
0 PLC ±		PRODUCT SPEC	SIZE A2		CAGE CODE 00779	
1 PLC ±		APPLICATION SPEC	DRAWING NO C-830395		RESTRICTED TO	
2 PLC ±.02[0.5]		WEIGHT 5 GRAMS MAX	SCALE 4:1		SHEET 1 OF 1	
3 PLC ±.010[0.25]		CUSTOMER DRAWING	REV K			
4 PLC ±						
ANGLES ±						
FINISH						
MATERIAL EPOXY MLDG CMPD						
COLOR: BLACK						