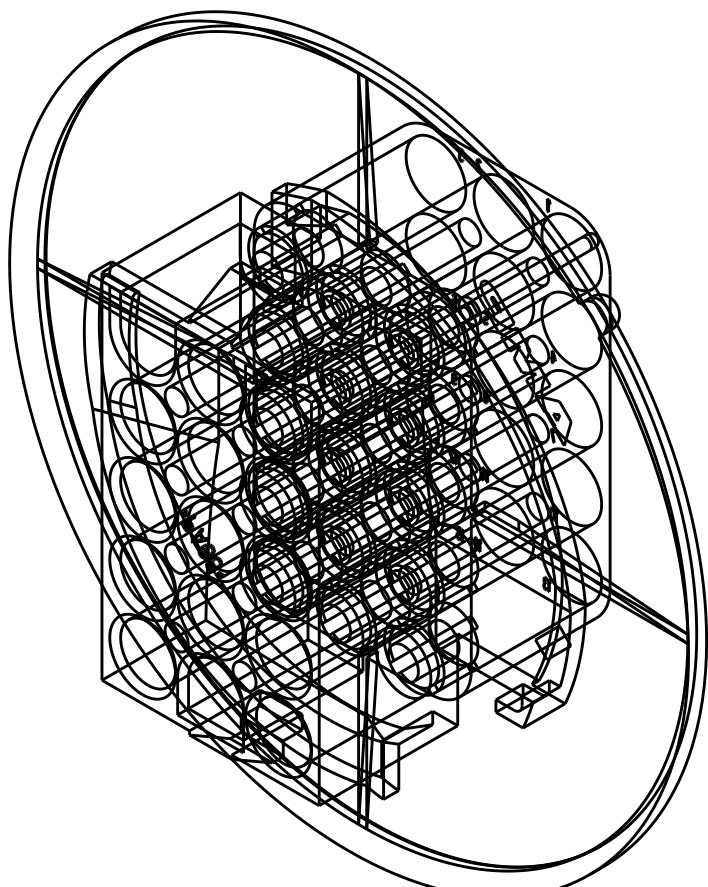
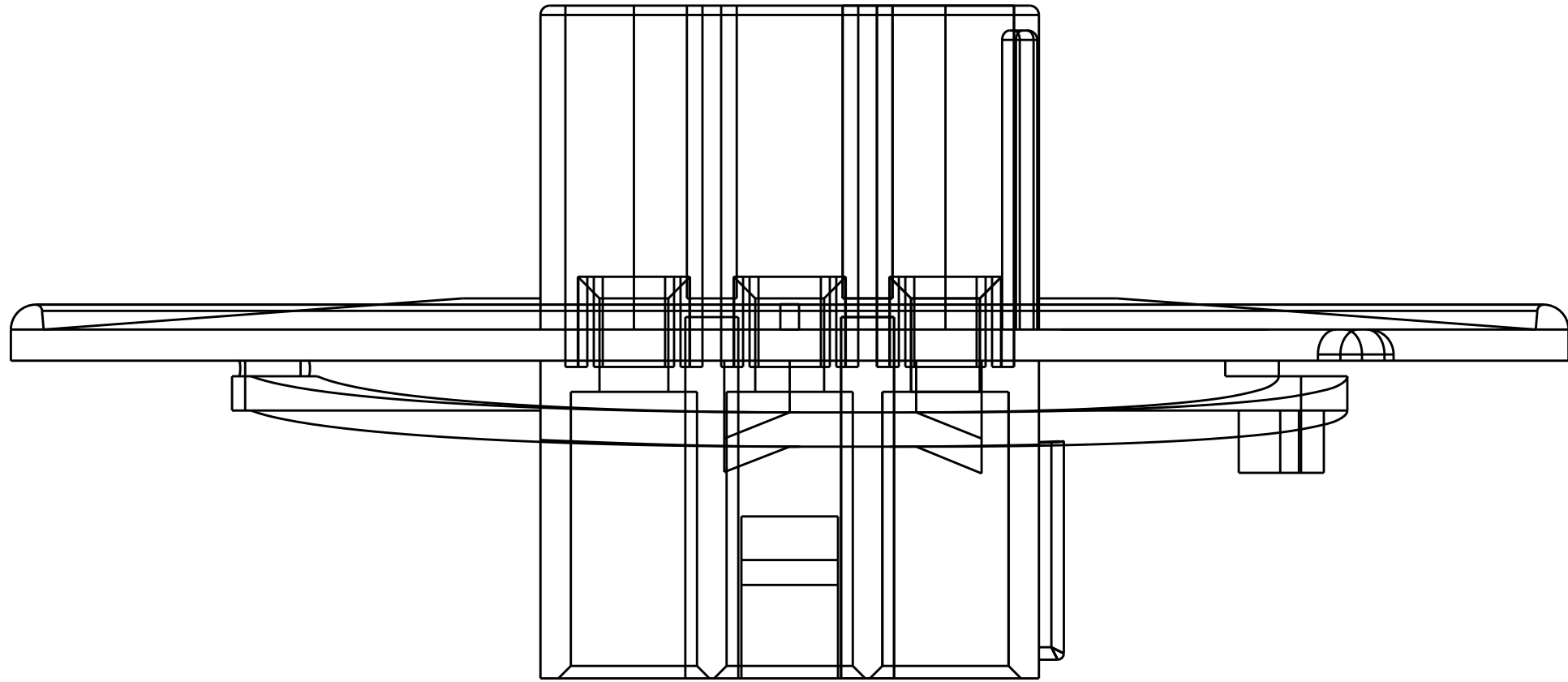
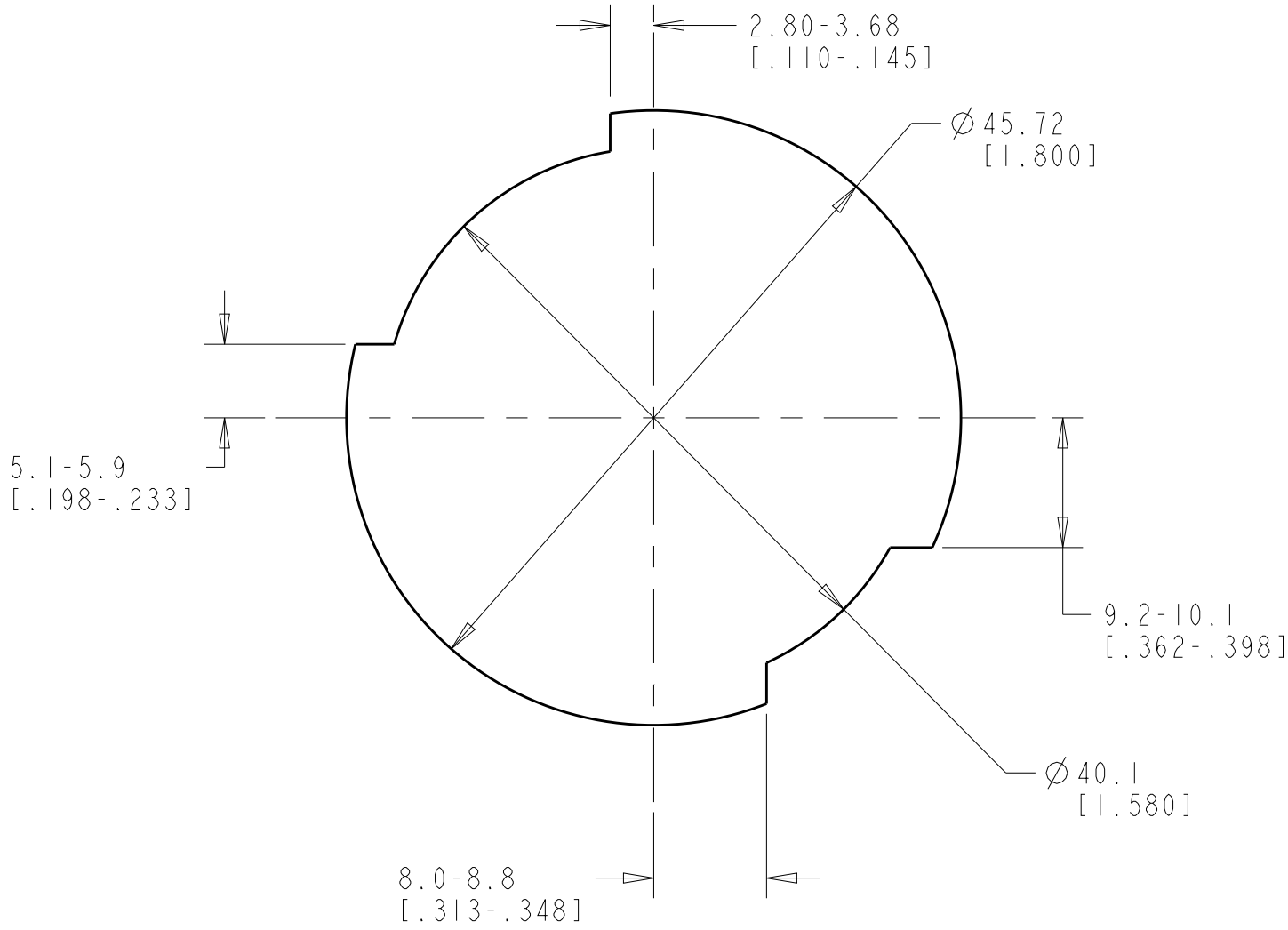


LOC		DIST		REVISIONS					
CM		53		P	LTR	DESCRIPTION	DATE	DWN	APVD
				4		REVISED PER ECO-17-011927	23AUG2017	RS	KR

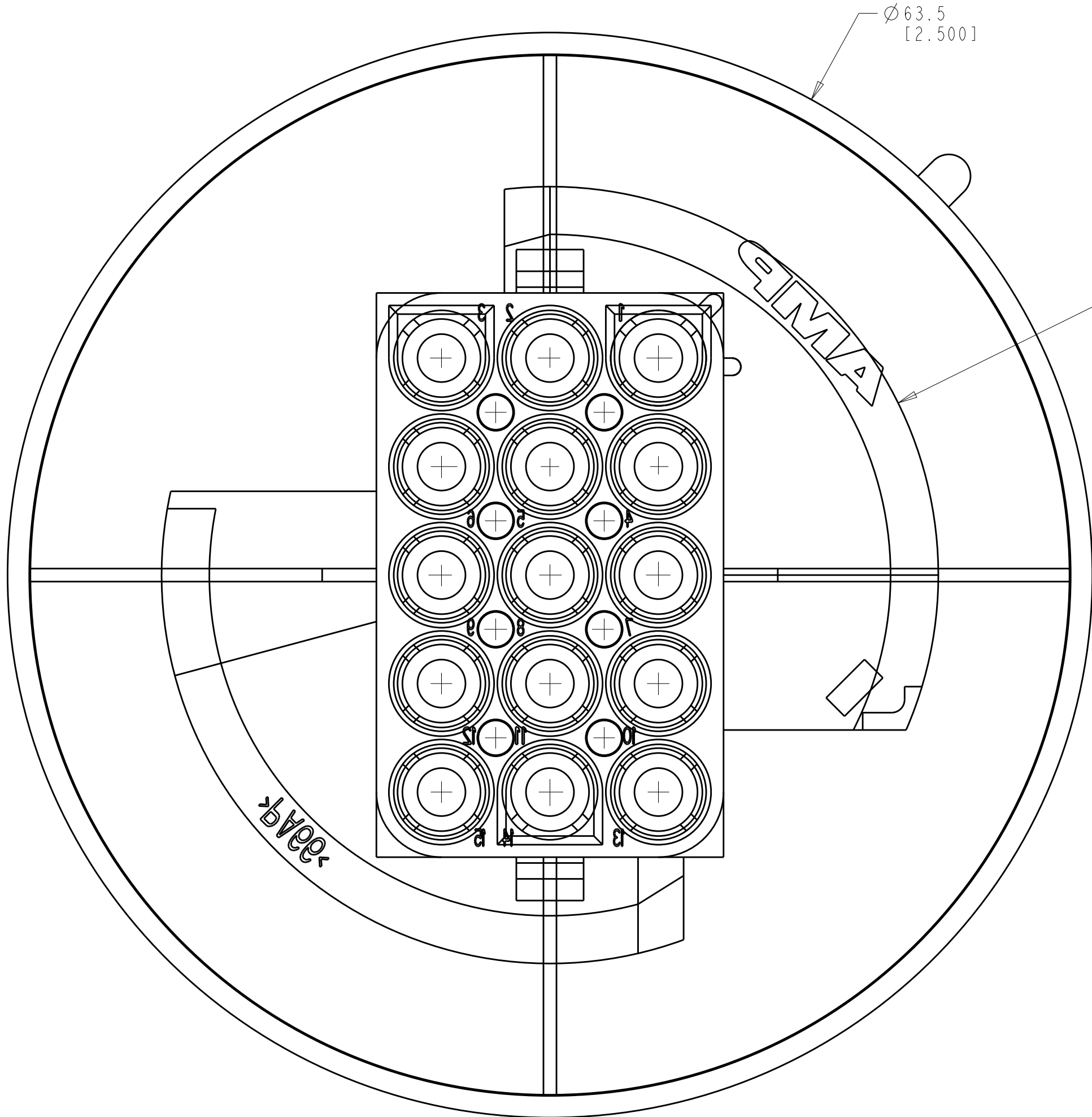


3-DIMENSIONAL MODEL
SCALE 2:1

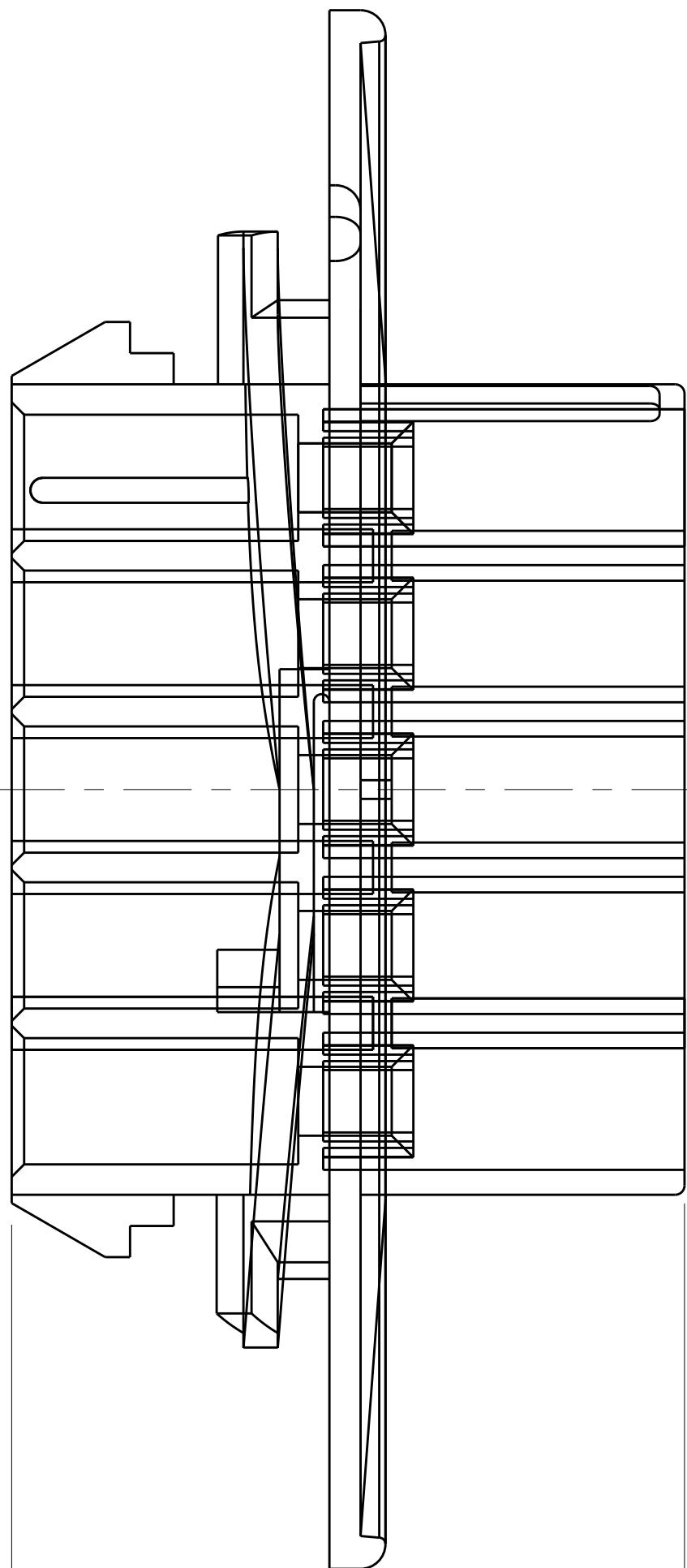


RECOMMENDED CUT OUT
SCALE 2:1

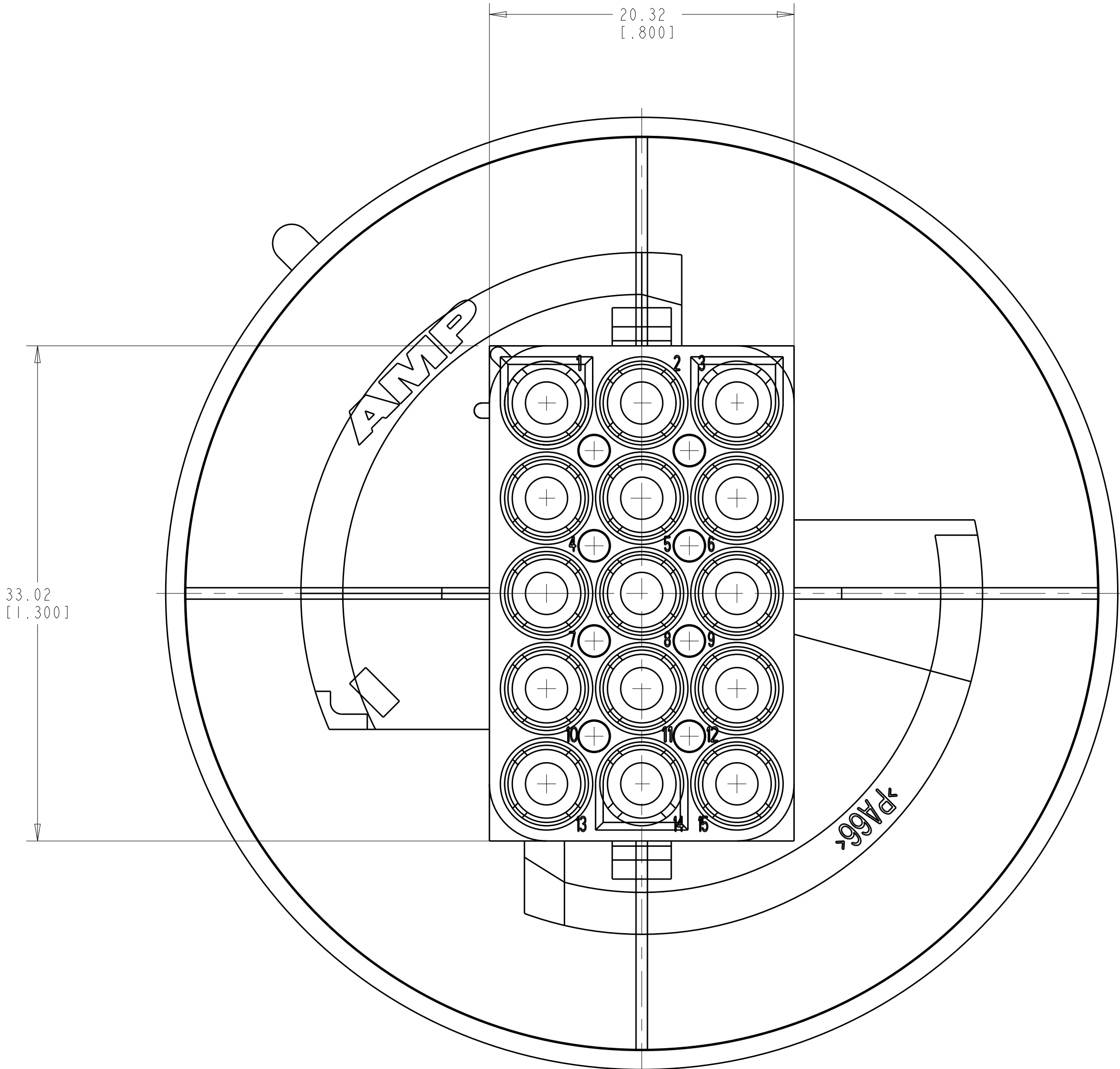
1. MATES WITH APPROPRIATE UNIVERSAL MATE-N-LOK™ PLUG.
2. RECOMMENDED PANEL THICKNESS 0.76 - 2.29 [.030 - .090].
3. PANEL MUST BE PUNCHED SO THAT THE HOUSING ENTERS THE PANEL IN THE SAME DIRECTION AS THE PUNCH.
4. DIMENSIONS SHOWN REPRESENT PRODUCT IN DRY, AS MOLDED CONDITION ADDITIONAL 2% GROWTH DUE TO SUBSEQUENT MOISTURE ABSORPTION MAY OCCUR AND SHOULD BE ACCOUNTED FOR.



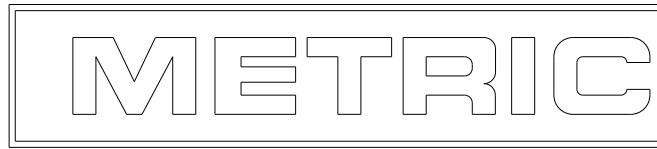
R22.73
[.895]
2 PLC



27.43
[1.080]



PRELIMINARY
NOT RELEASED FOR PRODUCTION



1ST FORMERLY IT - CONNEXION TECHNOLOGY FOR TYCO ELECTRONICS CORPORATION IT IS SUBJECT TO CHANGE AND TO BE USED BY THE CUSTOMER'S ORGANIZATION SHOULD BE CONTACTED FOR THE LATEST NOTATION				DWN R. WHITAKER 11OCT2004	tyco Electronics		AMP Incorporated Harrisburg, PA 17105-3608		
DIMENSIONS: mm[INCHES]				CHK S. RIDGILL 11OCT2004	NAME		CAP, 15 CIRCUIT, UNIVERSAL MATE-N-LOK(TM), SPECIAL		
TOLERANCES UNLESS OTHERWISE SPECIFIED:				APVD S. RIDGILL 11OCT2004	PRODUCT SPEC		SIZE		
0 PLC ±				APPLICATION SPEC		CAGE CODE		DRAWING NO	
1 PLC ±				WEIGHT		A		00779	
2 PLC ±				FINISH		C=794830		REV	
3 PLC ±				CUSTOMER DRAWING		SCALE		4:1	
4 PLC ±				SHEET		1		OF	
ANGLES ±				REV		4			
FINISH ±									