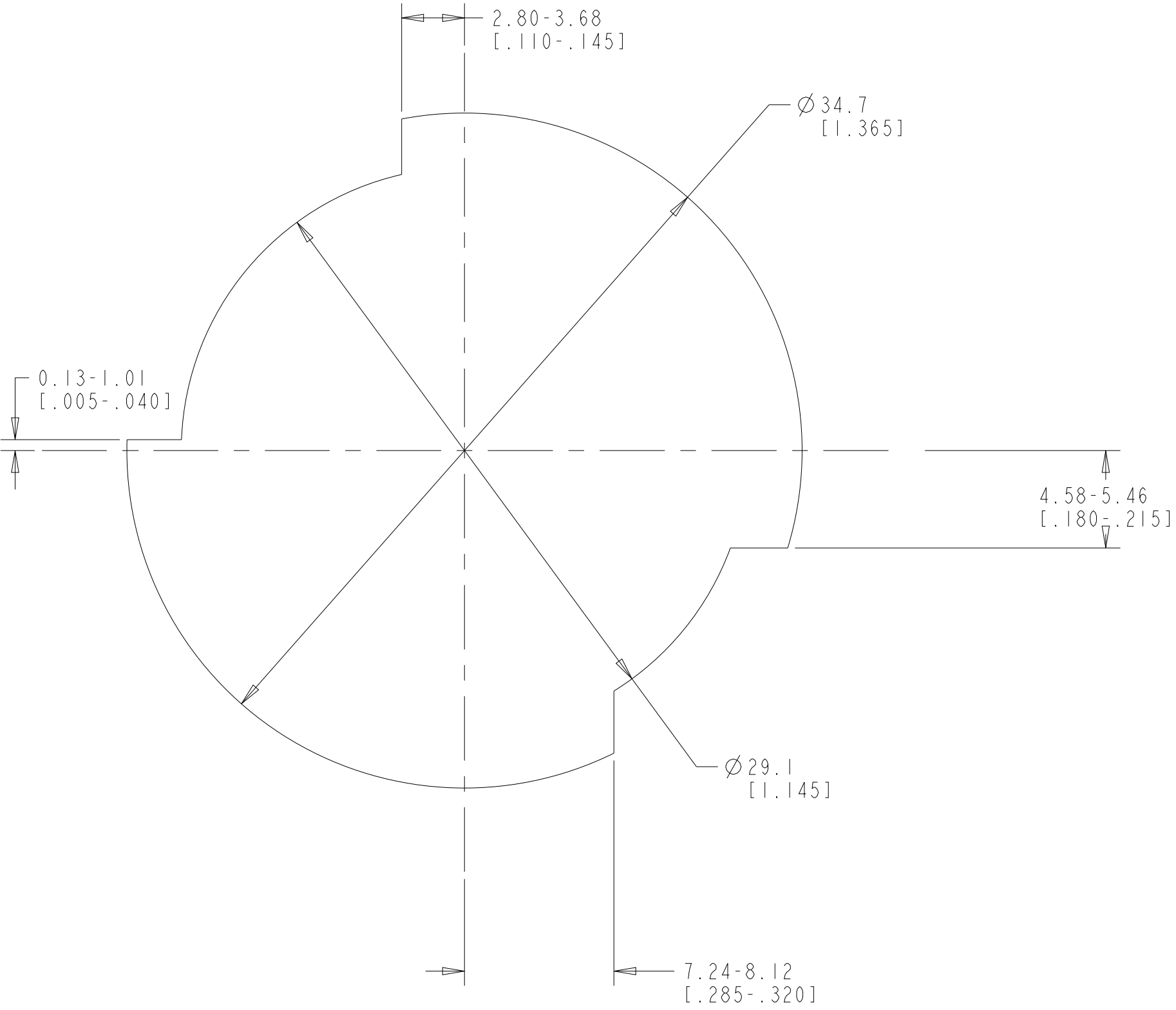


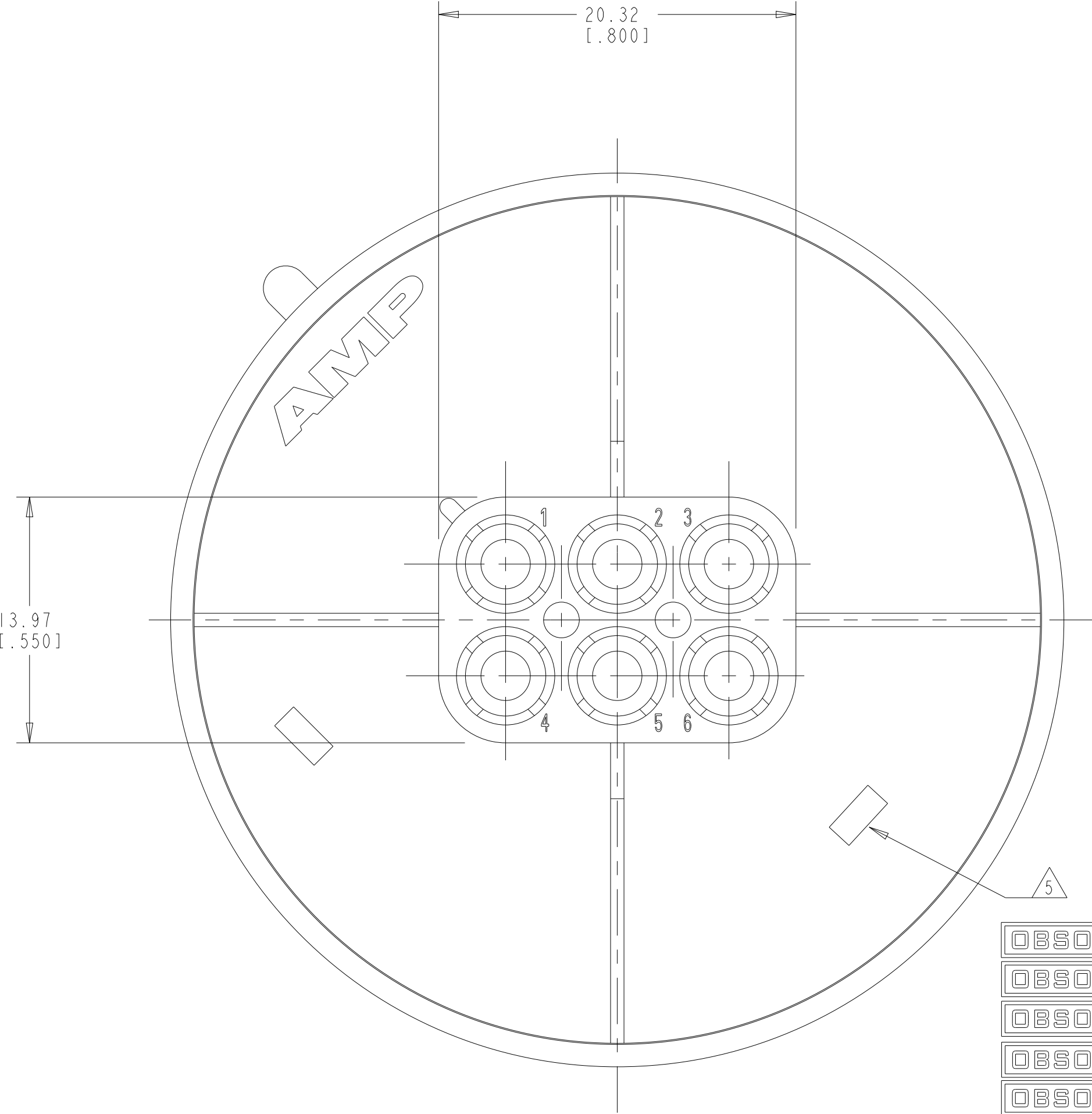
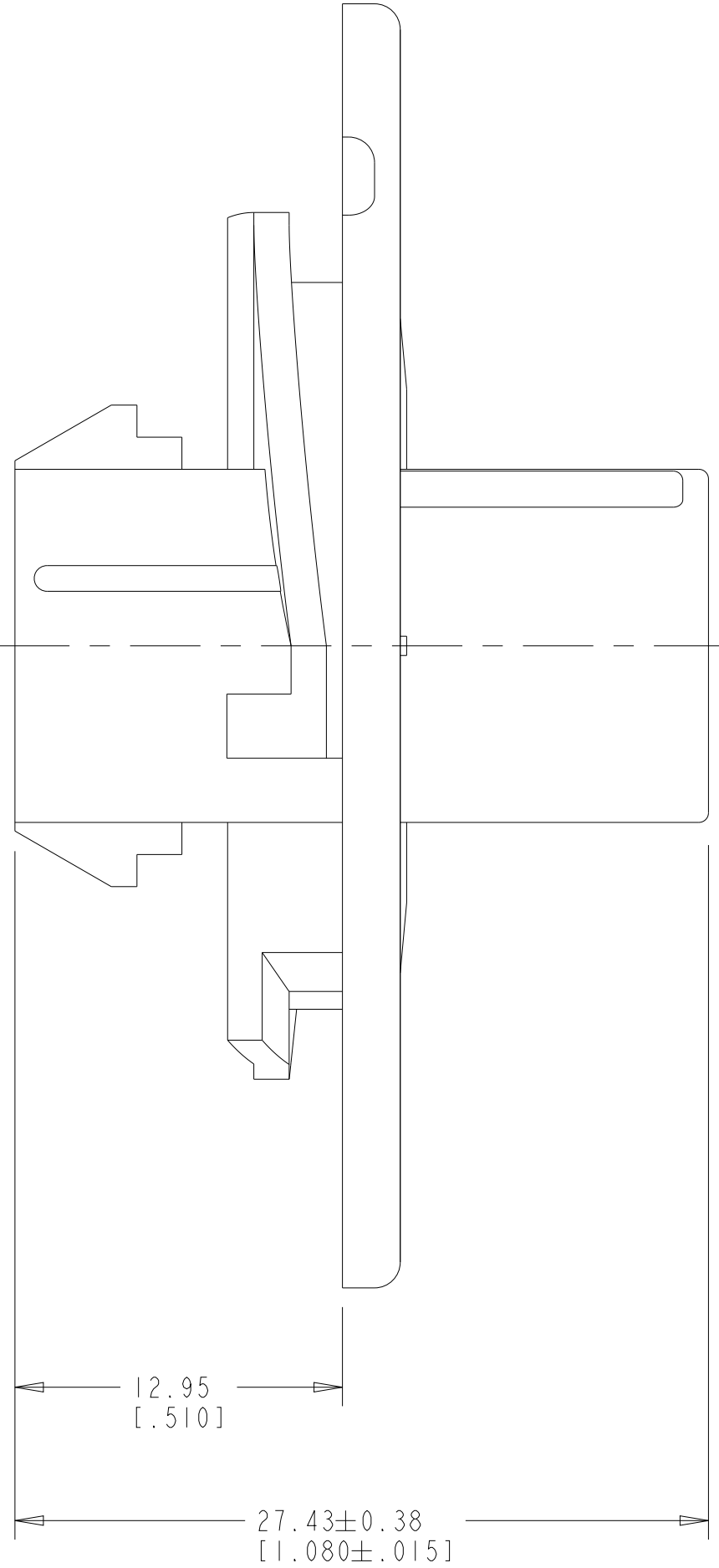
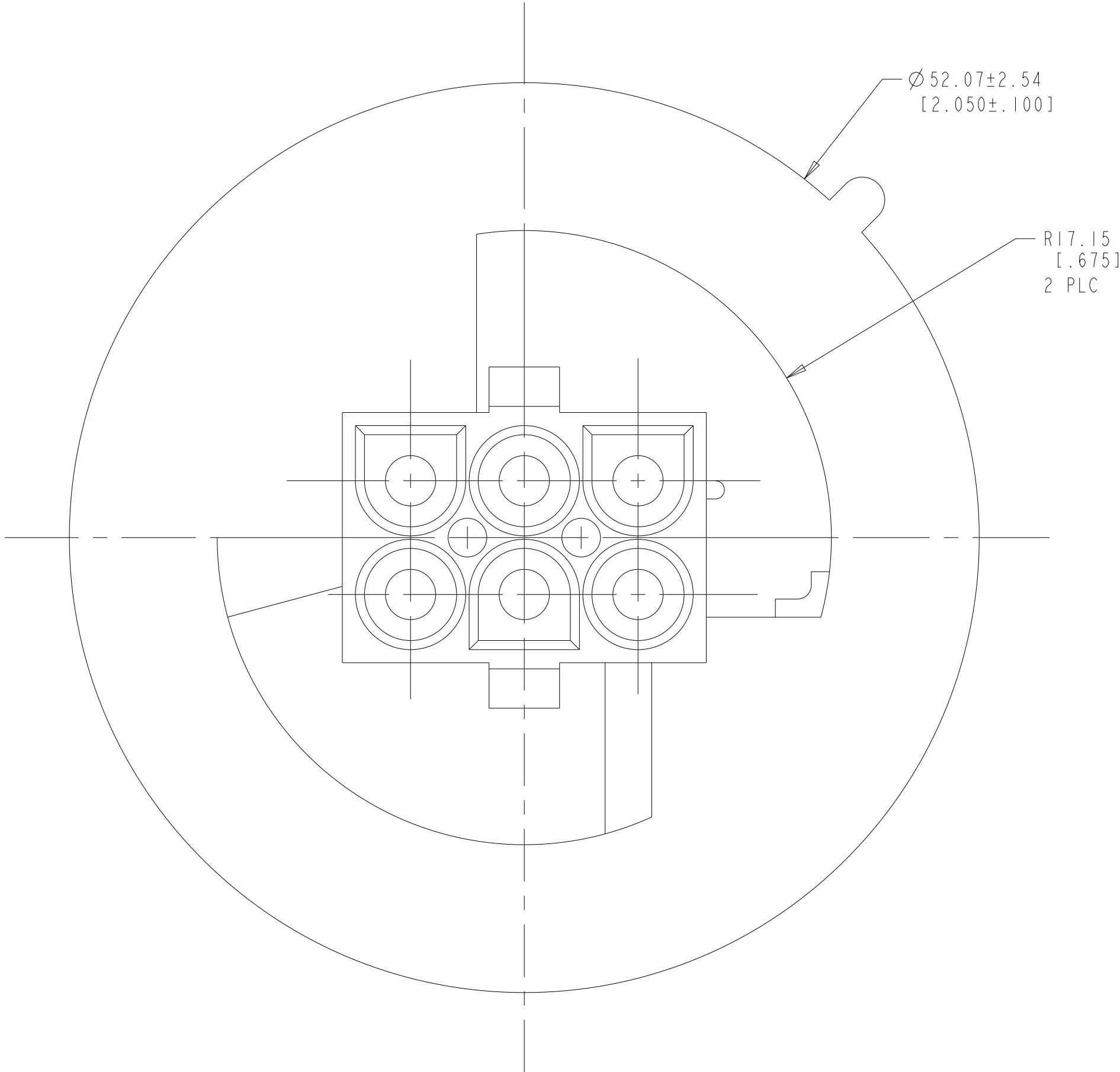
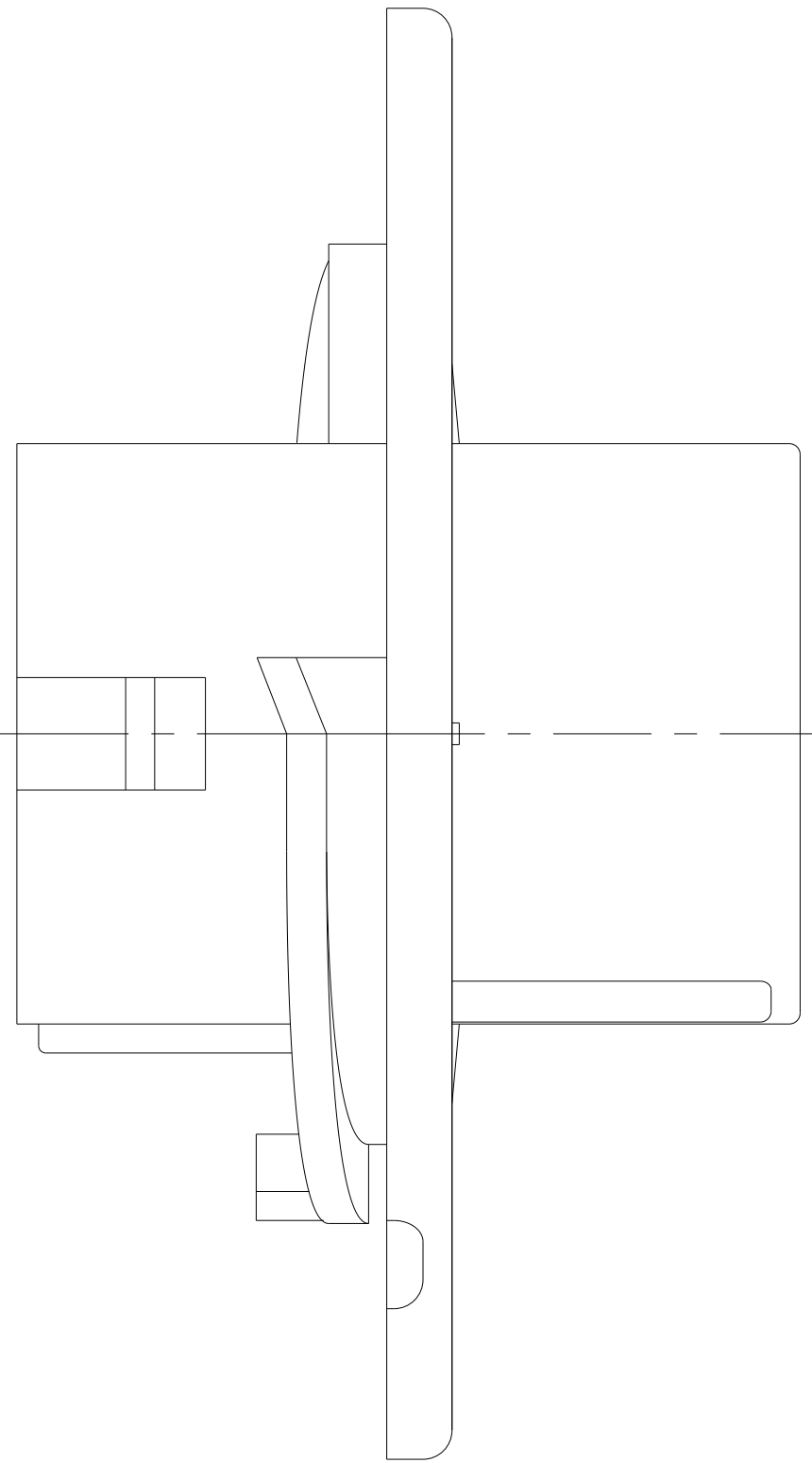
LOC		DIST		REVISIONS					
CM	00	P	LTR	DESCRIPTION		DATE	DWN	APVD	
		F		REVISED PER ECR-17-015775		03NOV2017	BDA	KR	
		G		REVISED PER ECR-21-101882		03MAY2021	PC	JS	
		GI		REVISED PER ECR-24-224610		10MAR2025	AK	BR	

1. MATES WITH APPROPRIATE UNIVERSAL MATE-N-LOK™ PLUG.
2. RECOMMENDED PANEL THICKNESS 0.76 - 2.29 [.030 - .090].
3. PANEL MUST BE PUNCHED SO THAT THE HOUSING ENTERS THE PANEL IN THE SAME DIRECTION AS THE PUNCH.
4. DIMENSIONS SHOWN REPRESENT PRODUCT IN DRY, AS MOLDED CONDITION ADDITIONAL 2% GROWTH DUE TO SUBSEQUENT MOISTURE ABSORPTION MAY OCCUR AND SHOULD BE ACCOUNTED FOR.

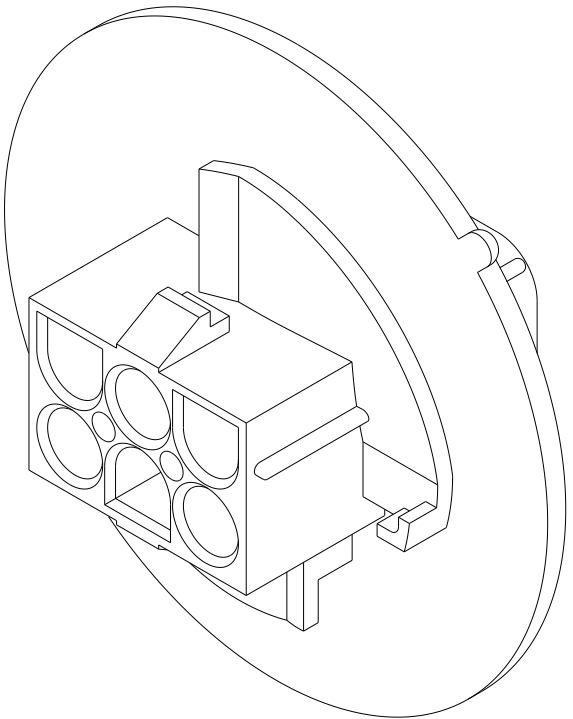
 UL AND CSA LOGOS LOCATED APPROXIMATELY AS SHOWN


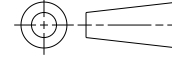


RECOMMENDED CUT OUT



	BLACK	1-794760-9
OBsolete	GRAY	1-794760-8
OBsolete	BLUE	1-794760-6
OBsolete	GREEN	1-794760-5
OBsolete	YELLOW	1-794760-4
OBsolete	ORANGE	1-794760-3
	RED	1-794760-2
	BROWN	1-794760-1
	NATURAL	794760-1
	COLOR	PART NUMBER



THIS DRAWING IS A CONTROLLED DOCUMENT.		DWN K. WHITAKER 20-JUNE-2000	 TE Connectivity		
DIMENSIONS: mm[INCHES]		CHK K. COBLE 20-JUNE-2000			
	TOLERANCES UNLESS OTHERWISE SPECIFIED:		NAME	CAP, 6 CIRCUIT, UNIVERSAL MATE-N-LOK(TM), SPECIAL	
	0 P/LC 2 P/LC 3 P/LC 4 P/LC ANGLES FINISH	± ± ± ± ± ±	PRODUCT SPEC		SIZE
			APPLICATION SPEC		CAGE CODE
	MATERIAL NYLON UL 94V-0, WHITE		WEIGHT	DRAWING NO	RESTRICTED TO
			CUSTOMER DRAWING	A1 00779 C=794760	-
			SCALE	4:1	SHEET 1 OF 1
					REV G