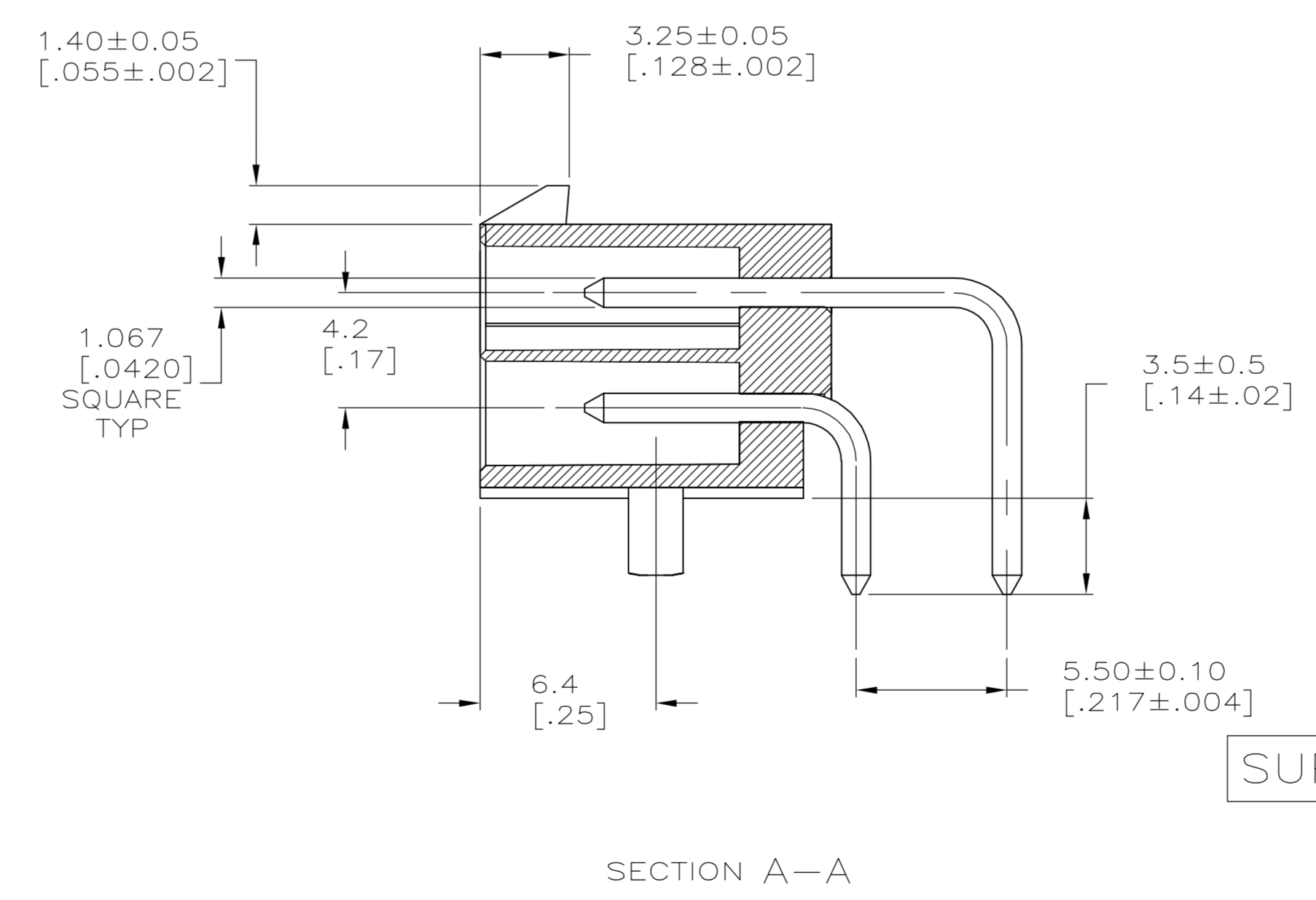
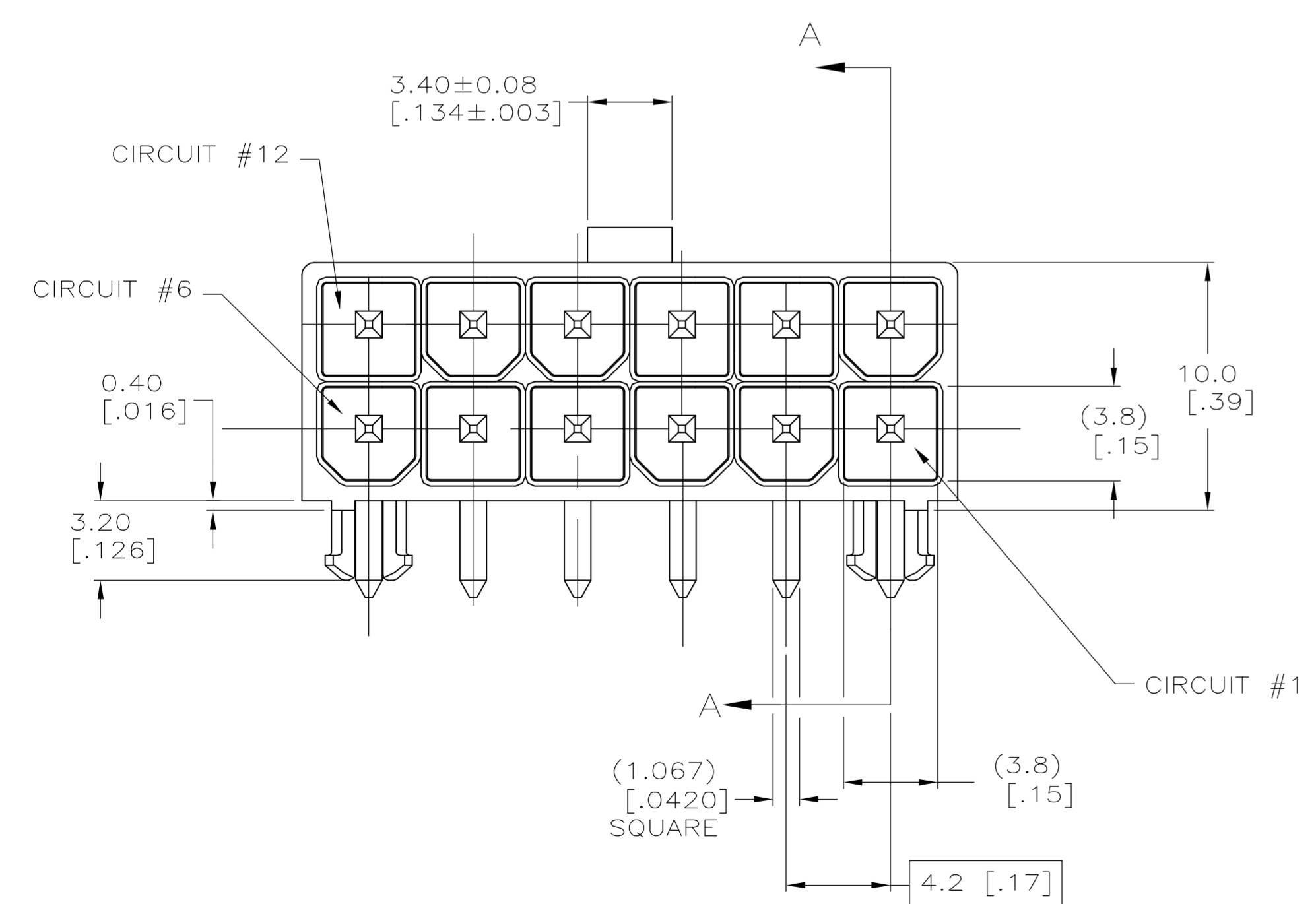
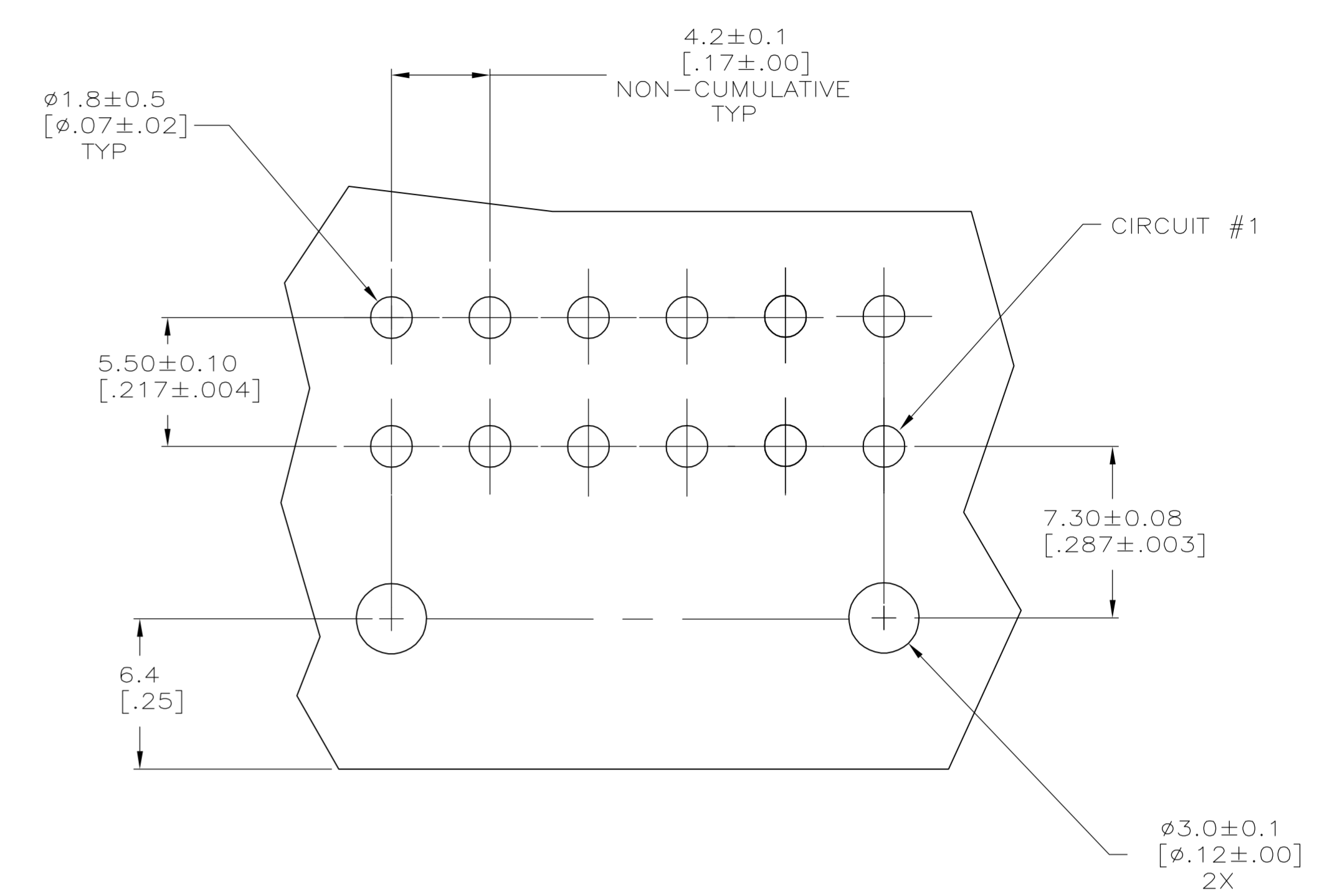
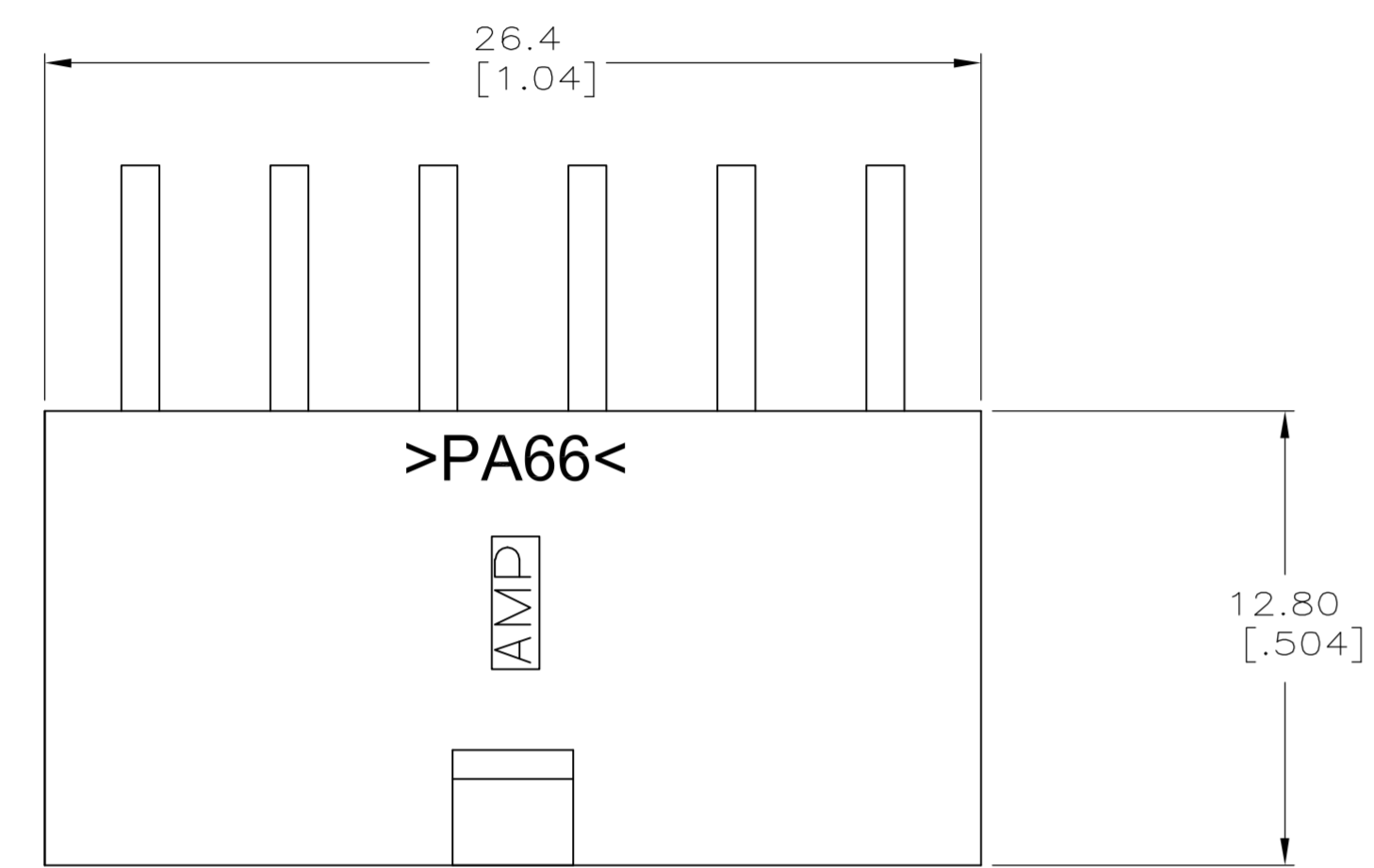


- ① MATERIAL: HOUSING - NYLON, UL94V-2 (COLOR - NATURAL).
PIN - 1.067mm² [.0017in²] COPPER ALLOY.
- 2. PINS TO COMPLY WITH SOLDERABILITY SPEC 109-11-3.
- ③ 0.00381 [.000150] MINIMUM TIN LEAD OVER 0.00127 [.000050] MINIMUM NICKEL, ENTIRE LENGTH OF PIN.
- ④ NOTE DELETED.
- ⑤ 0.00381 [.000150] MINIMUM TIN OVER 0.00127 [.000050] MINIMUM NICKEL, ENTIRE LENGTH OF PIN.



SUPERSEDED BY 1-794511-1

①	⑤	①	①	1-794511-1
①	③	①	①	794511-1
MATERIAL		FINISH		ASSEMBLY
PIN		HOUSING		

METRIC

THIS DRAWING IS A CONTROLLED DOCUMENT.

DIMENSIONS:	TOLERANCES UNLESS OTHERWISE SPECIFIED:	094511-1	02-MAR-2005	tyco	Tyco Electronics Corporation
mm [INCHES]	0 PLC ± 0.2 [0.1]	DWK	02-MAR-2005	D. COLEY	Harrisburg, Pa 17105-3608
	1 PLC ± 0.13 [0.005]	APVD	02-MAR-2005	D. COLEY	
	2 PLC ± 0.13 [0.005]	PRODUCT SPEC			
	3 PLC ± 0.13 [0.005]	NAME			ASSEMBLY, HEADER,
	4 PLC ± 0.13 [0.005]	APPLICATION SPEC			RIGHT ANGLE, 12 POSITION, W/PEGS,
	ANGLES ± 0° 30'	SIZE	CAGE CODE	DRAWING NO	94V-2, AMP-DUACTM POWER CONNECTOR
MATERIAL	FINISH	WEIGHT	A1	00779	©=794511
SEE CHART	SEE CHART	CUSTOMER DRAWING	SCALE	5:1	SHEET 1 OF 1 REV D