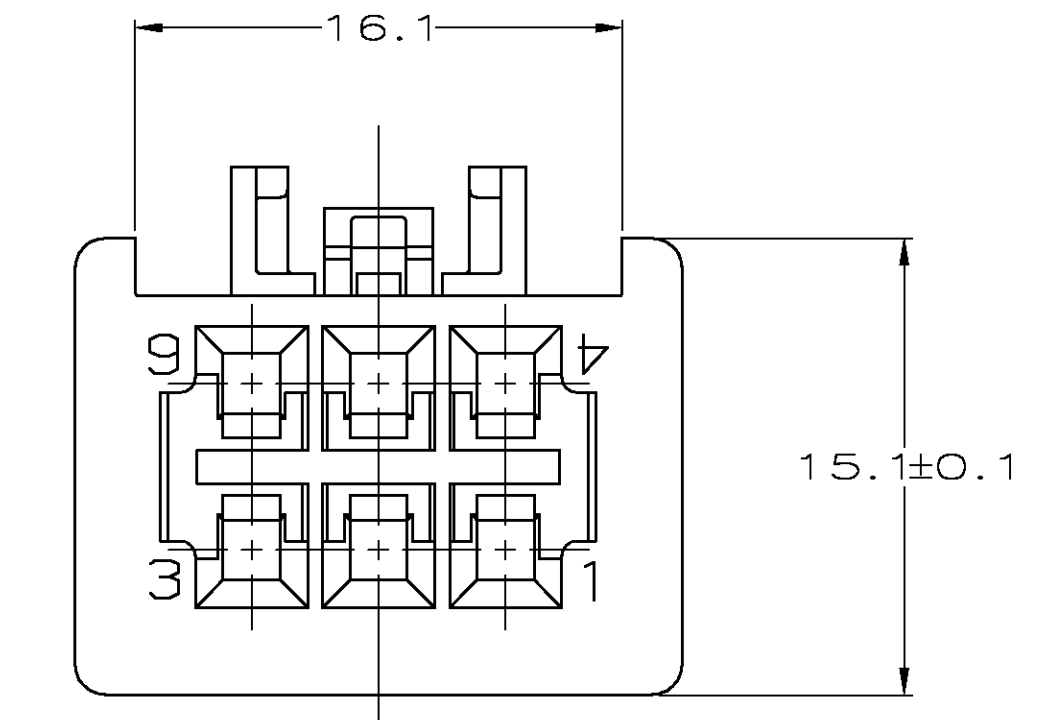
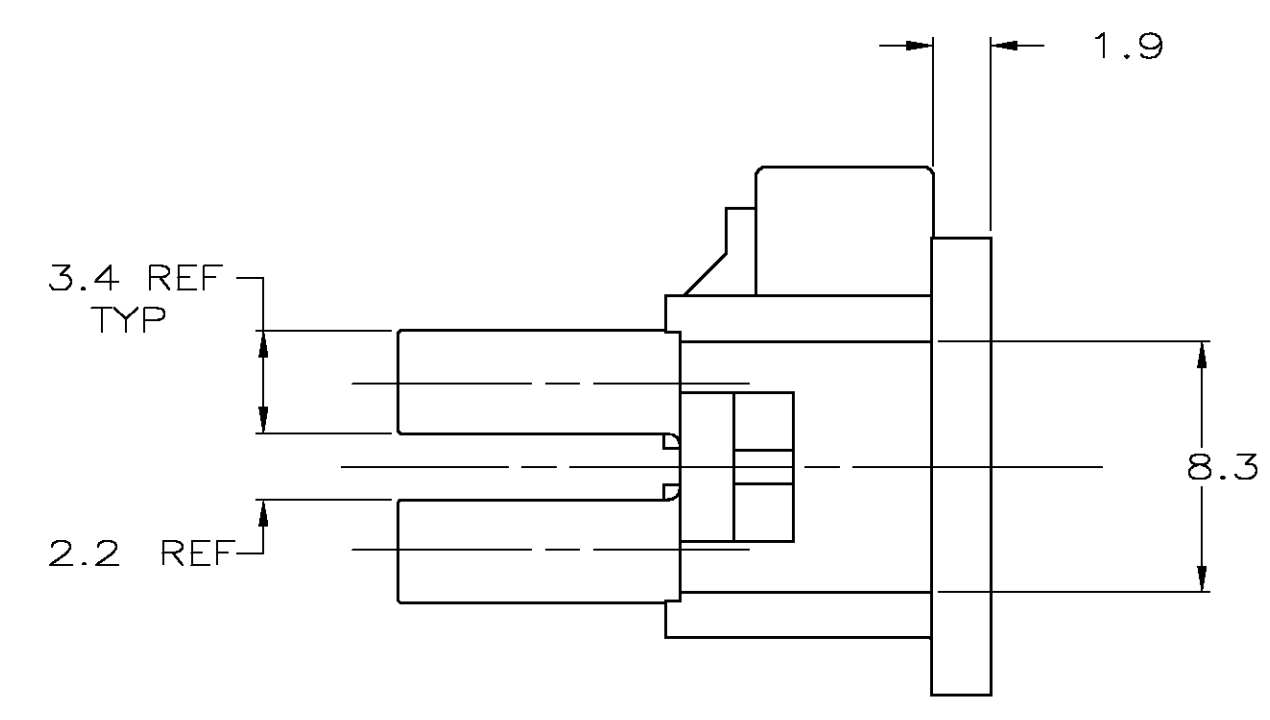
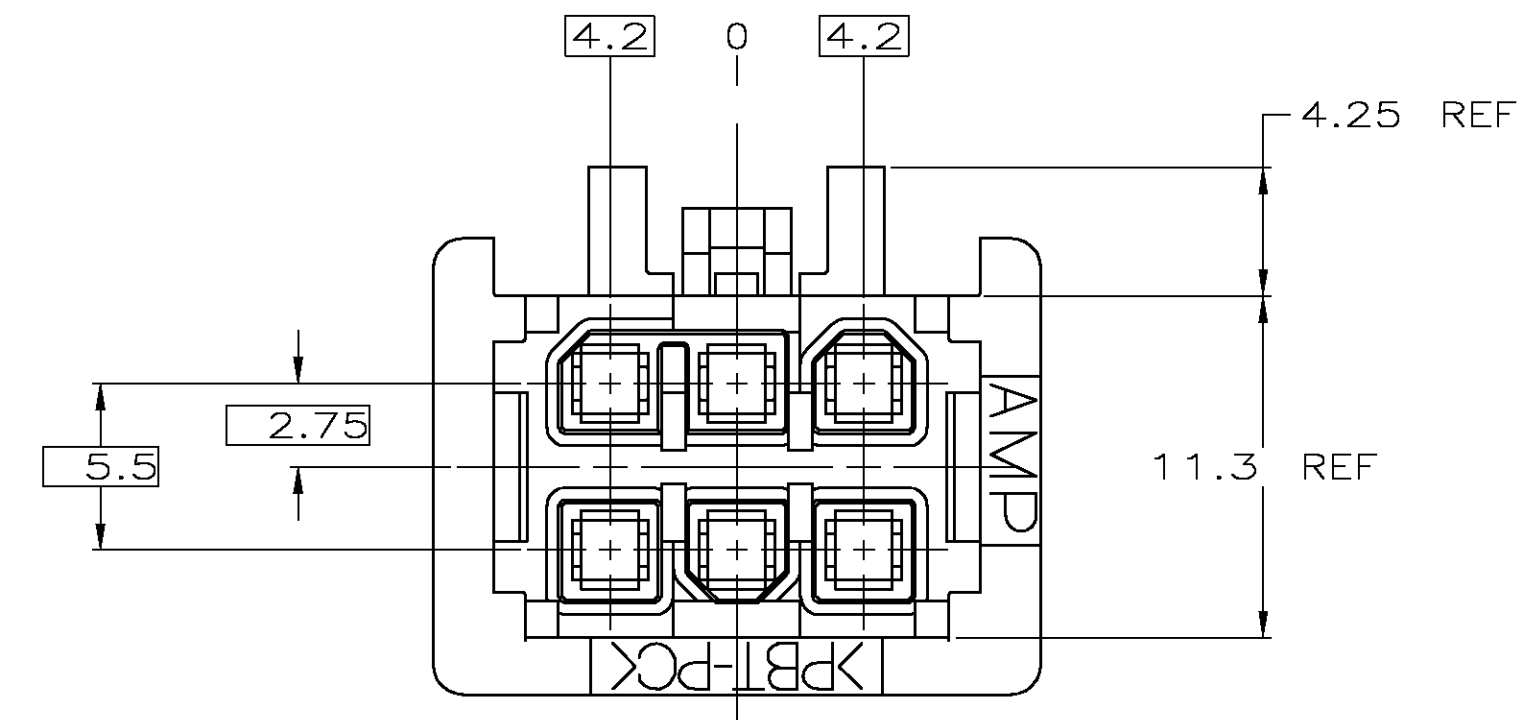
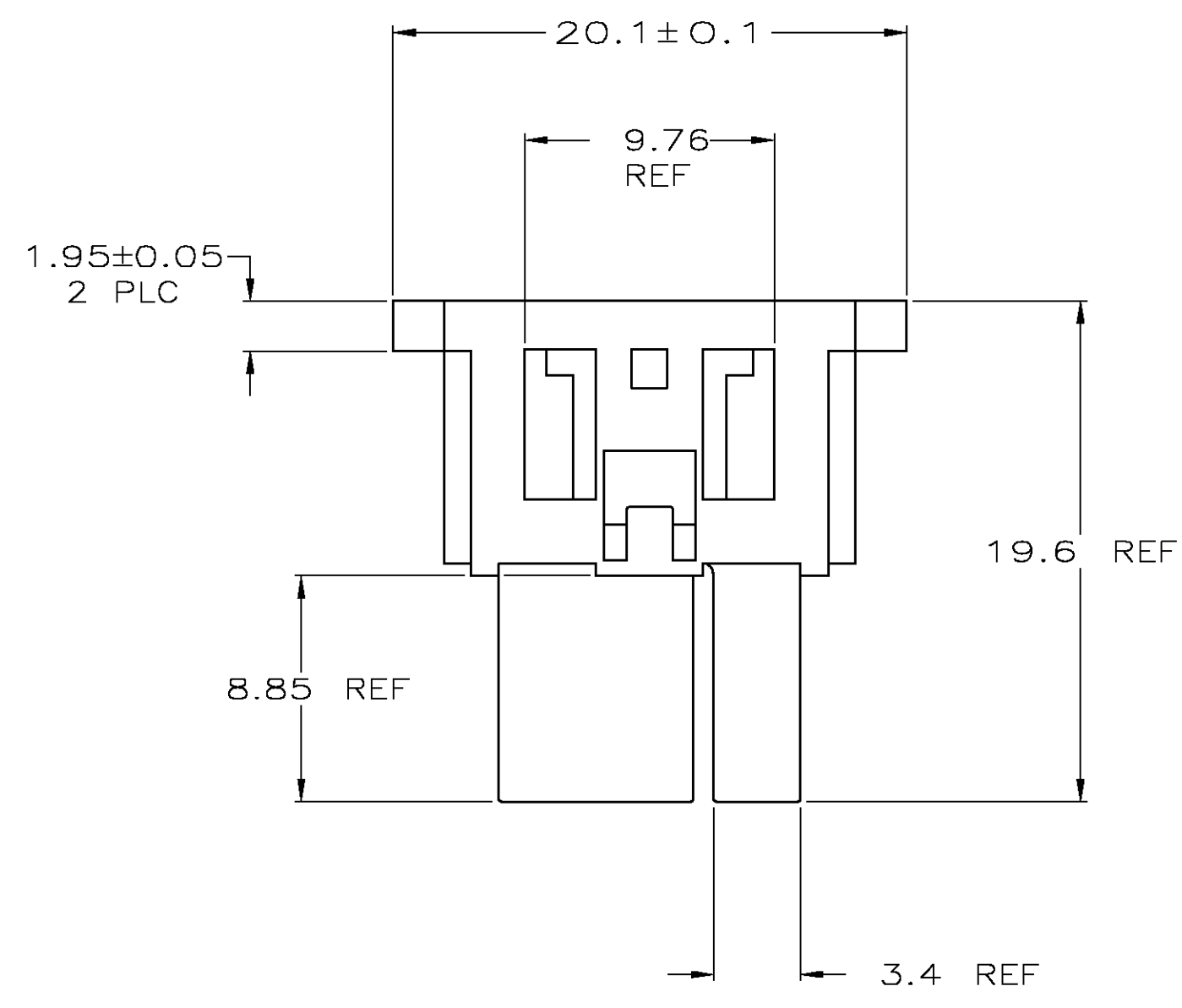


LOC		DIST		REVISIONS			
P	LR	DESCRIPTION	DATE	DN	APPD		
E		REVISED & REDRAWN PER EC 0512-0202-0410	AUG 04	AWF	AWF		



- FOR USE WITH AMP-DUAC™ SOCKET CONTACTS (EX: 794138-2, 794139-2, 794140-2, 794416-1, 794417-1, 794418-1). TERMINAL MUST BE INSERTED INTO RECEPTACLE HOUSING SO THAT THE TOP OF THE WIRE AND INSULATION CRIMPS FACE THE INTERIOR OF THE HOUSING.
- FOR SECONDARY LOCKING OF SOCKET CONTACTS, USE POSITION LOCK 794145-3 (1 REQUIRED).
- RECEPTACLE HOUSING AND POSITION LOCK AVAILABLE AS BULK KIT, P/N 794319-1.
- MATES WITH AMP-DUAC/PL™ 6 CIRCUIT HEADERS, RIGHT ANGLE (EX: 794173-2).
- REQUIRES LATCH ASSEMBLY 794150-1 (STANDARD) OR 794149-1 (EXTENDED).
- KEYING PLUG: 794144-1.

794153-1  
PART NUMBER

METRIC

THIS DRAWING IS A CONTROLLED DOCUMENT.		DN AL FRANTUM 10 AUG 04	 Tyco Electronics Corporation Harrisburg, Pa 17105-3608
DIMENSIONS: mm		DN AL FRANTUM 10 AUG 04	
TOLERANCES UNLESS OTHERWISE SPECIFIED:		APVD	NAME
0 PLC ± -	1 PLC ± 0.2	PRODUCT SPEC	HOUSING, RECEPTACLE
2 PLC ± 0.13	3 PLC ± -	108-1646	6 CIRCUIT,
4 PLC ± -	ANGLES ± -	APPLICATION SPEC	AMP-DUAC/PL POWER CONNECTOR
MATERIAL PBT, UL 94V-0, NAT	FINISH -	114-6067	SIZE CAGE CODE DRAWING NO RESTRICTED TO
		WEIGHT	A1 00779 C=794153
		CUSTOMER DRAWING	SCALE 5:1 SHEET 1 OF 1 REV E