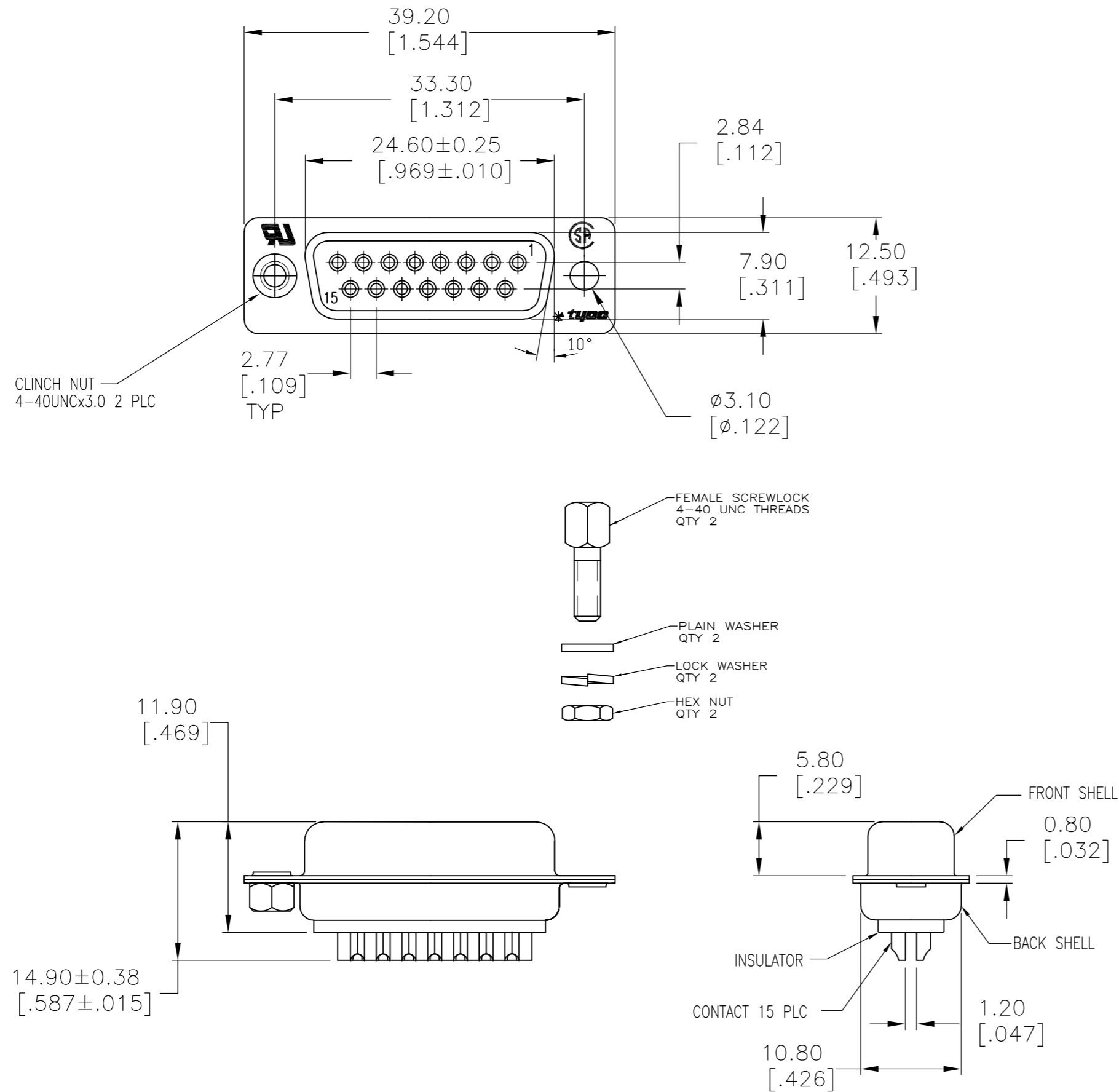
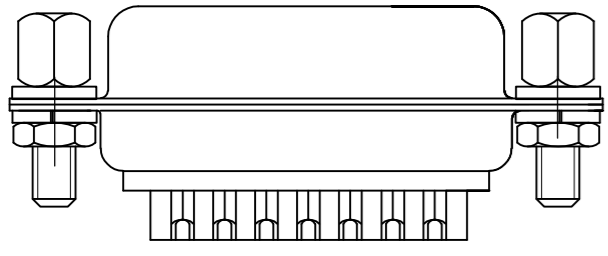


THIS DRAWING IS UNPUBLISHED. RELEASED FOR PUBLICATION  
 © COPYRIGHT - By - ALL RIGHTS RESERVED.

LOC		DIST		REVISIONS			
P	LTR	DESCRIPTION		DATE	DWN	APVD	
GP	00	H		REVISED PER ECO-12-010968	08OCT2012	CJV	CWR



- MATERIAL**
  - FRONT INSULATOR: PBT, 30%GF, UL94V-0, BLACK COLOR
  - BACK INSULATOR: PBT, 30%GF, UL94V-0, BLACK COLOR
  - CONTACT: BRASS
  - FRONT SHELL: STEEL
  - BACK SHELL: STEEL
  - HARDWARE: STEEL
- FINISH**
  - CONTACT: GOLD PLATING 0.02 $\mu$ m MIN ON CONTACT AREA, 0.0023 $\mu$ m [.000090] MIN TIN-LEAD PLATING ALL OVER 0.00127 [.000050] MIN NICKEL
  - HARDWARE: 5.08 $\mu$ m [.000200] MIN ZINC, YELLOW CHROMATE
  - SHELL: TIN FULL SHELL, 0.76 $\mu$ m MIN
- SPECIFICATION**
  - ELECTRICAL CHARACTERISTICS:
    - CURRENT RATING: 3 AMPERES
    - DIELECTRIC WITHSTANDING VOLTAGE: AC 1000V r.m.s
    - INSULATION RESISTANCE: 5000 MEGOHMS MINIMUM AT DC 500V
    - CONTACT RESISTANCE: 10 MILLIOHMS MAXIMUM.
  - RECEPTACLE ASSEMBLY MATES WITH ANY 15 POSITION PLUG IN AMPLIMITE SERIES
  - SOLDER CUP WILL ACCOMMODATE 20 MAX AWG WIRE.
  - CONTACT: GOLD PLATING 0.02 $\mu$ m MIN ON CONTACT AREA, 0.0023 $\mu$ m [.000090] MIN HOT DIPPED TIN-COPPER PLATING ALL OVER 0.00127 [.000050] MIN NICKEL
  - HARDWARE: 5.08 $\mu$ m [.000200] MIN ZINC, YELLOW CHROMATE
  - SHELL: BRIGHT TIN FULL SHELL, 0.76 $\mu$ m MIN
  - ROHS 2002/95/EC COMPLIANT
  - SUPERSEDED BY 5-787352-1



ASSEMBLED VIEW

OBSOLETE	6	7	5-787352-1
	2	8	787352-1
FINISH	PART NO		

THIS DRAWING IS A CONTROLLED DOCUMENT. DIMENSIONING AND TOLERANCING PER ASME Y14.5M-2009		DWN M.BINNER 03MAR03	<b>TE</b> TE Connectivity	
DIMENSIONS: mm [INCHES]		CHK R.BENDORF 05MAR03		
TOLERANCES UNLESS OTHERWISE SPECIFIED:		APVD R.BENDORF 05MAR03	NAME	
0 PLC ± -		PRODUCT SPEC	CONNECTOR KIT, UNASSEMBLED, SOLDER CUP, SIZE 2, 15 POSN, HD-20, AMPLIMITE RECEPTACLE	
1 PLC ± 0.25		APPLICATION SPEC	SIZE	CAGE CODE
2 PLC ± 0.13			A2	00779
3 PLC ± 0.05			SCALE	DRAWING NO
4 PLC ± -			2:1	C=787352
ANGLES ± 4°			SHEET	RESTRICTED TO
MATERIAL	FINISH	WEIGHT	1 of 1	-
		CUSTOMER DRAWING	REV	H