

TE Connectivity. All Rights Reserved.

CONVERSION TABLE

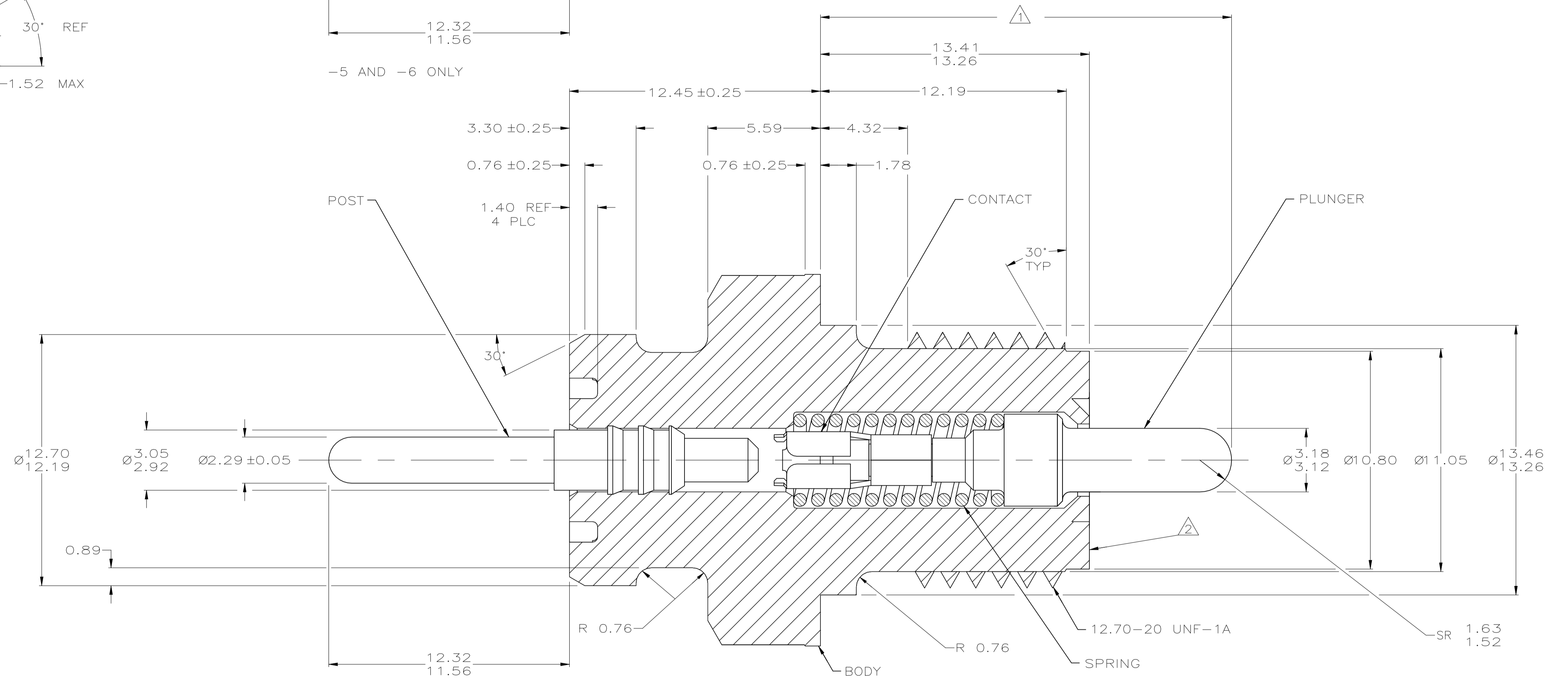
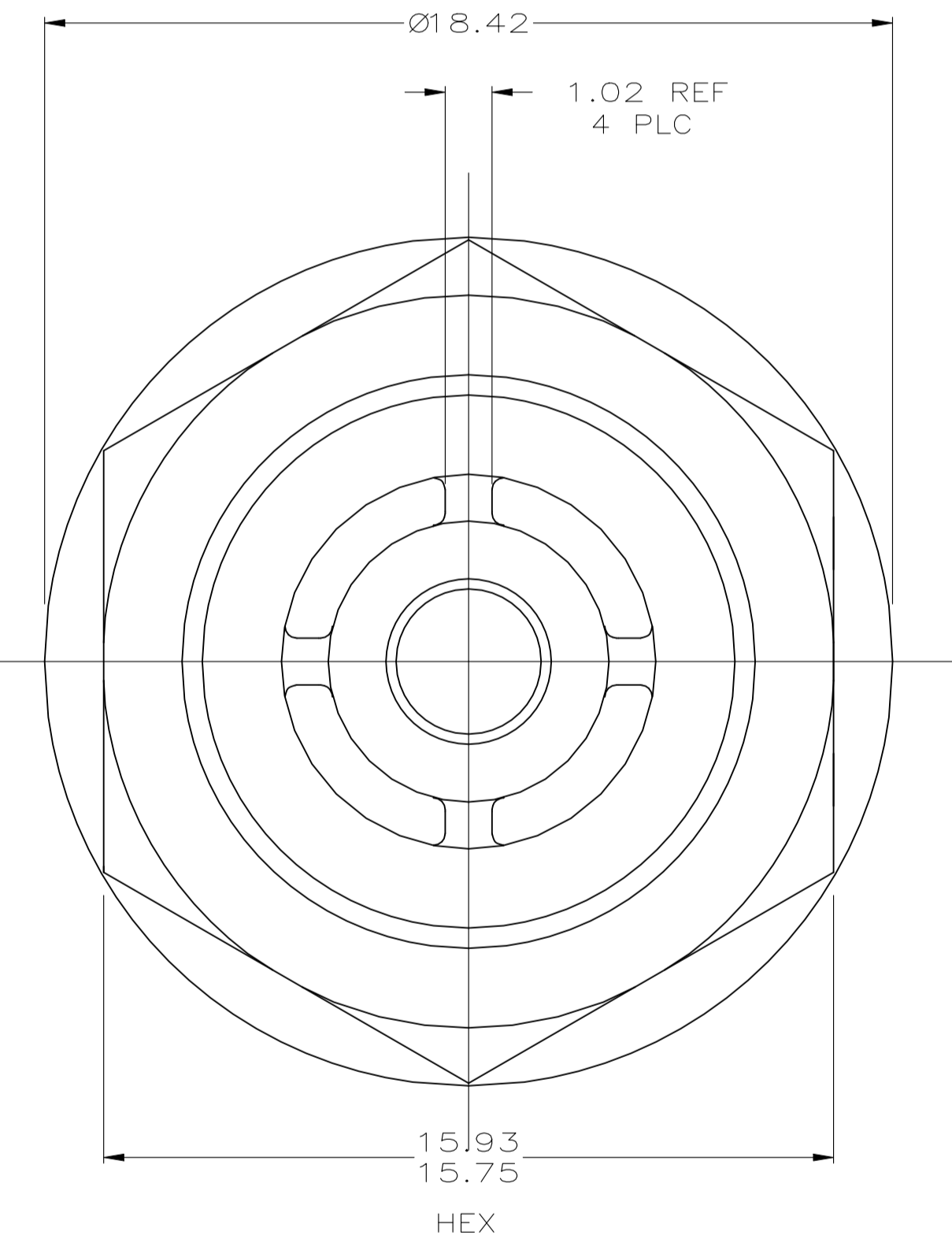
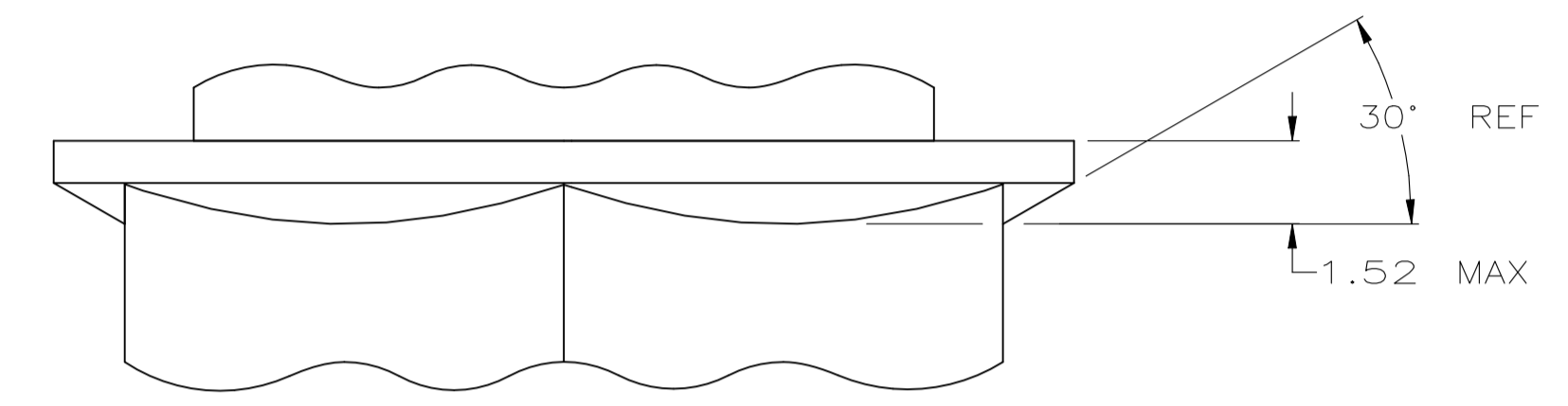
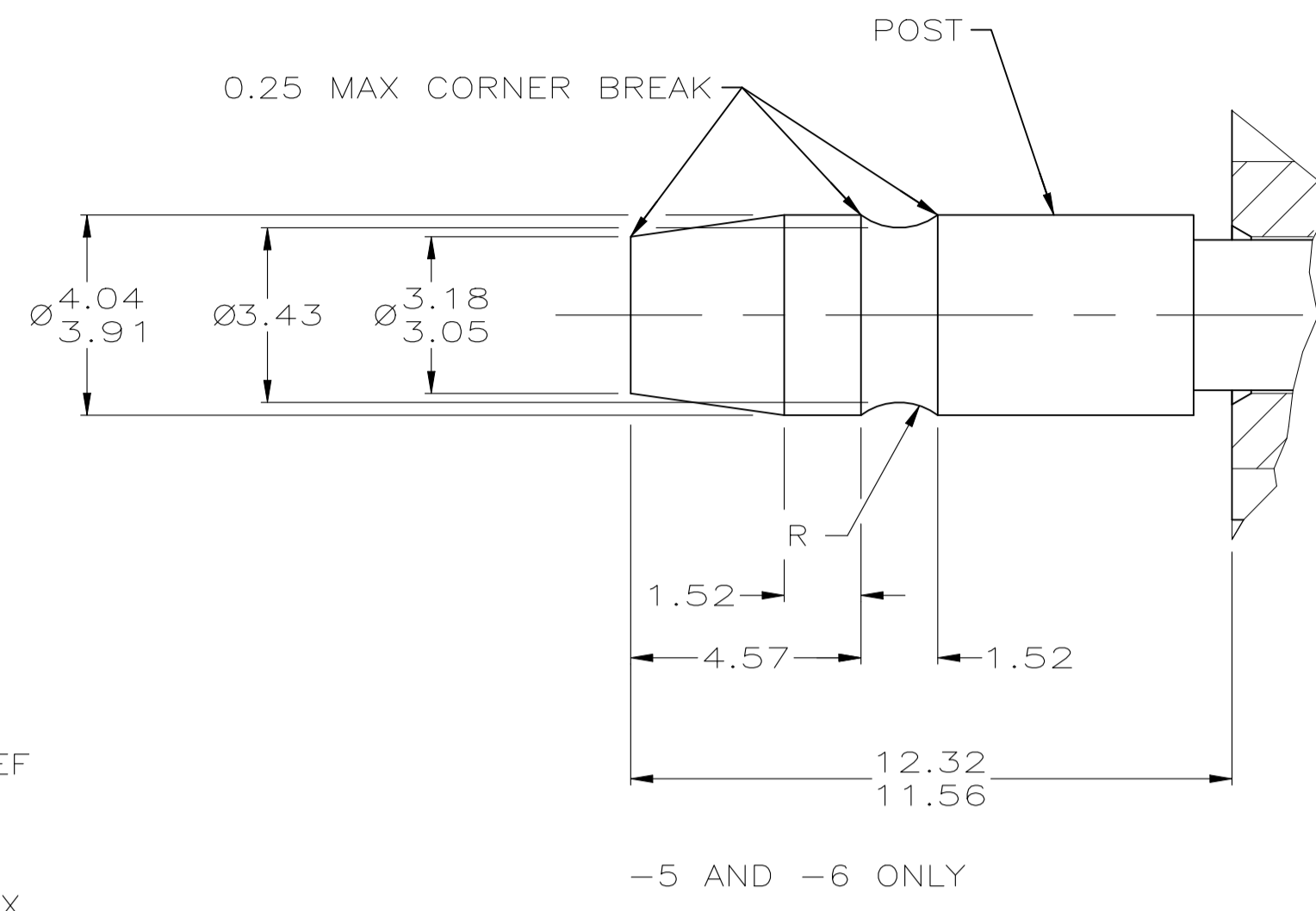
MM	IN	MM	IN	MM	IN	MM	IN
0.05	.002	2.92	.115	10.80	.425	15.93	.627
0.13	.005	3.05	.120	11.05	.435	17.78	.700
0.25	.010	3.12	.123	11.56	.455	18.03	.710
0.76	.030	3.18	.125	12.19	.480	18.42	.725
0.89	.035	3.30	.130	12.32	.485	18.54	.730
1.02	.040	3.43	.135	12.45	.490	18.80	.740
1.40	.055	3.91	.154	12.70	.500	19.41	.764
1.52	.060	4.04	.159	13.26	.522	19.86	.782
1.63	.064	4.32	.170	13.41	.528	20.07	.790
1.78	.070	4.57	.180	13.46	.530	-	-
2.29	.090	5.59	.220	15.75	.620	-	-

REVISIONS

P	LTR	DESCRIPTION	DATE	DRN	APVD
P2		REVISED PER ECO-20-014034	19JAN2021	AP	BK

⚠ PLUNGER POSITION HEIGHT:
 AT LATCH - 18.03-18.54
 MAXIMUM SOLID - 17.78
 MINIMUM FREE - 20.07
 INSTALLED - 19.86
 ELECTRICAL CONTACT - 18.80-19.41

⚠ STAMP 3-DIGIT DATE CODE ON THE PLUNGER END AS INDICATED. DATE CODE TO CONSIST OF (M IF ASSEMBLED IN MEXICO) LAST DIGIT OF THE YEAR, FOLLOWED BY TWO DIGITS REPRESENTING THE WEEK, FOLLOWED BY VENDOR CODE (IF REQUIRED), FOLLOWED BY THE DASH NUMBER. THE NUMBERS SHALL READ CLOCKWISE.



VENDOR CODE	SPRING LOAD AT INSTALLED HEIGHT	SPRING	CONTACT	POST	PLUNGER	BODY	PART NUMBER
K	11 TO 16 N [2.5 TO 3.5 LBS]	STAINLESS STEEL TYPE 302	BRASS, TIN PLATING	BRASS, NICKEL PLATING	BRASS, TIN PLATING	NYLON, NATURAL	776035-8
K	11 TO 16 N [2.5 TO 3.5 LBS]	STAINLESS STEEL TYPE 302	BRASS, TIN PLATING	BRASS, NICKEL PLATING	BRASS, TIN PLATING	NYLON, YELLOW	776035-7
-	13 TO 20 N [3.0 TO 4.5 LBS]	STAINLESS STEEL TYPE 302	BRASS, TIN PLATING	BRASS, NICKEL PLATING	BRASS, NICKEL PLATING	NYLON, NATURAL	776035-6
K	11 TO 16 N [2.5 TO 3.5 LBS]	STAINLESS STEEL TYPE 302	BE CU, TIN PLATED	BRASS, NICKEL PLATING	BRASS, NICKEL PLATING	NYLON, NATURAL	776035-5
K	11 TO 16 N [2.5 TO 3.5 LBS]	STAINLESS STEEL TYPE 302	BRASS, TIN PLATING	BRASS, NICKEL PLATING	BRASS, CADMIUM PLATING	NYLON, YELLOW	776035-4
K	11 TO 16 N [2.5 TO 3.5 LBS]	STAINLESS STEEL TYPE 302	BRASS, TIN PLATING	BRASS, NICKEL PLATING	BRASS, NICKEL PLATING	NYLON, BLACK	776035-3
-	13 TO 20 N [3.0 TO 4.5 LBS]	STAINLESS STEEL TYPE 302	BRASS, TIN PLATING	BRASS, NICKEL PLATING	BRASS, NICKEL PLATING	NYLON, BLACK	776035-2
-	11 TO 16 N [2.5 TO 3.5 LBS]	STAINLESS STEEL TYPE 302	BRASS, TIN PLATING	BRASS, NICKEL PLATING	BRASS, NICKEL PLATING	NYLON, BLACK	776035-1

THIS DRAWING IS A CONTROLLED DOCUMENT.

DIMENSIONS: mm [INCHES]

TOLERANCES UNLESS OTHERWISE SPECIFIED:

0 PLC	± -
1 PLC	± -
2 PLC	± 0.13
3 PLC	± -
4 PLC	± -
ANGLES	± -

MATERIAL: SEE TABLE

FINISH: SEE TABLE

WEIGHT: 0.000000

CUSTOMER DRAWING

DIN T. BECK 10-13-92

CHK R. SWING 10-13-92

APVD -

NAME -

PRODUCT SPEC -

APPLICATION SPEC -

SIZE: A1

CAGE CODE: 00779

DRAWING NO: 776035

RESTRICTED TO: -

SCALE: 8:1

SHEET: 1 of 1

REV: P2

STE TE Connectivity

ASSEMBLY, BRAKE SWITCH