

REVISIONS					
P	LTR	DESCRIPTION	DATE	DWN	APVD
C		REVISED PER ECN-24-262368	15JUL2024	AP	AL

1. CABLE LENGTH TOLERANCE ON 0-150 INCH LONG CABLES = +0.2% OF TOTAL CABLE LENGTH WITH A MINIMUM TOLERANCE OF +6.4 [.25] -0 [0]. CABLE LENGTH TOLERANCE ON CABLES OVER 150 INCHES = +1% -0% OF TOTAL CABLE LENGTH.

2. PLACE LABEL ON CONDUCTOR #2 WHERE SHOWN PER AMP 2480-0903.MP1. CUSTOMER PART NUMBER AND REVISION SHALL ALSO BE INCLUDED ON LABEL.

3. BECAUSE OF SHIPPING CONSTRAINTS, REFOLDING/SHAPING OF CABLE ASSEMBLIES MAY BE REQUIRED BY CUSTOMER BEFORE INSTALLATION.

4. SOLDER-DIPPED AREA.

5. INSULATION STRIPPED AND COPPER HOT SOLDER DIPPED. SOLDER AND FLUX SHALL BE AS SPECIFIED OR ENGINEERING APPROVED RoHS COMPLIANT EQUIVALENT.

6. INSULATION TRANSITION ZONE.

7. SOLDER-DIPPED TAB MUST BE MADE ROUND TO FIT INTO BUTT SPLICE PRIOR TO CRIMP, USE TOOL #34-559467-000.

8. DETAIL SHOWS HOW RECEPTACLE CABLE ENDS ARE TERMINATED.

POSITION NUMBER	POWER CONTACT 765209-2 (SHORT)		GROUND CONTACT 765209-1 (LONG)	
	A	B	A	B
1	NONE	9	NONE	NONE
2	NONE	NONE	9	NONE
3	NONE	9	NONE	NONE
4	9	NONE	NONE	NONE


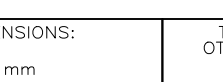
9. MOUNTING HARDWARE AMP/PN 208211-4, QTY 2, AND P/N 21068-5, QTY 2, FOR DRAWER CONNECTOR IS INCLUDED. BULK PACK MOUNTING HARDWARE IN SEALED BAG. THIS BAG IS TO CONTAIN ENOUGH HARDWARE FOR THE NUMBER OF CABLES IN A GIVEN BOX. PLACE THIS BAG IN THE BOX OF CABLES.

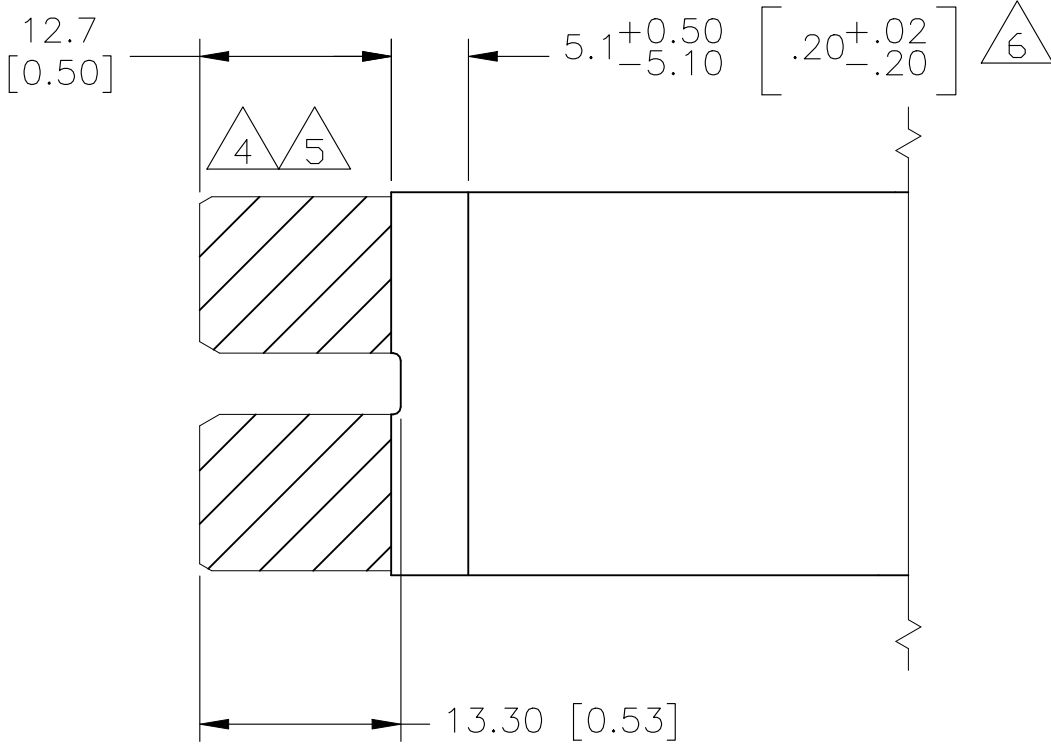
POS. NO.	CABEL LABEL
1	B
2	-
3	A
4	C

LABEL TEXT ON FAR SIDE

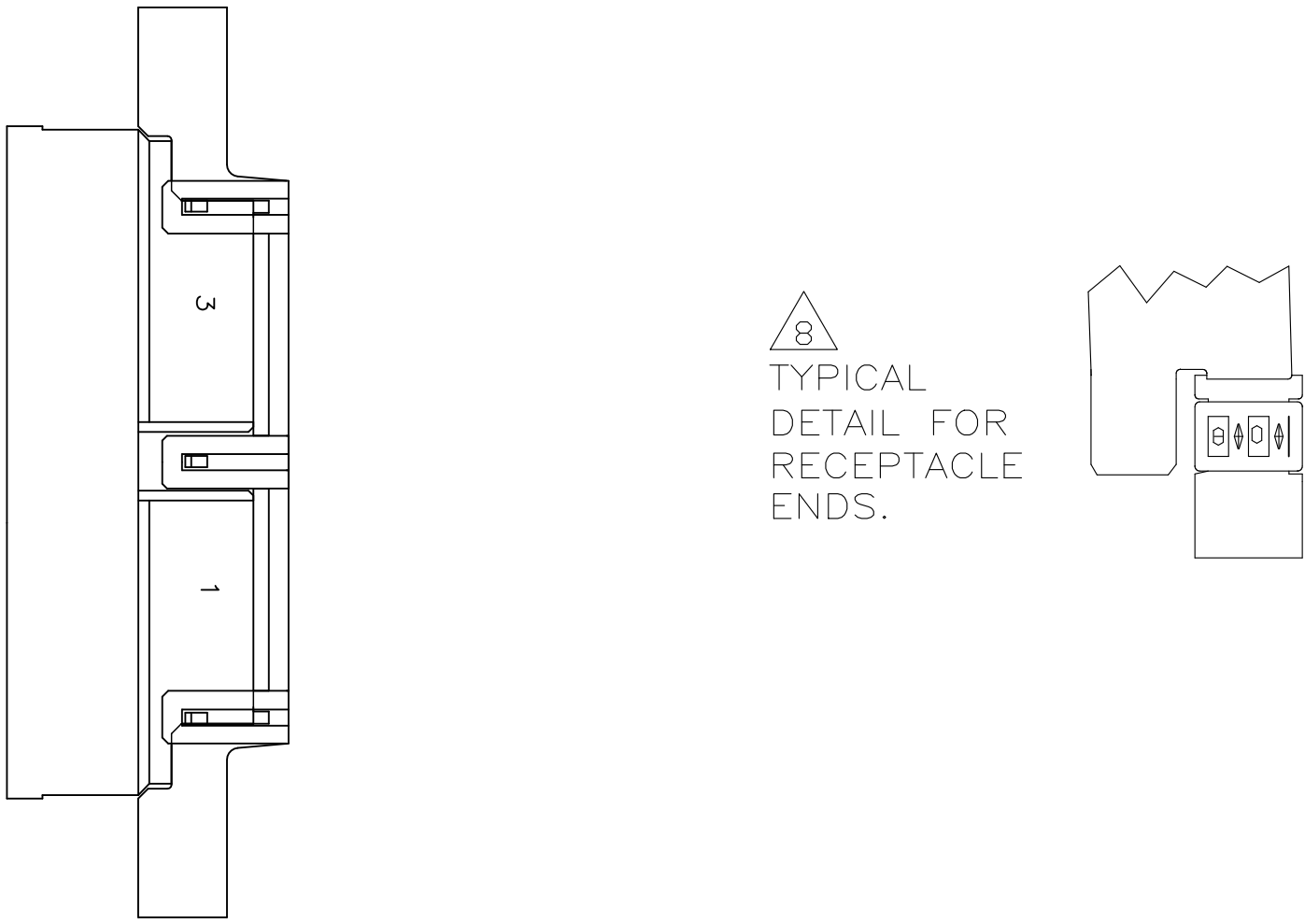
11. PRODUCT AND PROCESSING MUST MEET REQUIREMENTS OF TYCO ELECTRONICS STANDARD 230-702.

OBSOLETE	AD	548150	1600	[63.00]	1-766692-0
	AD	548149	1702	[67.00]	766692-9
	AD	548148	1778	[70.00]	766692-8
OBSOLETE	AD	548147	1880	[74.00]	766692-7
OBSOLETE	AD	548146	2007	[79.00]	766692-6
OBSOLETE	AD	548145	2311	[91.00]	766692-5
	AD	548144	2388	[94.00]	766692-4
OBSOLETE	AD	548143	2464	[97.00]	766692-3
OBSOLETE	AD	548142	2591	[102.00]	766692-2
	AD	548141	2718	[107.00]	766692-1
CUSTOMER REVISION		CUSTOMER PART NUMBER	DIM A mm [INCHES]		PART NUMBER

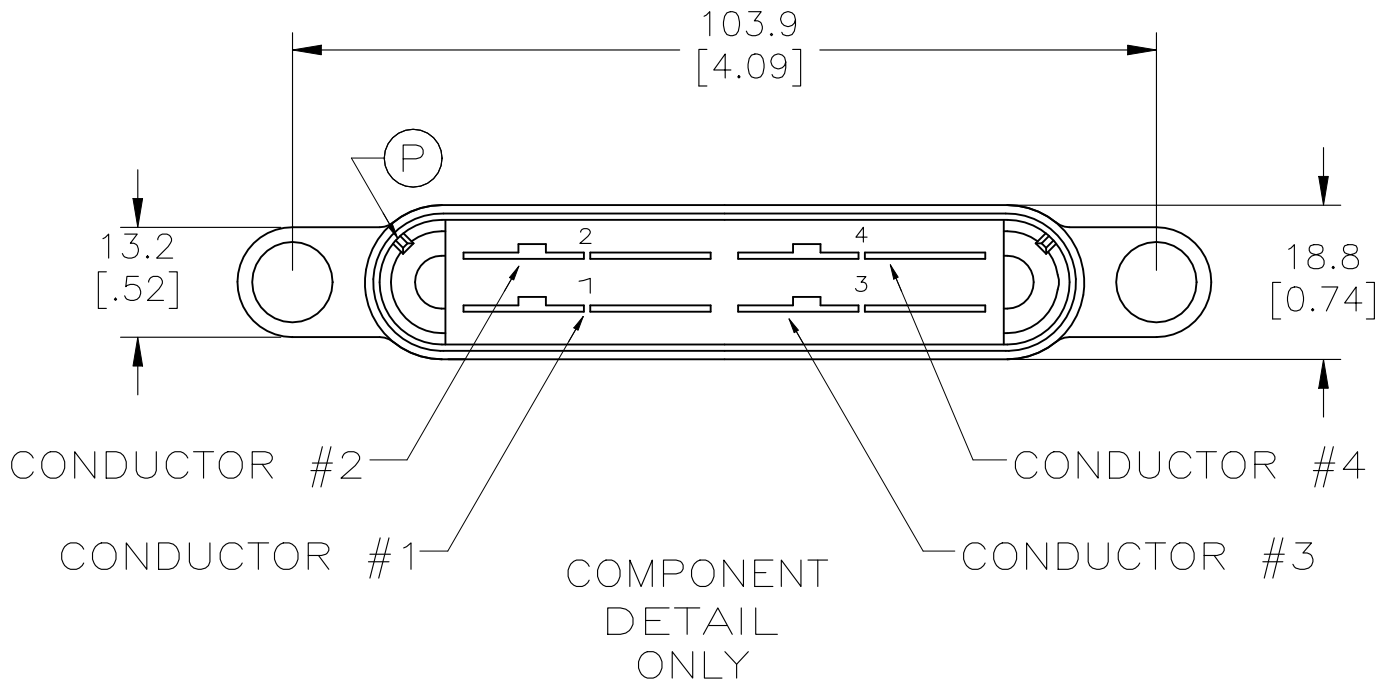
THIS DRAWING IS A CONTROLLED DOCUMENT. DIMENSIONING AND TOLERANCING PER ASME Y14.5M-2009		DWN R.GRZYBOWSKI CHK DANIEL YI APVD DANIEL YI	06MAY2011 6MAY2011	 TE Connectivity	
DIMENSIONS: mm	TOLERANCES UNLESS OTHERWISE SPECIFIED:	NAME	WAVE CRIMP, CONNECTOR AC BAY		
		PRODUCT SPEC			
		APPLICATION SPEC			
MATERIAL -	FINISH -	SIZE	CAGE CODE	DRAWING NO	RESTRICTED TO
		WEIGHT 0.000000	A1	00779	766692
		CUSTOMER DRAWING		SCALE N.T.S.	SHEET 1 OF 1
				REV C	



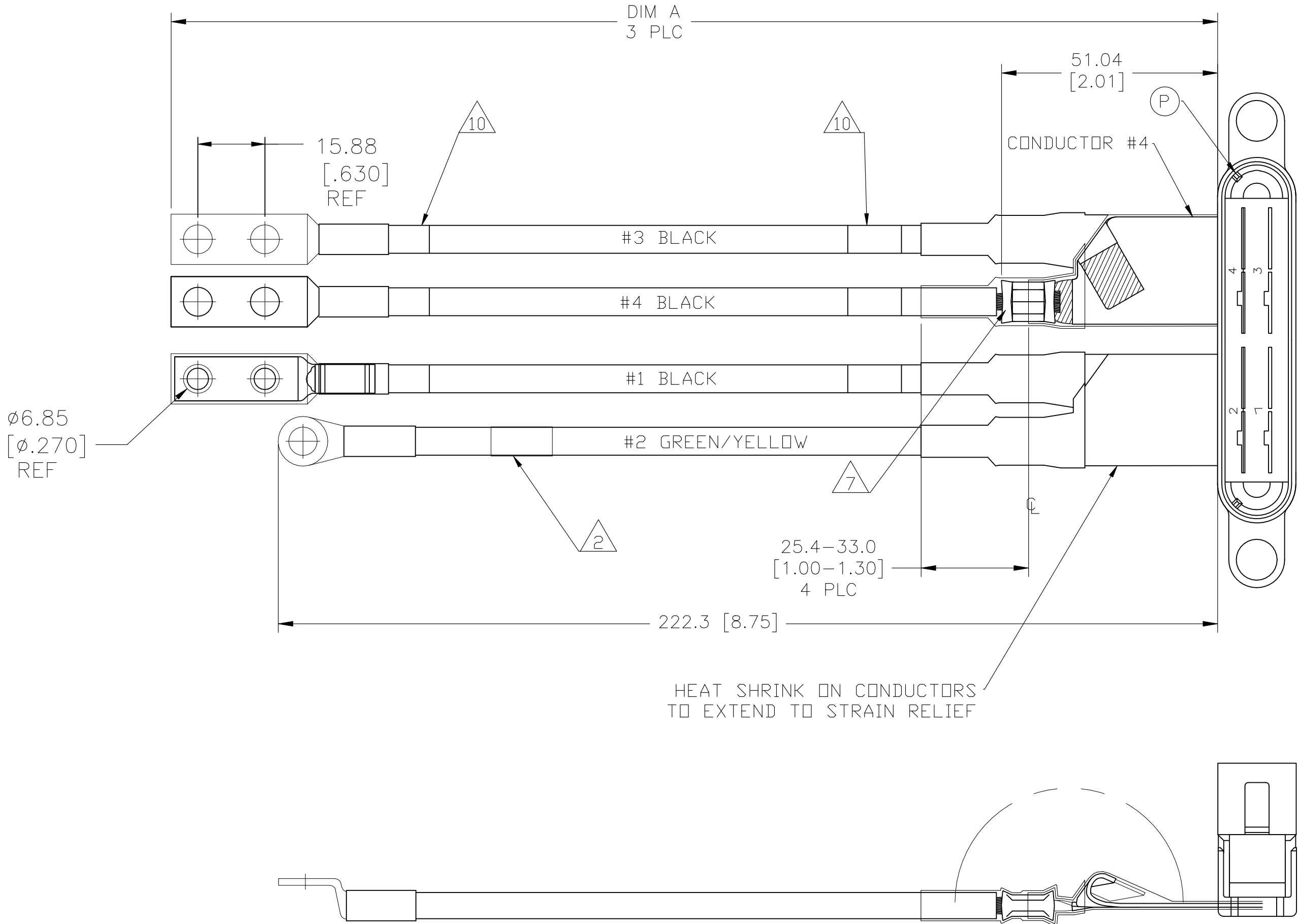
CONDUCTORS PRIOR TO CRIMP



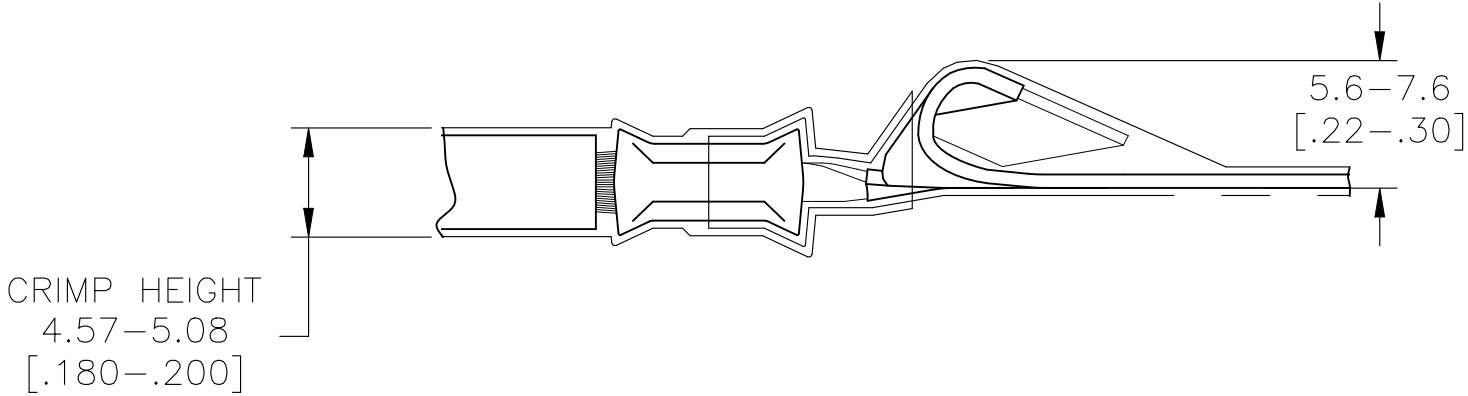
TYPICAL  
DETAIL FOR  
RECEPTACLE  
ENDS.



COMPONENT  
DETAIL  
ONLY



SEE DETAIL Z



DETAIL Z