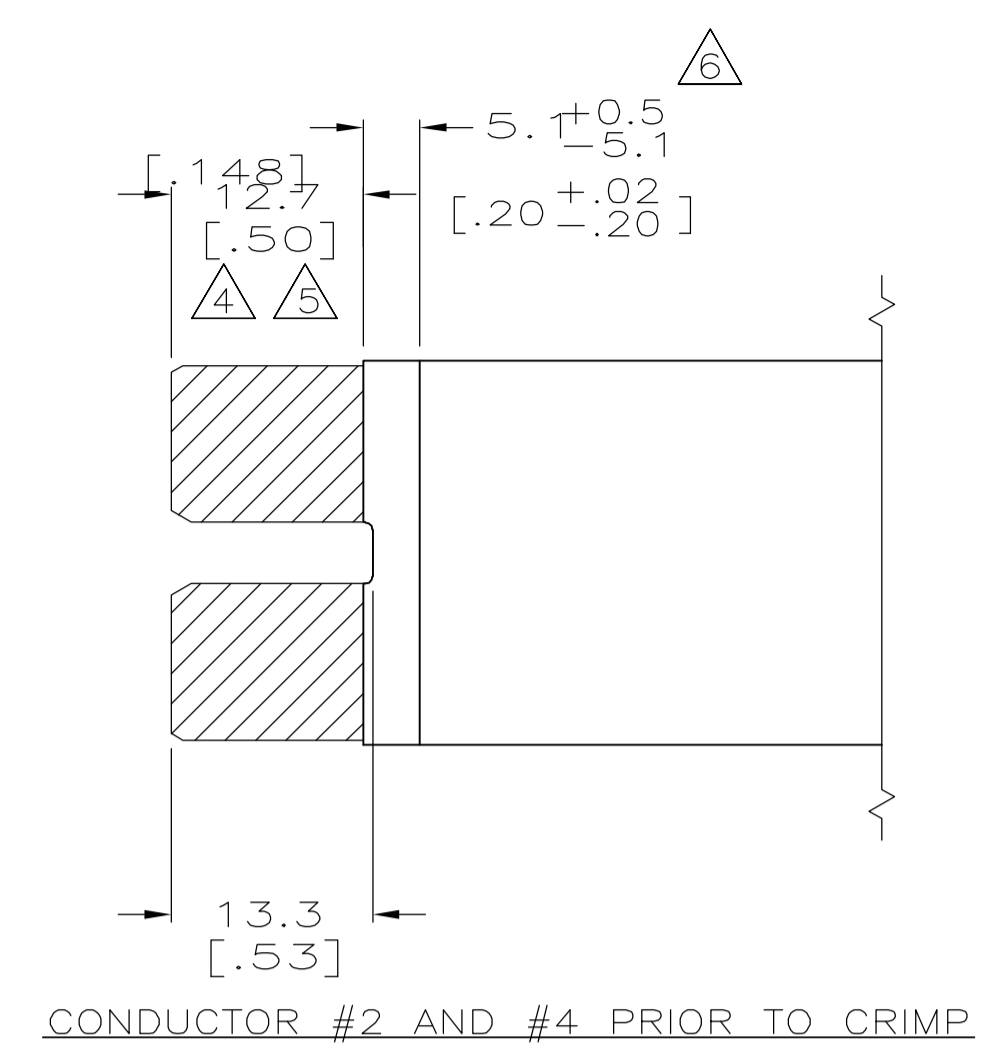
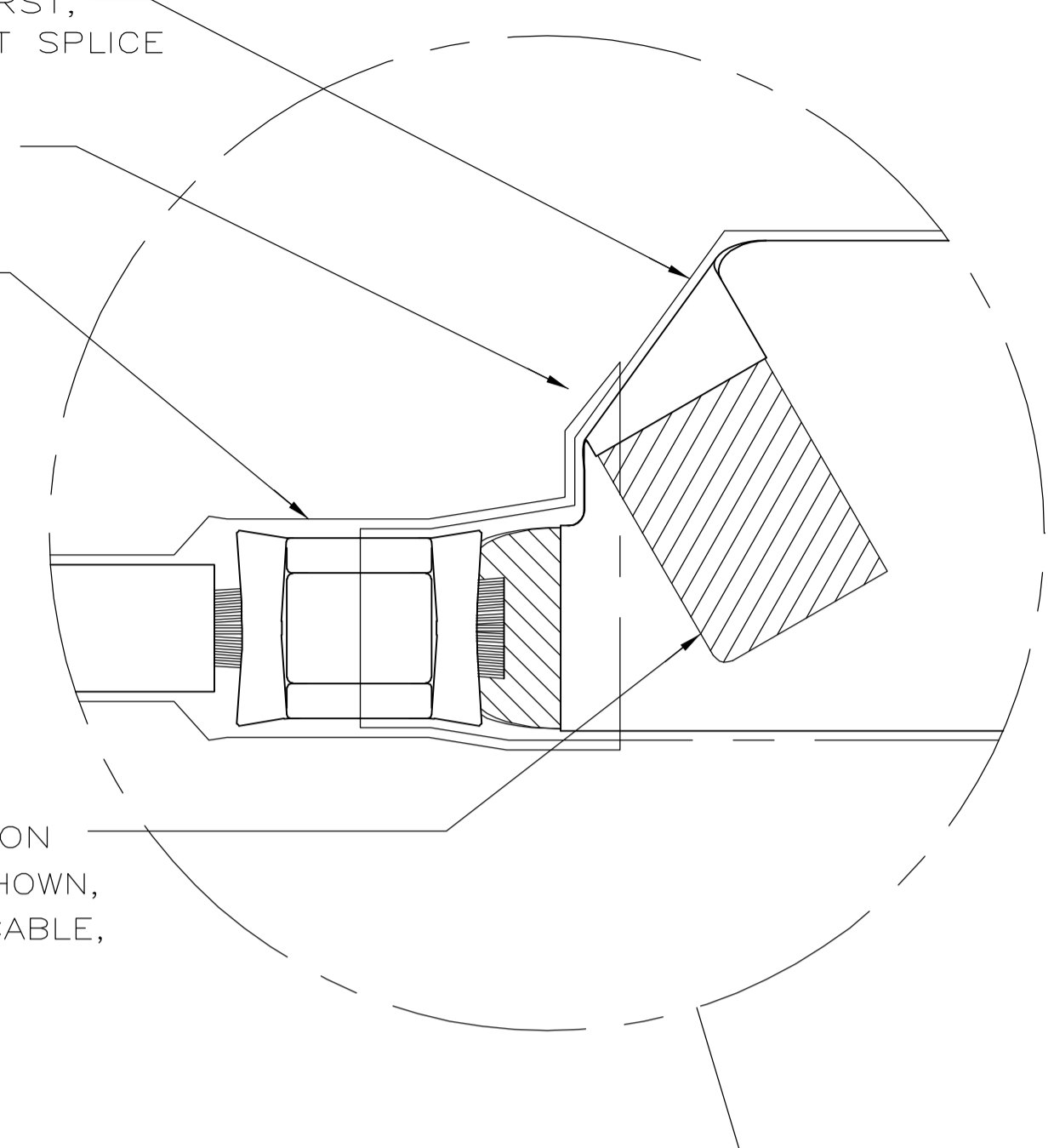


1" SHRINK SLEEVE INSTALLED FIRST, POSITIONED TO APPROX CENTER OF BUTT SPLICE AND SHRUNK TO SECURE

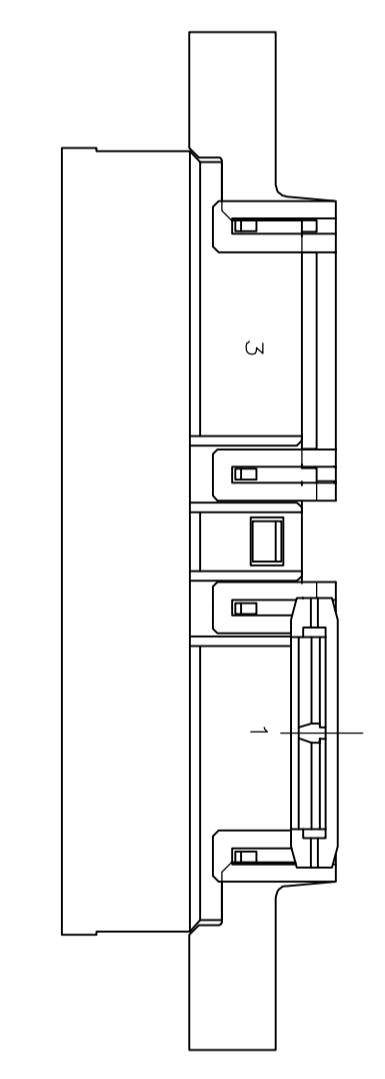
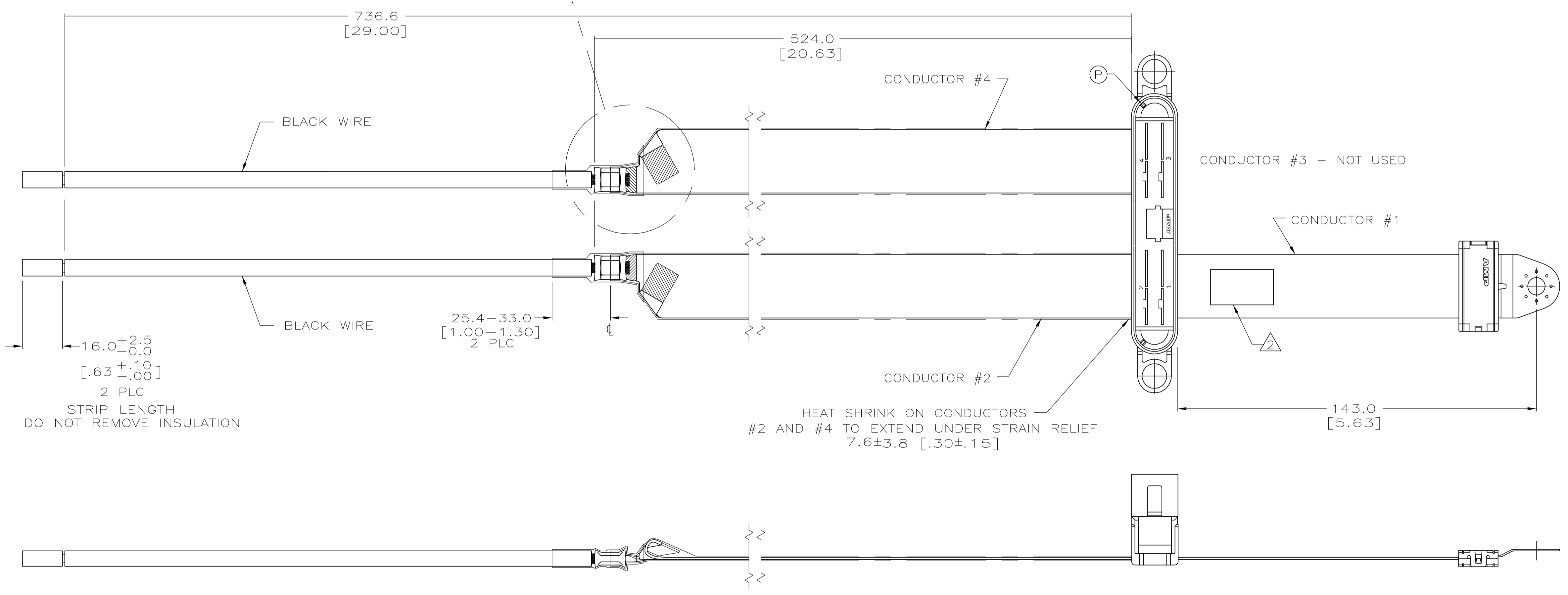
FOLD OVER 1" SLEEVING AS REQUIRED TO ALLOW 1/2" SLEEVE OVERLAP

1/2" SHRINK SLEEVE THEN SLID ONTO ASSEMBLY AS FAR AS POSSIBLE OVER PREVIOUSLY INSTALLED SLEEVING, AND SHRUNK TO SECURE

PRIOR TO SHRINK SLEEVE INSTALLATION FOLD UNUSED NOTCH-TAB APPROX AS SHOWN, TIP NOT TO EXTEND PAST BOTTOM OF CABLE, DO NOT PRESS FLAT

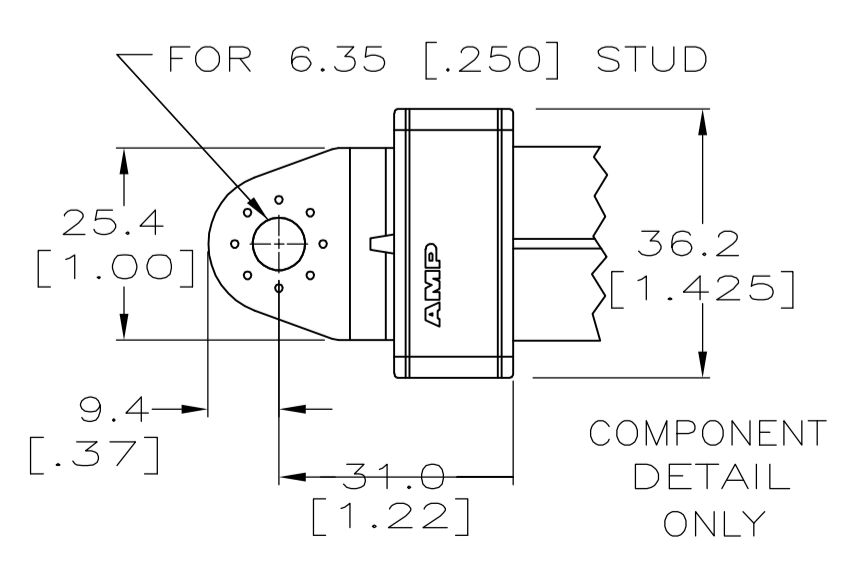
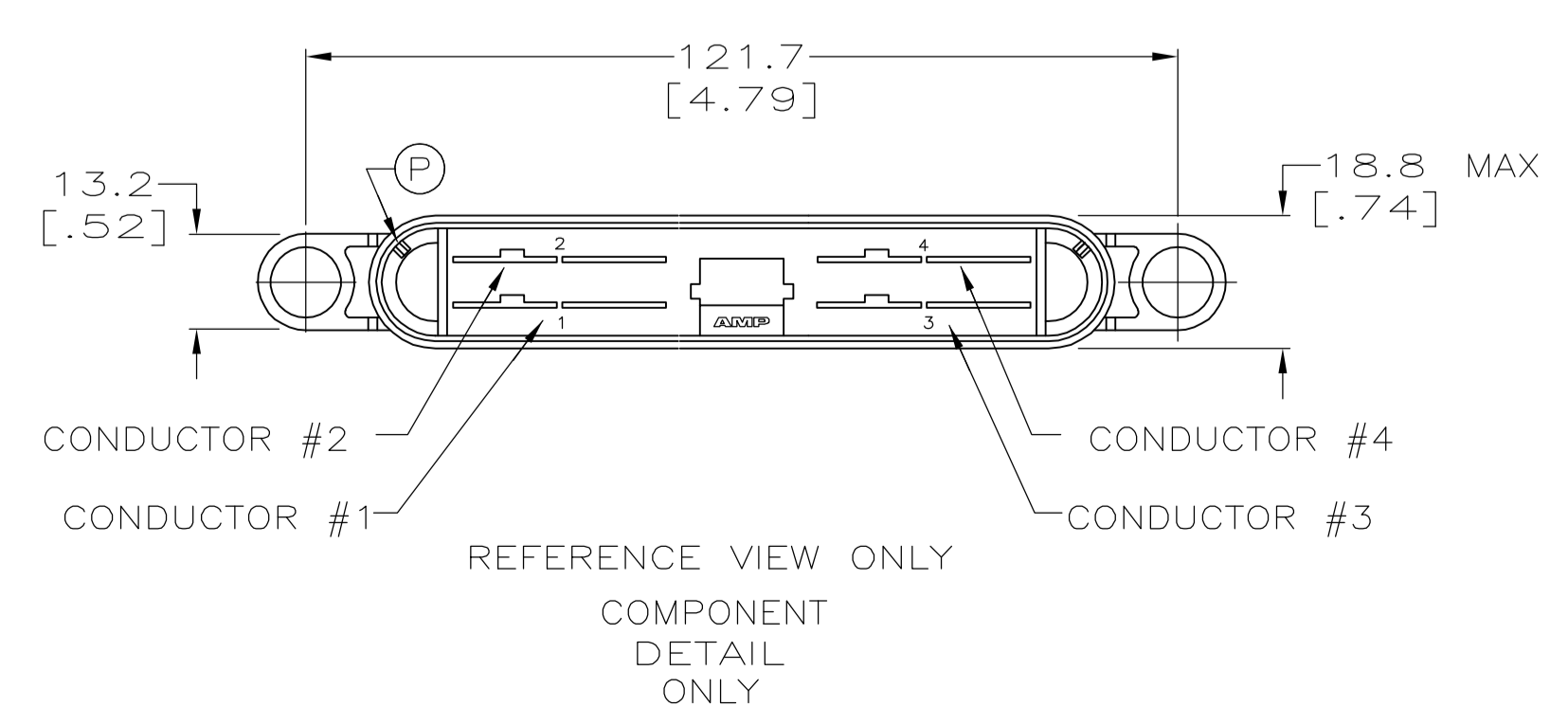


- CABLE LENGTH TOLERANCE ON 0-150 INCH LONG CABLES = +0.2% -0% OF TOTAL CABLE LENGTH WITH A MINIMUM TOLERANCE OF +6.4 [.25] -0 [0]. CABLE LENGTH TOLERANCE ON CABLES OVER 150 INCHES LONG = + 1% -0% OF TOTAL CABLE LENGTH.
- LABEL APPROX. WHERE SHOWN. HARRIS PART #250-0550-015 INCLUDED ON LABEL INFORMATION.
- BECAUSE OF SHIPPING CONSTRAINTS, REFOLDING/SHAPING OF CABLE ASSEMBLIES MAY BE REQUIRED BY CUSTOMER BEFORE INSTALLATION.
- SOLDER-DIPPED AREA.
- COATING: DIPPED.
- INSULATION TRANSITION ZONE.
- PRODUCT AND PROCESSING MUST MEET REQUIREMENTS OF TYCO ELECTRONICS STANDARD 230-702.



16.0 +/- 2.5 [-0.0] [.63 +/- 0.10] 2 PLC  
 STRIP LENGTH DO NOT REMOVE INSULATION

25.4-33.0 [1.00-1.30] 2 PLC



POSITION NUMBER	POWER CONTACT	GROUND CONTACT
	765209-2 (SHORT)	765209-1 (LONG)
1	-	X
2	X	-
3	-	-
4	X	-

THIS DRAWING IS A CONTROLLED DOCUMENT.		DIN 9 FRAY 07APR06	Tyco Electronics Corporation Harrisburg, PA 17105-3608	
DIMENSIONS: mm		CHK J. SCHOLZ 07APR06	APVD J. SCHOLZ 07APR06	
TOLERANCES UNLESS OTHERWISE SPECIFIED:		NAME AMPPOWER Wave Crimp System CABLE ASSY		
0 PLC ± -	1 PLC ± 0.5 [0.02]	APPLICATION SPEC	SIZE A1	CAGE CODE 00779
2 PLC ± 0.25 [0.010]	3 PLC ± -	114-49005	DRAWING NO	766389
4 PLC ± -	ANGLES ± -	WEIGHT	RESTRICTED TO	
MATERIAL		CUSTOMER DRAWING		SCALE FULL SHEET 1 OF 1 REV D