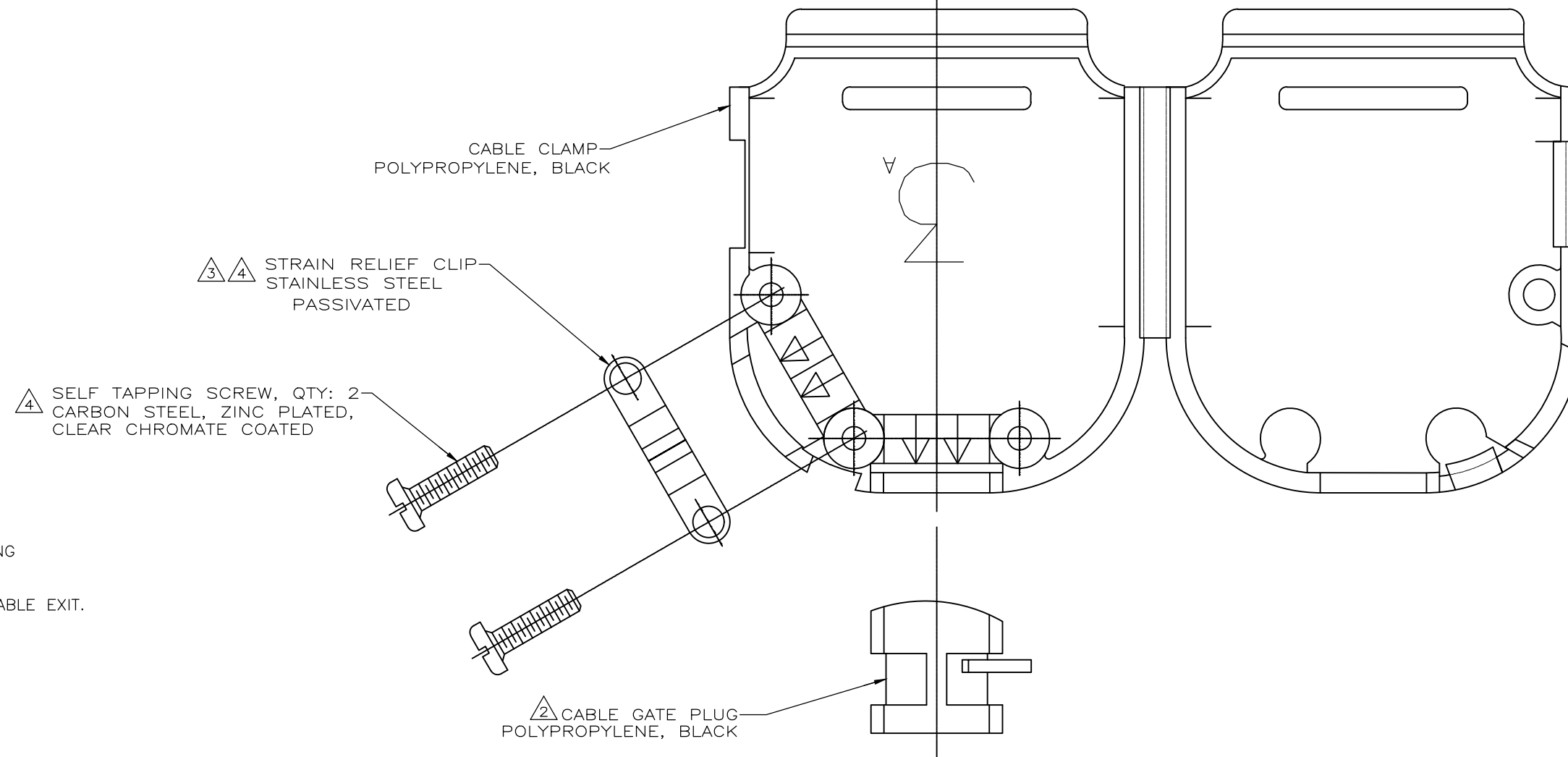
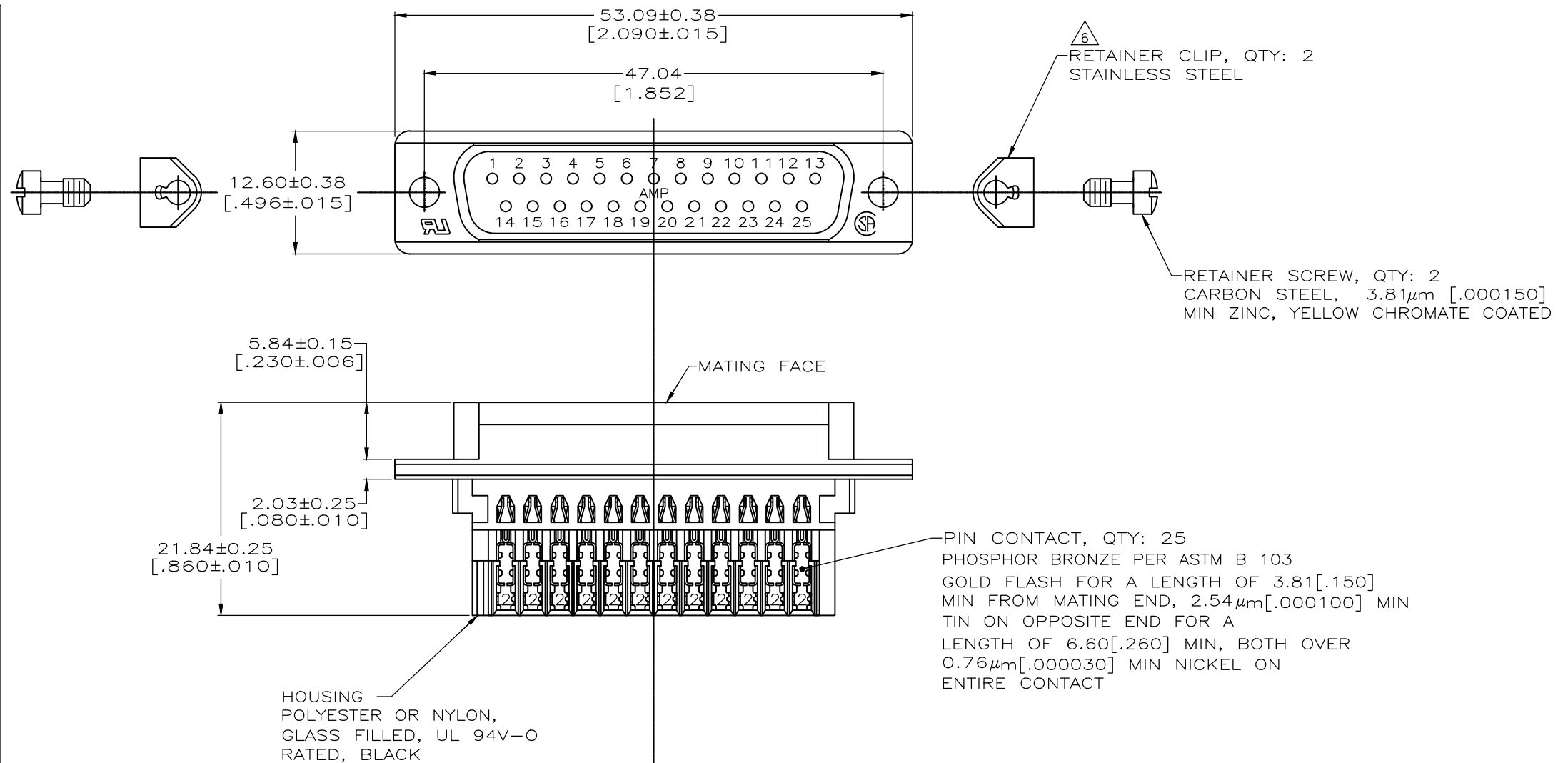
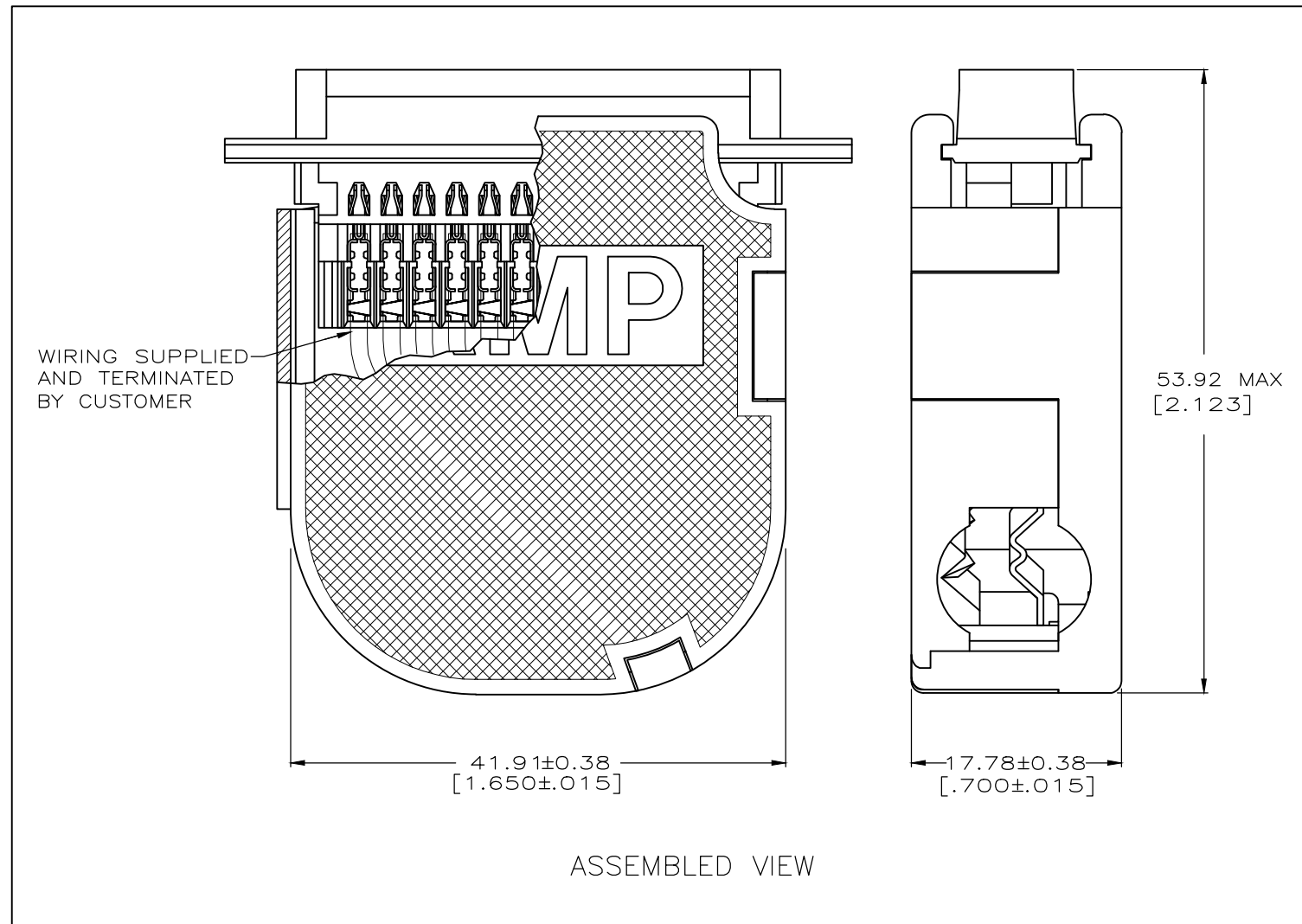


LOC		DIST		REVISIONS			
P	LTR	DESCRIPTION	DATE	DWN	APVD		
GP	00	B	REVISED PER ECO-18-013110	21AUG2018	AP	DG	



- CONTACTS ACCEPT 22-26 AWG RANGE.
- CABLE GATE PLUG TO BE PLACED IN CABLE EXIT NOT BEING USED.
- STRAIN RELIEF CLIP CAN BE REVERSED FOR PROPER INSTALLATION, DEPENDING ON SIZE OF CABLE DIAMETER.
- STRAIN RELIEF CLIP AND SELF TAPPING SCREWS MAY BE USED AT EITHER CABLE EXIT.
- CABLE DIAMETER RANGE = 4.58-11.68 [.180-.460].
- STARTING POINT OF THREAD SHOWN FOR ILLUSTRATION ONLY. ACTUAL STARTING POINT CAN BE ANY ORIENTATION.

749809-9
PART NUMBER

THIS DRAWING IS A CONTROLLED DOCUMENT.		DWN 12-22-04 L. VARELA - DOCK5	TE Connectivity		
DIMENSIONS: mm [INCHES]		CHK 12-22-04 J. GERACE			
TOLERANCES UNLESS OTHERWISE SPECIFIED:		APVD 12-22-04 M. WALMSLEY	NAME PLUG KIT, UNASSEMBLED, SIZE 3, 25 POSITION, AMPLIMITE HDE-20		
0 PLC ± - 1 PLC ± - 2 PLC ± 0.13 [.005] 3 PLC ± - 4 PLC ± - ANGLES ± -		PRODUCT SPEC 108-40011	SIZE A2	CAGE CODE 00779	DRAWING NO 749809-9
MATERIAL SEE CALLOUTS		FINISH SEE CALLOUTS	WEIGHT -	RESTRICTED TO -	SCALE 3:1
CUSTOMER DRAWING			SHEET 1 OF 1	REV B	