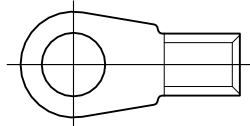


MATED WITH:
—
PROJECT NO: E97-52519

REVISIONS				
P	LTR	DESCRIPTION	DATE	APVD
	B3	ECN-22-146156	29MAR2022	RK CSD

TERMINAL LUG ACCORDING TO VG 96933-13:
KABELSCHUH ENTSPRECHEND VG 96933-13:



DRAWING NOT AT SCALE
DARSTELLUNG NICHT MAßSTÄBLICH

TERMINAL LUG VG 96933 T 13 A ____ A
KABELSCHUH

<u>DASH-NO.</u> <u>PER VG</u> <u>TEILE-NR.</u> <u>NACH VG</u>	<u>AMP PART NO.</u> <u>AMP BESTELL-NR.</u>	<u>PACKING UNIT</u> <u>VERPACKUNGS-</u> <u>EINHEIT</u>	
039	726 346-0	200	
040	726 346-1	200	
041	726 346-2	200	
042	726 346-3	150	OBSOLETE
043	726 346-4	125	OBSOLETE

TE Connectivity. All Rights Reserved.

PACKING:

BULK PACKAGING IN FOLDING BOX
PACKING UNIT: SEE TABLE

VERPACKUNG:

SCHÜTTGUT IN FALTSCHACHTEL
VERPACKUNGSEINHEIT: SIEHE TABELLE



DIMENSIONS: mm	DWN S.STOLZ	06-OCT-97	MATERIAL	-	FINISH	-
	CHK W.BOCK	06-OCT-97	TE Connectivity			
TOLERANCES UNLESS OTHERWISE SPECIFIED:	APVD G.FELDMEIER	06-OCT-97				
	0 PLC ± - 1 PLC ± - 2 PLC ± - n. ISO 8015 3 PLC ± - n. ISO 2768 - mH - E 4 PLC ± - n. DIN 16901 - 140 ANGLES ± -	PRODUCT SPEC VG 96933	NAME TERMINAL LUG, AWG 2 KABELSCHUH, AWG 2			
	APPLICATION SPEC VG 96933	SIZE A4	CAGE CODE 00779	DRAWING NO G-726346	RESTRICTED TO -	
	WEIGHT -	CUSTOMER DRAWING				
		SCALE	-	SHEET	1 OF 1	REV B3