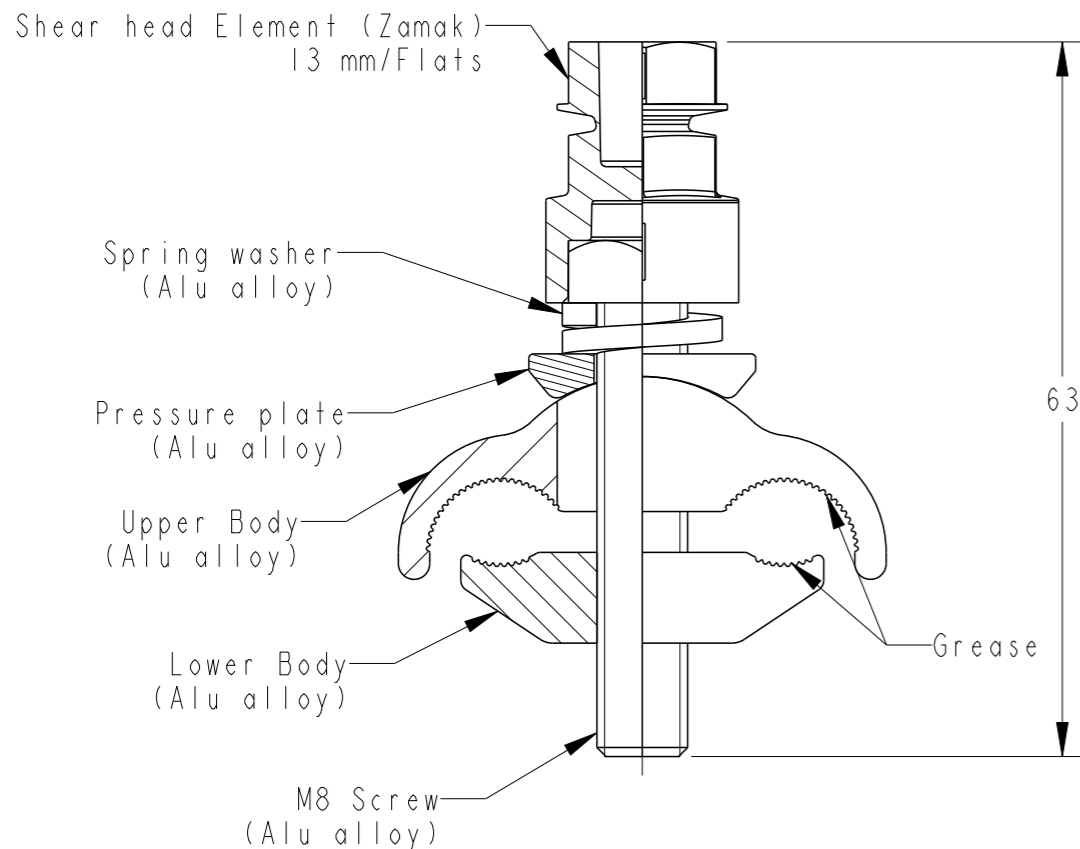


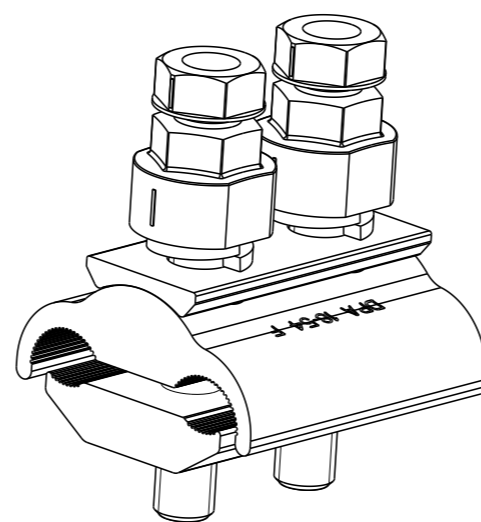
© 2021 TE Connectivity. All Rights Reserved.

REVISIONS

P	LTR	DESCRIPTION	DATE	DWN	APVD
A		INITIAL RELEASE	06MAY2021	SM	NA

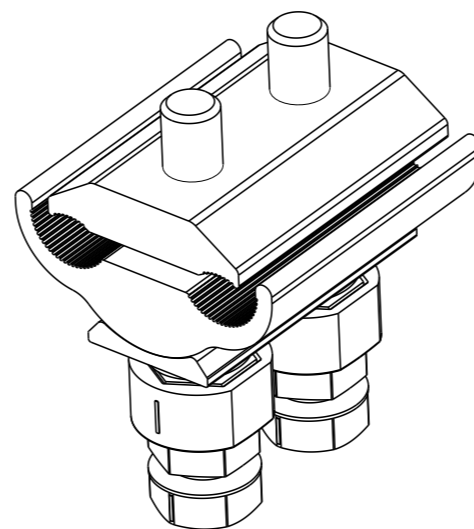


ECHELLE 1:1

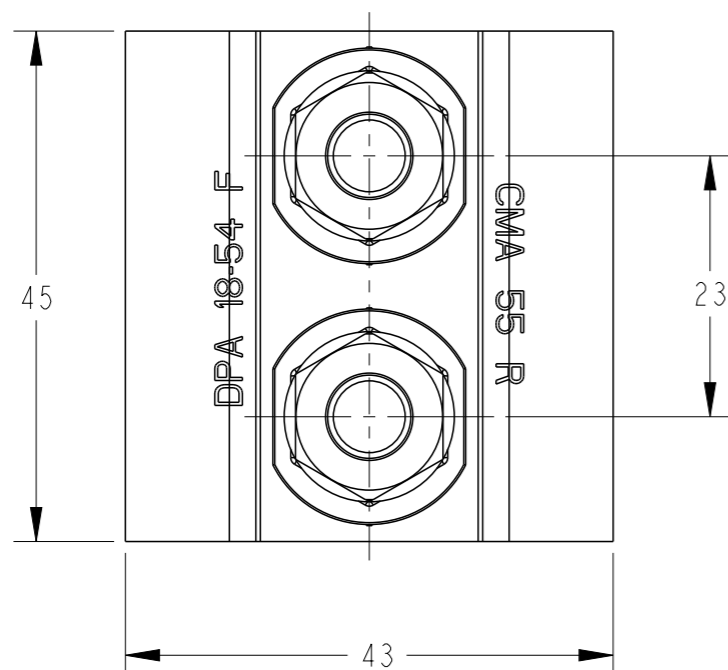


Notes:

- Nominal breaking torque: 12 N.m
- Capacities: 17.8 to 54.6 mm² Main and Tap
- Marking : Batch number (year and week of manufacturing)



ECHELLE 1:1



DPA 18-54 F	709158-1
DESCRIPTION	TCPN

THIS DRAWING IS A CONTROLLED DOCUMENT.		DWN SATYA.M 06MAY2021	TE Connectivity						
DIMENSIONS: mm		CHK L. JONATHAN 06MAY2021			NAME DPA 18-54 F / CMA 55 R				
TOLERANCES UNLESS OTHERWISE SPECIFIED:		APVD N. ALMEDIA 06MAY2021							
		PRODUCT SPEC -	APPLICATION SPEC -	RESTRICTED TO -					
MATERIAL -		FINISH -	WEIGHT 92 g	SIZE A3	CAGE CODE 00779	DRAWING NO. C=709158	SCALE 3:2	SHEET 1 OF 1	REV A
CUSTOMER DRAWING									