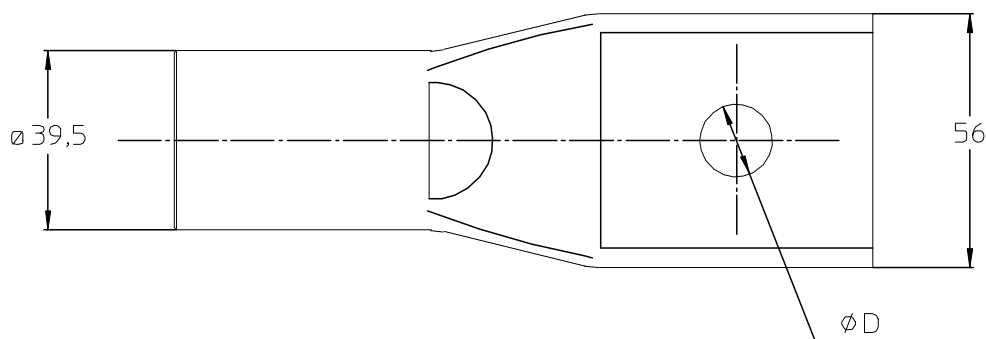
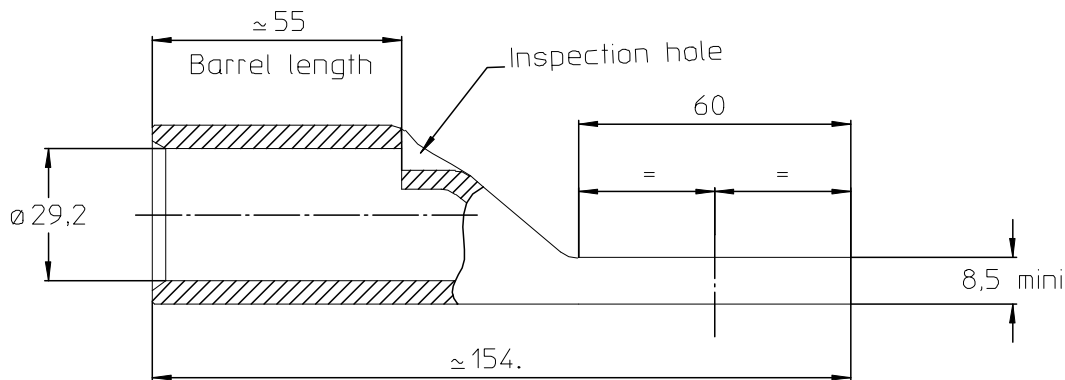


LOC FH	DIST 2	REVISIONS				
P	LTR REV	DESCRIPTION MODIFICATIONS	DATE	DWN DESS.	APVD APP.	
	0	ANNULE ET REMPLACE 09VAD0130	10-Oct-97	GC	JT	



PN	REFERENCE	DIMENSIONS (mm)
		∅D
708370-8	XDT 500/60x56-D14	14
708370-7	XDT 500/60x56-D17	17
708370-6	XDT 500/60x56-4D11x32	11
708370-5	XDT 500/60x56-4D11x30	11
708370-4	XDT 500/60x56-D16	16
708370-3	XDT 500/60x56-4D9x30	9
708370-2	XDT 500/60x56-D26	26
708370-1	XDT 500/60x56-NP	-

MARKING: REFERENCE, DIE, DATE

CAPACITY: 500mm² Cu

MADE IN FRANCE

MATERIAL: TINNED COATED COPPER

DIE: E500Cu

RELEASED FOR PUBLICATION

THIS DRAWING IS UNPUBLISHED.
DIFFUSION RESENTE AMP

BY AMP INCORPORATED. ALL RIGHTS RESERVED.
TOUS DROITS RESERVES.

© COPYRIGHT 19

DIMENSIONS: mm	DWN /DESSINE CARLHIAN	10-Oct-97	MATERIAL MATIERE	-	FINISH FINITION	-	
TOLERANCES UNLESS OTHERWISE SPECIFIED PER TOLERANCES NON SPECIFIEES SELON :	CHK /VERIFIE COSTE	-	 21220 Gevrey Chambertin FRANCE				
	APVD /APPROUVE THIARD	-					
	PRODUCT SPEC SPEC. PRODUIT	-	NAME TITRE	XDT 500/60x56			
	APPLICATION SPEC SPEC. APPLICATION	-	SIZE FORMAT	CAGE CODE	DRAWING NO	No PLAN	
WEIGHT MASSE APPROX.	-	A4	00779	© = 708370			
CUSTOMER DWG / PLAN CLIENT		UNIQUEMENT POUR REFERENCE	SCALE EHELLE	1:1	SHEET FEUILLE	1 OF 1 DE 1	REV 0